

IDJWI ISLAND EDUCATION FUND

www.idjwiislandeducationfund.org



Annual Report

FY: 2012

CONTENTS

The Year in Review	1
Financial Summary	3
Contact Information	4

THE YEAR IN REVIEW

THE YEAR IN REVIEW

SUMMARY OF THIS YEAR'S PROGRESS

The Idjwi Island Education Fund had an extraordinary year in 2012. During 2012, we made major progress towards our funding goal for construction of the school by raising nearly \$9,000 from more than seventy-five individual, corporate, and foundation donations. We were among a select group of projects selected to participate in the launch of Give for Youth, a Microsoft YouthSpark program, in partnership with Global Giving, to help young people connect with greater opportunities for education, employment and entrepreneurship. We also supported the existing school by providing new chalk boards, school supplies, and tuition assistance for nine needy sixth graders. We look forward to even greater success in 2013.

ON-GOING SUPPORT FOR THE EXISTING SCHOOL

We continued to provide much-needed support for the existing elementary school in Buhumba during 2012. In November, we provided backpacks, notebooks, and other supplies to all of the students at the Buhumba Village School, along with new high-quality chalk boards for the sixth grade class room. These supplies were locally sourced in Goma and transported

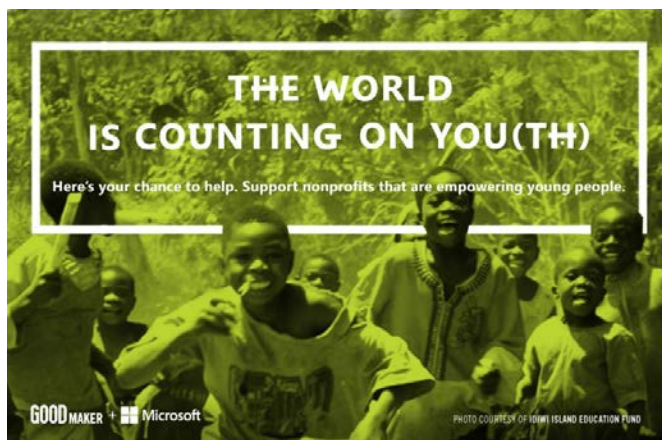


to the island by boat. The students, teachers, school director, and local officials were all present for the delivery of these supplies by our volunteers. We also provided tuition assistance to six girls and three boys in sixth grade. The entire community expressed their gratitude to the Fund and the generous donors who made this support possible

Current school students unloading their new school supplies.

MICROSOFT'S 'GIVE FOR YOUTH' CAMPAIGN

The Idjwi Island Education Fund is proud to have been selected as a charter project for Give for Youth, a micro-giving portal launched in September 2012 to help generate funding for youth causes around the world. Give for Youth is a Microsoft YouthSpark program, in



partnership with Global Giving. Our participation in Give for Youth has allowed us to qualify for matching funds, expand our donor base, and provide additional support for the students at the school. During 2012, we received more than \$1,500 in matching funds.

Microsoft Citizenship featured this photograph taken by our founder, Them Nyamunongo, of kids on Idjwi Island when launching its Give for Youth Challenge.

THE YEAR IN REVIEW

HOLIDAY GIFT WRAPPING AT CHILD'S PLAY

Barston's Child's Play, a popular neighborhood toy store in Washington, D.C., provides free holiday gift wrapping and each year they donate all the proceeds to charity. This year our friends and neighbors there selected the Fund as the non-profit to benefit from these considerable donations. Child's Play provided the wrappers and the paper and we shared in the fun by volunteering to wrap! The effort provided information about the Fund at the gift-wrapping table, and all donations received from customers were given to the Fund. Barston's Child's Play also made a generous donation to the Fund. In addition to raising more than \$2,000 for the children on Idjwi Island, the gift-wrapping campaign provided valuable exposure for the Fund and our work on Idjwi Island. We are looking forward to more fun next year!

DESIGNING THE NEW SCHOOL

We have intensified our design planning for the new school. We have received sketch plans from a local architect in Goma and we are processing these plans together with plans, materials lists, and project costs from other regional school projects, to build a working budget for construction. With this information in hand, we are ready to solicit bids for the construction of the new school. Recent instability in Goma and North Kivu has resulted in significant fluctuation in the cost of materials. Local contacts and builders are monitoring the developments and will advise us when prices have stabilized enough to commence. We will be ready when they do.



We are looking forward to another great year with a lot of exciting progress coming up. We hope you'll continue to travel with us on our journey.

David Folds

Board President

FINANCIAL SUMMARY

FINANCIAL SUMMARY

Idjwi Island Education Fund (Jan. 1 – Dec. 31, 2012)

Beginning Balance:	\$22,388.00
Donations Received:	\$8,976.00
Total Expenditures:	(\$2,497.00)
Ending Balance:	\$28,867.00

FINANCIAL ACTIVITY

DESCRIPTION	REVENUE	EXPENSES
Donations Received	\$8,976.00	
Taxes, Administrative		\$413.00
Operations (School supplies, chalk boards, tuition assistance)		\$1,410.00
Fundraising (Web site, poster, cards)		\$674.00
TOTAL	\$8,976.00	\$2,497.00

DONOR BREAKDOWN

• Individual Donations	\$3,701.00
• Matching Funds (Global Giving/Give for Youth)	\$1,853.00
• Corporate and Foundation Gifts	\$3,422.00

The Fund is very grateful to our corporate and foundation donors. During 2012, we received valuable donations through Microsoft's Give for Youth Campaign, Barston's Child's Play, and the McKenna Long & Aldridge Foundation.

CONTACT INFORMATION

CONTACT INFORMATION

We value all of your contributions and have benefitted often from new contacts and suggestions from each of you. The Fund is always looking for ways to expand our potential success. If you have comments or suggestions, please don't hesitate to contact us at one of the following addresses.

DAVID FOLDS
PRESIDENT

DAVIDFOLDS@GMAIL.COM

THEM NYAMUNONGO
VICE PRESIDENT

THEMNYAMUNONGO@GMAIL.COM

BETH HESLER
DEVELOPMENT

BETHESLER@GMAIL.COM

COMPANY INFORMATION

Idjwi Island Education Fund

Washington DC

www.idjwiislandeducationfund.org



IDJWI ISLAND EDUCATION FUND

www.idjwiislandeducationfund.org