

HAITI

DOMES

PROJECT

TRANSITIONAL HOUSING AND BEYOND



Coordinated by: **CAN-DO.ORG**

Unlike any other modern structure, Haiti Domes provide an affordable, all-encompassing shelter solution for the developing world and those in need of aid.



STRONG AND SAFE

- Durable fiberglass construction
- Resistant to fire, water, heavy winds
- Heat reflective, cool interiors
- Expandable design, many configurations

RAPID BUILD AND SETUP

- Speedy local production
- Assembly within an hour
- Transports easily
- Reusable, renewable materials

----- LIMITLESS POTENTIAL -----

Family housing
(short or long term)

Shelter from
seasonal storms for
large numbers of people

Orphanage housing
and dormitories

Community structures such
as administrative offices,
health clinics and more

Schools and
classroom space

Infill housing to relieve
strain on communities
hosting refugees

THE NEED FOR A SOLUTION

3

The Haiti Domes Project was initiated by CAN-DO to meet a variety of needs: shelter, transitional housing, community development, job creation, and economic development including export creation. Our mission is to improve quality of life and provide a housing solution that is affordable enough to qualify as transitional, yet durable and comfortable enough to serve for the long-term.



SOCIO-ECONOMIC CRISIS

- 600,000+ Haitian people are currently waiting for shelter and homes.
- Current shelters, such as tent cities or corrugated tin roof structures, are unsafe and overcrowded.
- The pre-earthquake number of orphans, 380,000, is estimated to have doubled from the quake.
- Shelter, clean water, and access to sanitation facilities are some of the basic physiological needs which are currently lacking.
- The economic environment needs jobs and growing businesses.
- Proper schools and health clinics are in short supply, limited in part by lack of facilities in which to operate.

GUIDING PRINCIPLES

The Haiti Domes Project aims at creating complete healthy living communities for the displaced people of Haiti, using cutting edge technologies to rapidly produce homes, schools and shelters in a community friendly manner. In addition, the Haiti Domes Project helps create local jobs by locating the manufacturing facility in Haiti.

- Flexible and turnkey design.
- Manufacture locally.
- Create local jobs.
- Utilize renewable energy.
- Encourage community input and address community needs at all times.
- Support our workers with housing assistance and profit sharing.



THE DOME STRUCTURE

4

Thanks to its unique and revolutionary utilization of traditional design, a Haiti Dome will be standing and in use long after tents have rotted and wooden shelters have been knocked down.

STRENGTH, DURABILITY AND LONGEVITY

- Constructed from fiberglass and resin, with a life expectancy of more than 25 years.
- Flexible and turnkey design: Multiple, expandable configurations are available to suit specific needs.
- Reusable and easily transported.
- Dome shape allows for optimum strength in stress situations, and makes wind damage unlikely (130 mph wind rated).
- Resistant to rotting, warping, mildew, water penetration, fire, hail, rodents, termites and pests.
- When secured to a concrete foundation, highly resistant to heavy rains, earthquakes and mudslides.
- Rapid build and setup: One factory shift can produce 2-3 domes per day, as needed, and a standard structure can be assembled or disassembled within an hour.
- Heat reflective: Interiors stay cooler than tents metal-roof structures due to venting and heat reflection.



COMPLEMENTARY TECHNOLOGY AVAILABLE

- Water purification and sanitation.
- Renewable energy sources including security and in-house lighting.
- Information support and cell phone access.

POTENTIAL USES

5

Domes can be expanded and enhanced easily - and offer multiple configurations to fulfill various needs. Structures can stand alone or be linked together for greater diversity.



FAMILY HOUSING

- Affordable, reliable shelter for short or long term.
- Basic dome (18'x18'x9') can house 1 family of 6 persons.
- Simplex Dome (18'x25'x9') can house 1 larger family or two families - up to 10 persons total.
- Different door and partition components available.
- Can serve as infill housing to relieve strain on communities hosting refugees.

COMMUNITY STRUCTURES

- Standard dome is augmented with additional panels, resulting size: up to 46 x 25'.
- Dividing, interior walls available.
- Use as office, community center, store, church, etc.
- Can provide hurricane shelter for 250+ persons.



MEDICAL CLINICS

- Sanitary environment for health-related purposes.
- Multiple doors allow segmentation of examination rooms, offices, and operating rooms, protecting privacy and decreasing risk of disease transfer.

SCHOOLS / CLASSROOM SPACE • ORPHANAGE HOUSING

- Disrupted school classes can be resumed quickly due to the fast assembly time of domes.
- Domes can be customized and sized for each orphanage or school.
- Haiti Domes are ideal for orphan dormitories, and can help traumatized children feel more secure knowing that their sleeping quarters are safe.
- If and when new earthquake proof structures are built for childrens' needs, the domes can be re-purposed and/or moved.

COMMUNITY REVITALIZATION

5

On the anniversary of the January 12th earthquake, the Community Revitalization Centers program was launched to establish locations and provides safe structures for education and health services, and invites participation to expand the number of services in each location. Speed is assured through partnership with Composites Karayib, a local plant to build rapid-assembly structures for use as medical clinics, schools, dormitories, housing, and public buildings.

COLLABORATIVE EFFORT

- The mayors of Haiti, who provide land in their respective cities.
- The Haitian National Government
- Local communities, which set priorities for health and education services.
- Local and international NGOs, which provide services at the centers.
- International donors, providing both in-kind supplies and financial resources



“The Community Revitalization Centers create a win-win situation for all parties concerned. Finally, local governments, the private sector, NGOs, and donors are coming together with a viable, scalable project. We locals will determine the highest priorities. The beauty of this true collaboration is that no one NGO dictates the approach or outcome, but many participate in creating a better, more effective, and sustainable solution.”

---- Joseph G. “Billy” Louis
Executive Director, GALATA

THE CRC MODEL

STARTER

- 1 to 3 structure on 1/4 acre land
- Staffed by a funded administrator
- Services from invited NGOs, medical schools, hospitals
- Adopted by churches, national groups, schools
- Budget: \$30K to set up; \$10K/ year to maintain staff

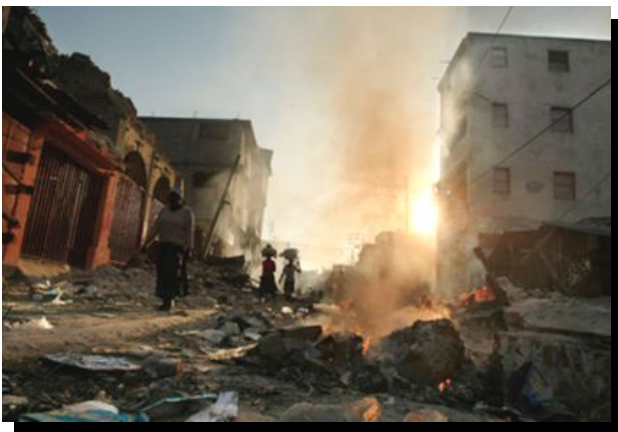
EXPANDED

- 4 – 12 additional structures on 2-10 acres
- Staff funding adds nurses aides, teachers aides
- Enhanced service from NGOs, medical schools, hospitals
- Expansion of number of adopting entities
- Budget: up to an additional \$100K to add structures, infrastructure, and local staff. Up to \$20K/year additional per year to maintain extra staff.

Support the Haiti Domes Project and start making an immediate difference in the lives of Haitian families, children and communities. Non-governmental organizations may be eligible for discounted pricing. To purchase domes through our direct sales division, or to become a wholesaler, please visit www.compositeskarayib.com

FUND A MODEL COMMUNITY

- A model community can be in place within two weeks notice of acceptance and site approval.
- Includes minimum of 10 family units (Basic or Simplex) to house 20+ families and 1 community structure (Duplex or larger).
- Different door and partition components for custom configurations.
- Complementary technology available: water purification, sanitation, renewable energy.
- Donations can also be made toward the construction of a model community.
- For more information about model dome communities, contact Carolyn Neff: carolyn@can-do.org / 1-877 CAN-DO97 (226-3697) *US only*.



FUND A COMMUNITY STRUCTURE

- A community structure can be built within a few hours, pending materials availability.
- Standard dome is augmented with additional panels, resulting size: 39 feet x 25 feet by 9 feet (or larger).
- Interior dividing walls can create separate areas for multiple uses.
- For use as dormitory, school, office, health clinic, or mix thereof.
- Added benefit of providing hurricane shelter for 250+ persons during a storm.

MAKE A DONATION

Monetary donations to the Haiti Domes Project are welcome and will be fully directed toward improving the living standards, safety and health of the displaced people and children of Haiti.

- Donations from credit cards or PayPal can be made via CAN-DO's secure website: <https://secure.CAN-DO.org>
- Information about sending a check or money order is found on the same site page.
- Please annotate your donation with "Haiti Domes Project", and if desired, specify whether you wish to direct your funds toward a school building, orphanage housing, or general housing.
- CAN-DO is a registered 501(c)(3) non-profit organization and your donation is tax deductible.

Coordinated by CAN-DO (Compassion Into Action Network - Direct Outcome), the Haiti Domes Project is a collaborative effort between manufacturers, foundations and service providers who share a common vision: to bring safety, security and peace-of-mind to thousands of Haitian people in desperate need of aid.

CAN-DO (COMPASSION INTO ACTION NETWORK – DIRECT OUTCOME)

- 501(c)(3) non-profit organization dedicated to providing lasting solutions to some of the world's most critical problems, from natural disasters to environmental degradation, humanitarian crises to educational inequity.
- Eric Klein, founder, has been on-the-ground in Haiti since January 2010, working with locals, government and other NGOs to expedite relief and delivery of supplies.

COMPOSITES KARAYIB

- Haitian company producing fiberglass domes, community structures, safe sanitation and clean water services for the local and international market.
- Located in Port-Au-Prince, Composites Karayib also provides employment opportunities and export opportunities for the people of Haiti.

BOEHM-GLADEN FOUNDATION

- Committed to sharing knowledge, replicating best practices, creating jobs, and improving disposable income for rural families.
- Current projects include Knowledge Center for Social Solutions; Village Energy Uganda; Choices Prosperity Solutions India.

NOTEWORTHY PARTNERS

- Lumisolair: innovators in renewable energy.
- World Toilet Organization: innovators in improving toilet and sanitation conditions.

----- CONTACT INFORMATION -----

www.haitidomesproject.com
haitidomesproject@gmail.com
1-877-226-3697 (US only)

CONFIGURATIONS / PRICING

Opt for an existing dome size or create a custom configuration to meet specific needs. For more information, email haitidomesproject@gmail.com or visit www.haitidomesproject.com

BASIC



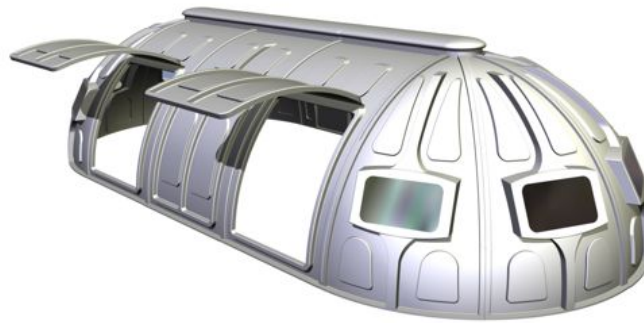
SIMPLEX



Dimensions: 18'x18'x9'	Occupancy: 1 family (up to six persons)
Area: 252 sq' (23.4 sq mtr)	
Components: 1 door, 2-4 windows, concrete floor (optional), multiple colors available	
Price: \$4,900 - \$5,400 USD	

Dimensions: 18'x25'x9'	Occupancy: 1-2 family (up to 10 persons)
Area: 378 sq' (35 sq mtr)	
Components: 1-2 doors, 2-4 windows, concrete floor (optional), porch door (optional), dividing wall (optional), multiple colors available	
Price: \$6,200 - \$6,900 USD	

DUPLEX • TRIPLEX • FOURPLEX



Size	Area	Price	Components
Duplex: 18'x32'x9'	504 sq' (46.8 sq mtr)	\$9,900 - \$10,800 USD	2 doors, 8-12 windows, 2-4 porch doors, solar lighting, concrete floor (optional), multiple colors available
Tripix: 18'x39'x9'	630 sq' (58.5 sq mtr)	\$12,900 - \$13,900 USD	
Fourplex: 18'x46'x9'	755 sq' (70.1 sq mtr)	\$15,900 - \$17,000 USD	

To have a representative contact you, please write to haitidomesproject@gmail.com

Down payment of \$1,500 per dome is required to hold place in production queue. Full cost is to be paid prior to delivery.