



FUNDACIÓN
María de
Guadalupe

2012-2026

Education that transforms



Our mission is to provide greater opportunities for children living in poverty through education.

We do this through an **innovative and inclusive model**, with the potential to be replicated nationwide. We currently serve **1,200 students in our schools** in Las Tunas and Garín and **more than 280 young people through the Employment Inclusion Program.**

In 2024, María de Guadalupe Las Tunas was awarded the World's Best School Prize in Community Collaboration.

WHO WE ARE

BOARD OF TRUSTEES

Ricardo Torres

Pablo Ostapovich

María Paz Mendizabal

Roby Souviron

Eduardo Bastitta

José Sosa del Valle

Federico Brom

Jorge Chrestia

Gonzalo Castillo

Marta Cordo

Ignacio Barrenechea

...and a team of more than 130 people passionate about education





IN THE CURRENT CONTEXT OUR MISSION IS ESSENTIAL AND URGENT

EDUCATION IN ARGENTINA TODAY



1 in 2 third-grade students **does not understand what they read**



2 out of 100 students living in poverty finish high school on time and with the expected knowledge



62% of low-income youth study and/or work



2 out of 10 young people access university

MARÍA DE GUADALUPE MODEL

All third-grade students understand what they read



71 out of 100 students graduate from high school on time and with the expected knowledge



87% of graduates **study and/or work***
* with greater access to quality jobs



1 out of 2 accesses university



WHERE WE ARE

Our schools are located in the **AMBA**, in areas close to popular neighborhoods, considered of high socio-economic vulnerability according to the Multiple Deprivation Index and with a high educational demand according to the Educational Offer Report of the General Direction of Culture and Education of the Province of Buenos Aires.



MARÍA DE GUADALUPE GARÍN SCHOOL
Escobar
Population: 115,000



MARÍA DE GUADALUPE LAS TUNAS SCHOOL
General Pacheco, Tigre
Population: 43,000

WHERE WE ARE

Our schools are located in the **AMBA**, in areas close to popular neighborhoods, considered of high socio-economic vulnerability according to the Multiple Deprivation Index and with a high educational demand according to the Educational Offer Report of the General Direction of Culture and Education of the Province of Buenos Aires.



MARÍA DE GUADALUPE GARÍN SCHOOL
Escobar
Population: 115,000

- located among **7 informal settlements** identified by ReNaBaP
- ~**10%** of the municipality's population **lives in informal settlements**
- ~40% of the population living in informal settlements is concentrated in areas surrounding Guadalupe de Garín
- 2,300+ residents of informal settlements within a <2.5 km radius
- 10,600+ residents of informal settlements within a <5 km radius

- located among **6 informal settlements** identified by ReNaBaP
- founded and **began to grow in the 1950s**
- covers an area of **109 blocks**
- ~**3,000 highly precarious dwellings**, home to families living in conditions of extreme poverty
- **42,000+ residents** of informal settlements

MARÍA DE GUADALUPE LAS TUNAS SCHOOL
General Pacheco, Tigre
Population: 43,000





OUR POPULATION

73% of parents didn't finish high school

62% live in substandard housing conditions

47% live in overcrowded conditions

FUENTE: ELABORACIÓN PROPIA EN BASE A ENCUESTAS SOCIOAMBIENTALES 2022



First cohort of **SECONDARY SCHOOL GRADUATES**

Opening of **MARÍA DE GUADALUPE LAS TUNAS SCHOOL**
1st cycle of Primary Level

2012



2019



2023



María de Guadalupe Las Tunas School is recognized as the **WORLD'S BEST SCHOOL FOR COMMUNITY COLLABORATION**

Moving forward with **EDUCATION THAT TRANSFORMS**



2026

2016



Opening of **SECONDARY LEVEL** - year 1 to 3 at María de Guadalupe Las Tunas School

2022



Launch of **EMPLOYMENT INCLUSION PROGRAM**

2024



Opening of **MARÍA DE GUADALUPE GARÍN SCHOOL** - Preschool and 1st Grade of Primary Level

2025



Opening of the **3-YEAR-OLD CLASSROOM** at Las Tunas and Garín





MARÍA DE GUADALUPE MODEL

1200 STUDENTS IN PRESCHOOL, ELEMENTARY & HIGH SCHOOL

- **Personalized support** for each student
- **Competency-based approach** and full-day instruction starting in primary school in a stimulating educational environment
- Career-oriented curriculum with a strong focus on **digital skills** (with mathematics and language as foundational pillars)
- A culture of **assessment and continuous improvement**
- Ongoing, context-based **teacher professional development**
- **Continuous engagement with students' families**



WORLD'S BEST
SCHOOL PRIZES



María de Guadalupe School was recognized as the **Best School in the World** in the **Community Collaboration** category at the **World's Best School Prizes 2024**.

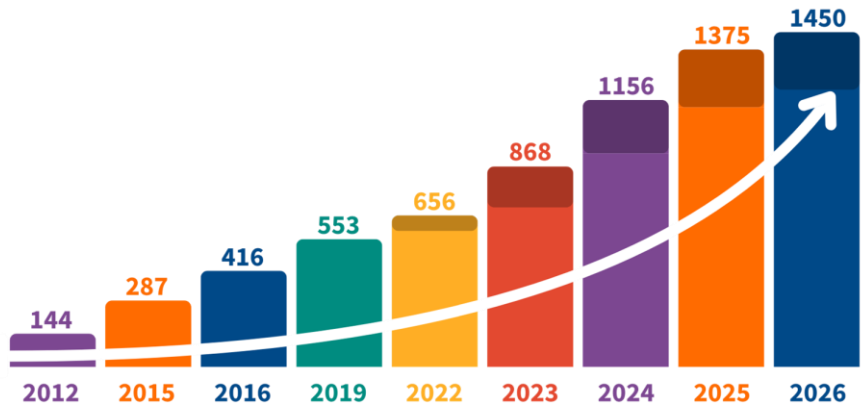
This award recognizes our comprehensive model in which -together with a community of volunteers, families, NGOs, companies, universities, and donors- **we promote high school completion, continued education, and youth labor market inclusion.**





- 14** years
- 2** schools for **1200** students
- 1200** students served
- 295** high school graduates
- 753** families actively engaged in the educational process
- 436** young people trained through the Employment Inclusion Program
- 544** companies, families, and donors who provide sustained support for the project
- 52** institutional partners
- 789** volunteers who contributed their time in 2025

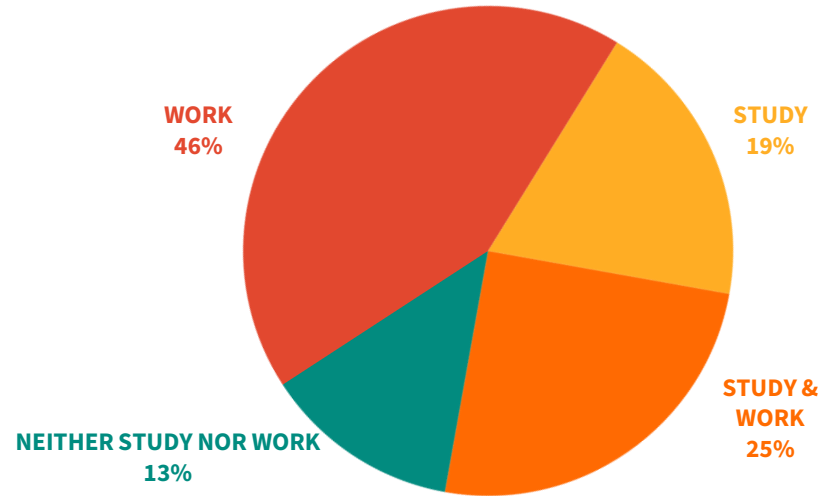
GROWTH 2012-2026





MARÍA DE GUADALUPE LAS TUNAS

- 750 students enrolled in Preschool, Primary, and Secondary Education
- 295 Secondary School graduates



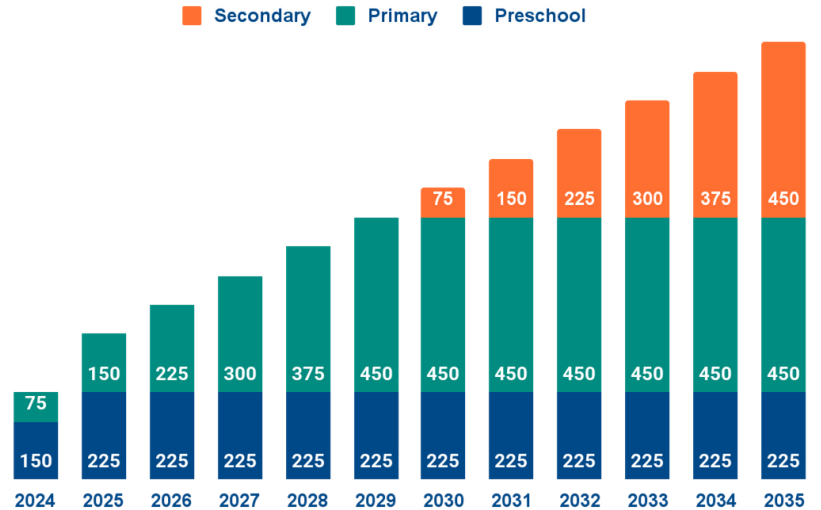
87% of our graduates study and/or work



MARÍA DE GUADALUPE GARÍN

- **450** students in Preschool and the first cycle of Primary Education (Grades 1–3)

PROJECTED GROWTH 2024-2035





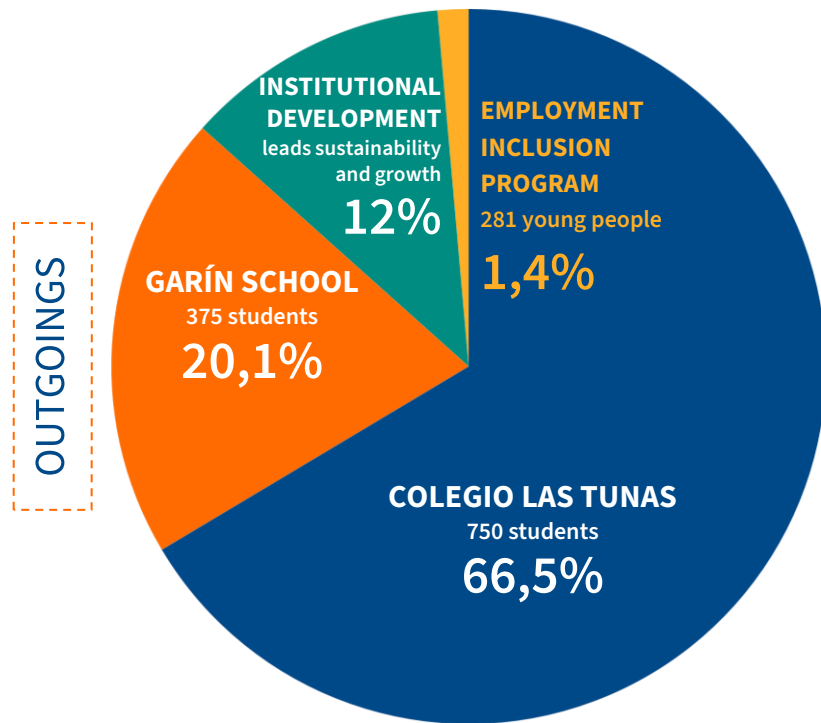
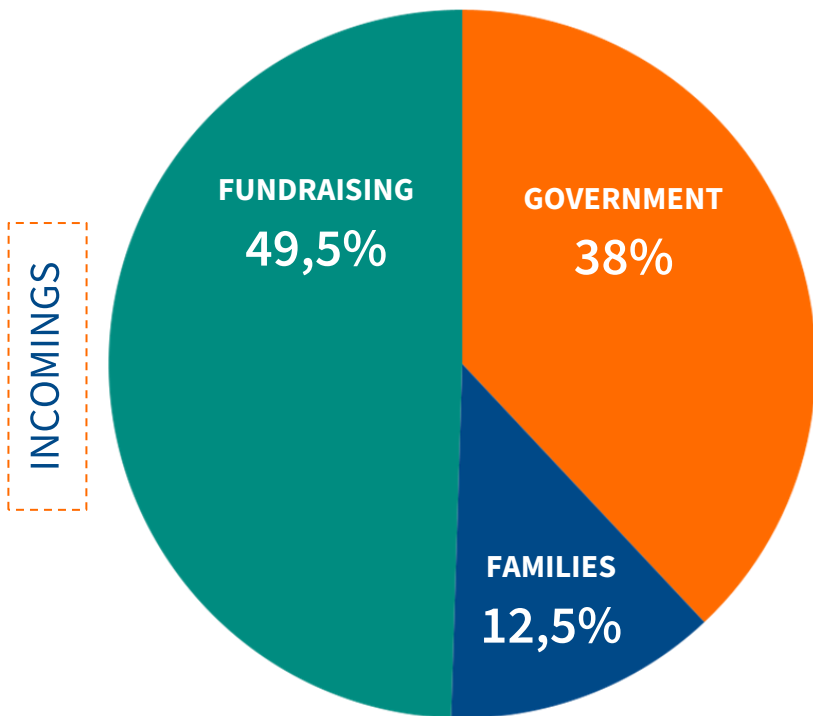
EMPLOYMENT INCLUSION PROGRAM

- **+400 graduates** from Colegio María de Guadalupe Las Tunas and neighboring institutions
- training in **digital** and **logistics skills**
- **career guidance** and socio-emotional skills development
- company visits and **mock interviews**
- **partnerships with companies to promote formal labor market inclusion**



50% of young people who complete the program **enter the formal labor market**

HOW WE SUPPORT OUR EDUCATIONAL PROJECT



QUALITY EDUCATION AT AN EFFICIENT COST

We aim to scale our impact, delivering high-quality education to young people in vulnerable contexts at a cost equal to or lower than public education.

COST PER STUDENT (HALF-DAY) BUENOS AIRES PROVINCE VS MDG

MONTHLY \$AR

\$193.577

732 h/yr



2 out of 100

students finish high school on time and with the expected knowledge

\$112.077*

1560 h/yr



-42%

71 out of 100

finish high school on time and with the expected knowledge

*FULL DAY (+4 HOURS) \$224.154

IMPACT EXPANSION

THROUGH:

- Growth of **María de Guadalupe Las Tunas School**
- Growth of **María de Guadalupe Garín School**

WITH THE CHALLENGE OF:

- **Replicating our educational model** in disadvantaged contexts
- **Inspiring** similar initiatives
- Making meaningful contributions to **public policy**



PROGRAMA DE PADRINAZGO

US\$100 per month
supports a student's education

Sponsors are a **fundamental part of the spirit of the Foundation**, and that is why we make them part of institutional life. The doors of our schools are always open to welcome them.

Their **financial support complements the state and family contributions** to ensure the sustainability of the project.

Each sponsor receives our periodic communications, two special reports with information on the students' educational results, newsletters, and special events invitations.

Sponsorship can be individual, institutional or from a group of people.



INSTITUTIONAL PARTNERS

MAIN SPONSOR

7 ANNUAL SPONSORSHIPS

US\$8.400

- **Double page** spread in the Institutional Yearbook
- **Main Sponsor** of the Annual Dinner (or another agreed-upon event)
- **Prominent brand presence** in the institutional presentation and website
- **Two customized annual reports** and accountability meeting
- Invitation to institutional events and initiatives
- Corporate volunteering day
- Participation in a working group alongside partners and members of the Board of Directors

SUPPORTING SPONSOR

5 ANNUAL SPONSORSHIPS

US\$6.000

- **Full-page ad** in the Institutional Yearbook
- **Supporting Sponsor** of the Annual Dinner (or another agreed-upon event)
- **Brand presence** in the institutional presentation and website
- **Two customized annual reports** and accountability meeting
- Invitation to institutional events and initiatives
- Corporate volunteering day

FRIEND SPONSOR

3 ANNUAL SPONSORSHIPS

US\$3.600

- **Half-page ad** in the Institutional Yearbook
- **Friend Sponsor** of the Annual Dinner (or another agreed-upon event)
- **Brand mention** in the institutional presentation and website
- **Two customized annual reports**
- Invitation to institutional events and initiatives

All donations are tax-deductible.

If contributions are made on a monthly basis, sponsorship amounts are adjusted for inflation on a semiannual basis.



FUNDACIÓN
**María de
Guadalupe**

VISIT US

<https://bit.ly/visitasMDG>

LEARN ABOUT US

www.mariaguadalupe.org.ar

FIND OUT THE NEWS

