

THNAL DACH EAST VILLAGE
**New Primary School
Building Development**

SOUTR NIKOM DISTRICT, KIEN SANGKAE COMMUNITY
SIEM REAP PROVINCE, CAMBODIA



New School Building Name

KYRIAKOS IOANNIDIS
DR. FRANCIS E. FOTWE
PRIMARY SCHOOL

Project Developer

ELQ INITIATIVE CIVIL NON-PROFIT ORGANISATION
t/as **THE REACHING OUT PROJECT**

Project Report

September 2025



Scan & Share
the Readable Version

TABLE OF Contents

| | | | | | | | | |
|----------|------------------------------------------|-----------|-----------|-------------------------------------------------------------------------------------|-----------|-----------|-----------------------------------------------------------------------|-----------|
| 1 | Project Sign Label | 4 | 8 | New School Project Development Basic Facts, Innovations & Photorealistic Designs | 16 | 12 | Budget, Working Packages (WBS) | 52 |
| 2 | The Reaching out Project Mission, Vision | 5 | 9 | New Project Impact Children & Education, Community, Society & Environment | 20 | 13 | Contractual Arrangements & Current Progress | 53 |
| 3 | Before vs After | 6 | 10 | New School Project Detail Characteristics & Project Description | 22 | 14 | Fundraising Matters | 54 |
| 4 | Demographics, Story of the Area | 8 | 11 | Architectural Concept Designs | 27 | 15 | The Reaching Out Project Innovation Our Impact To Society & People | 58 |
| | | 5 | | | | | | |
| | | 10 | | | | | | |
| | | 12 | | | | | | |
| | | 14 | | | | | | |

1 PROJECT SIGN LABEL

| | |
|-----------------------------------------|------------------------------------------------------------------------------------------------------------------------------------------------------------------------------------------------------------------------------------------------------------------------------------------------------------------------------------------------------------------------------------------------------------------------------------------------------------------------------------------------|
| Project Title | New Primary School Building Development, Thnal Dach East Village |
| Names in Honor | Dr. Francis E. Fotwe , Loughborough University Lecturer, UK Mr Kyriakos Ioannidis AGFA, IT Computer Programmer, Greece |
| Location | Thnal Dach Khang Kaeut Village , Kien Sangkae Community, Sotr Nikom District, Siem Reap Province, Cambodia |
| Project Developer | ELQ INITIATIVE Non-Profit Civil Organisation t/as The Reaching out Project |
| Operations* Programs SDGs | Primary SDGs: i) Schools & Education, ii) Children Secondary SDGs: i) Mental Health & Care, ii) Families & Communities, iii) Well-Being |
| Architectural Design Cooperation | ELQ Initiative, Greece & Mr Aris Kafantaris , kfms head and Architect in Kengo Kuma and Associates, Japan. |
| Design Type by ELQ Initiative | Vernacular Inspiration Architecture A Child-Friendly Primary School synthesising the comfort of global modern educational needs and standards together with Khmer tradition and living, with sustainability, local materials, community involvement, and adaptability to the environment that fosters an on-going exchange of skills, ideas and learning of the children, allowing for reconfiguration and flexibility to accommodate different learning activities and class sizes. |
| Cambodian Authorities | Sotr Nikom District MoU with The Government of the Kingdom of Cambodia |
| Type of Contract | I.P.D. multi-party Collaborative Agreement with D-B-T (Design, Build & Transfer) arrangements |
| New building area/ new surrounding area | 165m²/350m² |
| New School Operator | Kien Sangkae Community/ Sotr Nikom District |
| School Advisors | Principal Mr Ly Bundarath & Teacher Mr Lach Rawhy |
| Project Budget | est. 78,500 US Dollars funded and sponsored 100% by ELQ INITIATIVE (t/as The Reaching out Project) |
| Completion Time | est. April 2026 |

2 THE REACHING OUT PROJECT MISSION, VISION

“The Reaching out Project”, operates directly on Cambodia ground, supporting children, schools, and communities.



Our Mission

is to improve and transform the lives of impoverished and vulnerable children in Cambodia and beyond.

Our Focus

is on imparting knowledge and education within a sustainable, safe, and secure environment that fosters growth, preventing children from dropping out of school and strive to improve their mental health and break the cycle of poverty.

Our Vision

extends beyond merely supporting these children. “The Reaching Out Project” is our heartfelt initiative, aiming to become a beacon that signifies our commitment to leaving behind a better world, where help and support go hand in hand with kindness, dignity, and respect.

3



Vs

After
(back yard, lake view side)

Before
(back yard, lake view side)



The Reaching outProject

4 DEMOGRAPHICS, STORY OF THE AREA

Kien Sangkae Community

- Considered as a very poor community in Siem Reap Province.
- Mainly occupation: seasonal farming, fishing, part time workers.
- Unsuitable drinking water for majority of the population.
- Living conditions: damaged aluminum or timber huts with limited security and safety.
- Lack of transportation and poverty prevent children of schooling.
- Lack of Teaching Classrooms in village has enhanced migration to other communities.



SIEM REAP PROVINCE



Community Population: 12154
Children 0-12: 2941

Village Population: 1038
Children 0-12: 221

Needs-Destination

- Unique characteristics of each school & community, thus we carefully design our programs & projects with focus on continuous schooling for children.



- Building not just schools but developing a child-friendly place where children can be educated, build their future undistracted and socialised, safe and secure from any injury and mental health disorders.
- Our philosophy and innovation behind of each program and project we implement is **“Shoulder to Shoulder”** from Primary School up to University.

ELQ Initiative Operations

- We operate in Cambodia as an official registered FNGO, signed an MOU with The Government of the Kingdom of Cambodia.
- Since 2022 in Sotr Nikom District, among others in Cambodia, we support many communities, schools and over 1200 children.
- Through our integration of children’s needs innovative system, we have a chance to break the cycle of poverty for this young generation leading them towards a path of education and sustainable growth.



5 EXISTING SCHOOL CURRENT STATUS

“A NEED FOR A CHANGE”

Current Status- Problem Definition

- Thnal Dach current old Primary School consists of only **2 & ½ unsuitable classrooms**, accommodating **113** children for **6 Grades**: **serious** defects critical for children injuries.
- 2 grades per classroom **versus** quality of teaching **versus** excluding children from educational opportunities.
- **Poor Education & inadequate building**, eventually lead families to keep children away from school or moving to other schools in district, miles away.
- **If no actions taken**: 1. children **will drop out of school** and 2. number of enrolments will decrease dramatically.

In Numbers

Community records

- Current children Thnal Dach East Village: **221 out of 1038 village population**.
- **58 children have moved** to other villages and primary schools due to lack of classrooms in Thnal Dach East Village.
- **50 children between 1-5 years old** have no kindergarten risking of never go to school or migrate to other villages with their families.

Our aim

- **With the New School building we regain the majority of 58 children** currently left in other schools and keep the 50 children (from 1-5) and their families within the village through a kindergarten class.
- **Our new School building can accommodate additional children** from neighbor villages because the new spacious facilities and unique design of classrooms.
- In 3-4 years estimated to double children enrolments.



6 EXISTING SCHOOL CHARACTERISTICS, CHILDREN & VILLAGE STATUS

Current School Aptitude

- Thnal Dach Primary School has strong **musical & theatrical aptitude**.
- **Teaching of Khmer Civilisation's Traditions** aging back to centuries *versus* current old & unsuitable building.
- With the New School Building, we **enhance this theatrical and dancing aptitude**.
- Establ. of the first School Theatrical & Dancing Team for National Competitions.

Families Condition

- Unfortunately, poor families cannot support children.
- Only Two teachers of current school cannot ensure the level of education to these children.
- Lack of Transportation, and infrastructure projects within Community and extreme poverty lead children to drop out of school permanently.

Cruel Reality but Better Tomorrow

- **Parents migrating from village** so children grow up with grandparents if any. That leads to frequent absences and finally to drop out of school permanently. Some follow their parents to cross boarder migrants getting odd jobs to the best.
- Children show violent behavior as lack of parents control and often express inappropriate behavior.
- **Mental Health issues** are not particularly addressed by children and without being able to communicate these disorders.



- **THE CHANGE:** as the new multiuse school building allows children expressing their emotions, skills, anything that now is hidden and keeps them isolated.
- **Number of teachers will be increased** due to the new school building, hence more efficient control of children behavior.
- **New School Building Project to become a beacon,** the center of children's lives & Community's activities.

7 ELQ INITIATIVE CURRENT SUPPORT & OPERATIONS

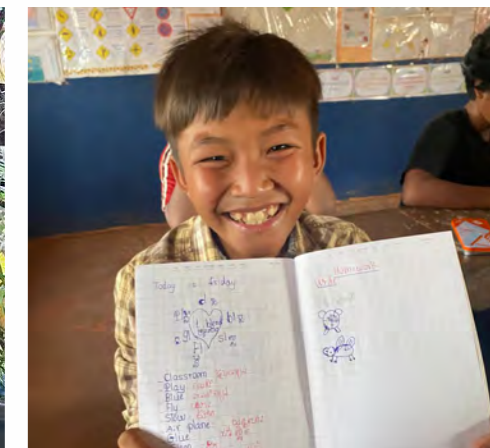
Since 2023 “The Reaching out Project” supports Thnal Dach Primary School and its students, responding immediately to their call as following:



- SDG: Schools & Education. **We support and cover all children’s academic expenses annually as books, stationary, bicycles, study desks, pens, pencils, notebooks, etc.**



- SDGs Programs: a) Children b) Zero Hunger, , d) Well-being. Since January 2024 we implement a **Fruit & Nutritious food program.**



- SDG Schools & Education (Quality Education). **We sponsor the English Teaching Program and Teachers’ Salaries for all Primary School students and those graduated being currently in Secondary School, providing also all the English books.**
- SDG Program Quality Education. **We already provide a scholarship in one teacher in Thnal Dach Primary School to gain his Master degree in Education Science aiming improving teaching.**



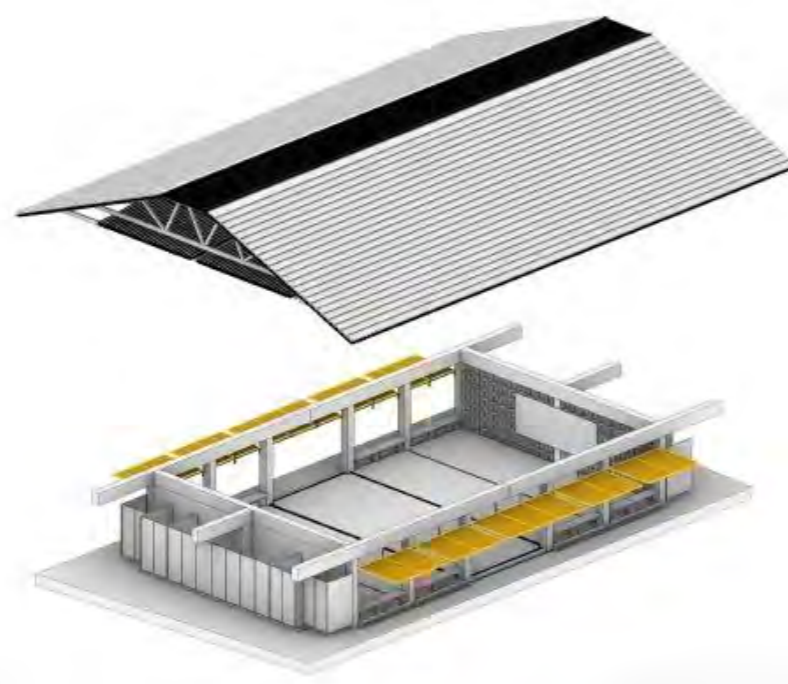
- SDGs: a) Children, b) Zero Hunger, c) Family & Communities. **We provide rice to poor families and their children with that “Rice Food Program”, helping them continue schooling.**
- SDGs: a) Schools & Education (Quality Education), b) Mental Health. **We initiate music and dance teaching classes** due to strong children aptitude in art and tradition.
- SDGs: a) Children, b) Family & Communities. **We seek solutions and finding ways to improve children educational and living conditions through “Shoulder to Shoulder” Program.**

8

NEW SCHOOL PROJECT DEVELOPMENT BASIC FACTS, INNOVATIONS & PHOTOREALISTIC DESIGNS

New School Development basic facts

- i. **An IPD Agreement** between ELQ Initiative and Soutr Nikom District Authority for the development of a new school building as an urgent need of Thnal Dach East Village.
- ii. With Project completion, ELQ Initiative will deliver to the Children, District & Community **a new modern child-friendly school building, meeting modern education & teaching standards, providing a better future for them.**
- iii. **Enrolments** est. to be increased by **minimum 30% in the first 2 years.**
- iv. **Each classroom** will be assigned to one teacher **for each Grade.**
- v. **Project is funded by The Reaching out Project** (ELQ Initiative).
- vi. **An award winning design** in Cooperation and Partnership of ELQ Initiative and the Leading Architects of the Japanese firm Kengo Kuma and Associates and Heads of **kfms**, Tokyo, Japan.
- vii. **A multiuse teaching** building with features to host teaching and various social and school activities weather protected.
- viii. The New School Building will include **two libraries** so children to expand their knowledge through a variety of books.
- ix. **Project School Building Development** is a landmark building with unique modern teaching features aligned to the respectful Khmer civilisation.



- x. The New Project School Development is a successful collaboration between The Reaching out Project Management Team, **Volunteers and Experts in Cambodia and Greece working day and night to deliver the Project.**
- xi. **Our worldwide Donors and Supporters make this project true**, changing the lives of the children in community.
- xii. **Improving Economy, Skills Labor, Temporary and Permanent Jobs.**
- xiii. **Sustainability and Environment Protection.** Limited concrete, modular ways of construction, ecofriendly materials just some of new school building features worth to mention.

Design & Construction Innovations

The new School building project development carries various important pioneer features and innovations.

- **Child-Friendly** Primary School.
- A landmark building with **unique design.**
- School building & Children **Interaction** & Community Involvement.
- **Modern class teaching** standards, facilities & equipment.
- **Eco friendly** and **local materials.**
- **Khmer culture** and tradition's design **oriented.**
- **Sustainability** in Construction & Operation.
- **Adaptability to the environment** that fosters an ongoing exchange of skills, ideas and learning of the children and improving their **Mental Health.**



- Allowing for **reconfiguration, space transformation and flexibility** to accommodate **different learning activities** and class sizes, hosting various **school and community events** (one undistracted single space).
- Quiet and **Study Zones.**
- **Award Design roof** & construction innovations allows physical light and air at all times.
- **Physical air and light** providing a **healthy environment** for children at all weathers.
- **Light and solid structure.**
- **Lean use of Concrete.**

- Easy operate and maintain (**manuals providing**) .
- **Modular parts** for replacing or expanding according to the needs.
 - **Outside Play yard areas** for sports and gathering.
 - **Most Innovations** in Cambodia of school ever before.



“ We call it a building of interaction between children and people. A beacon for Community and District.



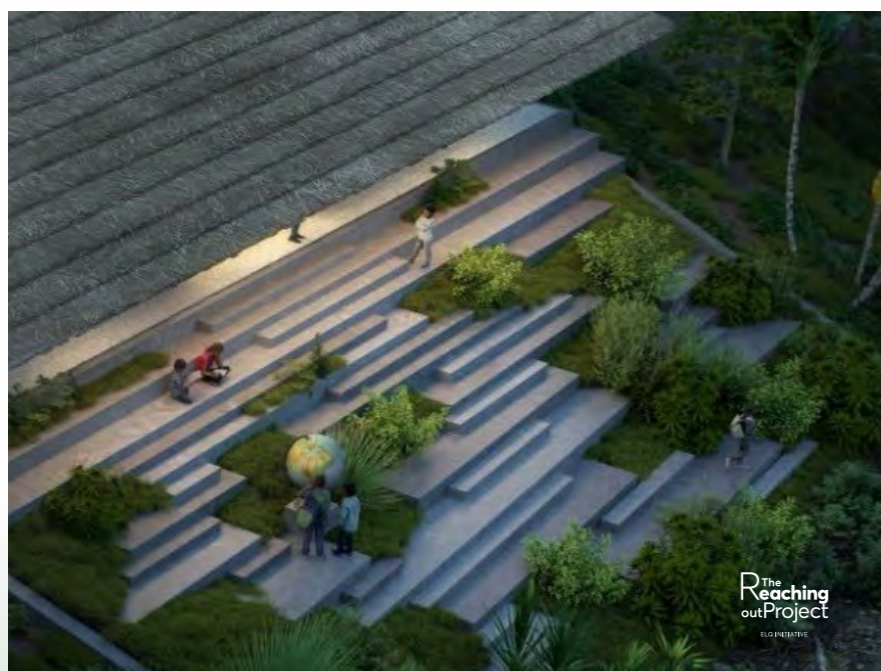
The Reaching outProject
ELQ INITIATIVE



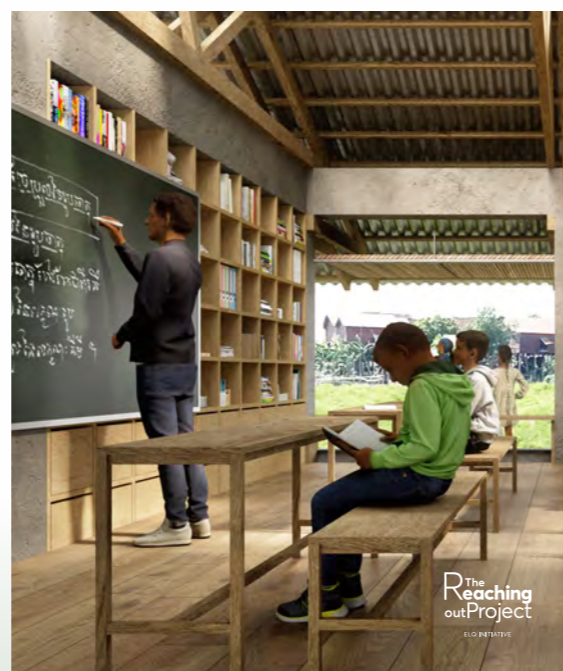
The Reaching outProject
ELQ INITIATIVE



The Reaching outProject
ELQ INITIATIVE



The Reaching outProject
ELQ INITIATIVE



The Reaching outProject
ELQ INITIATIVE



The Reaching outProject
ELQ INITIATIVE

9

NEW PROJECT IMPACT

CHILDREN & EDUCATION, COMMUNITY, SOCIETY & ENVIRONMENT

Our new School Development has enormous positive impact in rural Cambodia and is fully complying with the scope, mission and vision of The Reaching out Project.

Children & Education Impact

- **One Classroom per each Grade** versus today's 2.5 Grades per Classroom.
- A modern place for **teaching, studying, socialised**, improving their skills.
- **Two libraries**, quiet zones for private studying and workshops.
- **Mental Health Improvement** & Motivation for continuing school
- **A child-friendly school** protecting and securing children.
- **Enhancing the advanced knowledge** and teaching, including Additional Teaching Programs.
- A unique teaching experience for all, **minimising destructions** during the class.
- **Sustainable growth environment** for children with better chances in Education.



“A new home for learning, for all”

Community Impact

- **Integrated needs solutions.**
 - Families support children attend school daily.
- **Increase of Enrolments** by minimum of 30% in starting years.
- **Families gain migration back to Community**, thus increasing population.
- Stability and Sustainability in Community's growth.
- A landmark school building for **multiuse events and ceremonies for Children and Community**, “a beacon to be proud of”.
- **Easy and low cost maintenance.**
- **“Skills personal qualification construction certificate”** provided by The Reaching out Project and Constructor.
- **Socialisation communication hub in community** (discuss, exchange ideas, community's meetings, ceremonies).



Society and Environmental Impact

- **Enhancing Society's Educational level and influence.**
- Sustainable development & **Cambodia vernacular architecture.**
- **Improving economy** and local wages.
- Use of **local materials, local labor** and workers.
- **Improving side economy** due to the new school building side activities.
- **Improving District impact and image**, an example for more developments.
- **Introducing contemporary techniques** creating a new, locally rooted **typology for schools.**
- **Re-thinking** of Humanitarian Organisations' Operations: An Integrated Holistic Approach of “The Reaching out Project” case.
- Landmark school facilities for **visiting purposes**, Universities, hosting exhibitions, workshops, meetings, seminars, District ceremonies and events.
- Environmental friendly, design, construction & operation .

10

NEW SCHOOL PROJECT DETAIL CHARACTERISTICS & PROJECT DESCRIPTION

Project Major Features

i

New School Building Project Development is implemented under **The Reaching out Project SDGs system**: a) Schools & Education, b) Children, c) Well Being for Children and Community, d) Mental Health & Care.

ii

School Design Contract: A Cooperation between the ELQ Initiative (The Reaching out Project), Athens Greece and the kfms heads and Architects in Kengo Kuma and Associates, Tokyo, Japan, both ensuring that the new school project meets the standards of children' needs and education purposes and all the criteria of the scope and mission of the ELQ Initiative Humanitarian Organisation.

iii

Improves quality of education, children's lives in conjunction with local environment, Khmer civilisation and local Community involvement, under a sustainable integrated project development.

iv

ELQ Initiative funds are covered by worldwide donations and our supporters. The New School Project Development Fundraising Campaign is open to the public for donations.

v

When completed, **the project will be delivered to the District and the Community, together with Operation's Manuals handover.**



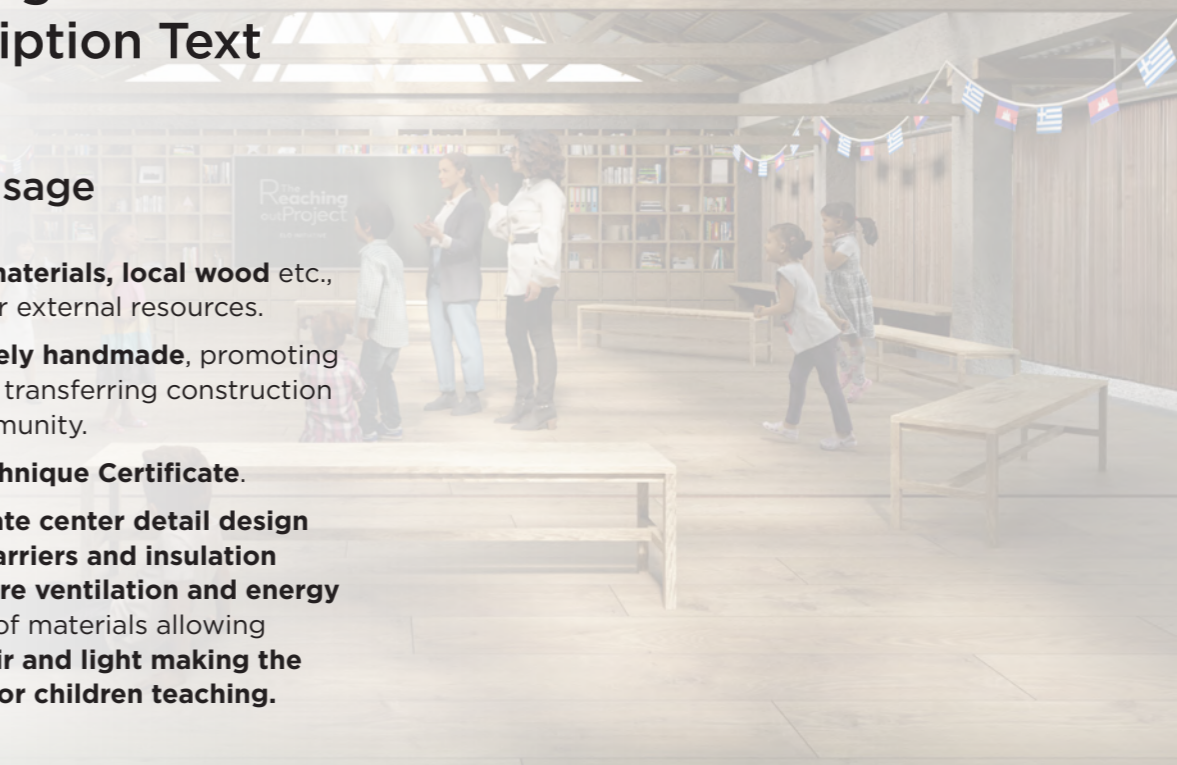
Preamble

- **In essence**, the new Thnal Dach School Project, **prioritises global modern teaching standards, utilizes local materials, community involvement, and adaptability to the environment creating longstanding sustainability.**
- **It merges vernacular intelligence and local craftsmanship with simple modern techniques**, creating a climate responsive, flexible, child-friendly school and community-oriented space – **a sanctuary for children that fosters their knowledge, their skills, the level of education and a shared hub for the entire village and community.**
- **A unique design incorporating features allowing reconfiguration and flexibility to accommodate different learning activities, culturally relevant learning spaces and class sizes and promoting first class results in education quality and sustainable longstanding growth of local Community and District.**

School Building Project Description Text

i. Sustainable and Local Material Usage

- **Local soil and gravel materials, local wood** etc., minimising the need for external resources.
- Is designed to be **entirely handmade**, promoting **local employment** and transferring construction techniques to the community.
- Innovation: **a Skills Technique Certificate.**
- **Roof with polycarbonate center detail design incorporating vapor barriers and insulation materials used to ensure ventilation and energy efficiency.** The choice of materials allowing the **continuous fresh air and light making the environment friendly for children teaching.**



ii. Adaptable and Reconfigurable Designs

- It features a **“climbable and reconfigurable structure”** where children can interact with the building as a multi skill natural center.
- The design incorporates **“Griddy” details and innovations, allowing for the easy reconfiguration of openings, shelves, and lockers.**
- **This adaptability extends to connection between interior and exterior spaces,** allowing for customisation based on children and community needs.

iii. Addressing Specific Needs

- Current Project focus on specific needs within the Cambodian context, such as **providing high quality education with modern class facilities.**
- More to come: **ELQ Initiative focuses on building rural village schools in underprivileged areas, providing access to education for more children** in those communities and the best possible chances to continue schooling up to University.
- **New School is designed to host various community’s activities and events;** equipped with technological facilities will encourage skills improvement, teamwork and mental health improvement; Community will benefit a building for multiuse purposes contributing to life and economy growth.

iv. Holistic Design Approach

- Current Project aims to create not just functional school buildings, but also **aesthetically pleasing and environmentally friendly spaces that integrate with the surrounding landscape.**
- **Large list of Design & Construction Innovations.**
- **The Reaching out Project** through this new school building development **aims to demonstrate a typology in Cambodian school design and teaching standards that values sustainability, community and children engagement, and adaptability to local conditions,** resulting in unique and meaningful learning environments.

v. Community and Children Involvement and Collaboration

- The Reaching out Project **programs and actions emphasises collaboration with children, teachers, local communities, Districts, Experts, Partnerships, Schools, Suppliers and Contractors.**
- Thnal Dach New School Design: **ELQ Initiative used a long feedback from Teachers and Community to establish all the design parameters and features** of children and teaching needs and enclose them to the final designs.
- **Building Trust International to foster an on-going exchange of skills and ideas.**
- **Children Involvement:** During Construction. The Reaching out Project will launch an academic program and tutorials of learning to students

the construction phases **“Learning your School Building Class Program”**: information about their school, materials used, construction techniques that are able to understand and building components.

- **Children to express skills in physics and basic engineering, Khmer culture and traditions in building structures: examples and tutorials for all classes.**
- **Construction and Site visits by Universities and Universities’ students** to learn and become part of this Innovative School Development Project.



11 | ARCHITECTURAL CONCEPT DESIGNS

Cambodia Thnal Dach East Village
New Primary School Building Development

Owner/Project Developer: **ELQ Initiative** Civil Nonprofit Organisation, Greece

Architectural Design: **kfms** Tokyo - Aris Kafantaris & Mate Meszaros

concept designs
August 2025

kfms

BASIC INFORMATION

Location Tokyo, Japan

DESIGN PHILOSOPHY

Kfms is a design consultancy headed by Aris Kafantaris and Mate Meszaros, who met and collaborated on numerous projects during their tenure at Kengo Kuma and Associates in Tokyo. Drawing from over a decade of experience in one of Japan's most renowned architecture offices, we combine deep respect for place and culture with an understanding of global design excellence.

Our approach prioritizes adaptability and longevity: we design buildings that can evolve with changing needs, reducing the environmental impact of demolition and reconstruction. Through flexibility of function and timeless character, our projects feel as though they have always belonged to their setting—making it difficult to define the exact era of their creation.

Our design philosophy is rooted in Japanese sensibilities: the local landscape, craftsmanship, and materiality shape the project from its earliest concept to its finest details. This is complemented by our international experience, leading complex projects from master planning to interiors, ensuring design quality at every scale.



vision

SALA a home for learning

Commissioned by the **ELQ Initiative Civil Non-Profit Organisation**, Greece, and designed by **kfms Tokyo**, SALA – a home for learning is an architectural concept for a new primary school building in Thnal Dach Village, Cambodia, created to complement and expand the existing school. The word sala—from the Sanskrit śālā, meaning hall or house, and still used across Southeast Asia, including in Khmer and Thai, to describe open or lightly enclosed pavilions for gathering, learning, or rest—connects this project to a shared architectural heritage spanning continents. Elevated above floodwaters and shaped by the climate, the design creates a safe, child-friendly school building that merges Cambodian vernacular wisdom with simple modern techniques: a generous gabled roof, filtered daylight, passive ventilation, and flexible spaces for study, play, and community life. Beyond a single work of architecture, SALA is conceived as a modular system—adaptable and repeatable across different sites in Cambodia—offering a resilient, welcoming, and scalable model for education, rooted in place yet informed by global design expertise.

View from the river

Contemporary architecture that belongs to the place



Strategies and Focus

Inspiration

SENSE OF PLACE

LIGHT AND AIR

FLEXIBLE LEARNING



Strategies and Focus

Translating requirements to architecture

SENSE OF PLACE

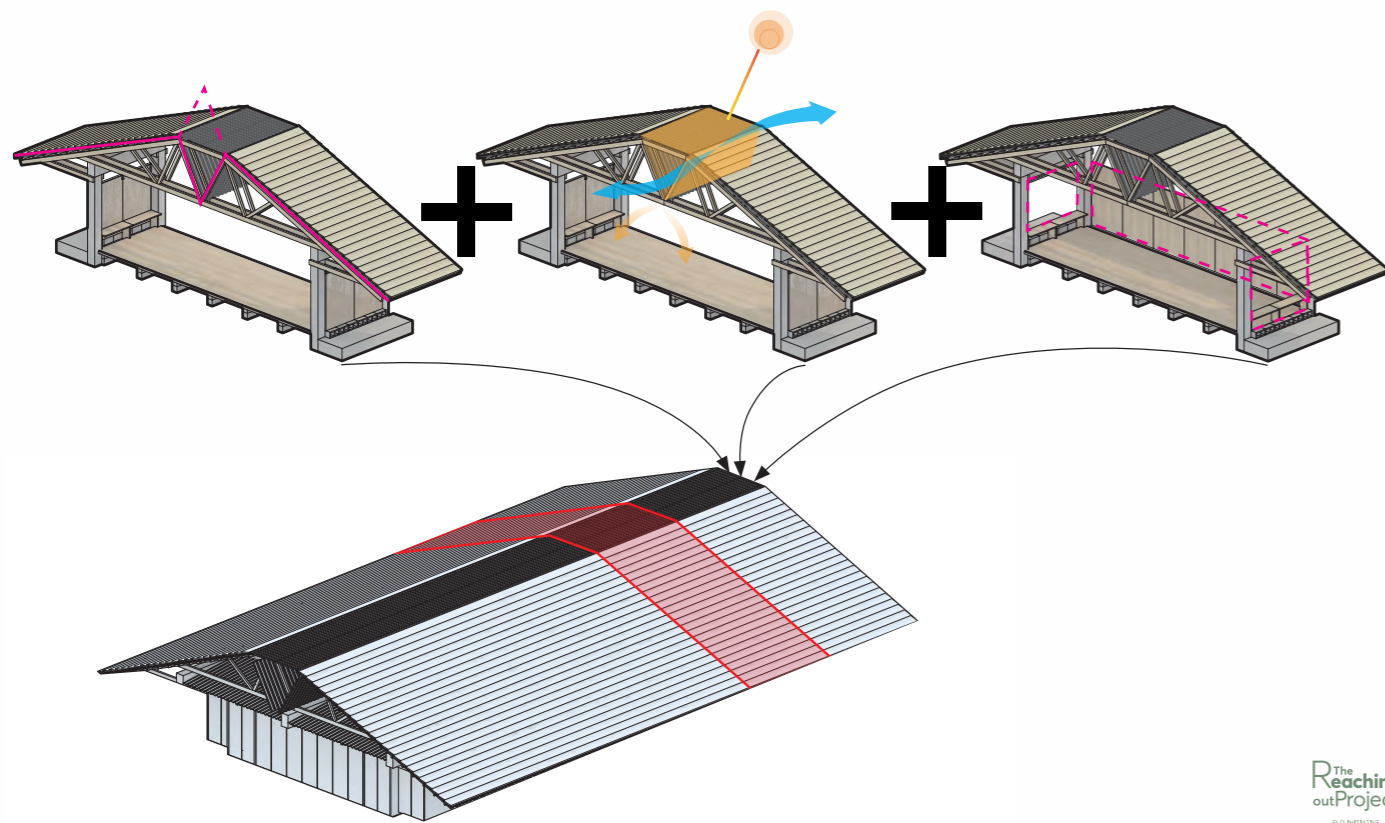
Recombining the Khmer pitch roof and skylight typology

LIGHT AND AIR

Roof as a mechanism for passive ventilation and diffuse lighting

FLEXIBLE LEARNING

Openable and removable partitions offer flexibility and extendability



The Reaching outProject
ELQ INITIATIVE

Skylight

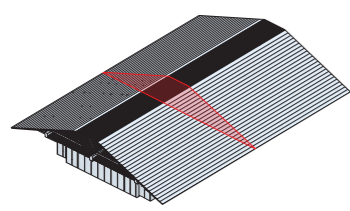
A new take on a local architectural element, that illuminates and ventilates



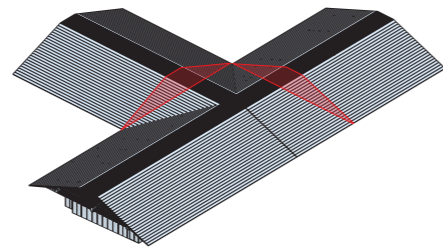
The Reaching outProject
ELQ INITIATIVE

Adaptable to any site condition

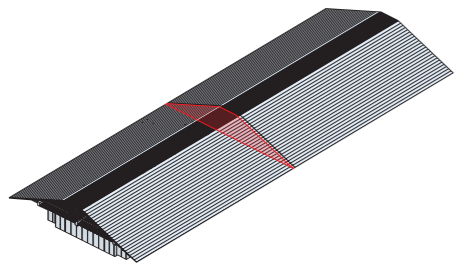
Endless possibilities for permutations - modular design - several patterns



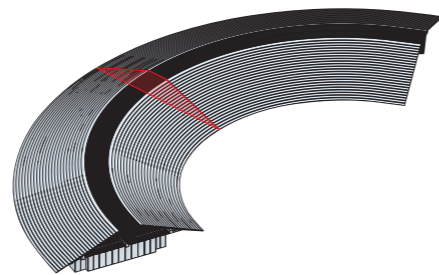
Single volume with 2 classrooms



Intersecting volume with 6 classrooms



Elongated volume with 4 classrooms



Half circle with 4 classrooms

Bird eye view

In dialogue with the existing school, creating new spaces for play, learning, and community activities



The Reaching outProject
ELQ INITIATIVE

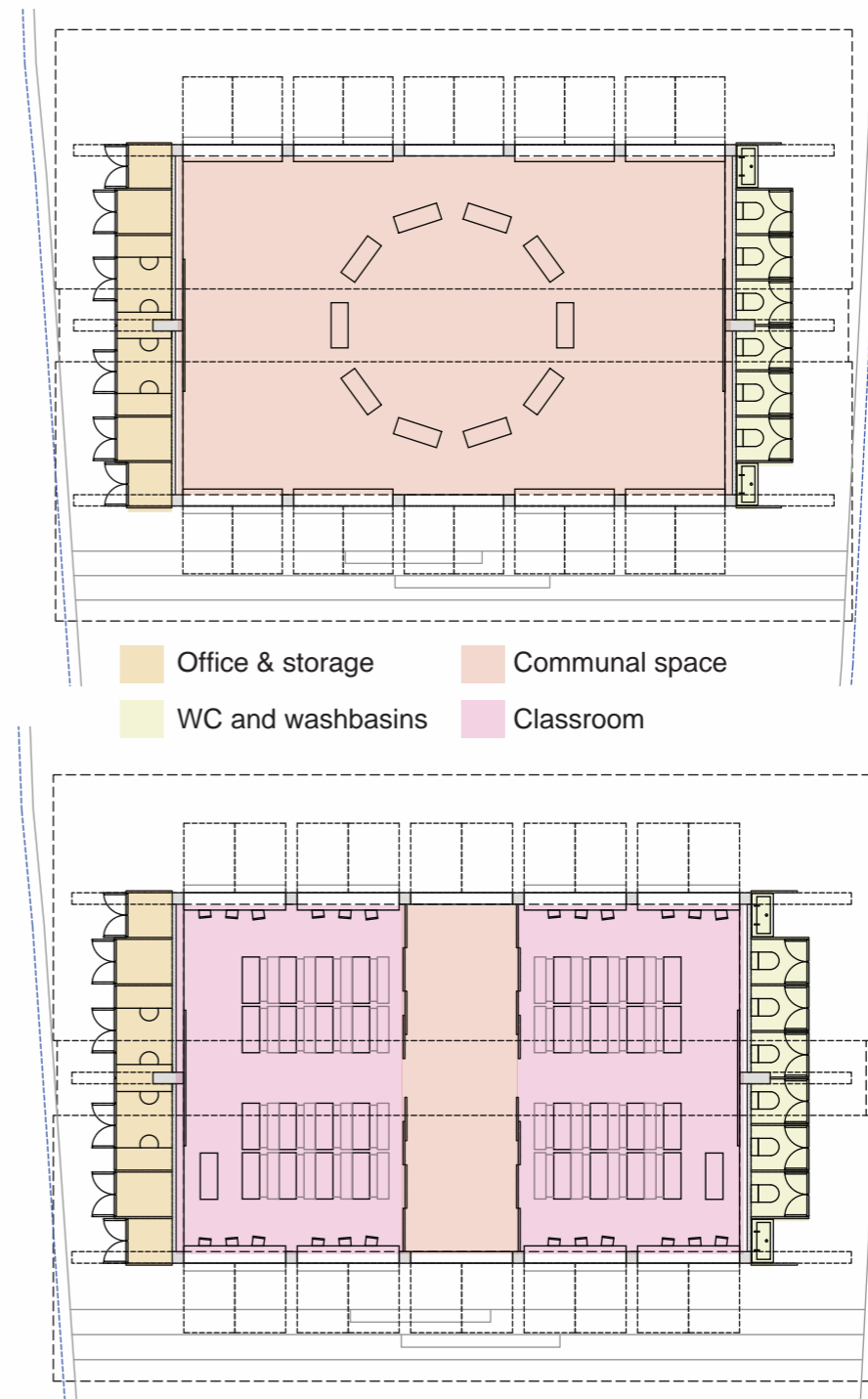
Site plan

In dialogue with the existing school, creating new spaces for play, learning, and community activities



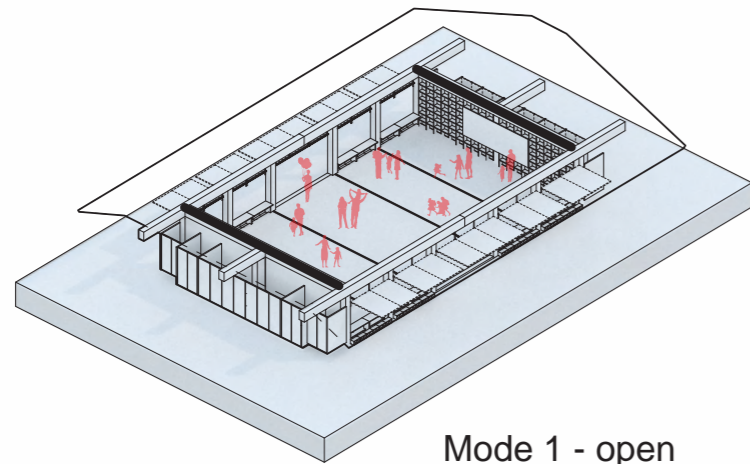
Flexibility

The building provides different spaces for different activities

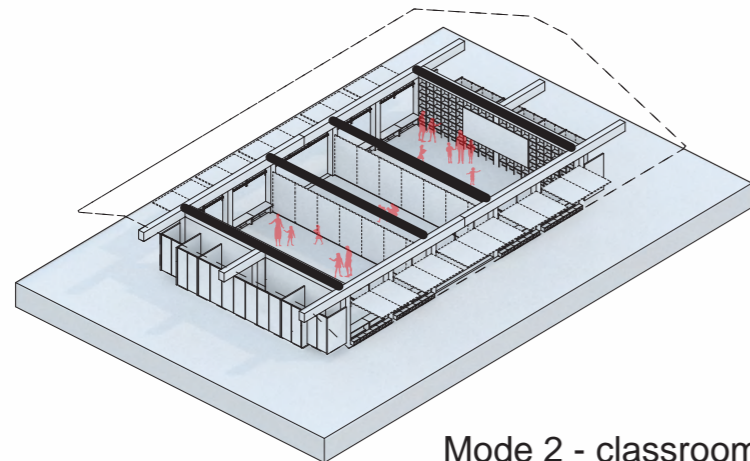


Flexibility

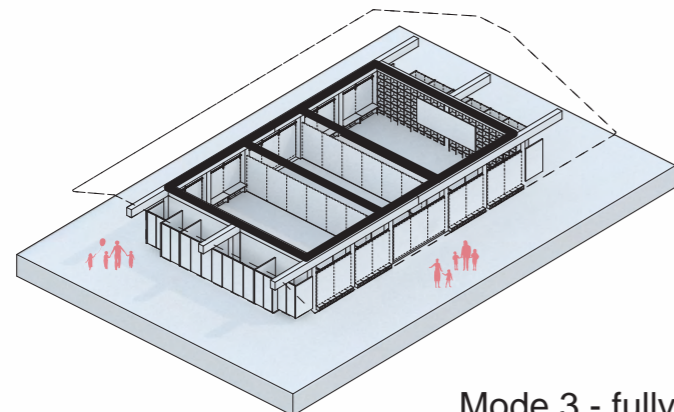
The building provides different spaces for different activities



Mode 1 - open



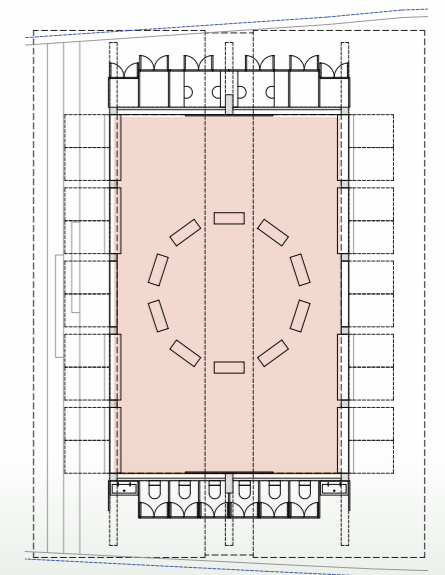
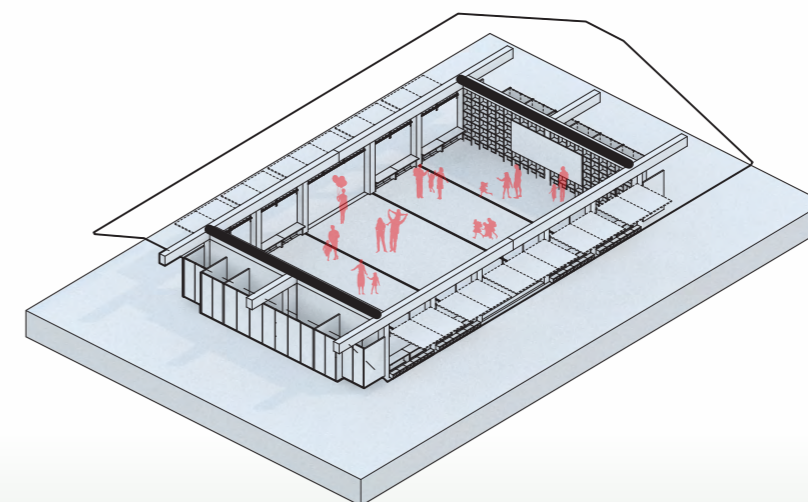
Mode 2 - classrooms



Mode 3 - fully enclosed

View from courtyard

Classrooms can open toward each other and to the surroundings, creating one multifunctional communal space



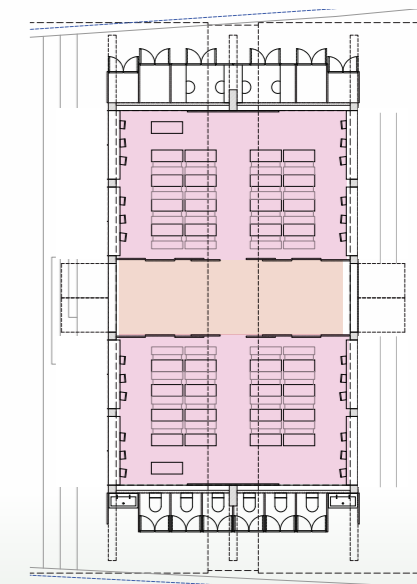
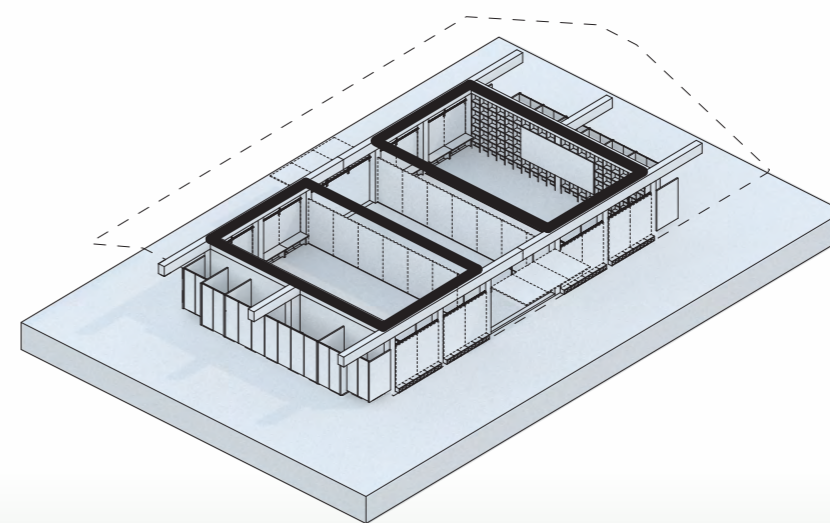
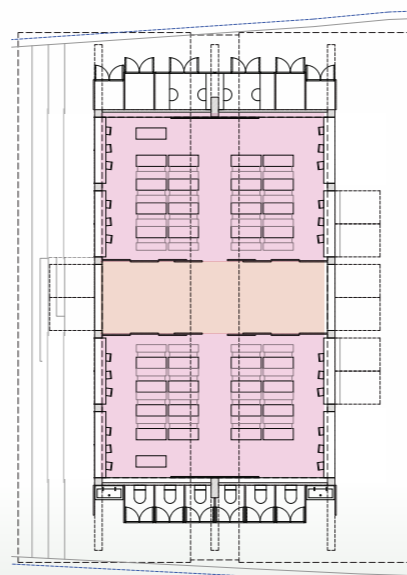
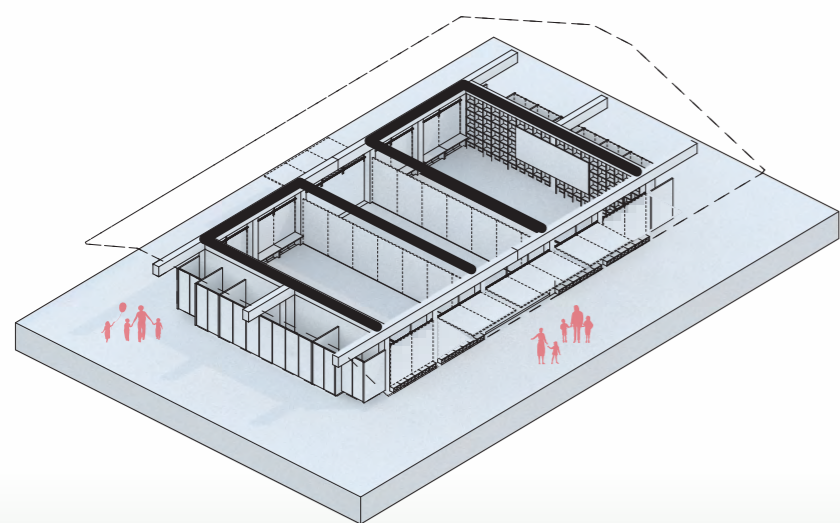
View from courtyard

Classrooms can operate independently and separately, while maintaining the connection to the courtyard or river.



View from courtyard

Classrooms can be closed off for maximum privacy and weather protection



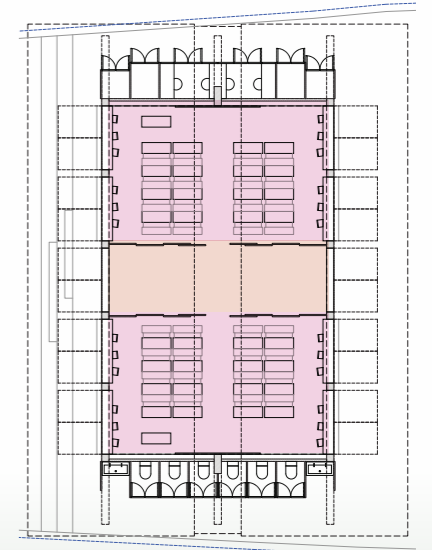
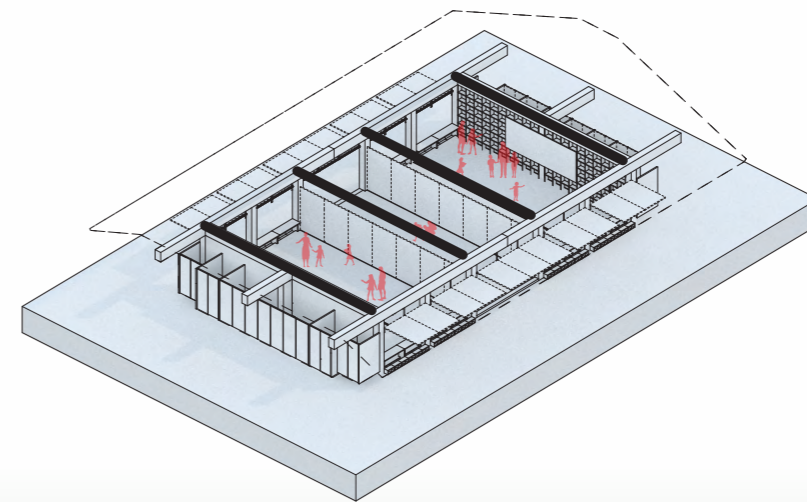
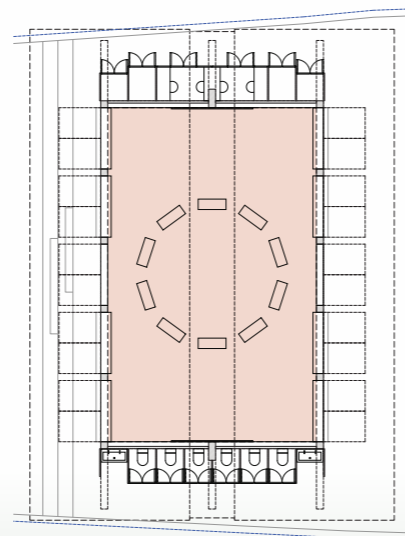
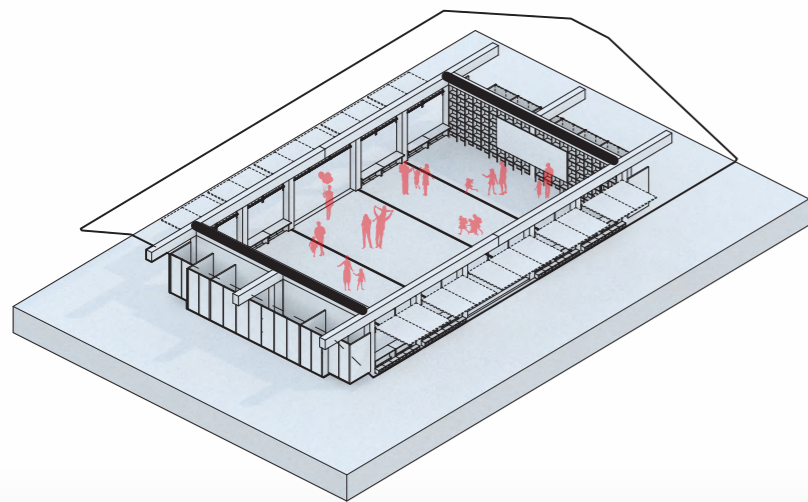
Interior view - classroom

Mode 1: open Community hall, one large multifunctional space



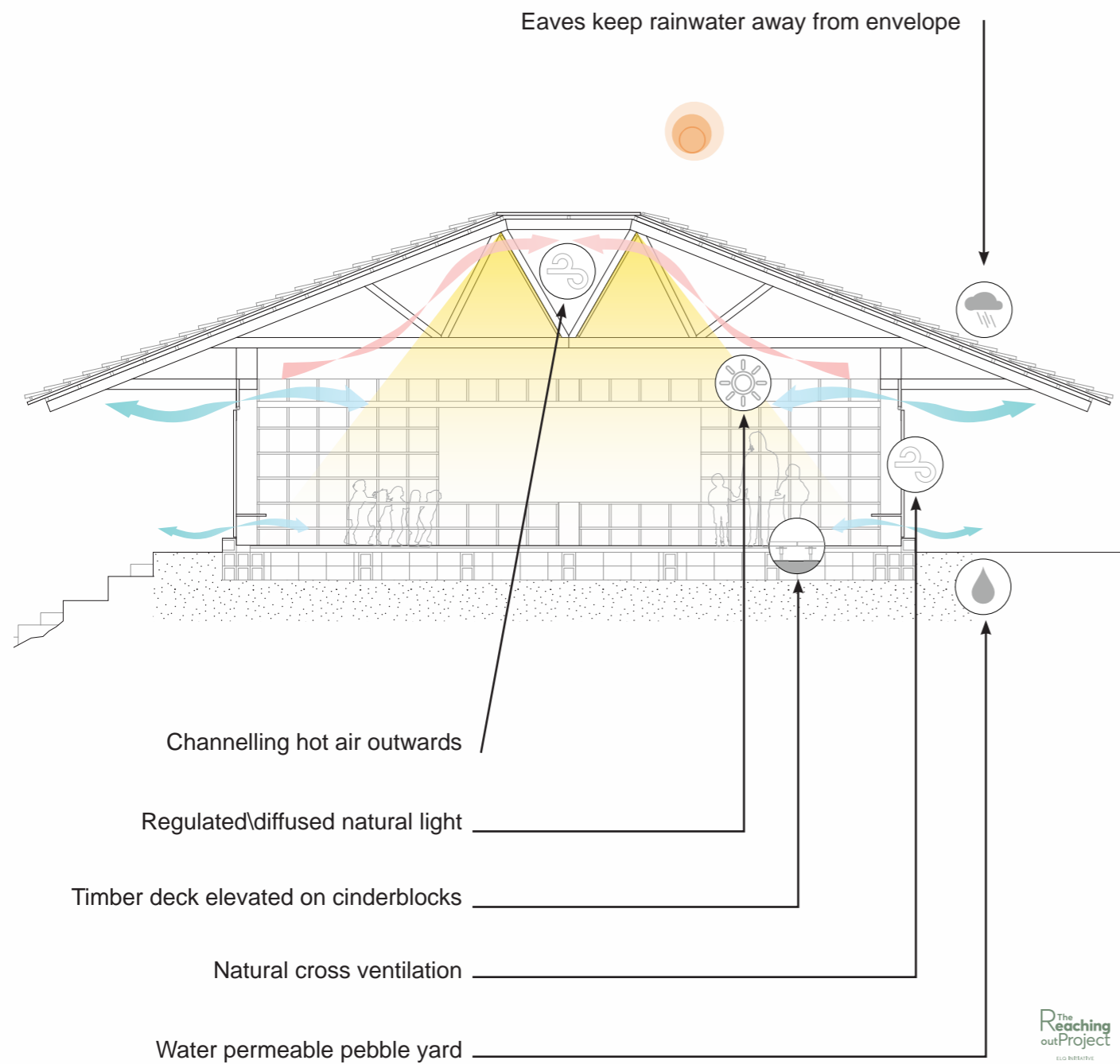
Interior view - classroom

Mode 2 - independent classroom, open to the landscape (weather permitting)



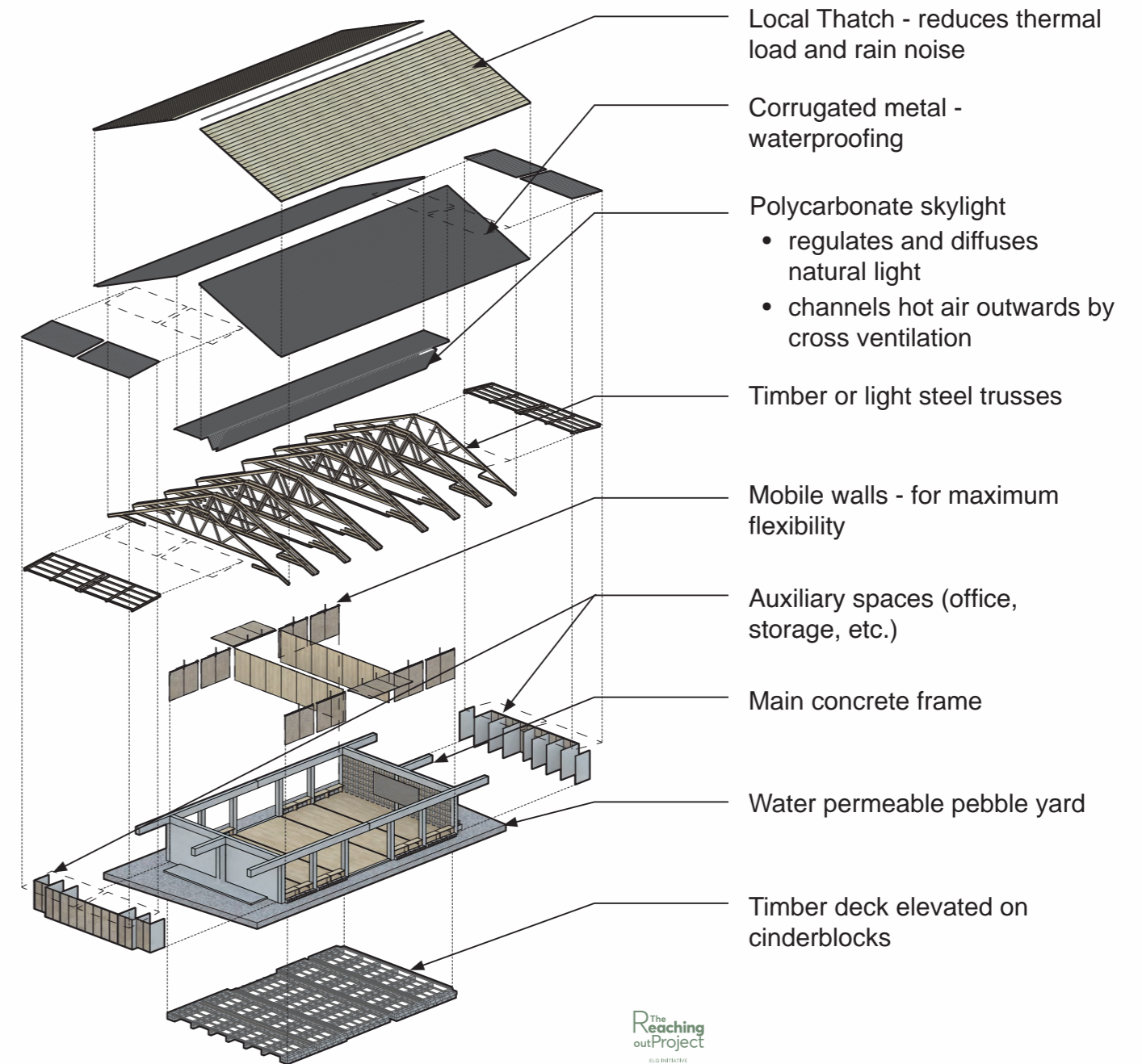
Section

Sustainability features through both design decisions and materiality



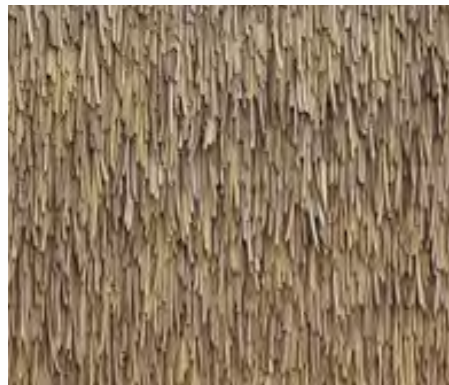
Structure diagram

Exploded axonometry



Material palette

Local and off-the-shelf, easily to replace and maintain



THATCH
covering the corrugated metal
roof



CORRUGATED METAL
roof waterproof layer



WOOD FLOORING
all the learning spaces



CONCRETE
main structure frame



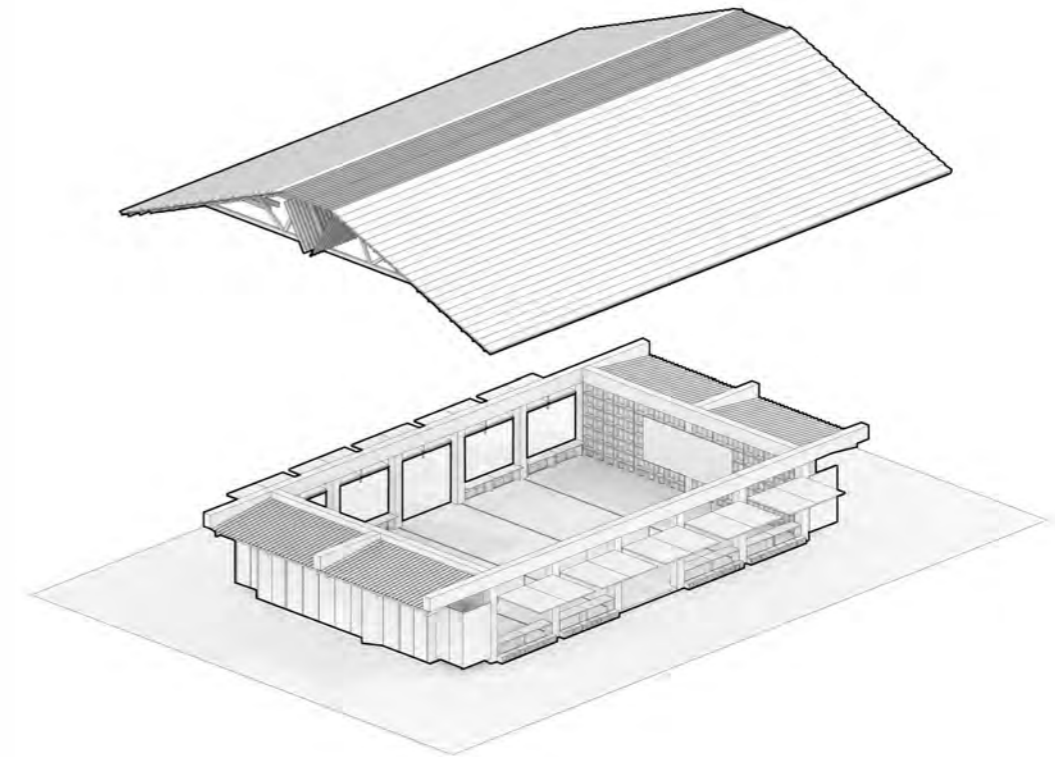
GRAVEL
water permeable outdoor
hardscapes



BAMBOO MATS
partitions, windows and panels

Technical Summary

Building new traditions towards a sustainable future



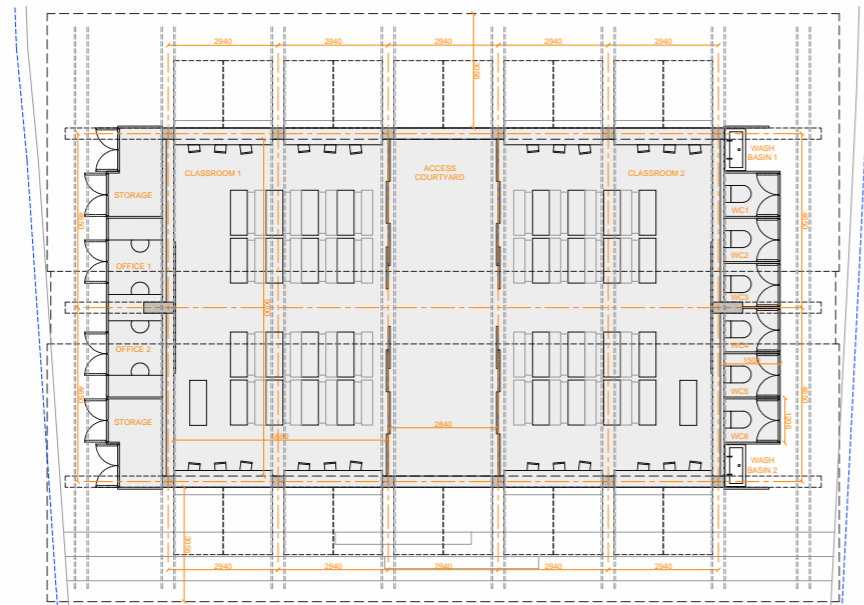
The Thnal Dach School merges vernacular intelligence and local craftsmanship with simple modern techniques, creating a climate-responsive, flexible, and community-oriented space – a sanctuary for children and a shared hub for the entire village.

CONTEXT

The Thnal Dach school in Cambodia is a new building designed. It is placed parallel to the old structure, creating a **protected, open courtyard between the two buildings** for outdoor activities and events. The new school is elevated approximately 2 meters above the sloping ground to remain above floodwater levels and align with the existing school, ensuring level access without steps. The raised concrete pedestal also acts as a foundation and forms a landscaped slope down to the lake, creating a **series of steps and platforms that children naturally use** for play and gathering, making the terrain part of the school experience.

VERNACULAR INSPIRATION

The design draws on the accumulated wisdom of **Cambodian vernacular architecture**, which has long responded to the humid heat, heavy rainfall, and seasonal flooding. Rural pavilions raised on stilts, often open or lightly enclosed, use a steep central ridge roof with wide overhanging eaves for natural shade, rain protection, ventilation, and diffused light. These strategies, developed over centuries with local natural materials, are familiar to the community, easy to source, easy to repair, and resilient in this climate. Our aim is to build on this tradition while introducing complementary contemporary techniques to create a new, locally rooted typology for schools.



STRUCTURE & MATERIALS

The building **combines industrial and local materials** within the limits of local availability and expertise. A simple framework of concrete columns and beams supports wooden or light steel trusses, topped with corrugated metal sheets. Wooden runners, bamboo, and polycarbonate panels form the secondary structure and skylights. This hybrid approach leverages local skills while adding durability and flexibility where needed, ensuring the school can be easily built, maintained, and repaired by the community.

ROOF AS A CLIMATE DEVICE

The roof is the key element of the design. A wide gable with low eaves (2 meters high) creates **shaded, dry outdoor zones** where children can play and gather, while maintaining a friendly scale. At the ridge, we reinterpret the **traditional steep triangular vented roof by inverting it**: a translucent **polycarbonate skylight dips into the building, softly illuminating** the classrooms. Warm air rises towards this high point and escapes through its open ends, **naturally ventilating the interior**. A **layer of local thatch** covers the corrugated metal, preventing overheating and dampening rain noise. Like traditional Cambodian roofs, this simple device regulates light, temperature, and comfort without mechanical systems.

FLEXIBLE LEARNING SPACE

Under the continuous roof, two classrooms flank a covered central courtyard. Internal **partitions can be removed**, turning the entire building into one large, uninterrupted space. This allows communal activities such as indoor markets, assemblies, performances, or adult workshops to take place. Thanks to the **fully openable facade**, this space can work in direct continuity with the schoolyard, creating a large, flexible event area for the whole community. Large windows facing the courtyard and lake fully open to merge indoor and outdoor spaces, allowing natural light, ventilation, and views of the landscape. Even when closed, strategically placed openings and the skylight provide daylight and airflow. Each classroom has standard desks facing the blackboard, while built-in desks along the windows offer quiet spots for individual study and activities overlooking the schoolyard. Outside, low cinderblock benches with shoe storage run beneath the windows. The entire building has a **raised wooden floor**, making it a **clean, safe, and welcoming sanctuary** where children can learn, play, study, or rest freely on the floor surface.

MODULARITY & EXPANSION

Utility spaces are located at the two narrow ends of the building, housing water fountains, toilets, storage, and a small teacher's office. The building's structural and **functional layout is modular and extendable**: more classrooms can be added in series on larger sites while maintaining the same spatial quality and operational flexibility.

Technical Summary

Building new traditions towards a sustainable future



New structures / removals / changes

- 1 Remodeling of the attached classroom
- 2 Demolition of external structures (wc, kitchen, storage)
- 3 Construction of new school building with 2 classrooms, communal space, 6 WCs, storage and teachers' offices
- 4 Incorporating new kitchen, under a new roof.
- 5 Creation of new, large, flat courtyard for play and activities
- 6 Extending and enlarging the attached classroom into a new attached structure, housing 2 classrooms under a new roof.
- 7 Creation of stepped landscape with seating and small gardens toward the river

Technical Summary

Development program before and after



Development program

- A Classrooms
- B Covered outdoor space
- C WC
- D Kitchen
- E Storage
- F Teachers' Offices
- G New school yard



Exterior view

In dialogue with the existing school, creating new spaces for play, learning, and community activities

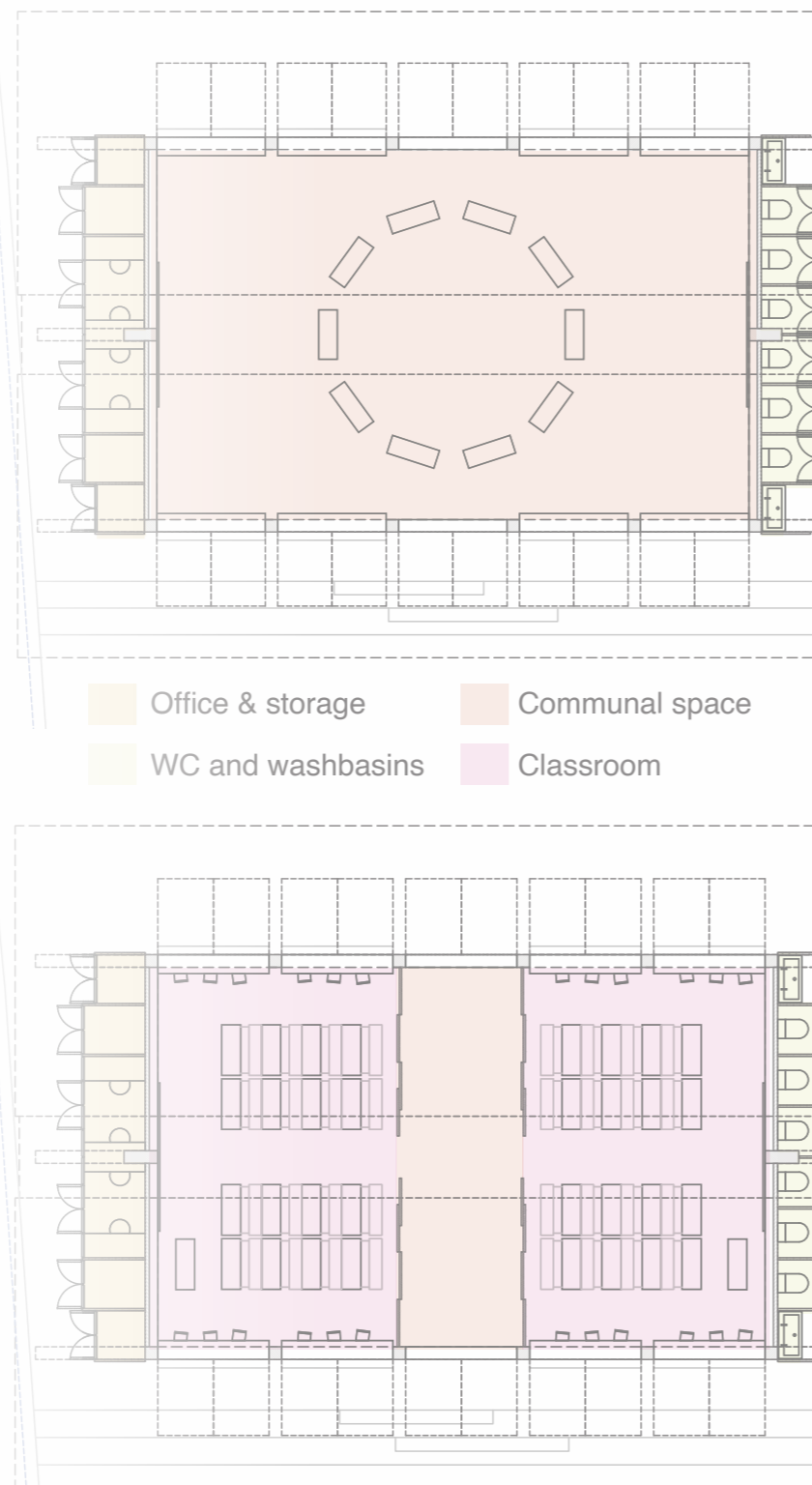


12

BUDGET, WORKING PACKAGES (WBS)

New Thnal Dach Primary School Project Development Working Packages:

- **A new building with 2 New Big Classrooms 9m x 6m** with a roof, fully equipped
- **Covered space and corridor** between classrooms
- **Demolition of existing structures**
- **Supplementary buildings A: 6 new Toilets (WC) and water sanitation facilities** with faucets; side wall protection.
- **Supplementary buildings B:** Teachers Offices, Storage rooms, new kitchen facilities.
- **2 Wall Libraries** in both classrooms enclosed inside
- **Repairing and expansion of unsuitable existing classroom** of the old school building.
- **Earthworks (Embankments) and Retaining Structures (RW)** to host the new school building.
- **Large Play Yard** with outdoor and indoor Sport facilities and leisure activities .
- **Creation of stepped Landscape** with seating and small gardens.



Project Construction Estimation Cost

Total cost est. of 78,500 US Dollars

13

CONTRACTUAL ARRANGEMENTS & CURRENT PROGRESS



Contractual Arrangements

- **IPD (Integrated Project Delivery)** Operations of ELQ Initiative.
- **SDGs:** I) Schools & Education, II) Children, III) Family & Communities, IV) Well-being, V) Zero Hunger, VI) Mental Health Improvement .
- ELQ Initiative and District Authorities **D-B-T (Design- Build and Transfer arrangements) Agreement** .
- School Building Project completion and delivery protocols with **manuals handover**.
- **Under cooperation with District** of Soutr Nikom all permissions and other approvals are of Districts responsibilities.
- District of Soutr Nikom supports ELQ INITIATIVE at all project stages, using their technical and administrative staff, including all relevant permissions and approvals.
- Local Community agreed to assist works including local materials procurement and **providing skilled local staff in approx. 80%** for enhancing local economy.
- ELQ Initiative will issue with Constructor **certificates of skilled employees and labor** and an experience proof document.

Current Progress

- Community application for a new school building completed.
- Feasibility Studies completed.
- Local Authorities Permissions completed.
- Designs completed.
- Minor works of cleaning the area, removing materials in progress.
- Earthworks, RWs and area protection starting soon.

14

FUNDRAISING MATTERS

Fundraising Aim

to cover the budget of the “**New Primary School Building Development Project**” which will lead to a great positive impact to children and local society in Thnal Dach and beyond.

FUNDRAISING IS OPEN NOW



Scan Donate Done



Donate via our Website



thereachingoutproject.org/newschool-fundraising
or Scan the QR code

Cambodian Bank
ABA PAY
Member of **KHQR**



USD



KHR

ELQ (EDUCATIONAL LIFETIME QUOTATION) INITIATIVE

Ways to support

A. Website:

www.thereachingoutproject.org/newschool-fundraising

Choose the amount you want to contribute for the New School Project Development and become very quickly a valuable member of this important project, or scan the QR code on the left page.

Choose among options **in Honor, Memory or for the Birthday** and share your Donation Achievement with your beloved persons or colleagues.

B. Direct account in Greece.

Make your donation for the new school with a direct payment in our Organisation's Account in **NATIONAL BANK OF GREECE (NBG)**

Beneficiary Account IBAN number: **GR3501102260000022601173747**

Beneficiary Bank SWIFT: **ETHNGRAA**

Beneficiary Account Holder Name: **ELQ INITIATIVE**

Do not forget to include your details (Name, Surname, Vat or TIN number) for your receipt.

C. Direct account in Cambodia.

Make your donation for the new school with a direct payment in in our Organisation's Accounts in **ADVANCED BANK OF ASIA LIMITED (ABA)**

Beneficiary Account Number: **014746118**

Beneficiary Name: **ELQ (EDUCATIONAL LIFETIME QUOTATION) INITIATIVE**

Beneficiary Bank SWIFT: **ABAAKHPP**

Beneficiary Account Number: **014746212**

Beneficiary Name: **ELQ (EDUCATIONAL LIFETIME QUOTATION) INITIATIVE**

Beneficiary Bank SWIFT: **ABAAKHPP**

Or Scan the **ABA Bank QR codes** on the left page

Do not forget to include your details (Name, Surname, Vat or TIN number) for your receipt.

D. Fundraising platform <https://whydonate.com/fundraising/thereachingoutproject-newschoolbuilding> designed specifically by our Organisation for the New Primary School Building Project donations. Support us with your donation into the above link and see in firsthand the progress of Fundraising, to meet the target for the new school construction project.

E. For larger scale supporters of school project packages (roof, libraries, play yard, old classroom expansion and renovation etc.), contact us in the below email info@thereachingoutproject.org for more information and guidance.

15

THE REACHING OUT PROJECT INNOVATION OUR IMPACT TO SOCIETY & PEOPLE

| Impact

- I. The New Primary School Building Development Project is **part of ELQ Initiative Educational Plan and Operations in Cambodia.**
- II. It is our mission and vision **to act on the field of Cambodia directly and provide the maximum possible support to all children**, get the Education they need to become better individuals and be useful to their society.
- III. **A milestone, a breakthrough for Cambodia and Education improvement.**
- IV. **The Reaching out Project thinks Global and acts Local.**
- V. We support all children **in their own environment** under sustainable growth, aiming a continuous schooling for all.
- VI. **The Reaching out Project remains focus of establishing and implement innovatory programs and projects** that will gain to children a better life.
- VII. **Education is a fundamental right for any child.**

| By Donating

you do not just help to build a school, **but**

- **you** live the impact your actions have to these children
- **you** give them a real educational chance to improve their lives
- **you** enrich your life and feel the joy of giving
- **you** can reach out to those who need it most



Children in School

Innovation | Creativity | Sustainability | Collectivity

by
The Reaching Out Project
ELQ Initiative

