



**WANDUSOA
ECOLOGICAL
LEARNING CENTRE**



WANDUSOA ECOLOGICAL LEARNING CENTRE

Rooted in regenerative agriculture, the initiative empowers local youth and farmers, especially women, through sustainable farming, education, and the promotion of resilient livelihoods and food security.

JOURNEYMAN INTERNATIONAL



Author and lead designer:

Cedric Delbeke:

Volunteer Designer

Journeyman International

+32495389208

cedric@journeymaninternational.org

Collaborators

Journeyman international - Joanna Nsenga as Senior Project coordinator

joanna@journeymaninternational.org

Journeyman international - Dian as Senior Project coordinator

dian@journeymaninternational.org

Wandusoa Organic Cameroon - Mafah Cornelius Kuta as Founder

Kuta2022@iiseconnect.org



Cameroon faces a silent crisis: over 75% of its arable land is degraded, threatening food security and livelihoods for the 80% of the population that depends on agriculture. As soil health collapses, smallholder farmers, especially women, struggle to sustain their communities.

The Wandusoa Ecological Learning Center offers a regenerative solution. Rooted in Ngoumu, it equips farmers and youth with practical skills in agroforestry, composting, and soil restoration, empowering them to rebuild fertility, increase resilience, and revive rural economies.

Beyond training, Wandusoa strengthens cooperatives, promotes seed-sharing networks, and gathers data to drive national policy change. Women are at the heart of this mission, gaining tools to secure food sovereignty for their families and communities.

By aligning with the UN Sustainable Development Goals, Wandusoa transforms ecological crisis into regeneration, creating a scalable model for restoring land, empowering people, and building a sustainable future for Cameroon and beyond.





Wandusoa is a regenerative agriculture nonprofit near Ngoumu, Cameroon, empowering marginalized youth and smallholder farmers, especially women, through training in regenerative farming and business skills. Its mission is to restore degraded soils, strengthen rural economies, and advance food sovereignty across Central Africa.

The Wandusoa Ecological Learning Center will serve as a hub for agroecology training, research, and community empowerment, blending Indigenous knowledge with modern techniques through a three-year, locally driven construction plan starting in June 2026.

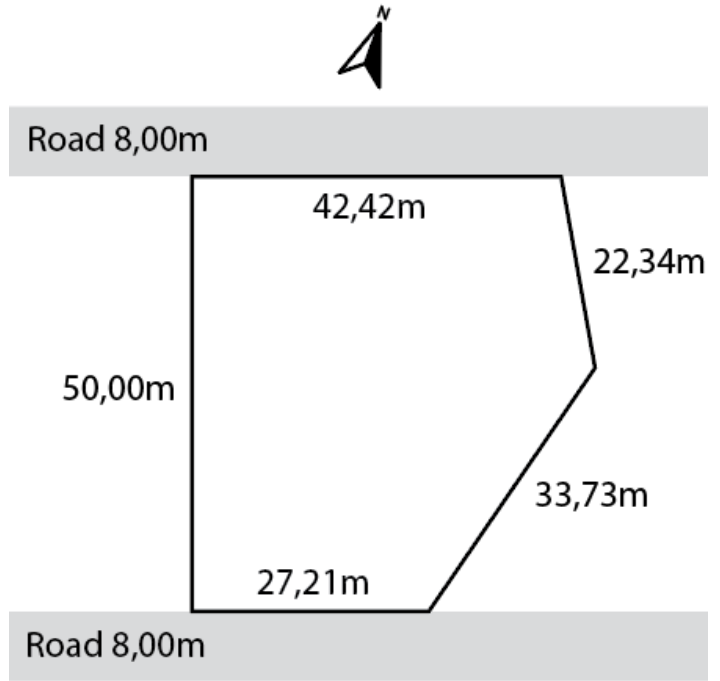
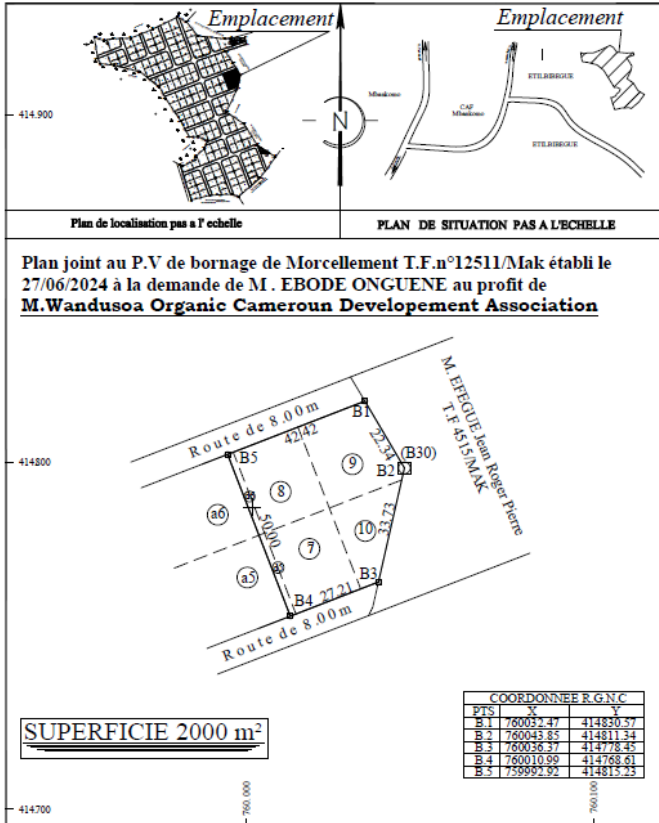
Phase 1 (June–Dec 2026): Core infrastructure: training hall, classrooms, kitchen, tool library, water, and compost systems (~\$120,000).

Phase 2 (Jan–June 2027): Expansion: dormitories, innovation center, workshops, and solar systems (~\$180,000).

Phase 3 (July 2027–Dec 2028): Completion: administrative spaces, security, and restoration of 50 hectares (~\$200,000).

Together, these phases will establish a lasting space for learning, community, and ecological resilience.

SITE



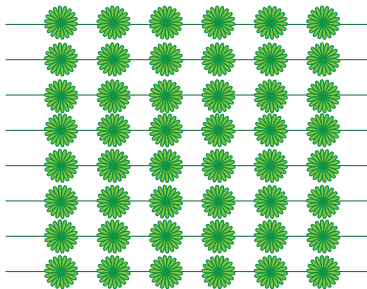
SITE PICTURES



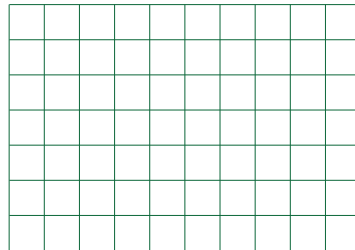
CONCEPT



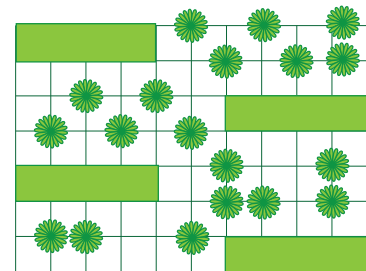
Agriculture fields



Grid 2,5m x 2,5m



Wandusoa buildings - Horizontal focus





PROGRAM

2500m² across 8 structures (single-story for accessibility, with potential mezzanines)

PHASE 1: The Functional Core

Regenerative Training Hub (600m²)

- Classroom (120m²): Modular space for 50+ farmers, with movable partitions
- Demonstration Kitchen (60m²):
- Tool Library (40m²):
- Open-Air Gathering Space (200m²): Covered patio for ceremonies/meals

420m²

PHASE 2 Expansion and Living area

Dormitory Block (400m²)

- Sleeping Quarters (6×25m² rooms): Bunk-style for 4-6 trainees each
- Bathing Facilities (50m²):
- Laundry Area (30m²):

230m²

Agricultural Innovation Center (500m²)

- Seed Bank (80m²)
- Soil Lab (60m²)
- Workshop (100m²)
- Cold Storage (60m²)

300m²

Ancillary Structures

- Compost Toilet Block (50m²): 8 stalls with urine diversion
- Solar Pump House (30m²):
- Storage Barns (2×200m²):

480m²

PHASE 3 Finishing the Face

Admin & Visitor Center (300m²)

- Monitoring Office (50m²)
- Cultural Gallery (80m²)
- Staff Housing (2×40m² units)

290m²

Do we need?

Office space - Not specified
Administration - Not specified
Entrance building
Gathering hall - YES
Amphitheatre - YES
daycare - Not specified

PROGRAM REDUCTION PROPOSAL

PHASE 1: The Functional Core

275m² without covered pathio and amphitheatre

Regenerative Training Hub

- Classroom (120 -> 100m²): Modular space for 50+ farmers, with movable partitions
- Demonstration Kitchen (60m² -> 25m²):
- Tool Library (40m² -> 25m²): -> Storage incorporated in classrooms (25m²)
- Open-Air Gathering Space (200m²): Covered patio for ceremonies/meals -> will not precisely be this but left over spaces will make sure to be usable for these gatherings?
- Multifunctional hall 125m²
- Amphitheatre as an extension of the multifunctional hall

PHASE 2 Expansion and Living area

200m²

Dormitory Block

- Sleeping Quarters (6x25m² rooms): Bunk-style for 4-6 trainees each
- Bathing Facilities -> Incorporated into the rooms
- Laundry Area: outside, free to use space as you see fit

Agricultural Innovation Center

- Seed Bank -> potentially a seedbank wall in multifunctional hall
- Soil Lab (60m² -> 25m²)
- Workshop -> part of Multifunctional hall if you'd like
- Cold Storage (60m²)

Ancillary Structures

- Compost Toilet Block (50m² -> 25m²): 8 stalls with urine diversion
- Solar Pump House (30m² -> 25m²):
- Storage Barns (2x200m²): dont fit the plot in any case - better for if they get more land

PHASE 3 Finishing the Face

80m²

Admin & Visitor Center

- Monitoring Office (50m² -> 25m²)
- Cultural Gallery (80m² -> 30m²)
- Staff Housing (2x40m² units -> 2x25m² Like other dormitories)

Do we need?

Office space - Not specified

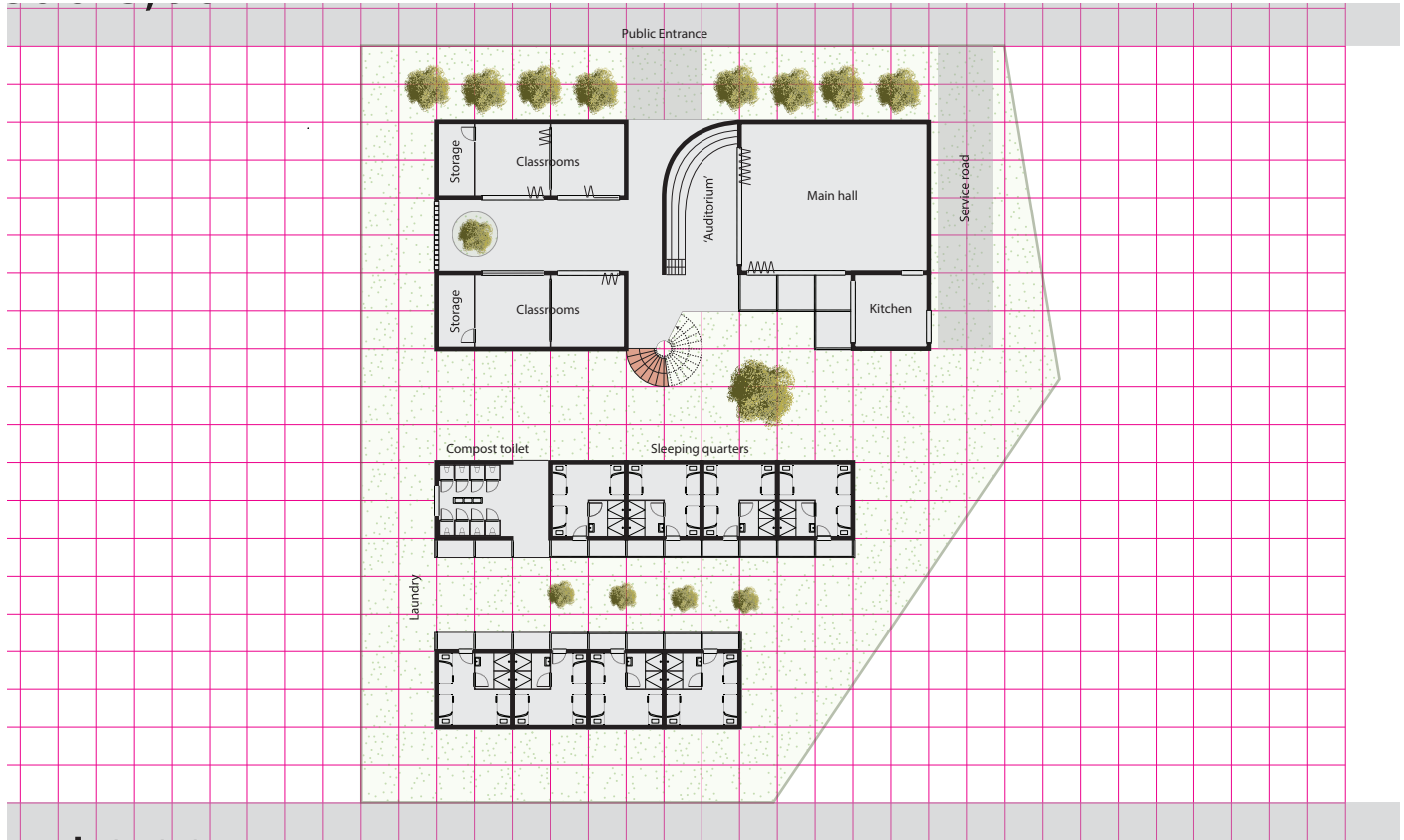
Administration - Not specified

daycare - Not specified

TOTAL: 550m² but more space will be covered patio so total built will be larger

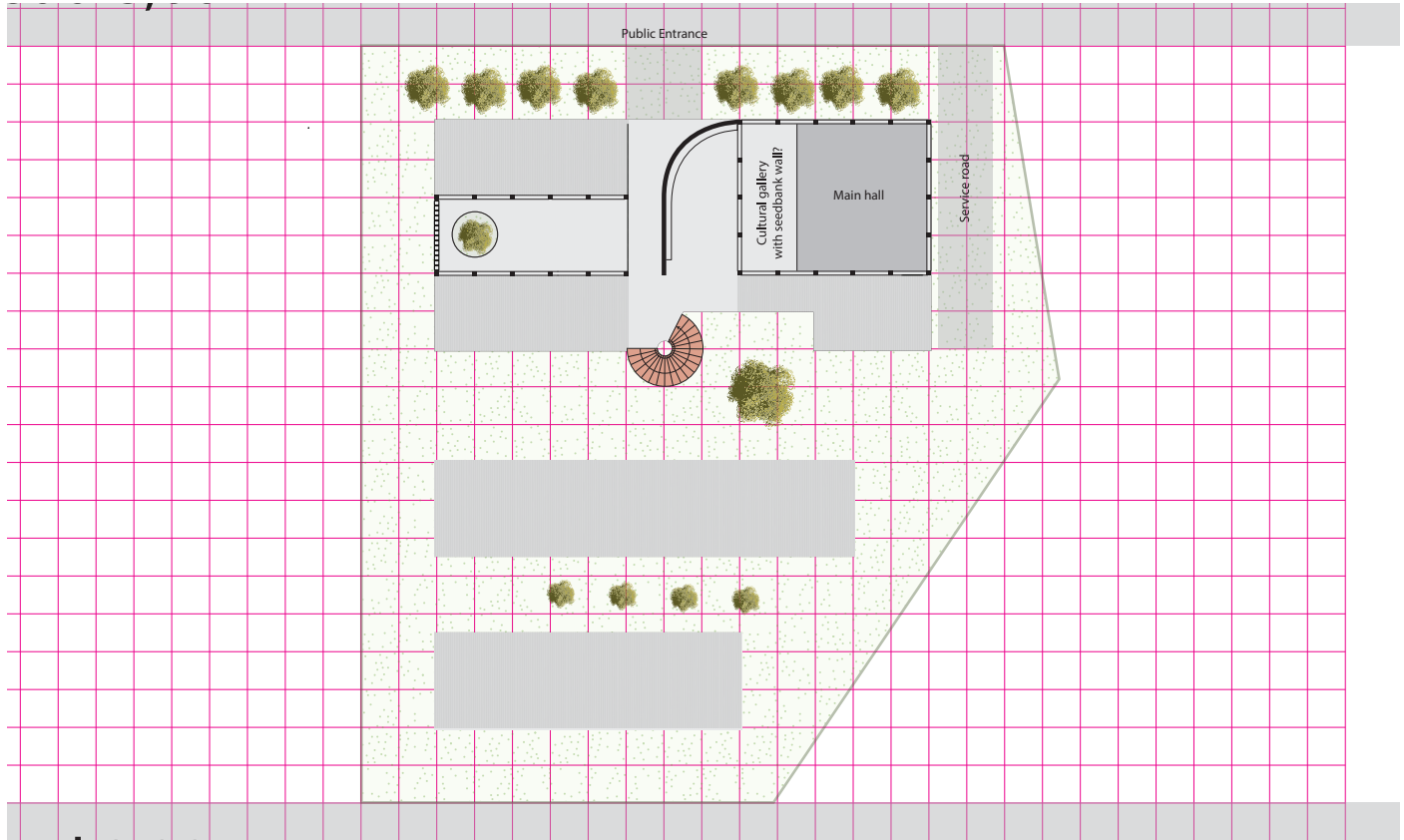
THIRD DRAFT

GROUND FLOOR



THIRD DRAFT

FIRST FLOOR



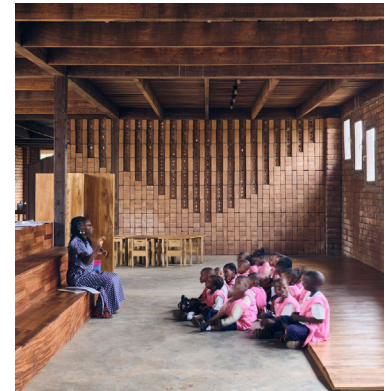
THIRD DRAFT

VISUALISATION CLASSROOMS



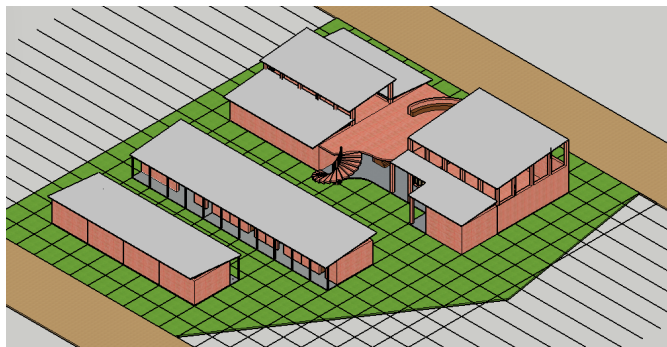
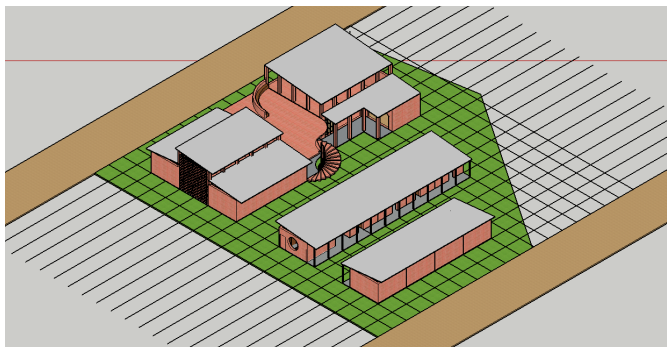
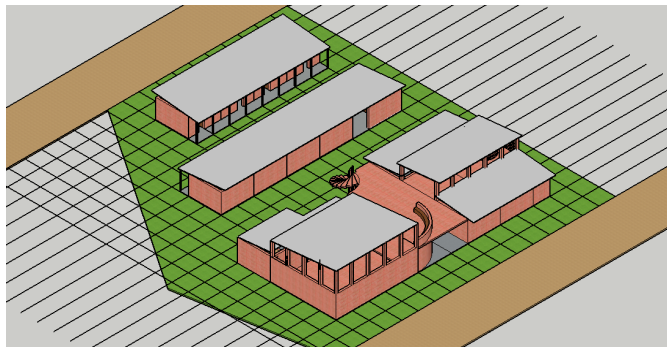
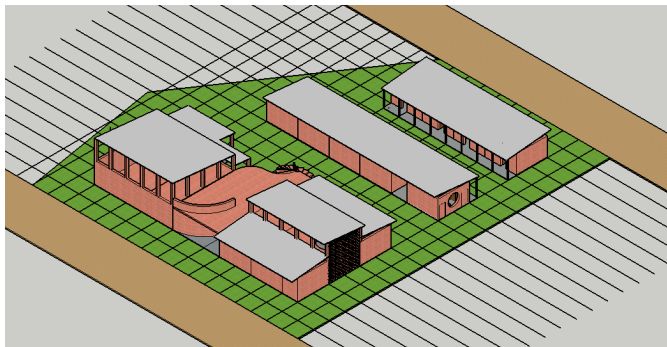
THIRD DRAFT

REFERENCES TO GIVE AN IDEA



THIRD DRAFT

3D DRAFT



POTENTIAL ARTISTS?

<https://www.artmajeur.com/en/artists/painters?country=CM>



Awe Haiwe

📍 Cameroon



Lambert Ebode Etogo

📍 Cameroon



Charles Yemming

📍 Cameroon

