

juanfe

Desarrollo social sostenible

**EVIDENCE AND OUTCOMES IN REDUCING
ADOLESCENT PREGNANCY AND ADVANCING YOUTH
SOCIOECONOMIC INCLUSION IN LATIN AMERICA**



About us

Juanfe Foundation is a non-profit organization with 24 years of experience in designing and executing social interventions aimed at **improving the living conditions of women, children, and adolescents in vulnerable situations** in Latin America.

Our **360° Social Development Model** is currently being implemented in **Colombia, Chile, and Panama**, and it constitutes a comprehensive strategy to **break cycles of poverty by integrating sexual and reproductive health, psychosocial support, education, and employability.**

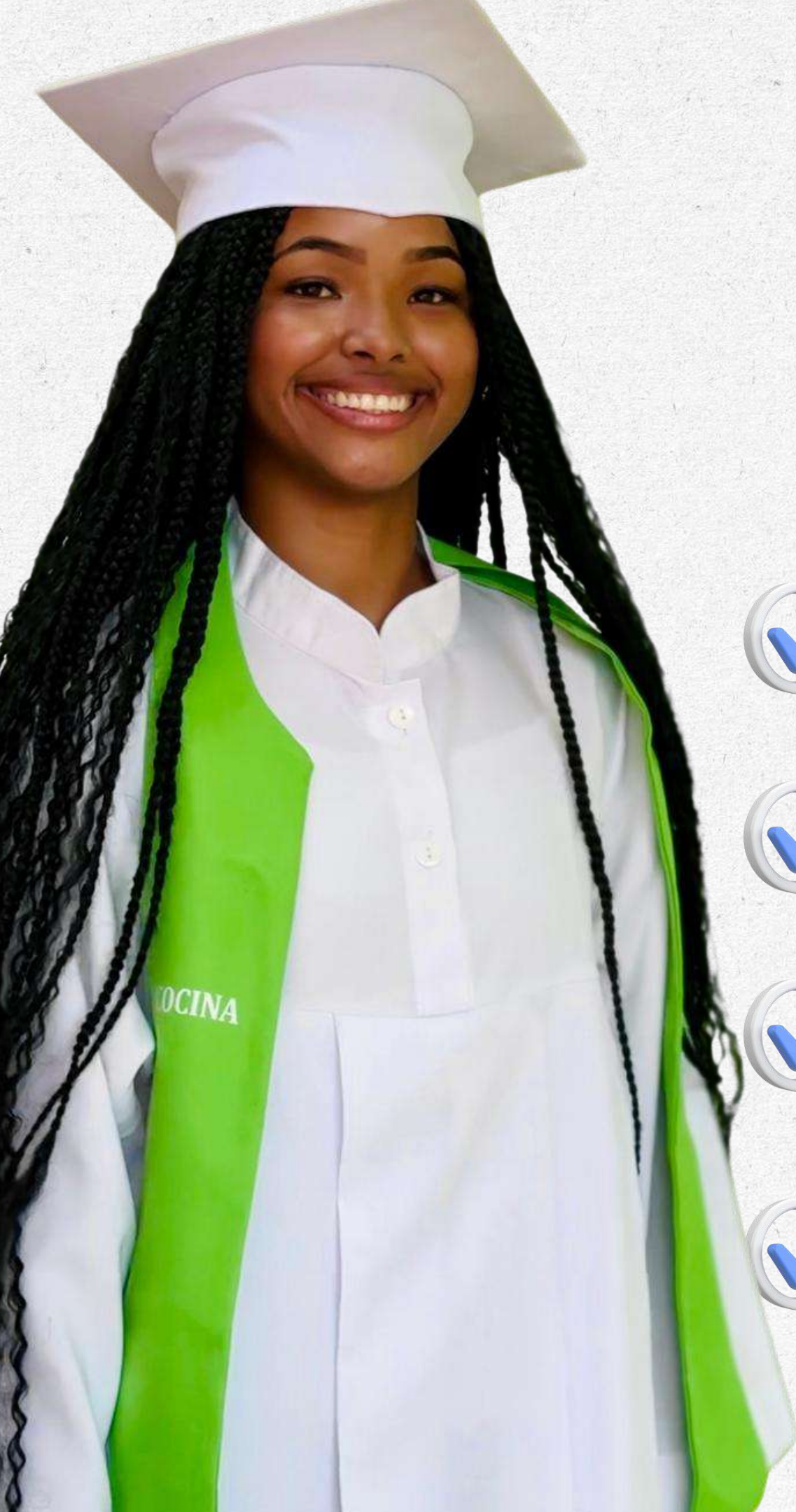
By implementing the 360° Model, **we have reached 313,207 beneficiaries**, generating verifiable results in **employment inclusion, income growth, and local economic development**, along with a sustained decrease in subsequent teenage pregnancies.

juanfe
Desarrollo social sostenible

**We redefine life by
restoring dignity
and value to
unlock each
participant's full
potential.**



juanfe
Desarrollo social sostenible



Validated outcomes

AFTER EVALUATING, SCALING, AND VERIFYING **THE IMPACT OF THE 360° MODEL**, WE EXPANDED OUR COVERAGE TO **BENEFIT MIGRANT WOMEN AND THEIR FAMILIES**, IMPACTING 7,711 MIGRANTS.



13.14

Teen mothers and their children with improved living conditions thanks to the 360° Model.



2.63

Children aged 0 to 24 months served at the Comprehensive Child Development Center in Cartagena since 2011, with zero reported accidents.



25.81

Family members, benefited through our programs.



69.31

Young people, community leaders, and educators have received guidance on sexual and reproductive rights and health, with a reconciliatory and gender-focused approach, during our social mobilizations.

**We transform the world,
one woman at a time.**

juanfe
Desarrollo social sostenible



Key Achievements



Replication and scalability:

360° model implemented in Chile, Panama, Cartagena, Medellín, and Urabá.



Digital platform:

270,000 unique users on Women Working for the World.



Sustainability:

LEED Platinum-certified headquarters in Cartagena, with solar energy and comprehensive water recycling.



Acknowledgment:

Among the most reputable and well-governed NGOs in Colombia (Merco 2018)



Impact on Public Policy:

Promotion of the #GirlsNotBrides Law and other reforms in defense of women and children.



International Recognitions:



202

World of Difference Award – The International Alliance for Women (TIAW).



202

Great Place to Work – best places to work in Colombia.



5
202

LEED Platinum certification and validation by CAF America.



201

2nd place in Merco Responsibility and Corporate Governance.



3
202

Fundación MAPFRE Award for Social Innovation [Spain].

8

1



Many young Latin American women have navigated complex life experiences in environments where violence, lack of protection, inequality, and exclusion have left deep marks on their emotional well-being.

Adolescent pregnancy:

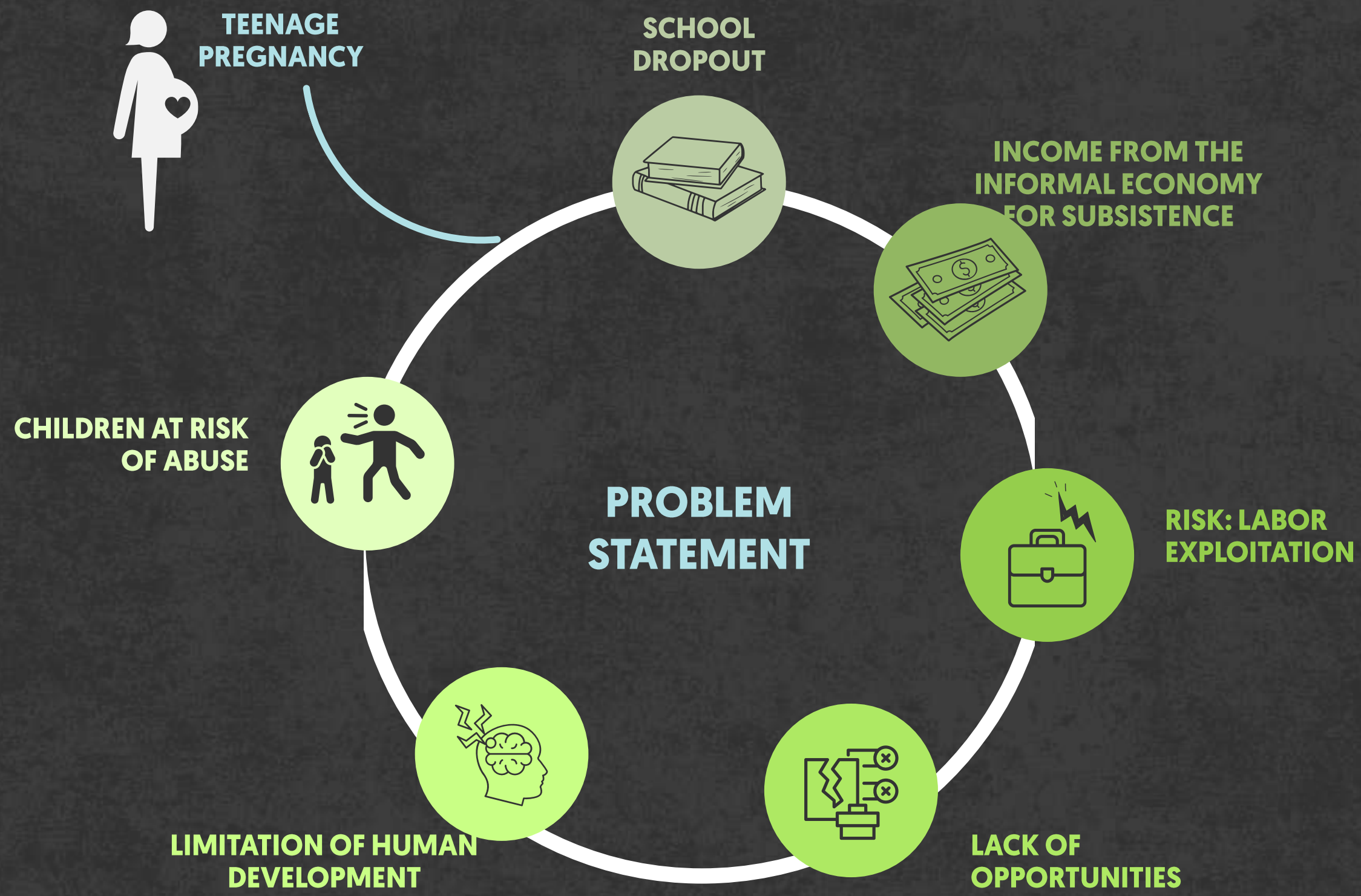
A structural determinant of poverty and exclusion in Latin America.

In contexts of poverty, women, girls, and adolescents face higher levels of structural vulnerability, increasing their exposure to early pregnancies and limiting development opportunities.

In Latin America, **teenage pregnancy remains one of the primary determinants of poverty**, social exclusion, and gender inequality, directly impacting productivity and human capital.

This phenomenon **disrupts educational paths, restricts formal labor market integration, and perpetuates intergenerational cycles of poverty** that are difficult to reverse.





**PERMANENT RISK OF
EARLY-AGE PREGNANCY
RECURRENCE**



EXTREME POVERTY

After the second pregnancy,
the likelihood of joining the
development pyramid is 0%.

Overview of Poverty and Teenage Pregnancy in Colombia



Colombia



Total population

52,9 millones

32 out of **100** Individuals **live in poverty**

12 out of **100** individuals **live in Extreme poverty**



Colombia

20
25

15% of births were to teenage mothers in 2024.

Colombia ranks among the highest countries in the OECD and partner economies in adolescent pregnancy rates.

In the past five years, adolescent pregnancy has cost Colombia

More than 8 billion USD

in public spending on maternal health care and early childhood services.



Departments with the highest incidence of teenage pregnancy

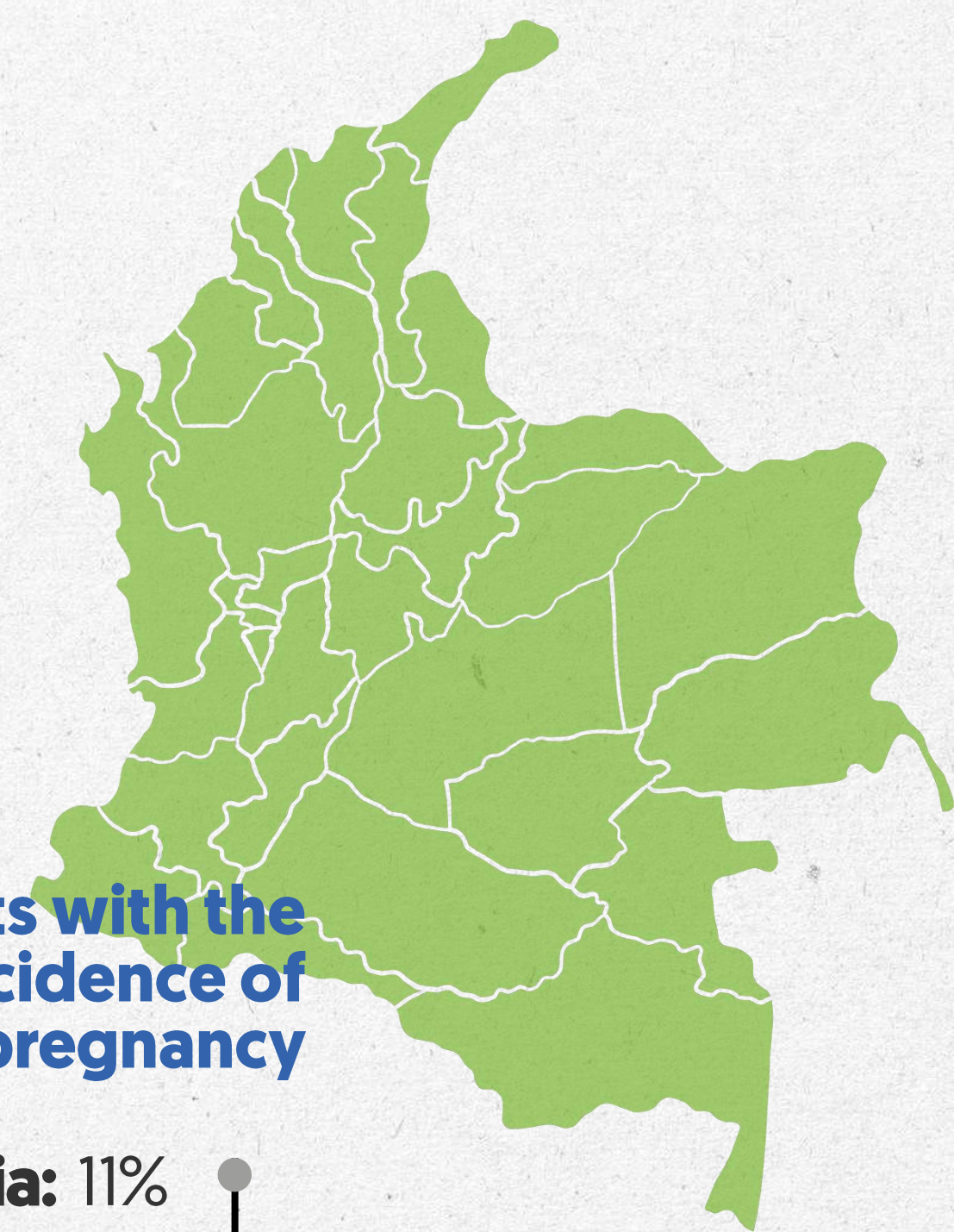
Antioquia: 11%

Bolívar: 7%

Valle del Cauca: 6%

Magdalena:

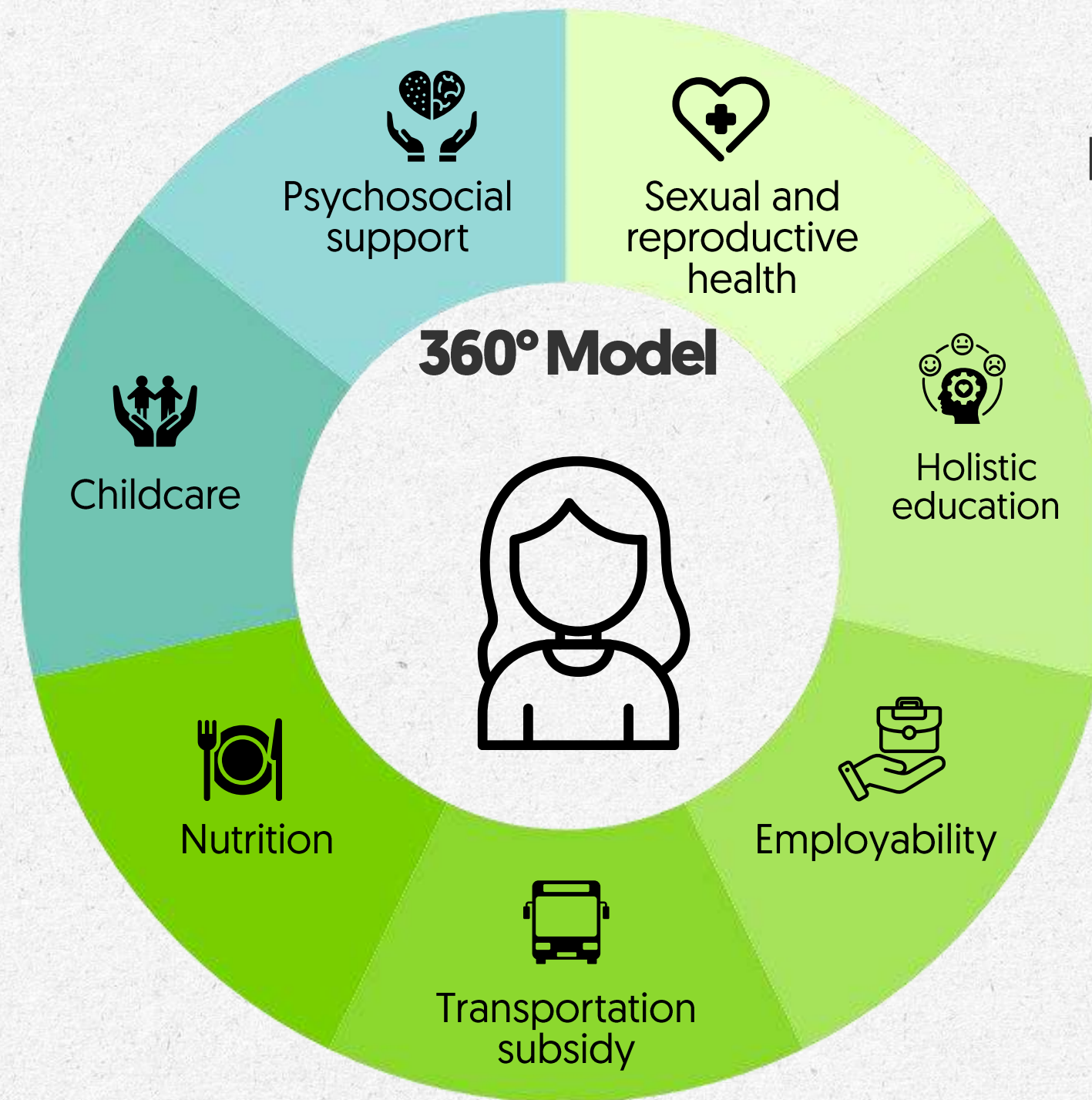
5%



The 360° Model:

An evidence-based comprehensive intervention.

In light of the high rates of teenage pregnancy and youth unemployment, the Juanfe Foundation developed the 360° Model, a validated comprehensive intervention that addresses the structural causes of youth poverty.



Economic autonomy breaking the cycle of poverty



The 360° model contributes to 9 of the 17 SDGs.

1 NO POVERTY



2 ZERO HUNGER



3 GOOD HEALTH AND WELL-BEING



4 QUALITY EDUCATION



5 GENDER EQUALITY



8 DECENT WORK AND ECONOMIC GROWTH



10 REDUCED INEQUALITIES



11 SUSTAINABLE CITIES AND COMMUNITIES



17 PARTNERSHIPS FOR THE GOALS



Measurable and Verifiable Outcomes of the 360° Model

Work-related income

Result: +100%

Young women double their income one year after graduation.



Employability

Result: +79%

Higher likelihood of employment compared to non-intervened women.



School attendance

Result: +200%

Increase in school attendance and educational continuity.



Prevention of Subsequent Pregnancy

Result: +99.7%

7% of mothers do not experience a second pregnancy within 6–7 years.



Internal Rate of Return (IRR)

Result: +11.5%

Every dollar invested generates sustainable returns.

The **evidence confirms** that the **360° Model** is an **effective, cost-effective, and scalable intervention** capable of generating **economic development and reducing intergenerational poverty**.



We support our courageous women in building their life projects through a model that enables comprehensive empowerment and economic autonomy.

juanfe
Desarrollo social sostenible

Impact with Evidence: Results that Shift the Country's Statistics

In 2024, there were **66,686 births to adolescent mothers**: 3,159 from mothers aged 10 to 14, and 63,527 from those aged 15 to 19.



Only **30%** of young mothers access higher education.



From May to July 2025, the **unemployment rate** in Colombia was **11.2% for women** and 7.0% for men.



24 out of 100 individuals aged 15 to 19 are NEETs in the country.



As of August 2025, there have been **22,471 reported suicide attempts** in Colombia, with 14,483 involving women.



"99.7% of the young women participating in the 360° Model **avoid a second pregnancy after the intervention.**"



We have **certified 2,197 teenage mothers in technical labor training in Cartagena and Medellín**, achieving 79% higher employability compared to non-beneficiary youth.



In the last three years alone, in Cartagena and Medellín, **1,490 teenage mothers have obtained their first formal employment**. They earn between 1 and 2 statutory minimum monthly legal wages.



After a year and a half of intervention, our most recent figures are compelling: **a reduction in suicidal ideation/attempts from 49% to 0% in Cartagena and from 33% to 5% in Medellín.**

The Juanfe Foundation demonstrates that data-driven social investment generates sustainable results: **99.7% avoid a second pregnancy, 79% increase their employability**, and suicide attempts are reduced by up to **49%** in intervention areas.



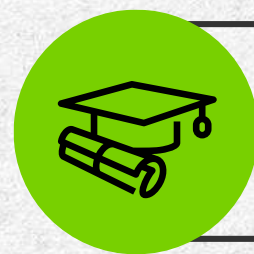
**Proven
replicability:**

Panamá



In 2015, Voces Vitales Foundation launched the Las Claras program in Panama City, the first replicated site of our 360° Model, adapted to local needs.

The experience in Panama confirms that the Juanfe 360° model can transform lives and communities beyond Colombia.



15

Teen mothers graduating from the Las Claras center.



799

prevention of subsequent pregnancy

%



100

of school-age children, are in the regular educational system

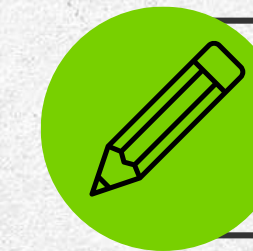
%



45

of the graduates with formal employment

%



20

of the graduates are pursuing higher education

%


Chile




Chile is the second country in Latin America to replicate the Juanfe 360° Model.

In 2017, Fundación SoyMás adopted the 360° Model. Today it operates in three locations (La Pintana, Renca, and the inauguration in Maipú), in partnership with INACAP and Duoc UC, demonstrating the sustainability and scalability of the 360° approach.

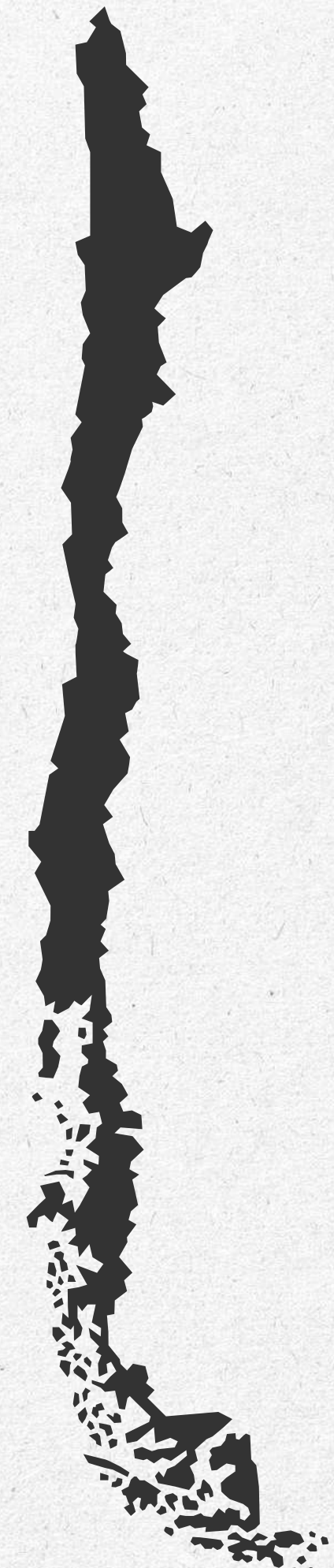
Thanks to this partnership, we have impacted over **1,000** teenage mothers, as well as their children and families in Chile.

 **1.47** Mothers, children, and girls impacted since 2017

 **91** Graduates supported in employability and entrepreneurship

 **430** Children served in the Mother–Baby Bonding Room at the La Pintada Center

0



They are life stories. Discover our **360° Model.**



[CLICK HERE](#)



[CLICK HERE](#)



The future of social development depends on interventions that combine evidence and sustainability.

Let's work together!



Sources

[World Development Indicators \(WDI\) — Banco Mundial / DataBank](#)

[UNICEF Data \(Data Warehouse / UNICEF Open Data\)](#)

[CEPAL — Panorama Social de América Latina y el Caribe 2024](#)

[Informe “Best practices in social policy focused on children and adolescents” — referencia a datos del MEPyD \(2024\)](#)

[Informe de Resultados UNICEF República Dominicana 2023](#)

[UNFPA, UNICEF y OPS \(2023\) — “América Latina es la segunda región del mundo con mayor fecundidad adolescente”](#)

[OPS, UNICEF, UNFPA — Informe “No hay tiempo que perder” \(Situación del embarazo adolescente en América Latina y el Caribe, 2023\)](#)

[DANE \(Colombia\) — Estadísticas Vitales 2024](#)

[Oficina Nacional de Estadística \(ONE RD\) — Anuario de Estadísticas Vitales 2024](#)

[Banco Mundial — Tasa de fecundidad \(nacimientos por mujer\), República Dominicana](#)

[Banco Mundial — Gender Scorecard: República Dominicana \(incluye datos de fecundidad adolescente\)](#)

[ONE RD — Infografía Embarazos en Adolescentes República Dominicana 2025 — Segundo Trimestre](#)

[UNFPA / MILENA República Dominicana \(2018\) — Consecuencias socioeconómicas del embarazo adolescente](#)

[DANE — Mercado laboral / Empleo y desempleo](#)

[Boletines estadísticos de suicidio \(Medicina Legal Colombia\)](#)

[Boletín Brecha de Género en la Tasa de Ocupación — ONE RD](#)

[Publicación “Metodología para la medición de la población joven que ni trabaja ni estudia o realiza alguna capacitación \(NINI\)” — ONE RD \[versión en línea\]](#)