

TWAM

Tools with a Mission

Our News

February 2026

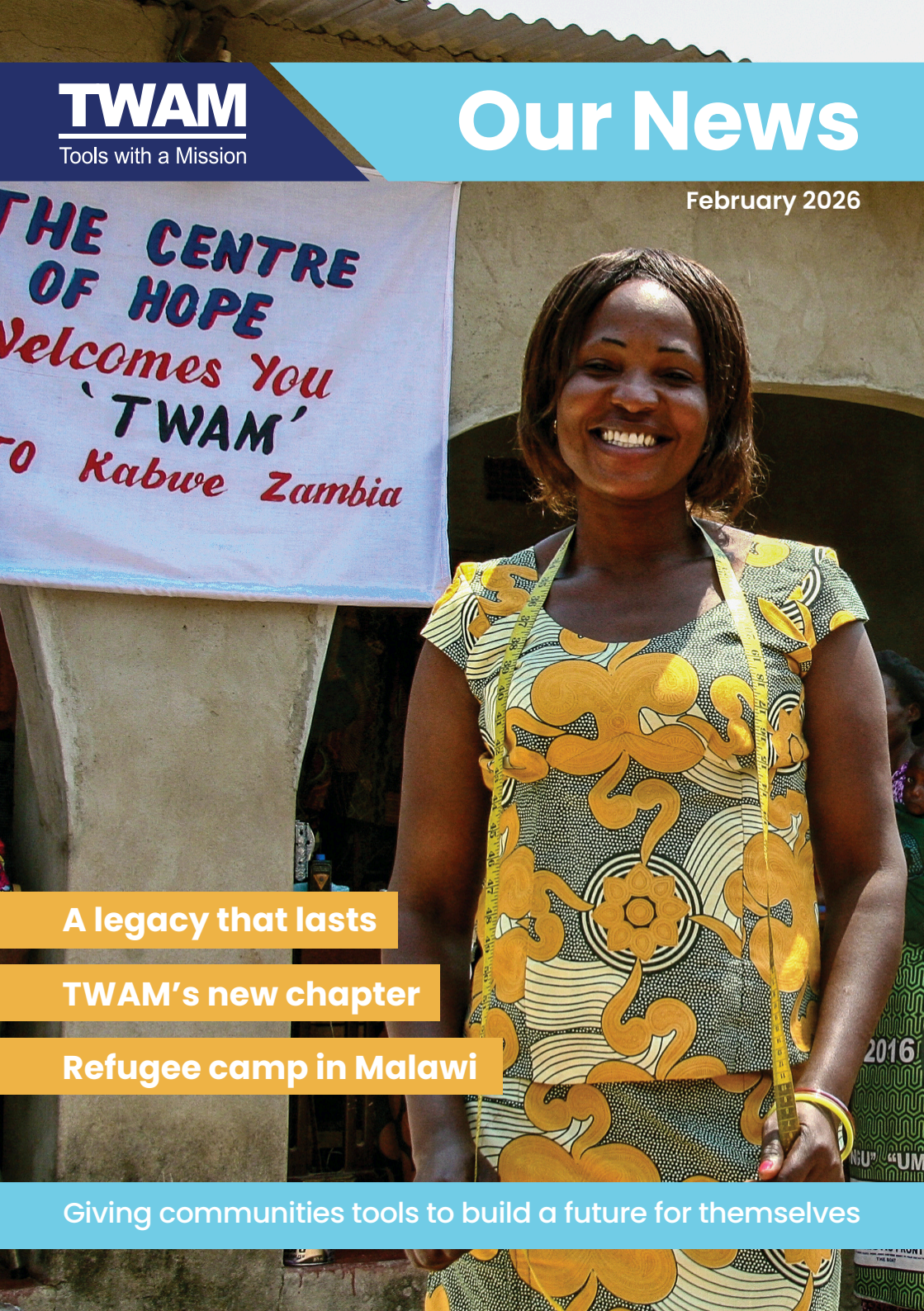
THE CENTRE
OF HOPE
Welcomes You
'TWAM'
to Kabwe Zambia

A legacy that lasts

TWAM's new chapter

Refugee camp in Malawi

Giving communities tools to build a future for themselves



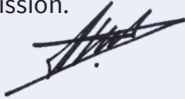
Welcome to TWAM News

Dear Friends

It is a delight to thank you for all your support in 2025. It was a great year for TWAM, one where we reached over 500 communities - including in Burundi and Tanzania!

We are now excited to share with you the evolution of our development approach in Africa, ensuring a greater impact. You can find out more on p6. On p10, you can read about the changes to our team, and the appointment of our new Chief Financial Officer, Diane. Finally, we are excited to announce the first shipment of tools to Rwanda in January.

With an exciting year ahead, 2026 looks like a promising year for our mission.



John Noble

Chief Executive Officer

"All the fruits [of your work] will be holy, an offering of praise to the Lord."
Leviticus 19:24



In November, we were delighted to welcome Jack Abbott, MP for Ipswich (pictured on right), to help send off TWAM's first shipment in 2025 to Zimbabwe.

Tools with a Mission

2 Bailey Close, Hadleigh Road Industrial Estate, Ipswich IP2 0UD
6 Paynes Lane, Rugby CV21 2UH

Registered charity in England and Wales no: 1104903 | Company no: 5114575
VAT Registration no: 347292286



twam.uk
01473 210220
post@twam.uk



About us

We are a Christian charity that collects donated usable tools, refurbishes them, sorts them into trade kits and sends them to the developing world for livelihood creation.

We support local people, meeting local needs with life-transforming skills training projects. We supply tools to equip training centres and to give to trainees when they graduate. With this support we see long-term sustainable livelihoods created.

Thanks to over 500 volunteers in the UK and your support, we will continue to transform lives and communities.

Financial support



We keep our costs very low, but we still need a lot of support. We value all gifts, whether one-off or regular. You can donate online, send donations to our Ipswich postal address, or request a Standing Order and/or Gift Aid form.

Time to donate?



We are always looking for more volunteers to help in our centres. At present we particularly need volunteers in our refurbishment centres. Please visit twam.uk/volunteer to browse our available roles or call us on 01473 210220.

Tools to donate?



To find your nearest collection centre, or to contact a local collector, have a look at our website or call our Ipswich office.

Prayer support



TWAM depends on prayer. If you don't currently receive our quarterly prayer diary and would like to, please contact our Ipswich office.



Thank you Bryan!

Bryan Orchard was our Company Secretary from 2012 until he ended his tenure in December 2025. We would like to take this opportunity to thank him for his unfailing support of and dedication to TWAM.

Bryan says: "It has been an honour to serve the Lord through this fantastic charity. I have been a tool collector and speaker and, in 2008, was invited to join the Board. To see how God has blessed TWAM in every way has been fantastic, especially the receipt of a legacy at the exact moment that funds were somewhat tight. I would like to thank the Board for their support over the years and wish TWAM the very best for the future in these exciting times."

Could you join us?

TWAM is a Christian charity that welcomes people of all faiths and none. If you would like to find out more, please get in touch on 01473 210220. More details can be found at twam.uk/volunteer.

A legacy that lasts

TWAM only exists through the generosity of others. Legacies are so important because they have a lasting impact on our work.

Two-thirds of our funding comes via donations

Every donation we receive - no matter how large or small - is welcomed with humility and gratitude. Our supporters never fail to amaze us with their response to our appeals and their support of our mission.

Gifts in Wills give us an opportunity to have a substantial and lasting impact. In 2025, for example, a generous legacy enabled us to invest in operations and secure our presence in Zimbabwe and Malawi, ensuring we were able to send over 20,000 tools in 2025. And to shine a spotlight on exactly what a legacy could do, allow us to tell you the story of Maria.

At the Kimisala Community Centre in Zambia, a determined woman is breaking barriers and shaping a new future, thanks to the power of TWAM tools. Maria joined the carpentry program at Kimisala in February 2025, the only woman amongst six students. Despite the challenges of



being a woman in a traditionally masculine career, Maria's determination shines through. "I'm very happy to be an up-and-coming carpenter", she says. "It's not easy being a lady, but I want to do it, so I put in all the effort. I will teach my children this skill and encourage my fellow ladies to be active, to work wherever and do whatever comes in terms of skills. What a man can do, I can also do."

Maria's journey is testament to the power of opportunity

The Solwezi Municipal Council, our long-term partner, runs Kimisala and three other centres, offering skills training to hundreds of students. With 30 students in tailoring and six in carpentry, the centre has become a beacon of hope for many, offering people like Maria the chance to learn and grow in meaningful ways.

The generosity of our supporters, including those who leave gifts in Wills, has put Maria on a path to starting her own workshop. She dreams of becoming an independent carpenter and using her skills to support her family.

Maria's story is one of courage, perseverance, and the belief that skills can change lives. With the right tools and the support of a community, she's proving that with hard work and determination anything is possible. We're incredibly grateful to our givers who make stories like Maria's possible, helping to build brighter futures, one tool at a time.

“ I heard about this programme and I said I had to do it. This knowledge will help me more than I can say. ”

It is remarkably easy to give a legacy to TWAM, and secure a future for years to come for Maria and hundreds like her. To leave a gift to TWAM in your Will, all you need to do is to call your solicitor with our charity's name, address, and charity number. It can be done in minutes.

Together, we can ensure that your gift lasts for generations!

The Solwezi Municipal Council

The Council has been a TWAM partner since 2018. As well as purpose built training centres in Kimisala and Kyalalankuba, it has a carpentry workshop - where Maria is training. Other vocational and business courses are on offer, as well as key life skills, such as village banking.

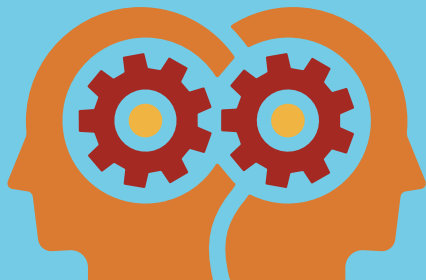
Priorities for this grassroots community skills movement are early education for children and vocational training for adults.

Communities in this area receive some government money and certain subsidies from mining companies but it's simply not enough. That's why their partnership with TWAM is so important. Their work is supported by community development officers who monitor results and report back to TWAM regularly. They tell us of the significant impact the Council is having, not only on an individual level but through skill sharing across the entire district.



A new phase for TWAM

Building stronger partnerships for lasting impact.



At Tools with a Mission we've always known that a simple toolkit can change lives. Over the years we've seen countless stories of impact: families starting new businesses, communities lifting each other up, and hope being restored where opportunities were scarce.

As we look to the future, we're excited to share that TWAM is entering a new phase in how we deliver that impact. We are refining our approach to place even greater emphasis on partnership, accountability, and holistic support.

Why the change?

Development is most effective when it is locally led and deeply rooted in community life. Over the past year, we've been listening, learning, and exploring new ways to ensure our support not only reaches those who need it most, but also creates long-term, sustainable change.

That's why we are transitioning from open applications to a Primary Partner model, where our partners will identify and work with communities in need.

Groups consistently tell us they need more: support with running their groups well; saving and managing money; improving product design and quality; and building entrepreneurship skills, amongst others. This new phase is our way of walking more closely with people, investing time as well as tools.

The road ahead

This evolution marks a significant step in TWAM's journey. It reflects our commitment to not just sending tools, but helping to build lasting livelihoods. By working through Primary Partners and strengthening the support around them, we're able to understand better the needs of the people we serve, pairing toolkits with training, mentoring and community leadership.

We're excited to share more stories in the months and years ahead as this model takes root and grows. Thank you for standing with us as we continue our mission.

Together, we are not just giving tools; we are giving hope and opportunity for generations to come.

What will this look like?

Closer to communities

We're introducing regional container delivery, bringing shipments nearer to where projects happen. This strengthens follow up and keeps the journey from donation to livelihood as smooth and timely as possible, reducing long journeys for recipients to collect their tools.



Guided pathways

To ensure the right support at the right time, we're moving from broad open applications to partner-guided pathways with scheduled intakes. This keeps the process locally led and ensures every group receives tailored mentoring. This means that instead of people just applying online, the in-country team will actually visit them, discuss their plans, and put together their application with them to ensure they get the right equipment, as well as determine what other training they may need to make their project a success.



Training at the heart

We're investing in the growth and success of Development Partner-run skills training centres: places where practical training, enterprise coaching, and after-care support turn toolkits into long-term opportunities.

Focused cohorts



We'll work with a manageable number of groups at a time so that Primary Partners can provide consistent coaching, track progress, and celebrate milestones - quality support that lasts.

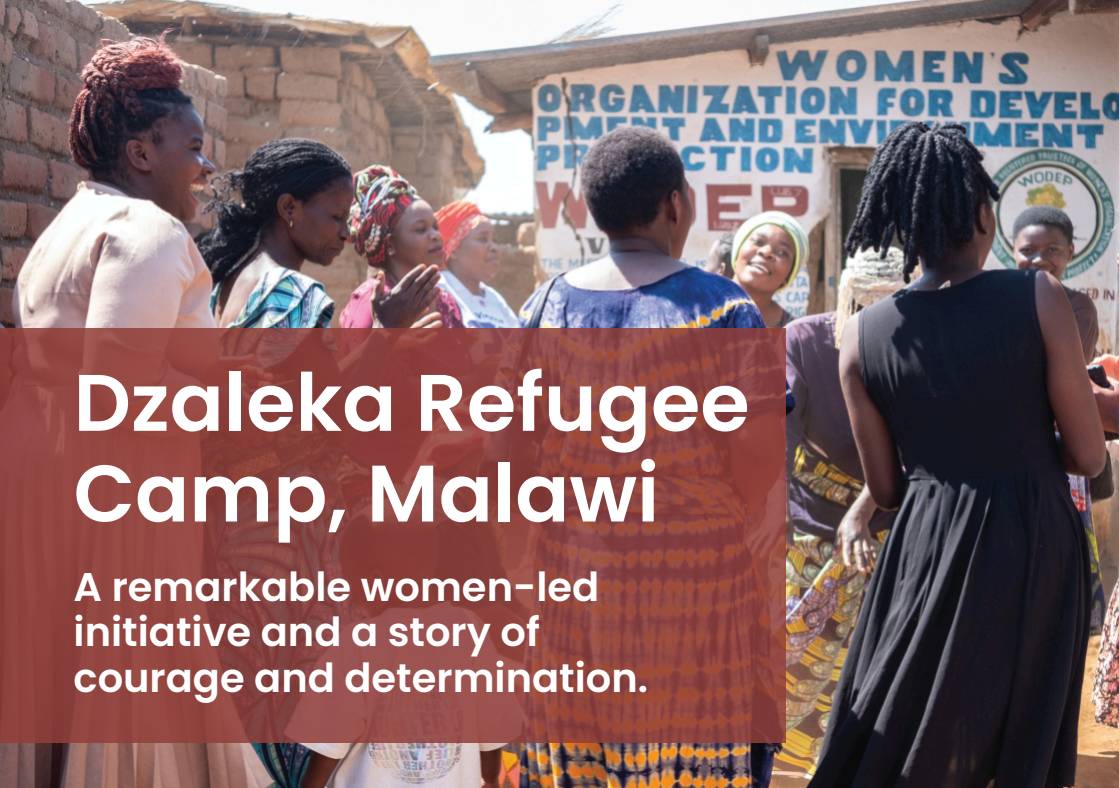
Public model

We're documenting what works into a public development model, a blueprint others can learn from and adapt.

Our hope is simple: that TWAM's approach becomes a movement, inspiring and sustaining change that grows beyond us.



If you have questions please call us on 01473 210220.



Dzaleka Refugee Camp, Malawi

A remarkable women-led initiative and a story of courage and determination.

The Women's Organisation for Development and Environment Protection (WODEP) is based in Dzaleka Refugee Camp in Malawi.

Founded in 2017, WODEP was created for refugee women from the Democratic Republic of Congo, Burundi and Rwanda, who came together in response to the immense challenges facing women in the camp: displacement, conflict, poverty, gender-based violence, and a lack of opportunity.

WODEP's leadership team reflects the strength and determination behind the organisation: Vincent, the dedicated secretary; Johari, programme manager; Katya, coordinator; Honete, responsible for publicity; Faida, leading advocacy; and Malabwe, WODEP's executive

director. Together, they work to ensure women in the camp have a voice and the means to rebuild their lives.

The organisation's mission is to engage women in building strong ecosystems, while improving food security and promoting sustainable agriculture. Their vision is simple but powerful: to protect and promote the welfare of women.

WODEP also places strong emphasis on environmental wellbeing. In rural Malawi, the consequences of climate change (such as soil erosion) and the irresponsible use of natural resources are everyday realities. As Florence shared during our visit, farms play a crucial role in sustaining families, yet agricultural tools are scarce. "The farms help us feed our children" she said, "but we lack basics like fertiliser."

Reaching out for help was not easy. In 2022, Vincent first discovered TWAM after many trips to an internet café - each visit incurring a significant travel expense. “Women are the first affected in Dzaleka” he explained. “We wanted to start a project to support sex workers, young mothers, widows and orphans. They gain the skills they can use to support themselves and their children.”

But the challenges are steep. WODEP struggles to pay trainers, who often leave after a few days of unpaid work. They have received six types of toolkits from TWAM, yet they lack the space to store and use them. Paying rent for their small meeting place is a constant worry.

Several women shared their harrowing experiences with us. Hannah, a single mother, spoke of the stigma female refugees face:

“ People say we have no worth, as we have already given birth. They don't let us teach or work. Some women feel like they are nothing. ”

Johari, focusing on education, highlighted that even when young people pass their exams, there are no scholarships or pathways forward. Odetta described how early marriage cuts short the futures of girls with great academic potential. Elizabeth, a mother of six, echoed the need for greater stability, opportunity and hope. And Honete stressed the urgency of an awareness campaign to change attitudes and empower more women in the camp.

TWAM's visit in September 2025 marked the beginning of a deeper collaboration. Throughout 2026 we plan to support WODEP with expanded toolkits, project-

based training, and help with space, rent, and awareness-raising campaigns that will allow their essential work to reach many more women.

WODEP's story is one of courage, dignity, and unwavering determination. We are honoured to stand with them - and with your support we look forward to building a stronger, safer and more hopeful future for the women of Dzaleka Refugee Camp.

Pictured below: Florence and Vincent from WODEP.



Our people

We are pleased to share with you changes in our team of staff.

Diane Leacock



We are delighted to welcome Diane who joins us as our Chief Financial Officer on a fractional basis. Diane will be assisting the board in setting financial direction and governance.



Trevor Maynard has been appointed our National Operations Manager, coordinating tool collection, vans, and managing the refurbishment and satellite centres.



Chloe Tomkins joins the team as our Fundraising Officer, having completed an MA in Poverty Management. She will be developing relationships with grant-making organisations.



Demi Nicolaou and Gary Rattle support the Centre Supervisors, ensuring the smooth flow of tool refurbishment, toolkit packing, and container loading.



Garth Melling, in addition to managing Rugby Refurbishment Centre, is now National Sales Manager, who oversees tool sales.



As well as his duties as Office Manager, **Jonny Green** has taken on the responsibility of administering everyday finance.



Karen Mitchell has been appointed as a member of staff providing essential support in Head Office.



Tools for the UK

We are delighted to announce the full launch of our tool distribution in the UK. This marks a significant milestone in our ongoing mission to equip charities and groups with the tools they need, while fostering a greener, healthier future for all. By opening applications within the UK, we look forward to reaching those who may benefit directly from our support.

If you, or someone you know, could benefit from our services, we warmly encourage you to get in touch. Please contact us at unitedkingdom@twam.uk, or visit www.applytotwam.uk/united-kingdom, and our UK Country Coordinator will respond promptly.

We look forward to collaborating with local partners, charities, and community members as we embark on this exciting new chapter together.

Ubuntu sets off for Rwanda

We were delighted to say ‘bon voyage’ to the first shipment of tools to be sent from TWAM to Rwanda for over 10 years! Shipped from Ipswich this January, the container (named ‘ubuntu’ - a Zulu word meaning ‘humanity’ or ‘closeness’) will bring much-needed toolkits to the team at the Leaders’ Educational Development Organisation (LEDO) in Rwamagana.

We look forward to telling you more about the tools inside, and their impact, in our next issue.





Just one toolkit can have positive repercussions for a whole community. People like Maria, featured on page 4 of this edition, share their skills to help create many livelihoods. Please continue to support us to ensure that every suitable tool is used to transform lives in Africa.

Please accept my gift of:

£15 £25 £50 £100 £150 £250 Other: _____

Name: _____

Address: _____

_____ Postcode: _____

ONLINE

You can donate online at twam.uk/donate or using the account details below including your surname and postcode as a reference.

Barclays Bank Account No: 33190994 | **Sort Code:** 20-44-51

CARD

You can donate by credit or debit card by ringing our head office on 01473 210220. We're open Monday to Friday, 9am-3pm.

Would you like to receive our monthly **Supporter E-News**? It's packed with up to date news and inspiring stories. If so, you can either write your email address below, or go to **twam.uk/stayintouch** to sign up online.

My email address is: _____

Boost your donation by 25p of Gift Aid for every £1 you donate

I want to Gift Aid my donation and any donations I make in the future or have made in the past 4 years to Tools with a Mission. I am a UK taxpayer and understand that if I pay less Income Tax and/or Capital Gains Tax in the current tax year than the amount of Gift Aid claimed on all my donations it is my responsibility to pay any difference.

Signed: _____ Date: _____

Please notify the charity if you want to cancel this declaration, change your name or home address, or no longer pay sufficient tax on your income and/or capital gains. If you pay Income Tax at the higher rate or additional rate and want to receive additional tax relief due to you, you must include all your Gift Aid donations on your self-assessment tax return or ask HM Revenue and Customs to adjust your tax code.

Tools with a Mission



2 Bailey Close, Hadleigh Road Industrial Estate, Ipswich, IP2 0UD
6 Paynes Lane, Rugby CV21 2UH

Registered charity in England and Wales no: 1104903 | Company no: 5114575
VAT Registration no: 347292286

twam.uk

01473 210220

post@twam.uk