



**HUMAN CONCERN USA**



# Clinic on Wheels: Project Update Report

# 2025

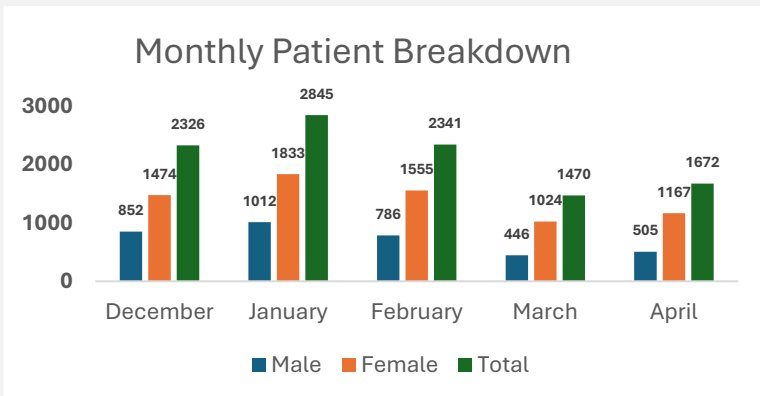
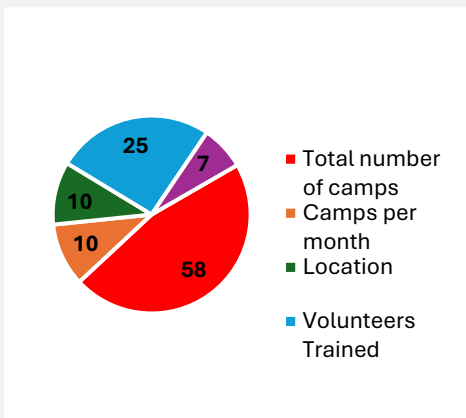
## Clinic on Wheels: Project Update Report

Project Code & Title: Clinic on Wheels  
 Report Date: 1 May 2025  
 Intermediary Name: Human Concern USA  
 Project Start Date: 01 November 2024  
 Project End Date: 31 October 2025  
 % Completed: 47%



### Introduction

Launched in November 2024, the Clinic on Wheels project is a lifesaving initiative by Human Concern USA, supported by Humanity Foundation, to bring essential healthcare directly to the doorsteps of people living in hard-to-reach areas of Bangladesh. With a dedicated team of doctors, nurses, and medical assistants traveling in a fully equipped mobile van, the project has reached some of the most underserved communities in Tangail, Mymensingh, Jamalpur, and Sherpur. From December 2024 to April 2025, the team conducted 58 medical camps and treated 10,654 patients, many of whom had never seen a doctor before. Services included general checkups, maternal care, child health support, and treatment for chronic diseases. Despite challenges like roadblocks, harsh weather, and power outages, the project has not only delivered critical care but also built trust, empowered local volunteers, and created a visible impact in the lives of thousands.

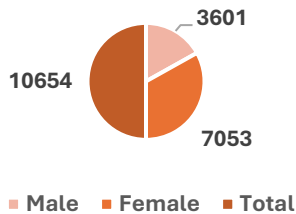


### Project Overview

Between December 2024 and April 2025, the Clinic on Wheels project successfully delivered essential healthcare services to a total of 10,654 patients across rural districts in Bangladesh. Of this number, 7,053 were female and 3,601 were male, meaning that nearly two-thirds (66.2%) of all patients served were women. This significant gender distribution not only reflects the project's inclusive approach but also

underscores its role in improving healthcare access for women in underserved communities—particularly for maternal health and chronic conditions often neglected in rural settings.

Gender Segregation

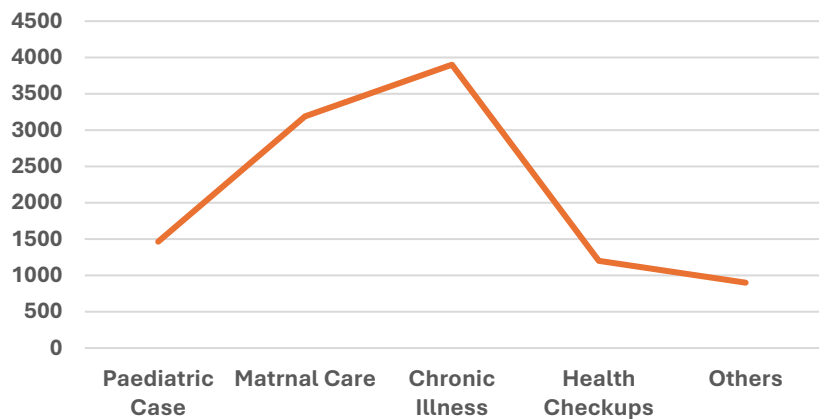


Patient volume varied month to month, with the highest turnout in January 2025, when 2,845 individuals received treatment. December and February also saw high attendance, with 2,326 and 2,341 patients respectively. Attendance dropped in March (1,470 patients) and April (1,672 patients), largely due to seasonal factors such as agricultural workloads and Ramadan, during which daytime activity in these communities typically declines.

## Major Morbidity

From December 2024 to April 2025, the Clinic on Wheels project treated a wide range of health issues, with chronic illnesses being the most common, affecting 3,900 patients. Maternal care followed closely, with 3,190 women receiving antenatal and postnatal services. Pediatric cases totaled 1,464, mostly for common infections. Additionally, 1,200 patients came for general health checkups, and 900 were treated for other conditions such as skin issues and minor injuries. These figures reflect the high demand for chronic and maternal health services in underserved rural areas.

Major Disease Morbidity





## Monthly Updates

### November:

In November 2024, the Clinic on Wheels project began with a strong focus on identifying the communities most in need of healthcare. The location selection process was rigorous and data-driven—prioritizing areas with limited or no health facilities, poor accessibility, high population density, and widespread financial hardship. Field visits were conducted to assess real conditions on the ground, ensuring that only the most underserved sites were chosen. These included ten locations across Tangail, Mymensingh, Jamalpur, and Sherpur districts. Alongside this, the project team recruited medical staff, procured supplies, printed materials, and arranged transport to prepare for full-scale operations.

### December

Clinic on Wheels has provided outdoor medical services, such as general check-ups, maternal care, pediatric care, NCD care, etc. in the mentioned areas. A total of 2326 patients were served in December 2024. The number of patients is distributed according to the area and gender are given below-

Serial No.	Area	Number of patients	Gender	
			Male	Female
1	Sushua community clinic (Chor Sushua Government Primary School), East-North Sushua	249	82	167
2	Asatunnesa Dakhil Madrasa, South Sushua	190	65	125
3	East Ramail Government Primary School	250	104	146
4	Fakir Mainuddin High School, Basudebkol	225	70	155
5	Kaza, Gafargaon, Mymensingh	235	70	165
6	Satarbari, Gafargaon, Mymensingh	220	92	128
7	Tulshirchor Union, Jamalpur Sadar	243	94	149
8	Laxmirchor Union, Jamalpur Sadar	259	105	154
9	Bilashpur Dakhil Madrasa, Jhinaigati Thana	230	84	141
10	Rangtia High School, Jhinaigati Thana	225	86	144
	<b>Total</b>	<b>2326</b>	<b>852</b>	<b>1474</b>

## January

A total of 2845 patients were served in January 2025. The number of patients is distributed according to the area and gender given below-

Serial No.	Area	Number of patients	Gender	
			Male	Female
1	Sushua community clinic (Chor Sushua Government Primary School), East-North Sushua	252	81	171
2	Asatunnesa Dakhil Madrasa, South Sushua	247	87	160
3	East Ramail Government Primary School	189	76	113
4	Fakir Mainuddin High School, Basudebkol	199	67	132
5.1	Kaza, Gafargaon, Mymensingh	168	62	106
5.2	Kaza, Gafargaon, Mymensingh	305	133	172
6	Satarbari, Gafargaon, Mymensingh	274	106	168
7.1	Tulshirchor Union, Jamalpur Sadar	210	66	144
7.2	Tulshirchor Union, Jamalpur Sadar	161	51	110
8.1	Laxmirchor Union, Jamalpur Sadar	232	83	149
8.2	Laxmirchor Union, Jamalpur Sadar	189	80	109
9	Bilashpur Dakhil Madrasa, Jhinaigati Thana	246	70	176
10	Rangtia High School, Jhinaigati Thana	173	50	123
	<b>Total</b>	<b>2845</b>	<b>1012</b>	<b>1833</b>

## February

A total of 2341 patients were served in February 2025. The number of patients is distributed according to the area and gender are given below-

Serial No.	Area	Number of patients	Gender	
			Male	Female
1	Sushua community clinic (Chor Sushua Government Primary School), East-North Sushua	230	78	152
2	Asatunnesa Dakhil Madrasa, South Sushua	137	45	92
3	East Ramail Government Primary School	207	72	135
4	Fakir Mainuddin High School, Basudebkol	235	67	168
5	Kaza, Gafargaon, Mymensingh	228	86	142
6	Satarbari, Gafargaon, Mymensingh	141	40	101
7	Tulshirchor Union, Jamalpur Sadar	147	57	90
8	Laxmirchor Union, Jamalpur Sadar	207	65	142
9.1	Bilashpur Dakhil Madrasa, Jhinaigati Thana, Sherpur	199	61	138
9.2	Bilashpur Dakhil Madrasa, Jhinaigati Thana, Sherpur	253	94	159
10.1	Rangtia High School, Jhinaigati Thana, Sherpur	187	63	124
10.2	Rangtia High School, Jhinaigati Thana, Sherpur	170	58	112
	<b>Total</b>	<b>2341</b>	<b>786</b>	<b>1555</b>

### March

A total of 1470 patients were served in March 2025. The number of patients is distributed according to the area and gender are given below-

Serial No.	Area	Number of patients	Gender	
			Male	Female
1	Sushua community clinic (Chor Sushua Government Primary School), East-North Sushua	173	52	121
2	Asatunnesa Dakhil Madrasa, South Sushua	105	37	68
3	East Ramail Government Primary School	135	35	100
4	Fakir Mainuddin High School, Basudebkol	206	69	137
5	Kaza, Gafargaon, Mymensingh	142	38	104
6	Soterobari, Gafargaon, Mymensingh	107	31	76
7	Tulshirchor Union, Jamalpur Sadar	156	46	110
8	Laxmirchor Union, Jamalpur Sadar	143	41	102
9	Bilashpur Dakhil Madrasa, Jhinaigati Thana, Sherpur	150	49	101
10	Rangtia High School, Jhinaigati Thana, Sherpur	153	48	105
	<b>Total</b>	<b>1470</b>	<b>446</b>	<b>1024</b>

### April

A total of 1672 patients were served in April 2025. The number of patients is distributed according to the area and gender, as given below-

Serial No.	Area	Number of patients	Gender	
			Male	Female
1	Sushua community clinic (Chor Sushua Government Primary School), East-North Sushua	151	49	102
2	Asatunnesa Dakhil Madrasa, South Sushua	133	35	98
3	East Ramail Government Primary School	153	36	117
4	Fakir Mainuddin High School, Basudebkol	140	48	92
5	Kaza, Gafargaon, Mymensingh	150	54	96
6.1	Soterobari, Gafargaon, Mymensingh	147	52	95
6.2	Soterobari, Gafargaon, Mymensingh	131	41	90
7	Tulshirchor Union, Jamalpur Sadar	161	35	126
8	Laxmirchor Union, Jamalpur Sadar	183	62	121
9.	Bilashpur Dakhil Madrasa, Jhinaigati Thana, Sherpur	163	38	128
10.	Rangtia High School, Jhinaigati Thana, Sherpur	157	55	102
	<b>Total</b>	<b>1672</b>	<b>505</b>	<b>1167</b>



## Procurement and Supplies

Medical instruments such as emergency care kits, sphygmomanometers, stethoscopes, pulse oximeters, weight scales, height measuring tapes, and hand sanitizers were purchased.

Partnerships were established with five reputed pharmaceutical companies for the procurement of essential medicines:

1. Square Pharma
2. Beximco Pharma
3. Oponin Pharma
4. Healthcare Pharma
5. Orion Pharma

Each month, the team provided over 60 types essential medicines, including antibiotics like azithromycin and Cefixime, pain relievers such as paracetamol and ibuprofen; digestive aids like pantoprazole; vitamins; antihistamines; and emergency items like ORS and zinc sulfate.

The variety of medicines provided is given below:

Serial No.	Medicine	Generic
1	Tab. Napa 500mg	Paracetamol
2	Tab. Napadol	Paracetamol+Tramadol
3	Tab. Peptid 20mg	Famotidine
4	Tab. Tolson 50 mg	Tolperison
5	Tab. Histal 4mg	Chlorpheniramine Maleate
6	Tab. Butaret SR	Butamirate Citrate
7	Syp. Famodin 60 ml	Famotidine
8	Syp. Orcef 50ml	Cefixime
9	Syp. Metryl 50 ml	Metronidazole
10	Tab. Esotid 20mg	Esomeprazole
11	Tab. Domin 10mg	Domperidone Maleate
12	Tab. Lumona 10mg	Montelukast
13	Tab. Visral 50mg	Tiemonium Methylsulfate
14	Cap. Orcef 200mg	Cefixime
15	Tab. Zithrin 500mg	Azithromycin
16	Tab. Recox 120mg	Etoricoxib

17	Tab. Neurobest	Vit. B1+B6+B12
18	Syp. Zithrin 20ml	Azithromycin
19	Syp. Emeren 50ml	Ondansetron
20	Tab. Ceclofen 100mg	Aceclofenac
21	Tab. Amlopin 5mg	Amlodipine
22	Tab. Bigmet 500mg	Metformin
23	Tab. Protonil 20mg	Pantoprazole
24	Tab. Filmet 400mg	Metronidazole
25	Tab. Leo 500mg	Levofloxacin
26	Cap. Prazole 20mg	Omeprazole
27	Tab. Zofra 8mg	Ondansetron
28	Tab. Cetrizine 10mg	Cetirizine Hydrochloride
29	Syp .Napa 100 ml	Paracetamol
30	Tab. Acical 500mg	Calcium Carbonate
31	Acme ORS	Oral rehydration salt
32	Cream. Permin	Permethrin
33	Tab. V-Plex	Vit. B-Complex
34	Tab. Diclofen 50mg	Diclofenac Sodium
35	Tab. Twicef 500mg	Cefadroxil
36	Syp. Salmolin 60ml	Salbutamol
37	Syp. V-Plex 100ml	Vit. B-Complex
38	Tab. Cipro A 500mg	Ciprofloxacin
39	Tab. Duralax 5mg	Bisacodyl
40	Tab. Mucolyt 8mg	Bromhexine Hydrochloride
41	Calamine Lotion	Calamine + Zinc Oxide + Glycerine
42	Syp. Deslorin 60ml	Desloratidine
43	Syp. Mazic 100ml	Zinc Sulphate M.
44	Supp. V-Cap	Combine Preparation
45	Tab. Folison 5mg	Folic Acid
46	Cap.Defaz CI	Combine Preparation
47	Syp. Histal	Chlorpheniramine M.
48	Cap. Lucan R 50mg	Fluconazole
49	Cap. Lucan R 150mg	Fluconazole
50	Tab. Flamex 400mg	Ibuprofen
51	Tab. Flamex 200mg	Ibuprofen
52	Tab. Secnid DS	Secnidazole
53	Tab. Alben DS	Albendazole
54	Tab. Pase 0.5 mg	Clonazepam
55	Tab. Cardon 50mg	Losartan Potassium
56	Tab. Entacyd Plus	Al(OH) <sub>3</sub> +Mg(OH) <sub>2</sub> +Simethicone

57	Tab. Baby Zinc 20mg	Zinc Sulfate Monohydrate
58	Tab. Dophylin 400mg	Doxofylline
59	Tab. Maxolax 10mg	Baclofen
60	PD. Domiren	Domperidone
61	Tab. Riboson 5mg	Riboflavin
62	Cream. Miconex	Miconazole 2%
63	Tab. Vergon 5mg	Prochlorperazine
64	Syp. Flux	Flucloxacilin
65	PD. Flacol	Simethicone
66	Tab. Ceevit	Vitamin C [Ascorbic acid]

A comfortable and durable van was rented for a year and customized to serve as the mobile clinic's transport, carrying staff, medicines, and equipment to various rural locations.

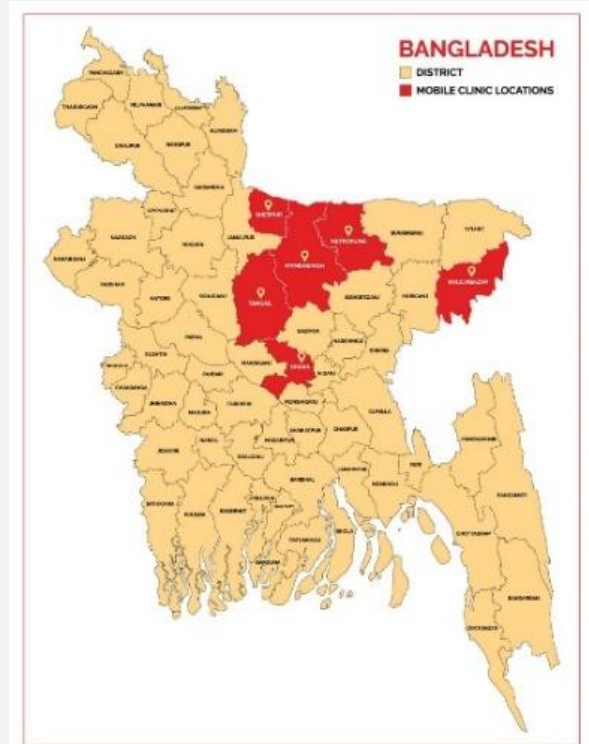
## Management Arrangements

To keep the project running smoothly, the Clinic on Wheels team followed a clear and practical routine. At the beginning of each month, routes were carefully planned so the mobile clinic could reach communities on time. Operating from its base in Uttara, Dhaka, the team traveled daily to remote areas, sometimes staying overnight when needed to cover longer distances.



Before each camp, local leaders and volunteers helped spread the word and register patients in advance. During the camps, the team collected prescription data by hand, which was later uploaded to a cloud system at the Dhaka office—an approach that works for now, though real-time entry is a future goal.

Local volunteers also played a key role in keeping things organized. They were trained to help manage the crowd, guide patients, and support the medical staff, building both trust and local capacity in the process.



## Location

Assessing areas with limited health facility access. Considering population size and financial hardship of residents. Conducting physical visits to assess real ground conditions. Finalizing 10 key locations across Tangail, Mymensingh, Jamalpur, and Sherpur districts. Locations are as follows:

<b>Tangail</b>	<ul style="list-style-type: none"> <li>• Sushua community clinic</li> <li>• Asatunnesa Dakhil Madrasa</li> <li>• East Ramail Government Primary School</li> <li>• Fakir Mainuddin High School, Basudebkol</li> </ul>
<b>Mymensingh</b>	<ul style="list-style-type: none"> <li>• Gafargaon – 1, Mymensingh</li> <li>• Gafargaon – 2, Mymensingh</li> </ul>
<b>Jamalpur</b>	<ul style="list-style-type: none"> <li>• Tulshirchor Union,</li> <li>• Laxmirchor Union,</li> </ul>
<b>Sherpur</b>	<ul style="list-style-type: none"> <li>• Bilashpur Dakhil Madrasa, Jhinaigati Thana</li> <li>• Rangtia High School.</li> </ul>



## Outputs, Outcomes, and Results Achieved to Date

Indicator	Target	Achieved so far
Number of camps organize	10 camps per month	58 camps organized
Number of patients served monthly	3000 patients per month	A total of 10,654 patients served till April (30% of target)
Service types provided	Emergency Care, General & Maternal Health, NCD care, Health checkup	Achieved consistently
Volunteer and Community mobilization	At each camp site	Achieved
Medicine distribution	Primary free medicine provided per patient	Achieved
Data Preservation	Data are being collected online for each patient	Achieved



## Key Outcomes

- Access to healthcare significantly improved in 10 rural locations.
- Health awareness promoted through regular patient interaction.
- Community trust and participation increased, though prescription and documentation compliance require further efforts.

## Risks Encountered and How They Were Managed

<b>Challenges</b>	<b>Management Strategy</b>
Missing patient records (NID, phones)	Volunteer-led awareness, motivational talks at camps.
Bad weather (fog, rain)	Early departures, flexible rescheduling.
Roadblocks/protests	Real-time rerouting and coordination with local contacts.
Data entry challenges	Manual data preservation: future move to mobile data upload planned
Low follow-up on lab investigations	Counseling and emphasis on follow-up during camps.
Power outages	Prioritizing morning sessions: portable power sources planned.
Reduced turnout (cultivation, Ramadan)	Adjusted camp times, expanded community mobilization.

## Financials

From November 2024 to March 2025, the Clinic on Wheels project spent a total of **BDT 6,105,653** (approx. **USD 50,460**). The majority of expenses went toward **project operations**, followed by **program management, monitoring, and administrative costs**. Spending increased as field activities scaled up, with January marking the highest expenditure.

Sl No	Summary	Month	Budget	Expenditure	Remaining Budget
<b>1</b>	<b>Program Management Cost</b>	November		80,000	
		December		230,000	
		January		260,000	
		February		260,000	
		March		260,000	
<b>2</b>	<b>Project Operation Cost</b>	November		124,900	
		December		862,250	
		January		905,386	
		February		834,715	
		March		813,192	
<b>3</b>	<b>Project Monitoring Cost</b>	November		50,000	
		December		82,000	
		January		130,000	
		February		50,000	
		March		50,000	
<b>4</b>	<b>Administrative Exp</b>	November		88,790	
		December		36,880	
		January		65,620	
		February		56,560	
		March		45,360	
<b>5</b>	<b>Sub- total in BDT</b>			<b>5,285,653</b>	
<b>6</b>	<b>Eid Bonus</b>			<b>330,000</b>	
<b>7</b>	<b>Tax &amp; Vat</b>			<b>490,000</b>	
<b>8</b>	<b>Total in BDT</b>			<b>6,105,653</b>	
<b>9</b>	<b>Total in USD</b>			<b>\$50,460</b>	
	<b>Conversion Rate: 1 USD = 121 Bangladeshi Taka (BDT)</b>				