



**THE RAIN IS NOT THE SAME
FOR EVERYONE**
BUT HELP CAN REACH EVERYONE

TECHO MÉXICO

Fotografía: Felix Marquez (AP)

WHO WE ARE

We are an organization that works with communities in search of a just, egalitarian, integrated and poverty-free society in which all people can fully exercise their rights and duties and have every opportunity to develop their capabilities.



YOUTH

COMMUNITIES



ALLIES

Through collaborative work, we generate improbable encounters that transform realities.



**THE OUTLOOK IN THE AFFECTED AREAS
REMAINS UNCERTAIN, BUT TODAY WE KNOW
WHO NEEDS HELP MOST URGENTLY.**

Why we are here?

More than

46 THOUSAND HOMES

were damaged or totally lost due to the rains caused by Hurricanes Raymond and Priscilla in Veracruz, Puebla, and Hidalgo.

More than

40 MUNICIPALITIES

are affected.

More than

**44 MUNICIPALITIES WITH
246 TOWNS**

incommunicated.

**THOUSANDS OF FAMILIES
WITHOUT A HOME TO SHELTER IN**

Extreme rain events are not isolated incidents. Every season, thousands of families face the risk of losing their homes.

What changes are the conditions in which we live.

When there is no drainage, basic services, or adequate housing, rain stops to be natural and becomes a threat.

That's why acting together matters.



what do we
propose?

We activated our Emergency protocol to respond alongside communities with:

100 shelters (emergency housing)

100 rainwater systems.

An urgent and dignified response,
so that no family faces the next downpour
without a safe place to take shelter.

TESTIMONY
Earthquake 2017
OAXACA

WATCH HERE





TESTIMONY

Hurricanes Otis 2023
and John 2024
GUERRERO

WATCH HERE



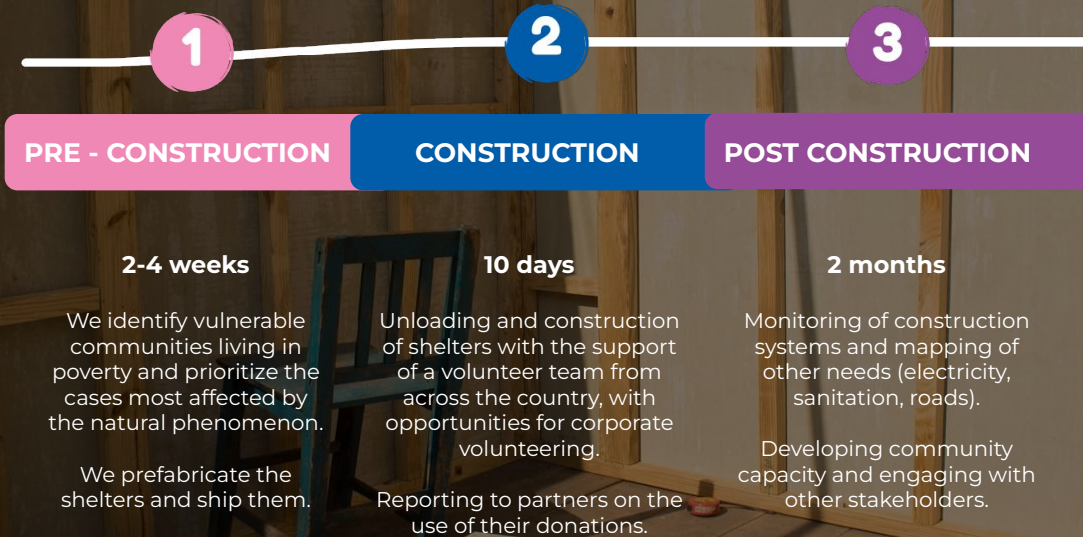
TESTIMONY

Alberto 2024
TAMAULIPAS

WATCH HERE



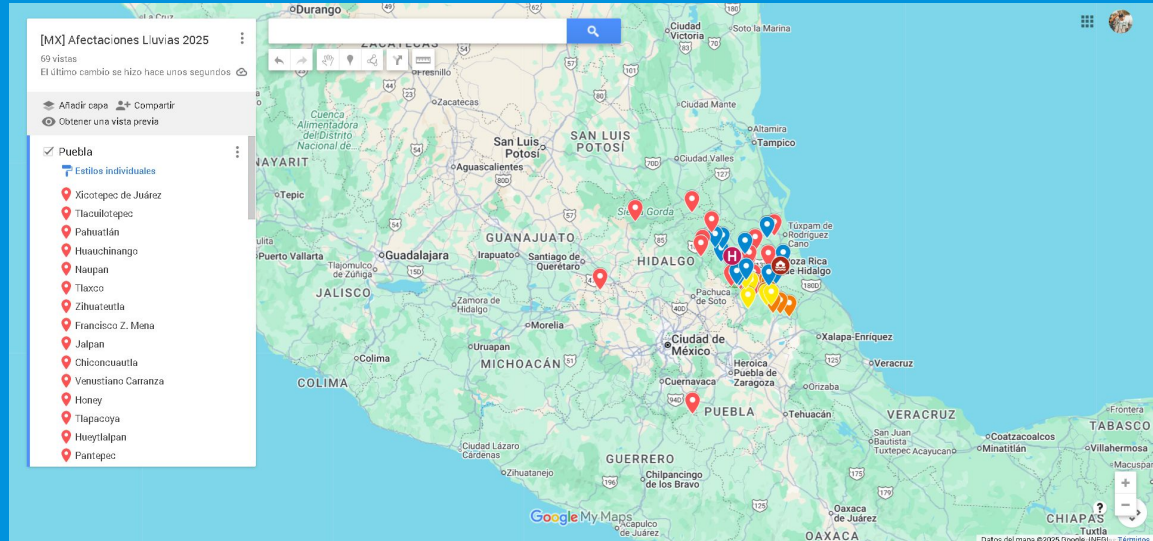
¿How we work?



MAPPING OF AFFECTATION

We conduct an ongoing mapping of affectations areas and potential intervention points to identify the families most in need and respond promptly.

[Check here the affected areas so far.](#)



STAGE 1 Field activation

Over the next two weeks, we will visit communities to validate the mapping information and define priorities for action.

The TECHO volunteer team is already on the move!



STAGE 2 The construction



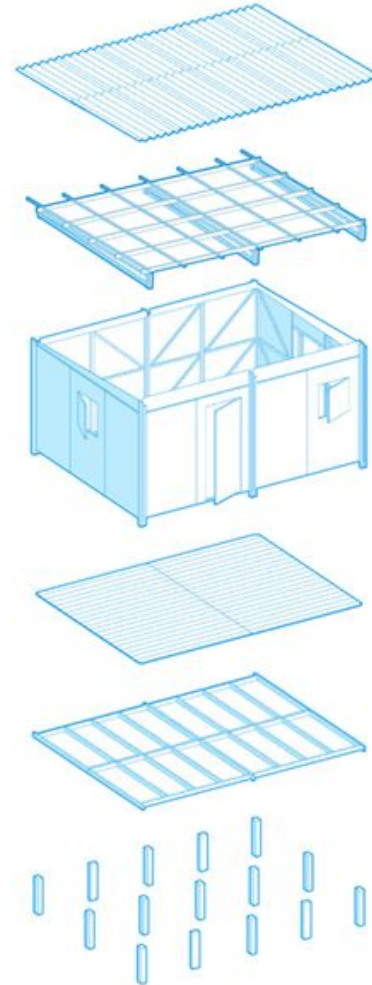
We rebuild where the emergency has never left.

What does each shelter consist of?

These construction systems measure at least 18 square meters, based on rigid pine wood frames covered with fiber cement panels and removable wooden floors.

Under normal conditions, they are built within two to three days by the beneficiary families themselves, working with volunteers.

This temporary shelter safeguards the safety and lives of affected people multiple times, as it is a reusable module.



6 **TEJADO**
12 Láminas + 35 Pijas

5 **ESTRUCTURA DE TECHO**
3 Cerchas + 5 Largueros + 7 Transversales

4 **PANELES, MARCOS, PUERTAS Y VENTANAS**
14 Paneles + 4 Marcos
+ 1 Puerta + 3 Ventanas

3 **DUELA**
40 Piezas de duela

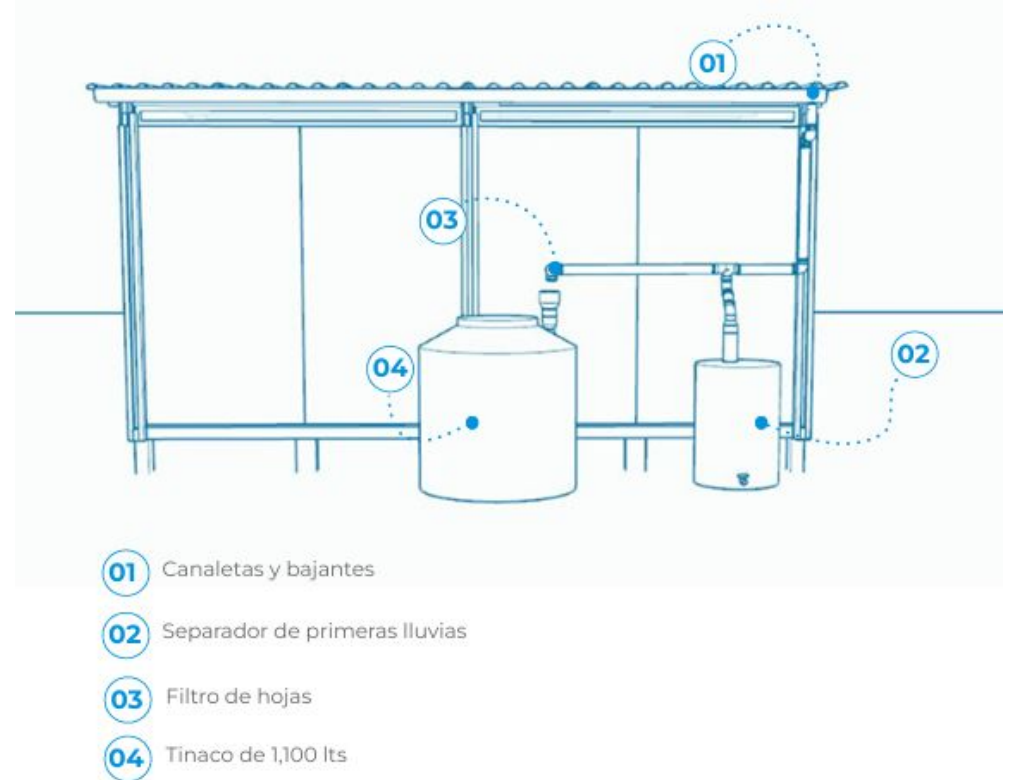
2 **PARRILLAS**
4 Parrillas
(dos "tipo 1" y dos "tipo 2")

1 **PILOTES**
15 Pilotes de Madera

Access to water through rain and mass storage

Each shelter will be equipped with a rainwater harvesting system (SCALL) to immediately address the water shortage caused by the loss of the families' built assets.

Each system has a storage capacity of 1,100 liters and is expected to provide a minimum of 90 liters per day during the rainy season. It has a useful life of 50 years.



It is projected that with a SCALL, 40% of the annual water consumption (approximately, depending on the region) required by the family would be covered.

Economic proposal for the first wave of 15

	Total Cost
15 shelters Includes materials transportation and all tools, processes and visits, materials required for construction.	\$96,500 USD
15 water systems Includes materials transportation and all tools, processes and visits, materials required for construction.	\$22,000 USD
Total for the intervention:	\$118,500 USD

*Sent in batches of 15 to expedite response.
First delivery window: Mid-December.

Impact

DIRECT BENEFICIARIES: +75 PEOPLE = 15 FAMILIES

INDIRECT BENEFICIARIES: +225 PEOPLE



**YOUR HELP WILL BRING BACK A HOME
TO THOSE WHO TODAY HOPE TO HAVE A ROOF AGAIN**