



**CAMBODIAN  
CHILDREN'S FUND**

**IN PROFILE**  
Get to know  
us better



“ Every time I visited the dump site, children followed me simply saying, ‘Som tov rien’ (‘please take me to school’). ”

~ **Scott Neeson**

CCF Founder and Executive Director





**AMY TENNENT**

Chairman, Velcro  
Industries Ltd

“What has been created in such a downtrodden, extremely impoverished community is an inspiration. To see children who previously had scavenged for food on a daily basis, and worked hard to find scraps of food or recycle plastic from the toxic garbage dump – to see them flourish, and feel safe, and be nourished with food and knowledge is intoxicating.”



**JUSTIN DOWEL**

Executive Chairman,  
Natures Organics  
Pty Ltd

“We have been proudly supporting CCF since 2007. I am overwhelmed with the care, love and support provided by Scott and team. We have a commitment that we will be here to support CCF as long as we are in business. Natures Organics supports a number of NGOs, but CCF was our first and will always be in our heart. We are eternally grateful for the work that has been done and being allowed to play our part in supporting it.”



**NiQ LAI**

Co-Owner & Group  
CEO Hong Kong  
Broadband Network

“Over the past decade, we have witnessed firsthand the poverty breaking impact that CCF is having. Their unique model has changed the lives of the entire Steung Meanchey community and continues to provide a hand-up rather than merely a hand-out for thousands of families. We couldn't be prouder to be involved with CCF's work.”

# ABOUT CAMBODIAN CHILDREN'S FUND

---

Cambodian Children's Fund (CCF) was founded in 2004. Scott Neeson, former President of 20th Century Fox, travelled to Phnom Penh between careers in Hollywood. Here, he visited the Steung Meanchey dump site - one of the largest in Asia - and saw a level of poverty that shocked him to his core. Cambodia's most impoverished and neglected children were living among the rubbish, scavenging what they could to eat and sell. Many were abandoned, and all were at risk of trafficking and abuse.

Realizing he was someone who could help, Scott founded CCF to house and educate these children. Working with children and their families, CCF has developed an award-winning holistic education and community development program to break the cycle of poverty once and for all.

The dumpsite closed in 2009. However, more than 1,800 children and their families still require CCF's support today. Cambodia's most marginalized families live in the shadow of the former dump site, still scavenging to make a living.



# OUR VISION

---

Transforming the most impoverished kids into tomorrow's leaders



# OUR MISSION

---

CCF believes that with quality education and leadership, one child has the potential to lift an entire family out of poverty and a generation of educated children has the power to change a society.

By investing in the health, education and well-being of impoverished children and youth, we are building the skills, confidence and integrity they need to become leaders of positive change in their communities.

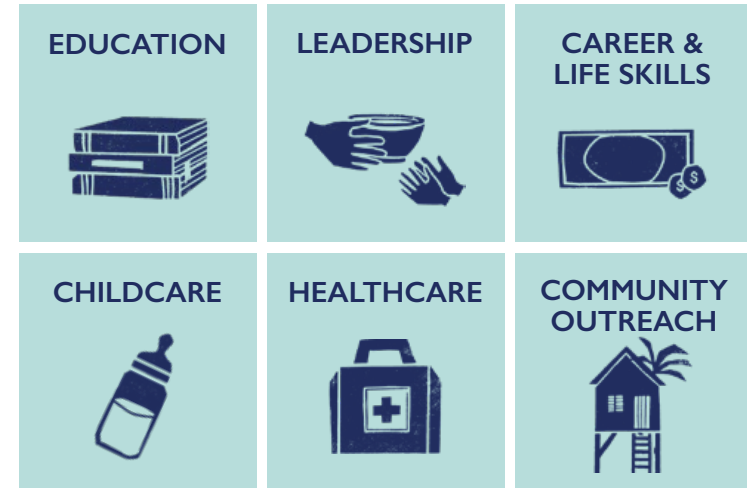
We take a holistic, on-the-ground approach to developing integrated yet simple solutions to the complex issues of poverty. We work hand-in-hand with local families to deliver support programs, strengthen self-governance and grow safe, supportive communities where children can thrive.



# HOW OUR PROGRAMS WORK

Working in the Steung Meanchey community, our services wrap around a child to protect them from dropping out of school, and support their family to be safe, stable, and secure. Within our six key programs we provide vital services to families who cannot access the most basic of a security etc; schooling; healthcare; housing; water; and more. This tested and proven model gives students and their families the tools to break the cycle of poverty once and for all. CCF is educating the last generation of children who will know such poverty in Cambodia.

CCF operates over 60 intertwined projects across **6 key** program areas:



# OUR APPROACH

CCF takes a holistic approach to tackling poverty by implementing a proven model of success based on **3 key** principles:



# OUR IMPACT AT A GLANCE

1,700



students currently studying through CCF

250 TONS



of rice distributed annually to those in need in the community

30,000



medical treatments and consultations annually

More than  
543

homes provided to the poorest families



460

students now studying at the NCA - our purpose built STEM high school opened in 2017



148,300

total lives have been impacted by CCF programs in Cambodia



118

students have graduated university - the first in their families



100%

of the Grade 12 national exam pass rate compared to the national average of 72% in 2022



We have a very high retention rate. In an Academic Year, less than 5% of students are absent.

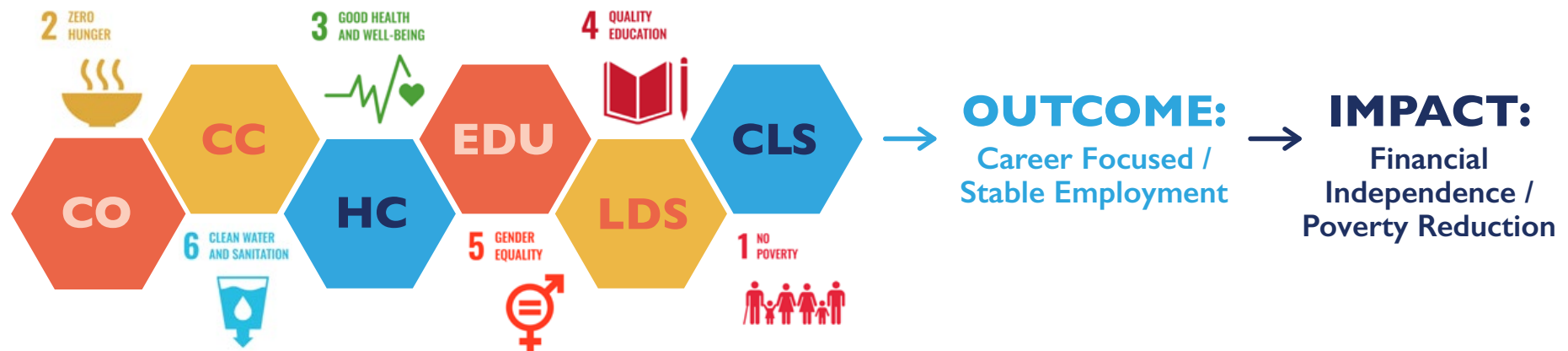


Since the launch of our Maternal Care Program in 2010, **ZERO** mothers have died during childbirth. Previously, the maternal death rate was at 8% in the Steung Meanchey Community

# CCF AND UN GOALS

CCF's six interconnected programs action the first six UN Sustainable Development Goals; the blueprint to achieve a better and more sustainable future for all.

Our programs work together to create sustainable change in the community that is effective and long lasting. Each program interacts with the other to create tailored support for children and families, eliminating all barriers to education. By working across all areas, CCF is able to make a deeper impact in our shared vision of a world with no poverty.



COMMUNITY OUTREACH - CHILDCARE - HEALTHCARE - EDUCATION - LEADERSHIP - CAREER & LIFE SKILLS

## FINANCIAL RESULTS / HIGHLIGHTS

CCF is committed to financial transparency, sustainability and accountability. You can view all of CCF's past annual reports and audited financial statements on our website.

[cambodianchildrensfund.org](http://cambodianchildrensfund.org)



## CHARITY RATINGS & WHERE YOUR DONATION GOES



### CHARITY NAVIGATOR

Charity Navigator is one of the world's largest independent charity watchdogs, ranking non-profit organisations on criteria such as financial management, governance, and transparency. We are incredibly proud that 2022 marked the tenth consecutive year of CCF receiving the highest score from Charity Navigator; four out of four stars.



### GUIDESTAR

CCF was awarded the Platinum badge from Guidestar, the world's largest source of information on non-profit organisations.



### GREAT NONPROFITS

We're proud to announce that CCF has been awarded a Top-Rated Award for the eight year running. This prestigious award is given based on reviews from those with direct experience of a non-profit organisation's work, such as volunteers, donors, and supporters.

At CCF, we ensure that your donations go directly where they are needed. CCF's strong and long track record in ratings proves that CCF is committed to transparency, accountability, financial health and ethical practices.

85%

Programs

9%

Administration

6%

Fundraising

# OUR ALL STAR TRINITY SCHOLAR

---

When she was just 11, Sophy was photographed on the city garbage dump in Phnom Penh, where she worked from dawn until dusk picking through piles of festering rubbish. The image was taken during a visit by Scott Neeson, before CCF had even been set up.

12 years later, Sophy stood on a stage at the prestigious Trinity College at the University of Melbourne in Australia and gave the valedictorian speech for her graduating class of 2019 after completing her first year as a university student.

Anyone who heard Sophy's speech that day could not fail to be moved by her truly extraordinary story. Not everyone in the audience for the graduation ceremony knew about Sophy's story. Even some of her classmates who had spent the last year studying with her, were not aware. Her story would reduce some of them to tears.

It was that of a little girl who grew up in poverty in Cambodia and could only dream of one day going to school.





“I feel like I am starting to see the world as a bigger place now,” she says. “Since being there, I have grown as a person and I think I am more confident. I have become more independent, more daring to try new experiences.”

She also now has the company of three other CCF students, Seng Hoarng, Sovannry, and Vannita, who were awarded the same Trinity College scholarship. Their achievements are a big inspiration for other CCF students, who see them as role models, trailblazing a path for the future. All four students look forward to one day returning to Cambodia to help support and develop their own communities.

“Ten years ago, I was a clueless little girl who helped support her family by picking rubbish on a noxious and filthy garbage dump every day for money. I did that seven days a week, from early morning until dark,” Sophy told the audience. Home was a tattered makeshift tent, where the family of eight would squeeze into at night. Breakfast and lunch was discarded, rotting food that Sophy found amid the fly-infested dump.

“It was really hard. But when I was living in that situation, I didn’t realise it. It was all I knew. It was only after that I thought ‘Oh my God, that was my life’.” Her life changed when Sophy met Scott Neeson on the garbage dump one day, and she was able to join school for the first time in her life.

Being in a classroom was a revelation and she proved to be a star student. Her determination has taken her all the way to Australia, when she was selected as the first CCF student to receive a scholarship to Trinity College for a foundation program and degree.



# HOW CAN YOU GET INVOLVED OR SUPPORT CCF?

---

There are many ways that you can support CCF. You can donate to our community, sponsor a child or support a granny, leave a lasting legacy through a gift in your will, coordinate workplace/payroll giving, commit to a regular donation, or provide gifts in kind that will be a great resource on the ground. For more information about ways you can give, please visit our website.

If you are an organization, a strategic partnership may be more meaningful to your vision and goals.

CCF already works with a range of partner organizations around the world.

To find out more about what we offer to corporates and organizations, please contact your local CCF office.



# BE OUR PARTNER

Many of CCF's partners build Corporate Social Responsibility (CSR) into their practices. CSR is incredibly important and vital to an organization's success, as consumers and certain regulators expect businesses to operate responsibly and give back to their communities.

CSR partnerships with successful organizations like CCF attract customers who share the same values, improve public image, increase brand awareness and recognition, promote competitive advantage, increase customer engagement and increase employee engagement for our partners.

Our partnerships are strategic, often long term, and always mutually beneficial. We aim to create meaningful relationships that engage companies and their employees deeply in the work of CCF and that create win-win opportunities. We aren't simply looking for transactional grant making – we want partner organizations who can help us and themselves on the road to sustainability.

Contact your local office to learn more about CCF's strategic corporate partnerships.





## Cambodia

P.O. Box 111, Phnom Penh

General inquiries:

[info@cambodianchildrensfund.org](mailto:info@cambodianchildrensfund.org)

Tel: +855 23 991 944 (Khmer)

Tel: +855 23 988 999 (English)

## United States

2309 Santa Monica Blvd, PMB 833

Santa Monica, CA 90404

General inquiries:

[info@cambodianchildrensfund.org](mailto:info@cambodianchildrensfund.org)

Tel: +1 310 496 9931

Fax: +1 310 399 5221

## United Kingdom

Ground Floor

24 Monson Road

London. NW10 5UP

General inquiries:

[admin-uk@cambodianchildrensfund.org](mailto:admin-uk@cambodianchildrensfund.org)

Tel: +44 78 031 588 13

## Australia

Suite 89, 78 William Street,  
Sydney. NSW, 2011

General inquiries:

[info@ccf-australia.org](mailto:info@ccf-australia.org)

Tel: +61 2 9380 8822

## Hong Kong

Unit A-C, 16/F, Tak Lee  
Commercial Building,  
113 - 117 Wan Chai Road,  
Wan Chai, Hong Kong

General inquiries:

[info@ccf-hk.org](mailto:info@ccf-hk.org)

Tel: +852 3612 9730





# CAMBODIAN CHILDREN'S FUND

[cambodianchildrensfund.org](http://cambodianchildrensfund.org)