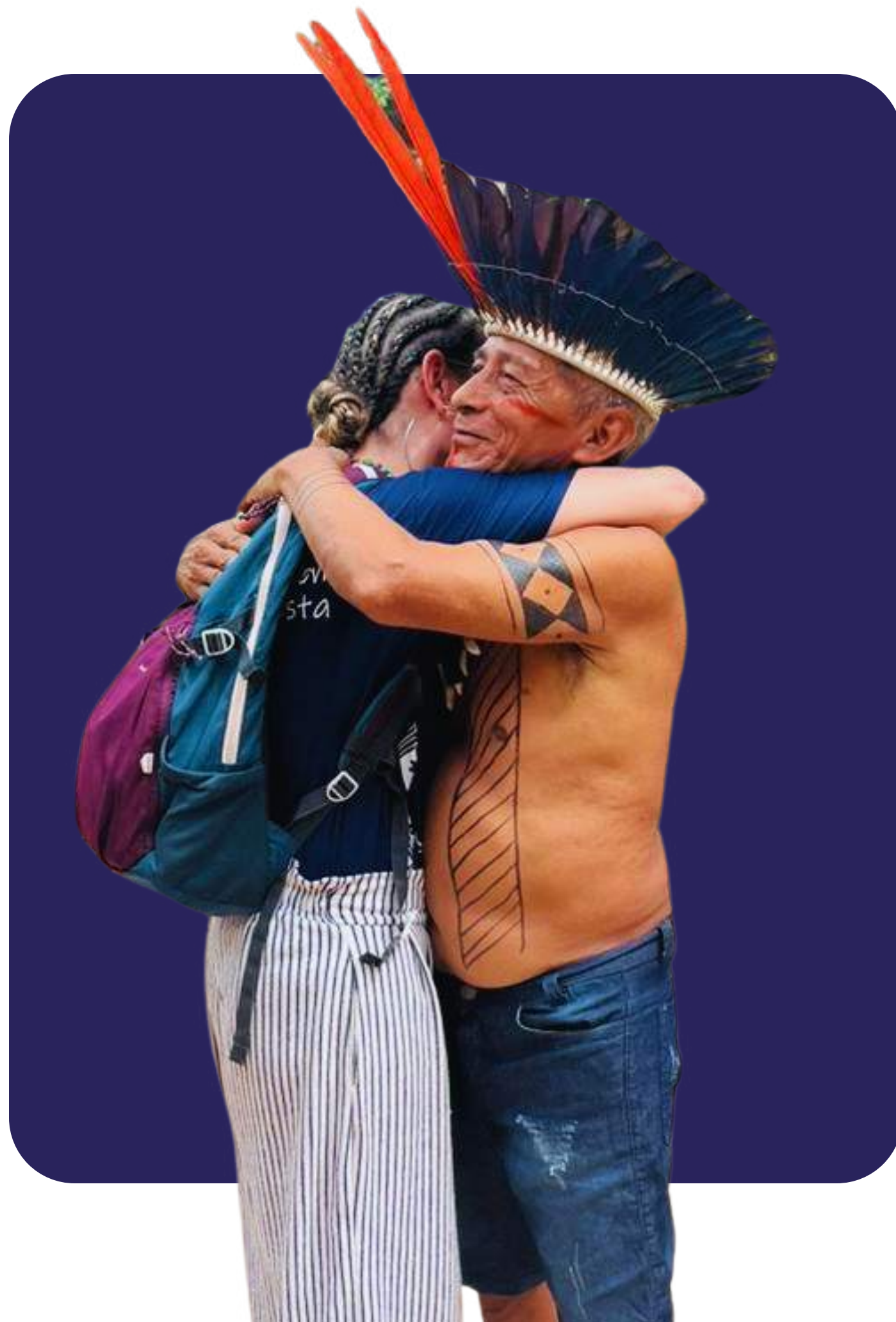




THREE ROOTS EXPEDITION





CARING FOR THOSE WHO CARE FOR THE AMAZON RAINFOREST

Zoé has carried out **34 expeditions** remote regions of the Amazon, mobilising a network of over **300 volunteers**. These volunteers have donated more than **21,000 hours of fieldwork**, bringing hope and care to communities that have often never had access to healthcare services.

We have already provided **over 13,000 medical consultations** directly impacting the **lives of thousands of people** who rely on the forest to live — and who, at the same time, are its guardians.



THREE ROOTS EXPEDITION



28 June to 5 July



OVER 160,000 KM TRAVELLED – ZERO CARBON*

WHETHER BY CAR, COMMERCIAL FLIGHTS... OR EVEN TINY BUSH PLANES!



THAT'S THE EQUIVALENT OF
CIRCLING THE EARTH FOUR
TIMES!



POVO ZOÉ'



**MUNDURUKU
INDIGENOUS
VILLAGE**



**SURGICAL CENTRE IN
BELTERRA**

*WE CALCULATED THE NUMBER OF TONNES IN ORDER TO
PURCHASE CARBON CREDITS.

CONTENT CAPTURE



POVO ZOÉ': A CONNECTION WITH ANCESTRAL BRAZIL:

- Recently contacted community with a deeply preserved culture
- Architecture, traditional games, rituals, and clothing
- Daily life scenes featuring children and elders

Footage must be captured with great sensitivity: every detail reflects the Zoé people's profound identity. Access will be limited to 1 or 2 people.



MUNDURUKU INDIGENOUS VILLAGE: VISUAL AND CULTURAL RICHNESS

- Traditional rituals, dances, and artistic expressions
- Canoe rides through the igarapés (Amazonian streams)
- Body painting, seed collection, and straw weaving
- Traditional clothing adds richness to audiovisual content



SURGICAL CENTRE IN BELTERRA

- Historic town built by Ford
- Samaúma trail – trees up to 120 years old and 70 metres tall
- Latex and local flora production easily accessible
- Surgical centre logistics and patient records
- Opportunity to engage with a riverside community

PRODUCTION

SCENE

TAKE

DIRECTOR

CAMERA


DATE

POVO ZOÉ'

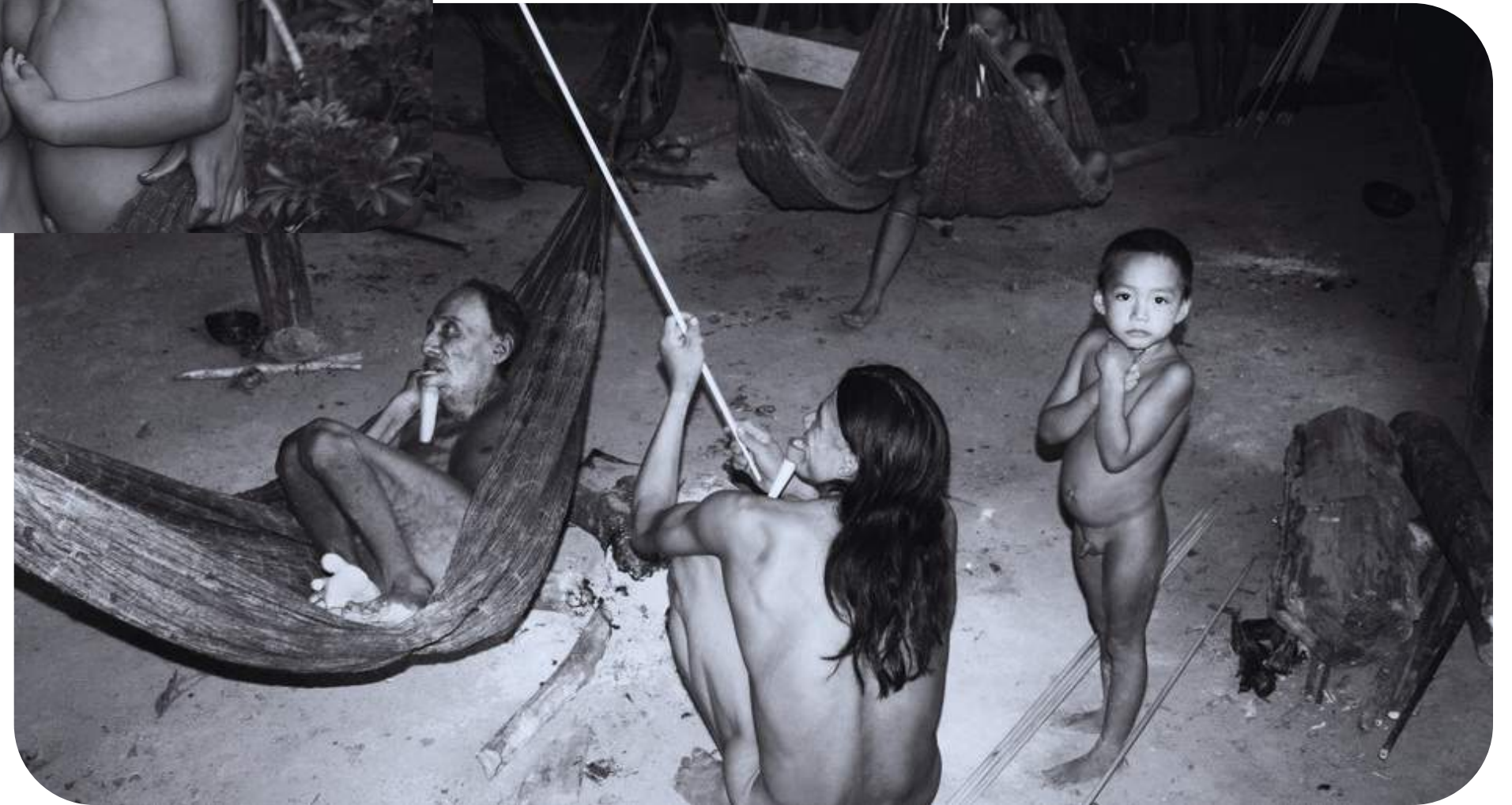
With their **first contact** with non-Indigenous people occurring in the **1980s**, the Zoé live in a state of **voluntary isolation**.

They communicate exclusively in Tupí-Guarani, and any interaction with the outside world poses **significant health risk**, as they lack **immunity to diseases of our civilisation**.

Due to strict access protocols, Zoé will take approximately **5 volunteers** in a **single-engine aircraft** to perform **high-tech surgeries** (laparoscopy) on 5 Indigenous individuals suffering from hernias.



Around 300 Zoé people live in isolation, most wearing a traditional “poturu”, a wooden lip ornament.







With approximately 1,041 inhabitants, the Mundurucu people maintain strong cultural and linguistic traditions.

MUNDURUKU INDIGENOUS VILLAGE

Bragança, Marituba and Takuara

Despite their **rich cultural heritage**, limited access to specialised medical services has led some community members to **migrate to urban areas**, weakening their connection to ancestral lands.

To **support families in remaining** on their traditional territory, we will send a medical team including ophthalmologists, paediatricians, and general practitioners to the three villages to provide care, including ultrasound exams.





SURGICAL HUB

Belterra

In 2022, Zoé **inaugurated its surgical centre** in the town of Belterra, designed to serve surrounding communities. The hospital functions as a **strategic hub**, enabling procedures that would otherwise be unfeasible in remote locations.

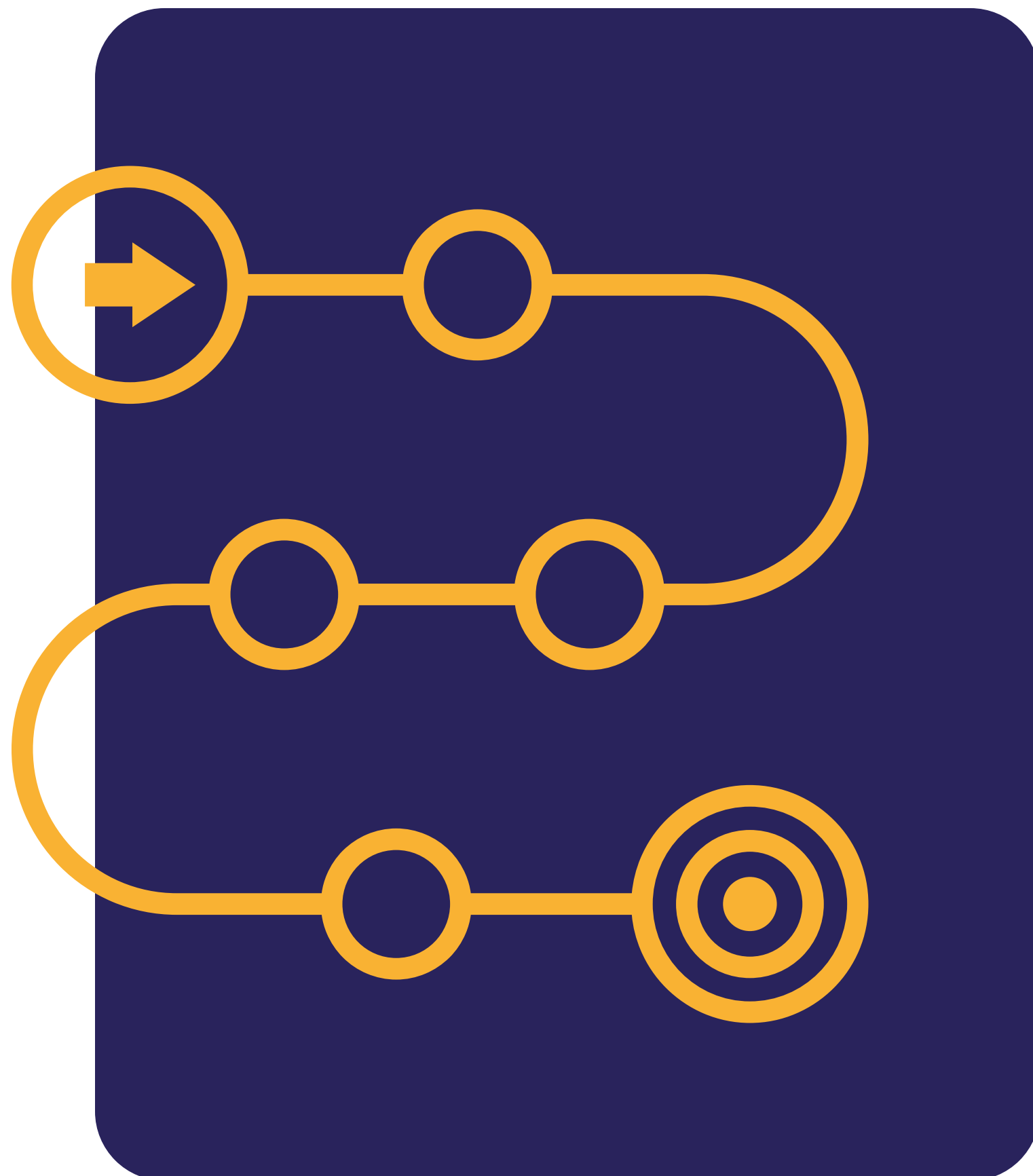
This model **reduces operational costs**, as shown by the surgeries carried out in Zoé communities, which often require disposable materials, difficult-to-access resources, and non-standard logistics.



In addition to Indigenous populations, who are supported by SESAI, Zoé also assists riverine communities.







PLANNED ITINERARY

Part 1

28 June

- Group 1: Arrival in Santarém, followed by ground transportation to Belterra, where the setup of the surgical centre at the hospital begins.
- Group 2: Arrival in Santarém at 2:25 a.m., with departure at 8:30 a.m. in a single-engine aircraft bound for the Zoé village to begin the first surgeries.

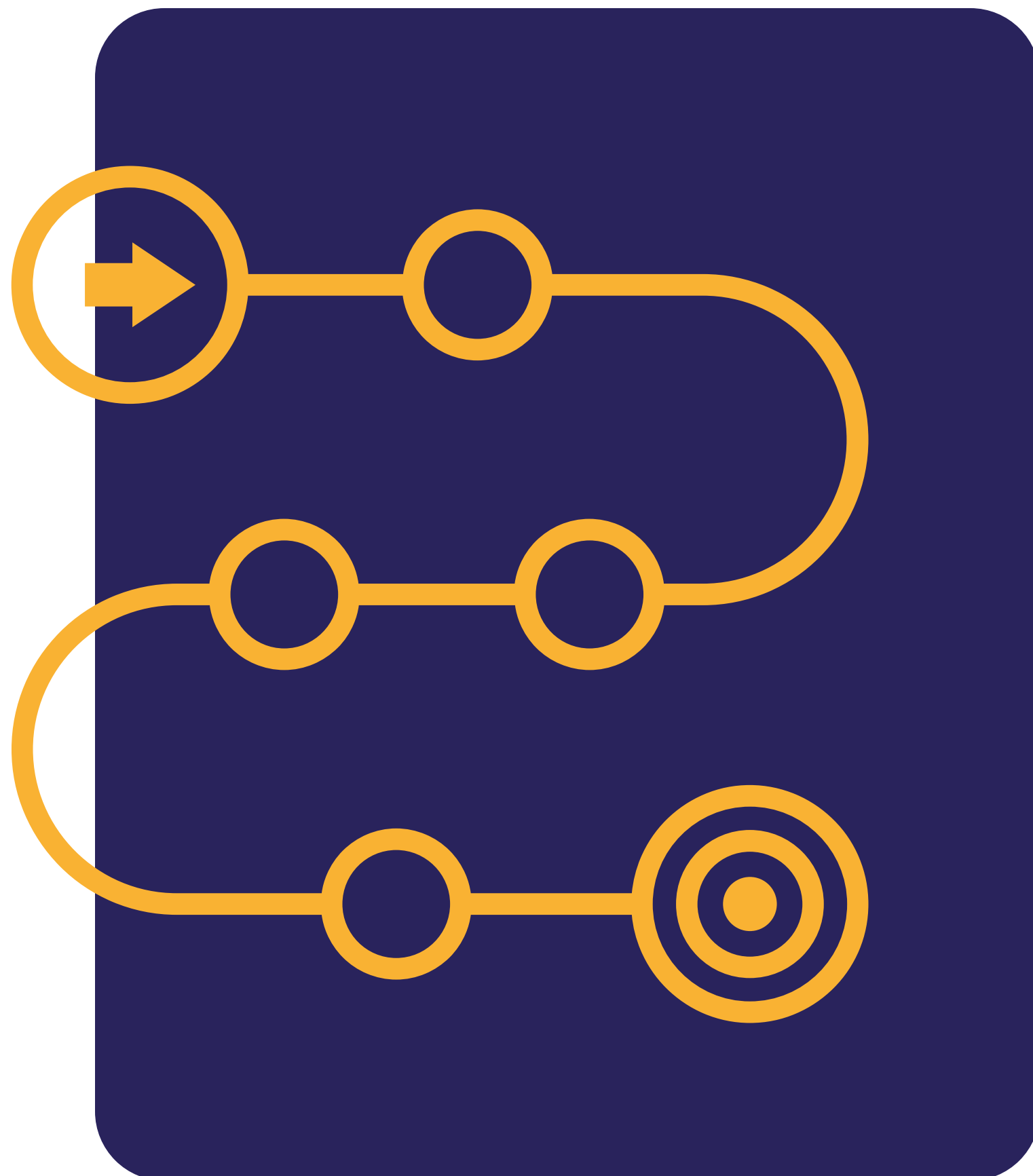
29 June

- Continuation of surgical procedures in the Zoé village.
- In Belterra, the hospital setup continues with the start of patient screenings, initial consultations, and surgical procedures.

30 June

- Return of the team from the Zoé village to Belterra.
- Medical services continue as usual at the hospital.

***This itinerary is subject to change as needed.**



PLANNED ITINERARY

Part 2

01 July

- Continuation of medical services in Belterra.
- Part of the team travels to the Munduruku Village (approximately 3 hours by dirt road) for clinical care and a cultural experience in the evening, including an indigenous ritual.

02 July

- Medical services continue in two groups: one at the hospital and one in the Munduruku Village.
- Cultural activities in the village during the day: canoe rides, hands-on experience with local crafts, straw weaving, and body painting.

03 July

- Final consultations in the Munduruku Village and team returns to Belterra.

04 July

- Preparations for the conclusion of the expedition.

05 July

- Dismantling of the surgical centre and official end of the expedition.

***This itinerary is subject to change as needed.**



***This itinerary is subject to change as needed.**

SCHEDULE: BELTERRA

28 June

- Arrival of the team in Belterra, Pará, and setup of the surgical centre.

29 June

- Hospital services begin with patient screening and initial consultations.

30 June

Continued consultations and surgical procedures.

01 July

- Continued consultations and surgeries.

02 July

- Continued consultations and surgeries.

03 July

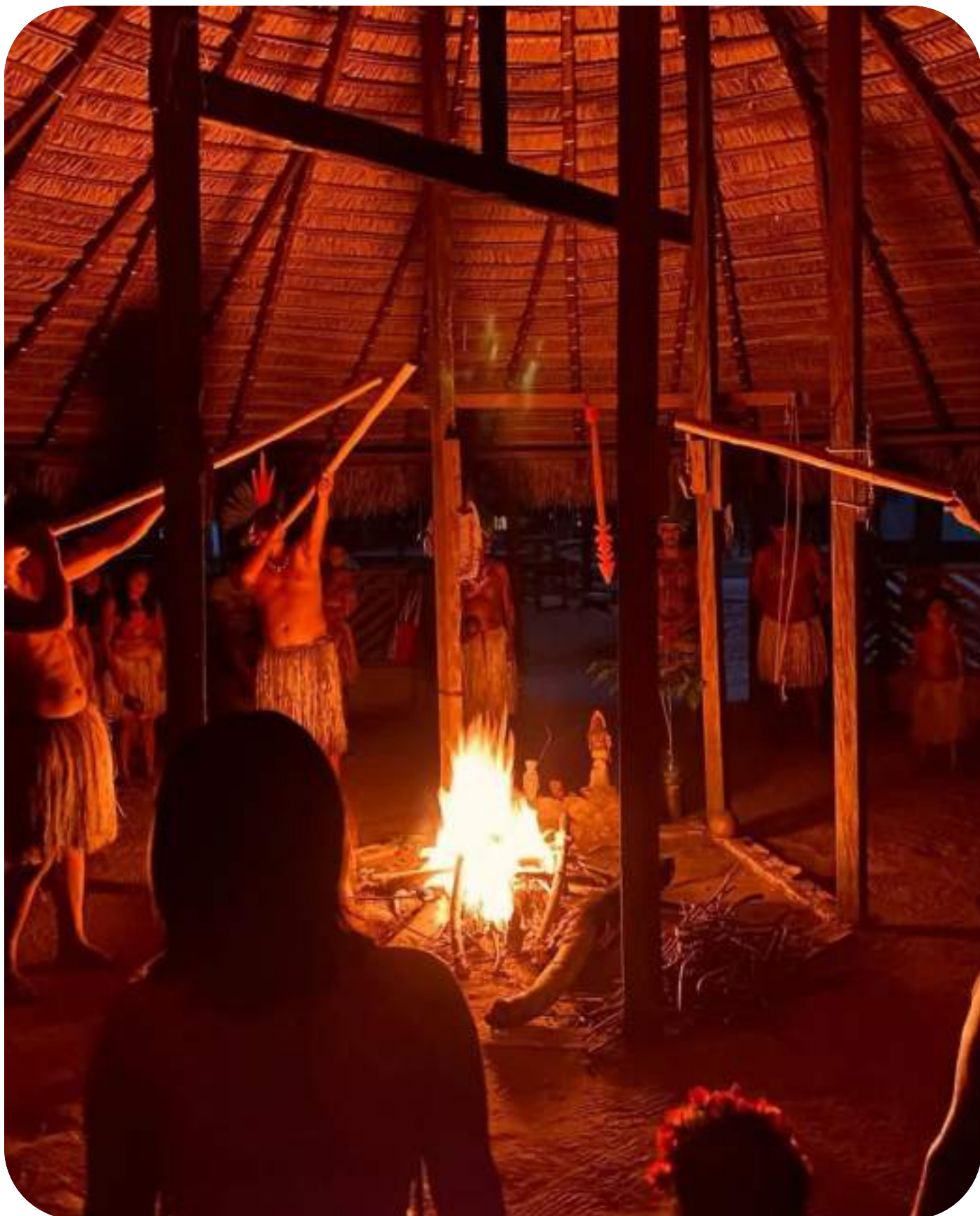
- Continued consultations and surgeries.

04 July

- Start of the hospital dismantling process.

05 July

- Complete dismantling of the hospital and official closure of the expedition.



SCHEDULE: ALDEIAS MUNDURUKU

01 July

- A group from the team will travel to Bragança Village (approximately 3 hours by dirt road). Clinical consultations will take place throughout the day, followed by a cultural experience at night, including an indigenous ritual. The surgical team will remain at the hospital.

02 July

- In the morning, there will be a canoe trip, hands-on activities with local crafts, straw weaving, and body painting in the village. Later, the team will visit Marituba Village (15 minutes away by car) for further medical consultations.

03 July

- The team will travel to Takuara Village (30 minutes by car) for additional clinical consultations.

***This itinerary is subject to change as needed.**



SCHEDULE: POVO ZOÉ'

28 June

- The team arrives in Santarém at 2:25 a.m. At 8:30 a.m., they depart on a single-engine aircraft bound for the Zoé People's territory. Upon arrival, the surgical centre is set up and two surgeries are performed.

29 June

- In the morning, the team visits the village and a nearby waterfall. Time is allocated to experience and explore the community. The surgeons perform three surgeries.

30 June

- Post-operative consultations with the five patients who underwent surgery. Afterwards, the team returns to Santarém by single-engine aircraft and continues by land to Belterra. There, they join the rest of the team to begin consultations at the hospital.

***This itinerary is subject to change as needed.**

2 Nurses

Provide care and support to patients at every stage of the consultation process.



2 Paediatricians and 1 Geriatrician

Care for both the youngest and the elderly, ensuring support across all life stages.



5 Surgeons

Responsible for life-changing surgical procedures in hard-to-reach locations.



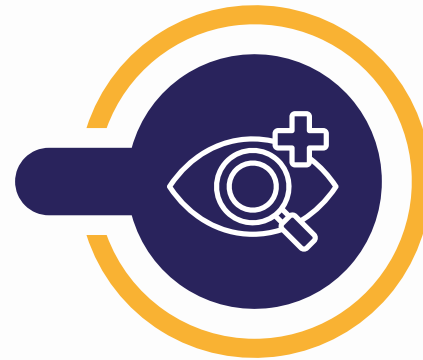
3 Anaesthetists

Enable safe and precise surgeries in remote regions.



2 Ophthalmologists and 1 Optical Technician

Conduct eye exams, provide consultations, and distribute glasses to those in need.



2 Gynaecologists

Offer consultations and surgeries in one of the areas with the highest maternal mortality rates in Brazil.



5 Dermatologists

Diagnose, treat, and perform minor surgeries, especially for skin cancer.



4 Academics

Accompany the team to learn, document, and contribute to research and innovation.



2 Ultrasonographers

Provide exams that assist in prevention and early diagnosis.



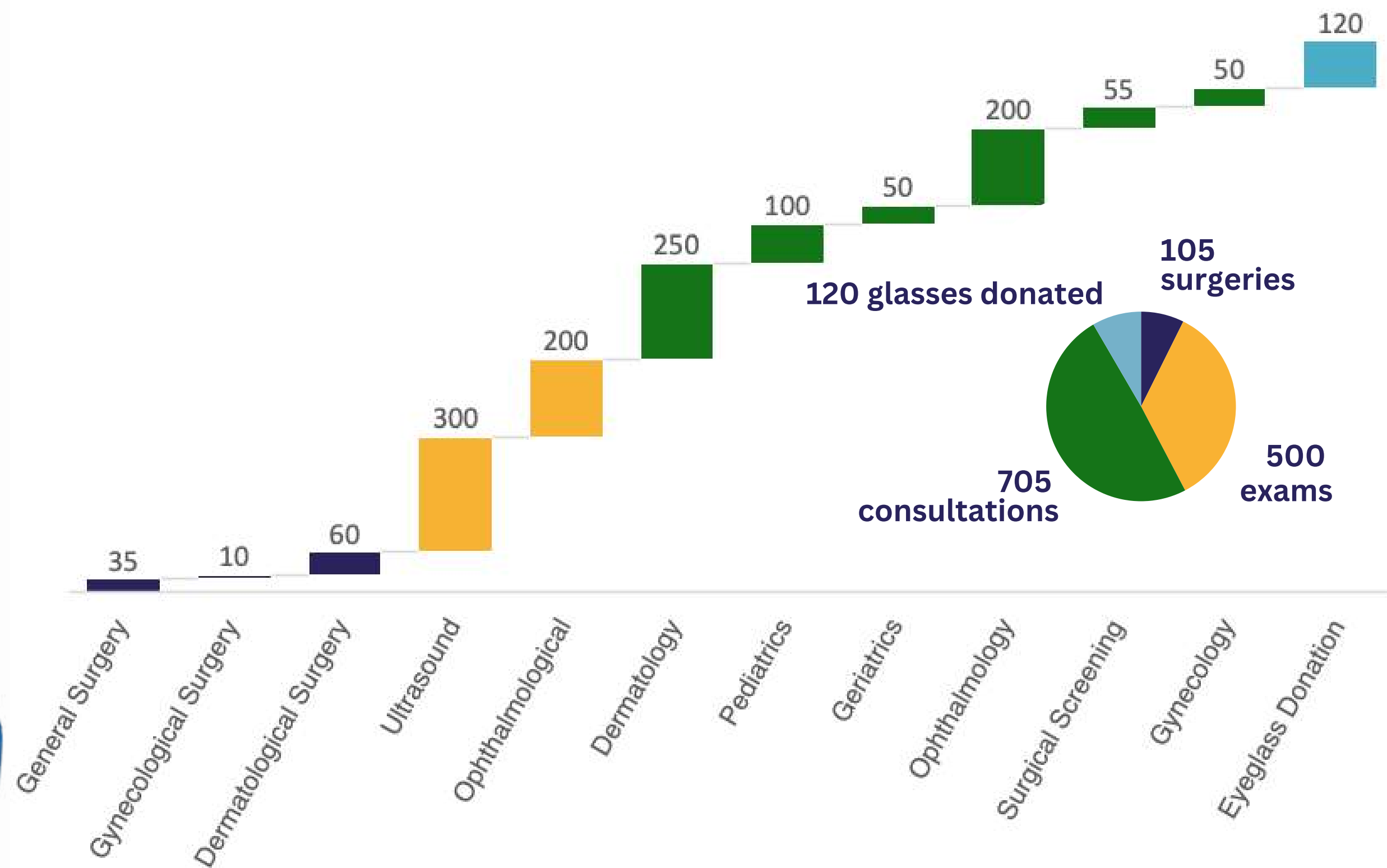
8 Support Professionals

Handle logistics, communication, and coordination — making the entire mission possible.



36 VOLUNTEERS, 1 MISSION: CARING FOR THOSE WHO CARE FOR THE FOREST

1.410 EXPECTED CONSULTATIONS



*Preliminary data subject to change

HALF A TONNE OF EQUIPMENT

TRANSPORT OF EQUIPMENT AND SUPPLIES

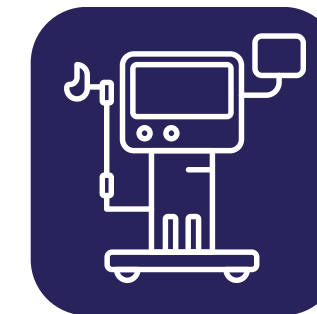
Transporting half a tonne of equipment and supplies for the expedition is no simple task – but we're used to it.

The difference this time is that, thanks to a donation from Johnson & Johnson, we'll be bringing mobile and disposable surgical equipment to operate in the Zoé territory.



SUPPLIES

Disposable gloves, surgical masks, dressings, medication, disposable needles – and much more!



EQUIPMENT

Anaesthesia carts, laparoscopy towers, ultrasound machines, eye exam devices, and other essential tools.



PARTNERSHIPS THAT MAKE THE PROJECT HAPPEN

This project is only possible thanks to the collaboration of strategic partners committed to health, sustainability, and the preservation of the Amazon.

MIGUEL GIANNINI OPTICAL

Donation of eyeglasses to local communities

DIETER MORSZECK FOUNDATION

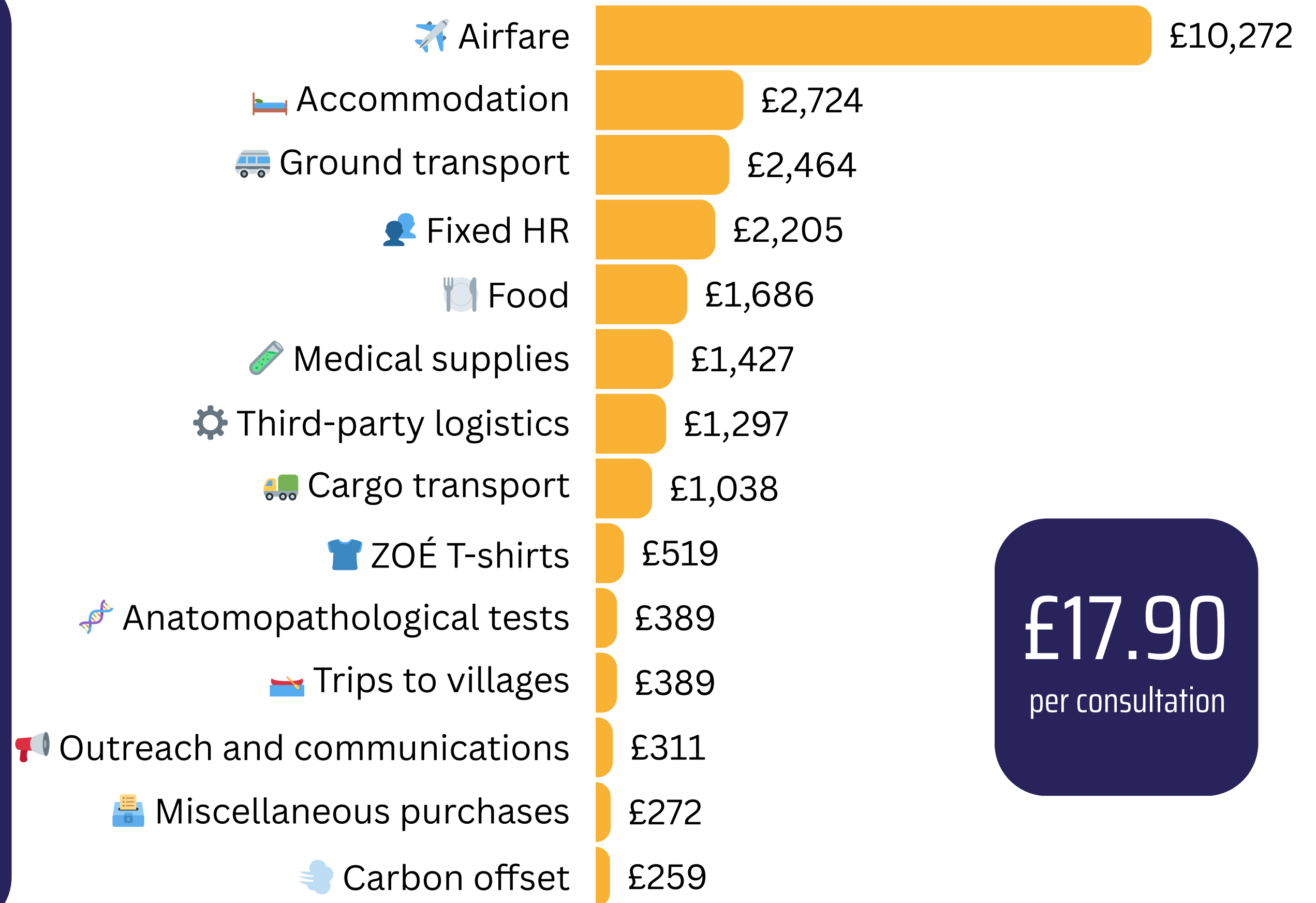
Air transport to the Zoé Village via single-engine aircraft

MINDRAY

Loan of high-quality surgical equipment

... AND 15 OTHER PARTNER ORGANISATIONS

**TOTAL
ESTIMATED
BUDGET:
£ 25.252**



£17.90
per consultation

Exchange rate used: 1 BRL = 0.1297 GBP (14 April 2025). Values are approximate and subject to exchange rate fluctuations.

THREE ROOTS
EXPEDITION

