



MANDE REKORÄ

(WE FIGHT FOR OUR WAY OF LIFE)

**COMMUNITY CARE AND
REPARATIONS PROGRAMS**



GAYLATINO
RED POR LA IGUALDAD DE DERECHOS

PROGRAMS GOALS

- To adapt the organization's overall operation, increasing its sustainability and independence.
- To reduce and address the effects of the damage caused by discrimination against LGBTI+ communities.
- To contribute to the reduction of the community viral load of HIV and other STIs.





WHY "ÑANDE REKORÃ"?

The "Ñande Rekorã" programs were developed in response to the multiple crises faced in the context in which we currently live. Inspired by the wisdom of our culture, the programs seek to create spaces that enable us to implement the concepts included in the "reko" from the "Guarani" way of feeling/thinking.

"Ñande Reko should be understood as the meaning given by Montoya in his Tesoro de la lengua guaraní-Treasure of the Guarani language- (1639): way of being, way of being oneself, a system, a law, a culture, a norm, a behavior, a habit, a condition, a custom. In this vision we find the essence of his understanding of quality of life" (Meliá, 2002)

Organizing ourselves around our development as a Guarani "reko" enables us to structure new programs aiming at implementing principles of mutual support in solidarity, in the face of situations of violence towards our individualities and communities in a context of joint pandemics. We seek to promote, incorporate and sustain more care practices at different levels, from the individual to the collective, oriented in the Guarani practices of potirõ to aguyje.

Through these programs, and with the support of the GayLatino Network, SOMOSGAY aims to contribute, to the building of a sustainable society by offering solid alternatives for action in the face of the emergency to create new social agreements without oppression or violence, with an emphasis on supporting the most vulnerable communities and people.



ARANDU REKAVO

(SEARCH FOR WISDOM)

COMMUNITY EDUCATION PROGRAMS

ARANDU REKAVO promotes knowledge, supporting initiatives with educational emphasis, such as through the creation of pedagogical material.

ARANDU REKAVO also conducts the permanent popular education program, carrying out cultural exchange courses and supporting activities such as:

- Sustaining a publishing press for the publication of books, drawing up manuals addressing sexual diversity; it also teaches about the editorial process.
- Establishing community institutes for permanent training at different levels.
- Building and providing support to trade schools.
- Providing permanent professional training such as courses, seminars, etc.
- Providing pedagogical support for students at various levels.
- Managing and establishing a scholarship program to support the communities.
- Facilitating permanent training spaces that promote a culture of equality.
- Training regarding epistemological perspectives of decolonization and anti-racism in different sectors.



ATYHÁ

(A SPACE TO MEET UP)

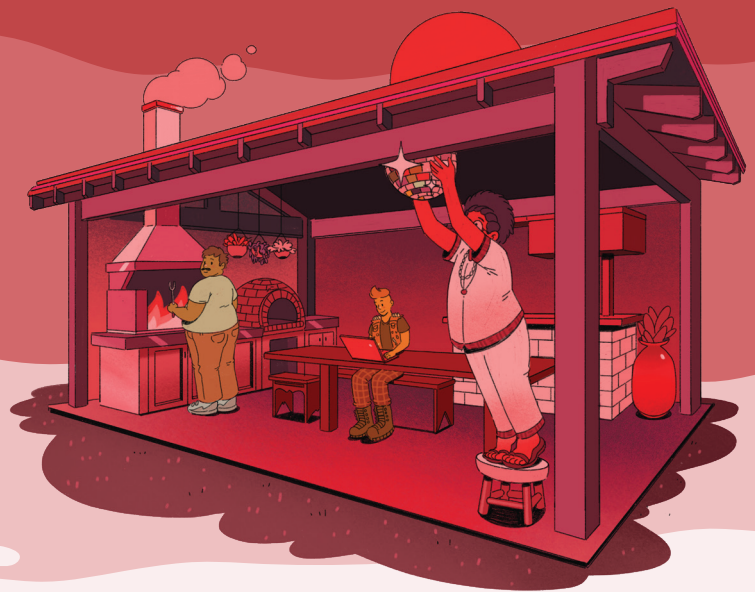
LOCAL ACTION COMMITTEES

The program aims at creating local community participation units, which may be able to coordinate and promote participation, action and program management in their nearby territories. The establishment and operation of local action committees are fostered, which assemble and provide services to the community at the territorial level.

ATYHÁ will support activities such as the following:

- Creating, operating and extending local committees for community management of services.
- The promotion of training in democratic governance and good participatory leadership practices at the community level.
- Strengthening of community political participation at various levels.
- Collective promotion of human rights at the local level.
- Strengthening local capacities for transparent management, accountability and access to information at the community level.
- The promotion of community spaces for reflection and analysis.





ARETERĂ

(ABUNDANCE)

FAIRTRADE COMMUNITY NETWORK

The program aims to support the strengthening of exchange networks as well as the development of informal trade that promotes the community economy, involving micro-producers, their families and communities.

It supports the "TAÚ Bar and Culture" initiative, a cooperative enterprise and community entertainment space.

ARETERĂ supports communities by adopting an alternative trade system, ensuring community development and supporting activities such as:

- The development of IT tools to connect production and consumption communities.
- The creation of economic incentives to producers to establish small enterprises.
- The provision of access to management and marketing tools.
- The establishment of informal trade networks with food suppliers.
- Access to training and employment opportunities for communities.

AYVÚ

(THE POWER IN EACH PERSON)

COMMUNITY MANAGEMENT

The AYVÚ program incorporates all the technology development projects based on factual information. It provides community management systems and communication apps such as TUAMI.org.

AYVÚ provides secure platforms for peer-to-peer information exchange and intends to be an intelligent system used to monitor progress and evaluate the results of actions and supported projects. The program supports activities to:

- Develop IT tools for decentralized management.
- Encourage a culture of accountability and information transparency.
- Promote permanent training for community management of programs and projects.
- Promote information technology training for the communities.
- Support permanent training regarding ICTs at all levels.
- Support the implementation of management systems at the community level in peer organizations.
- Monitor data on public institutions and promote community participation in that process.





GUÁRA **("THE REAL/AUTHENTIC THING")** **IMPROVEMENT OF COMMUNITY** **ENVIRONMENTS**

Together with Tekoha, GUÁRA prioritizes the recovery of heritage buildings and the improvement of community center environments, promoting the restoration of ecosystems and the enhancement of community and thus moving infrastructure towards sustainability, adding services to local communities. It also encourages the design of environmental improvement projects at the neighborhood level.

It supports activities such as:

- The installation of community centers in buildings of heritage value.
- The strengthening of local communities with regards to their management capacities.
- The promotion of urban design, architecture and landscape community workshops.
- The provision of support for interventions to improve blocks, neighborhoods and environments.
- Promotion of the participation of LGBTI+ people in places/events/spaces related to urban planning, landscaping and land management.
- Support for local permaculture actions.

IRŪ (ALLY)

LEGAL DEFENSE AND LITIGATION

IRŪ is the community advocacy and legal support program. It follows and systematizes representative cases in addition to providing legal assistance in other matters.

IRŪ seeks to provide direct support to communities, defending human rights, especially in the judicial sphere. It supports initiatives for:

- The provision of assistance in rights-violation cases by the State.
- The provision of legal consulting services at the community level.
- The provision of assistance and defense in representative cases before the national and international legal systems.
- Research and documentation tasks.
- The monitoring of standards and legislative initiatives that threaten the human rights and autonomy of LGBTI+ communities.





JAHA TAPERE **(FOLLOW THE ROAD)** **COMMUNITY TRANSPORTATION**

The program seeks to create decent work through transport and delivery cooperation managed by members of the community. It provides transportation services to the Tekoha, as well as Karu Porā's delivery service, Aretērā collection and also offers tourist transportation services in different ways.

It supports activities aimed at:

- Providing assistance for community tourism with a focus on environmental respect and sustainability.
- Constitution of transport cooperation (cab, cargo transport and delivery) in the communities.
- Promoting the creation of transportation lines managed by the community.

KARU PORĀ

(HEALTHY FOOD)
COMMUNITY FOOD

The program aims to relieve hunger, promoting sustainable access to healthy food to our communities. It supports community kitchens and canteens in the Tekoha, encourages food production in the Guára and is supplied in cooperation with the Areterā program.

KARU PORĀ provides the necessary food to the community and seeks to strengthen their skills. The following types of activities are supported:

- Community food production and distribution initiatives, at urban, interurban and rural levels.
- Support for community kitchens in vulnerable territories.
- Cooperative promotion of sustainable production of healthy food, with emphasis on "food deserts".
- Support for initiatives that facilitate access to food security, focusing on vulnerable territories.





OTHER CONSIDERATIONS

Finally, it should be highlighted that these reparations and care programs look to offer solid alternative activities which contribute to the building of more resilient communities, using technology that stimulate lifelong learning and explore a model that has as its vision "a world in which many worlds fit". Bearing in mind the countless colonial constraints, a deep community transformation is proposed.

The tekoporã (good living avá Guaraní) inspires this system and its programs. In this new phase, SOMOSGAY embraces our ancestral community roots, envisioning a society that celebrates our diverse existences and projects them towards a new ancestral future.



KATÚ

(POSSIBILITY, KA IS THE STATE OF BEING)

COMMUNITY EVENT INFRASTRUCTURE

The program supports community event production activities, providing infrastructure support, training and distribution. It shall also provide support for measures that include:

- Training in event and performance production.
- Creation and support for audiovisual creation schools.
- Support for the creation of professional cooperatives in the area.
- Support for community artistic initiatives with production infrastructure.
- Encouragement of the cultural events management.
- Support for the participation of community artists in domestic and international cultural events.

KUAA

(KNOWLEDGE)

INFORMATION TO CHANGE COMMUNITY

KUAA conducts community research, operating in support of the Arandu Rekavo library.

Each KUAA action will create scientific data and policy planning from the community, with activities that include:

- Support for research led by LGBTI+ communities.
- Support for the formation of teams that seek to innovate in the production and management of knowledge in the community.
- Support for the creation and maintenance of analysis and reflection groups in the LGBTI+ communities.
- Support for communities in the spread of ancestral knowledge.
- Training focused on the usage of scientific data and evidence.
- Support for the creation of community libraries.
- Theoretical and practical support for professionals who wish to work on issues which are related (or of interest) to LGBTI+ communities.
- Establish and support collaborative relationships between knowledge centers and the LGBTI+ communities.
- Encourage the creation of evidence that supports decolonial and anti-racist perspectives and their use in the design and implementation of public policies.





KUNU'U **(CARE)** **COMMUNITY HEALTH AND WELLBEING**

The KUIMBA'E clinic forms part of the KUNU'U program, offering medical clinic services, STI testing, treatment and therapeutic follow-up, specialized HIV counseling, mental health services, comprehensive support for transgender people and nutrition/healthy eating in collaboration with the Karu Porā program.

KUNU'U tackles initiatives related to community health in activities such as:

- Mental health support in the face of crisis situations and violence.
- Therapeutic mental health support.
- Support for the creation of comprehensive community health services.
- Access to STI testing and treatment, including HIV and viral hepatitis.
- Support for nutrition and healthy eating programs.
- Support for widespread access to antiretroviral treatment.
- Support for pharmacy services and community clinics.
- Support for the establishment and sustainability of community points-of-care.
- Support for counseling and therapeutic mental health support programs.

TÁVA

(SETTLING)

COOPERATIVE HOUSING PROGRAM

The TÁVA program aims to encourage community solutions for the defense of housing and landscape rights, recovering ancestral values in our relationship with the land and the environment through the LGBTI+ communities.

For this reason, through TÁVA we strive to promote the formation of sustainable communities in the territories where the program is implemented, with actions that include:

- The formation of common housing cooperatives in the community.
- The construction and maintenance of cooperatively managed buildings for housing, shelter and community services.
- The acquisition of community-managed real estate, expanding shelter and housing programs in doing so.
- The promotion of the design of urban projects and actions with ecological infrastructure, supporting the formation of architectural and urban design workshops in the communities.
- Actions aimed at improving housing conditions in the communities.
- The promotion of housing and landscape rights as human rights.





TEKOHA **(PLACE OF BEING)** **COMMUNITY CENTERS**

The program supports the installation of community centers with their services in the territories supported by the Atyhá program. It supports cultural and community initiatives, in addition to the clinic and shelter.

The program supports activities such as:

- The establishment of self-managed cultural centers.
- The formation of community farms in both the city and countryside, together with the Areté program.
- The establishment of gardens, orchards, community kitchens and soup kitchens managed through Atyhá.
- Training in sustainable food production.
- The implementation of transitional shelters with health services from the Kunu'u program.
- The management of physical spaces for libraries, trade workshops, audiovisual production spaces and community classrooms.

WATÁ

(WALK)

COMMUNITY MULTIMEDIA

This program supports creative spaces (audiovisual production centers, libraries, recording studios). It is especially aimed at community creators, enabling technological access and creating new forms of artistic expression.

WATÁ seeks to promote the creation of LGBTI+ content through podcasts, videos, music and performances in photography, design and visual arts, focusing on text and its versatility. It also supports the production of community intellectual property.

The program seeks to support initiatives related to multimedia material development (print publications, television, radio, internet), conducting and supporting activities such as:

- The production of podcasts, social network content, websites, infographics, magazines etc.
- The development of sustainable communication plans.
- Provision of support for production companies in creating content from and for the community.
- Provision of support for talent schools: acting, photography, screenwriting.
- Campaign production.
- Provision of support for community media.



JOIN ÑANDE REKORÃ



WWW.SOMOSGAY.ORG/NANDEREKORA
MORE INFO AT: (+595986) 173 200



NANDE REKORÄ

