

Dear Global Giving members

I am Eduardo Lins Henrique, Chief Marketing Officer of Karimu International Help Foundation (karimufoundation.org). We work in the rural communities of the Manyara Region, Tanzania. Our mission is to eliminate poverty by using a community driven approach to address the key challenges that those who lack resources and agency face: lack of clean water and sanitation, quality education, health care, income and financial services.

We are a registered 501(c)(3) charity with a federal tax ID of 32-022795 in the USA, and also we have a local partner in Switzerland called Soquential AG, Zurich that also makes it possible to give tax credit.

Our intention with this request is to start a relationship with your foundation, build trust, and then plan together bigger steps. We are requesting a small but extremely important contribution to finish our school's toilets project in Arri Ward.

Introduction:

Karimu relies on close relationships with members of the Ayalagaya and Arri communities — relationships that we began developing fifteen years ago — to draw upon the people's collective wisdom so that jointly we can identify and invest in high-impact sustainable projects benefiting the entire community. Our community-driven model has strikingly transformed the lives of Ayalagaya Ward's fifteen thousand residents, and among the twenty-five thousand residents of neighboring Arri Ward, where we started working more recently, we are beginning to see comparable results.

In this brief introduction I can only hint at the diverse ways in which Karimu has impacted <https://www.karimufoundation.org/what-we-do/our-impact> the communities where we work. We already took 15,000 people out of extreme poverty in Ayalagaya ward and now we are expanding our methodology to Arri and Dabil Ward, to impact an additional 45,000 people living in extreme poverty.

Our methodology uses a holistic approach on 5 pillars: sanitation, education, health, financial services and income generation. We choose one region and go deep on this method for 5 to 10 years. After this, the community will be out of extreme poverty, self sustainable and self maintained. Each cycle in each community of 15,000 to 20,000 people costs around \$5 million USD. With \$333 USD per person (average) we change their destiny forever in a sustainable way.

I must mention the construction of two health clinics, and a health center that has been recognized by the Tanzanian government as best in the region. Karimu has constructed modern restrooms with flushable toilets and faucets with running water for each of Ayalagaya Ward's seven schools along with reconstruction and expansion of other school facilities. In addition, we

implemented the training of a large number of savings groups to bolster financial security and facilitate microlending, and the investment in two different water projects to ensure that no Ayalagaya or Arri household is more than five hundred meters away from access to ample clean water supplied at no charge — these water projects having produced the startling impact of enabling girls to devote to their schoolwork an average of four more hours per day than had previously been available.

The success of these projects is a testimony to the communities' dedication, and the high-level of efficiency that Karimu adheres to as we insist that no one outside of Tanzania earns a salary. Our fifty volunteers from sixteen different countries work for free. This means that 97.6% of all donations go directly to Tanzania. Karimu's 2023 Annual Report details our level of efficiency and transparency. <https://www.karimufoundation.org/annual-reports>

Our Communications Team of volunteers created this inspiring video to show our impact: <https://www.youtube.com/watch?v=KtRziXmajco>

Although we have expanded greatly in the last fifteen years, we have never wavered from the principle that listening to the community because they know better than anyone on the outside knows how to solve their problems and issues. Out of respect for their dignity and voice, our job is to work as partners and act as facilitators who can provide resources.

Whatever project we implement is always a priority set by key stakeholders in strategic meetings. And in all areas, we look at the whole system, as opposed to a part. For only in this way can true independence and sustainability be attained. For example, in the area of education we not only build classrooms but we provide clean modern bathrooms to reduce disease and provide privacy for girls during menstruation. In addition, we have had successful programs in promoting the importance of education among parents, and professional development and computer training for teachers.

The project:

Clean and Safe Sanitation for Schoolchildren in Arri Ward, Tanzania (Africa)

Karimu knows that investing in improved sanitation at schools makes a difference in a child's health, education, and future. Every child has the right to a quality education which includes access to clean water and toilets at school. Children spend a significant portion of their day at school where sanitation facilities have a significant impact on their learning, health and dignity.

Karimu builds state of the art, clean bathrooms for the entire school community. Additionally, our bathrooms support girls managing their menstrual hygiene by providing:

- Free access to sanitary supplies at school
- A private area for washing and drying clothes
- An incinerator connected to the girls' bathroom to properly dispose of hygienic waste
- A private shower

Arri Ward consists of seven primary and two secondary schools. Karimu has already built bathrooms and washing sinks in three of the primary schools and both secondary schools. In 2025, our goal is to complete the bathrooms at the remaining four primary schools (Endasago, Dudiye, Arri, and Tsaayo), this will allow us to shift our focus to improving education in 2026.

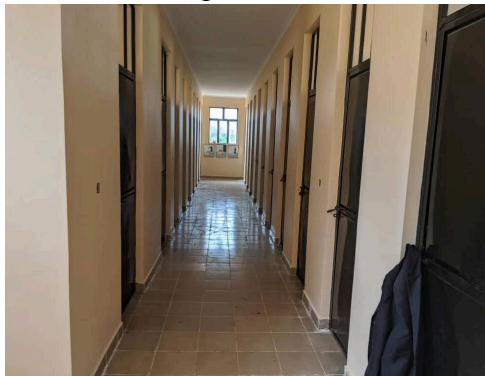
As you know, improving education without first addressing sanitation issues, such as clean water and proper bathrooms, has little impact, as both students and teachers frequently fall ill which leads to low attendance. Furthermore, addressing education in some schools while others still face poor sanitary conditions is not cost-effective. For these reasons, completing bathroom construction in 2025 at all remaining primary schools in Arri is critical.

Here are examples of school bathrooms in Arri:





This is an example of Karimu school bathrooms.



Girls' bathroom



Boys' bathroom

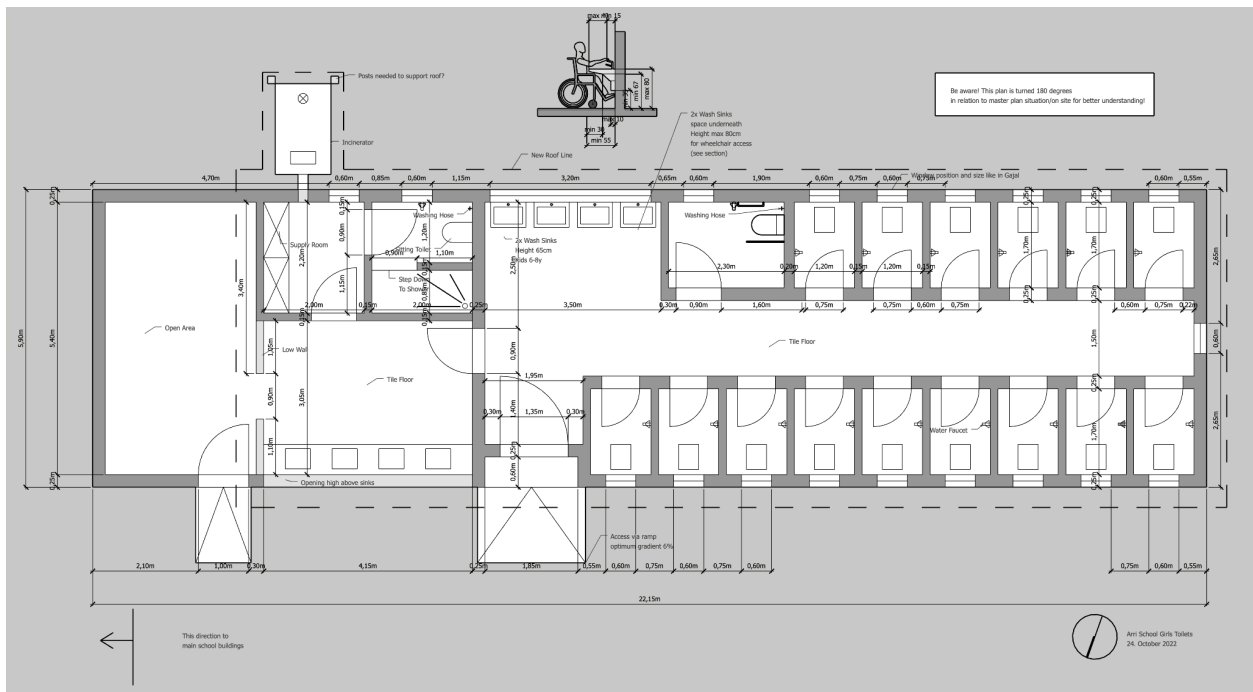
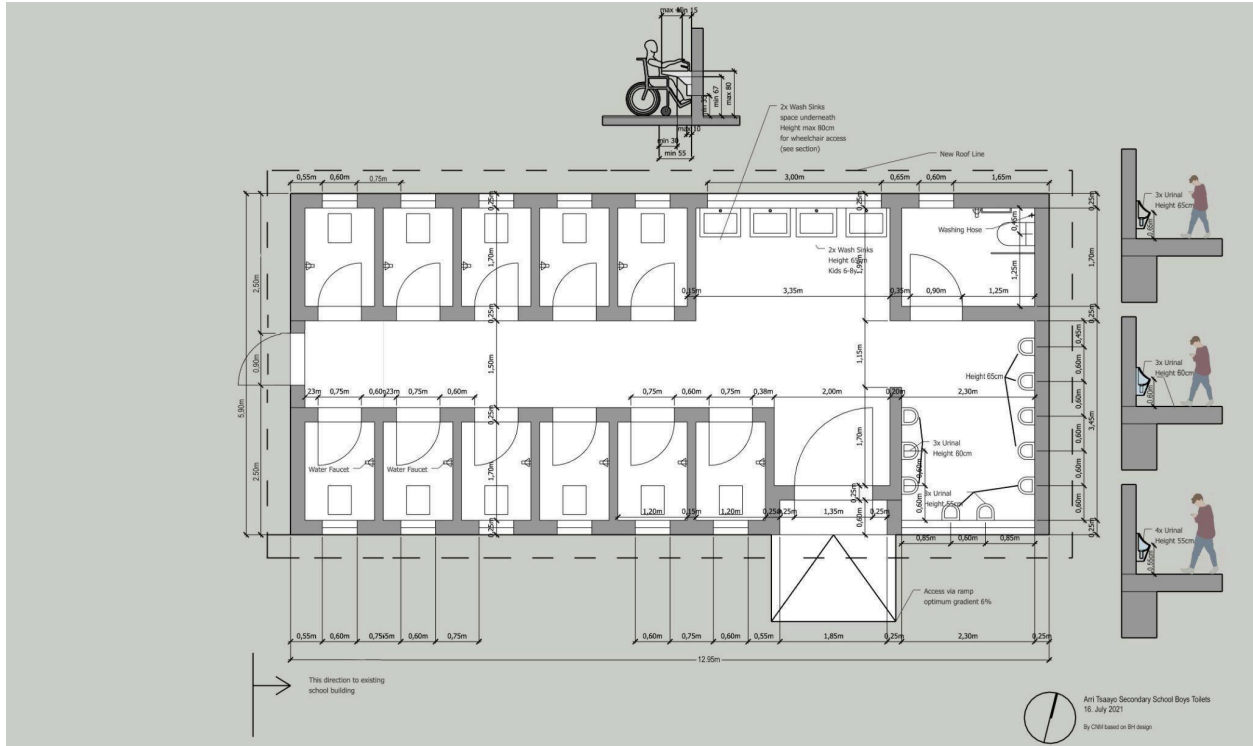


Disabled stall

Karimu tracks and publishes the reports publicly about our projects on our [school dashboard](#).

<https://lookerstudio.google.com/u/0/reporting/d1ce8366-65b4-455c-a2a1-b4d57d9cf15f/page/dV55B>

These are the floor plans for the bathrooms:



Construction time: 125 working days (based on previous projects)

These are the main costs structure for the project (in USD):

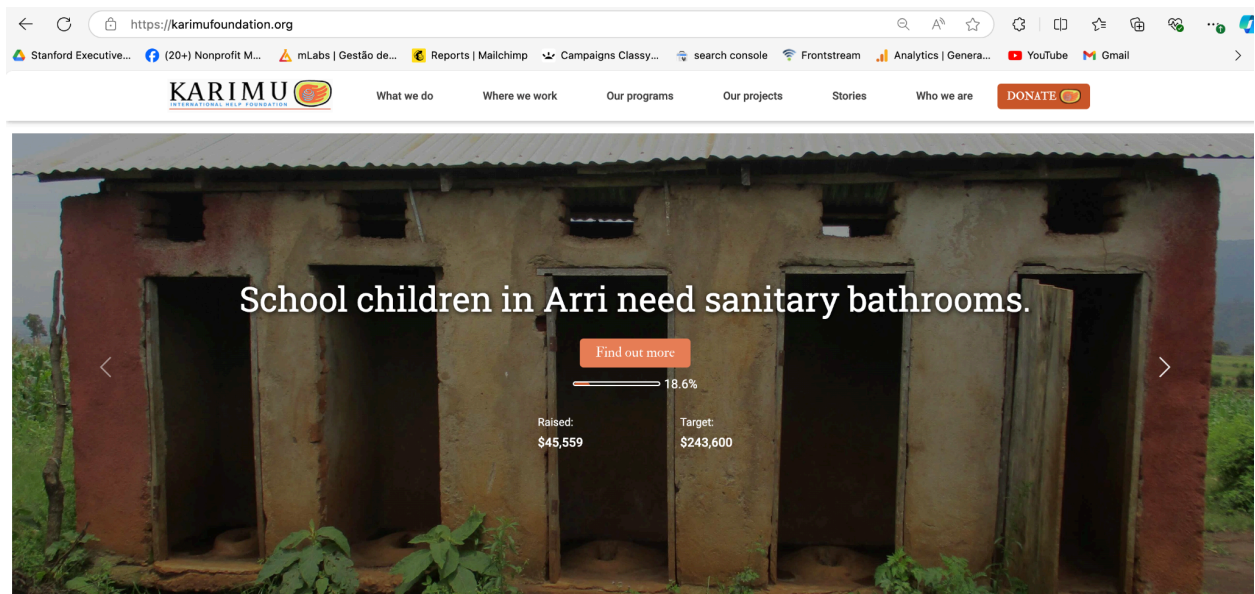
Total cost: \$317,500 USD

Already executed in 2024: \$73,900 USD

Fundraising goal for 2025: \$242,600 USD

Funded until now for 2025 (nov 26th 2024): \$45,559 (see realtime report in our website)

Funding gap: \$198,041 USD



Project	Total Cost	Cost per unit	Total Units Needed	Funding Needed
Construction of all remaining bathrooms needed at Arri Schools	\$317,500			
Construction of bathrooms and washing sink at	\$65,700			

Endasago Primary School				
One washing sink with mirror		\$200	8	\$1,600
All hygiene paintings in all bathrooms		\$500	1	\$500
Incinerator (to burn health razor material such as menstrual pads)		\$400	1	\$400
Bathroom stall with flush toilet and faucet for washing		\$1,000	14	\$14,000
Construction of handwashing sink		\$1,200	1	\$1,200
Construction of 1 teachers' bathroom		\$7,000	1	\$7,000
Hygiene facilities for menstruating girls (private toilet with shower, access to menstrual pads, incinerator, and enclosed area to wash and dry clothes)		\$6,000	1	\$6,000
Complete boys bathroom		\$15,000	1	\$15,000
Complete girls bathroom		\$20,000	1	\$20,000
Construction of bathrooms and washing sink at Dudyie Primary School	\$70,700			
One washing sink with mirror		\$200	8	\$1,600
All hygiene paintings in all bathrooms		\$500	1	\$500
Incinerator (to burn health razor material)		\$400	1	\$400
Bathroom stall with flush toilet and faucet for washing		\$1,000	19	\$19,000
Construction of handwashing sink		\$1,200	1	\$1,200
Construction of 1 teachers' bathroom		\$7,000	1	\$7,000
Hygiene facilities for menstruating girls (private toilet with shower, access to menstrual pads, incinerator, and enclosed area to wash and dry clothes)		\$6,000	1	\$6,000
Complete boys bathroom		\$15,000	1	\$15,000
Complete girls bathroom		\$20,000	1	\$20,000
Construction of bathrooms and washing sink at Arri Primary School	\$68,700			
One washing sink with mirror		\$200	8	\$1,600
All hygiene paintings in all bathrooms		\$500	1	\$500
Incinerator (to burn health razor material)		\$400	1	\$400
Bathroom stall with flush toilet and faucet for washing		\$1,000	17	\$17,000

Construction of handwashing sink		\$1,200	1	\$1,200
Construction of 1 teachers' bathroom		\$7,000	1	\$7,000
Hygiene facilities for menstruating girls (private toilet with shower, access to menstrual pads, incinerator, and enclosed area to wash and dry clothes)		\$6,000	1	\$6,000
Complete boys bathroom		\$15,000	1	\$15,000
Complete girls bathroom		\$20,000	1	\$20,000
Construction of bathrooms and washing sink at Tsaayo Primary School	\$68,700			
One washing sink with mirror		\$200	8	\$1,600
All hygiene paintings in all bathrooms		\$500	1	\$500
Incinerator (to burn health razor material)		\$400	1	\$400
Bathroom stall with flush toilet and faucet for washing		\$1,000	17	\$17,000
Construction of handwashing sink		\$1,200	1	\$1,200
Construction of 1 teachers' bathroom		\$7,000	1	\$7,000
Hygiene facilities for menstruating girls (private toilet with shower, access to menstrual pads, incinerator, and enclosed area to wash and dry clothes)		\$6,000	1	\$6,000
Complete boys bathroom		\$15,000	1	\$15,000
Complete girls bathroom		\$20,000	1	\$20,000
Remodeling of bathrooms and washing sink at Dohom Primary School	\$43,700			
One washing sink with mirror		\$200	8	\$1,600
All hygiene paintings in all bathrooms		\$500	1	\$500
Incinerator (to burn health razor material)		\$400	1	\$400
Bathroom stall with flush toilet and faucet for washing		\$1,000	10	\$10,000
Construction of handwashing sink		\$1,200	1	\$1,200
Remodel of 1 teachers' bathroom		\$4,000	1	\$4,000
Hygiene facilities for menstruating girls (private toilet with shower, access to menstrual pads, incinerator, and enclosed area to wash and dry clothes)		\$6,000	1	\$6,000
Remodel boys bathroom		\$8,000	1	\$8,000

Remodel girls bathroom		\$12,000	1	\$12,000
------------------------	--	----------	---	----------

Request:

We request a donation of \$10,000 USD to help us on this project and to start a relationship with Global Giving.

I appreciate the chance to have a conversation as to how we might be able to partner as I can see that our missions align.

Thank you for your time and consideration.

Sincerely,

Eduardo Lins Henrique

Chief Marketing Officer

Karimu International Help Foundation

eduardo.henrique@karimufoundation.org

Whatsapp +1 415 3617664 (USA)

Annex:

Materials:

S/No.	DESCRIPTION	QUANTITY	UNIT
A	SUBSTRUCTURE		
A1	Material for setting out the building		
A1.1	2"x 2" soft wood timber	60	Pcs
A1.2	Assorted nails 3"	8	Kgs
A1.3	Sisal thread	16	Rolls
A1.4	Small hammer	2	Nos
A1.5	Medium hammer	1	Nos
A1.6	Spade	12	Nos
A1.7	Water for works	2485	drums
A2	Foundation walling		
A2.1	Hardcore	35	trips
A2.2	Cement	80	Bags

A2.3	River Sand	9	Trips
A3	Reinforced concrete to Ground beam mix (1:2:4)		
A3.1	Reinforcement bars, 12 mm	1.2	t
A3.2	Reinforcement bars, 8 mm	0.4	t
A3.3	Banding wire	50	Kgs
A3.4	Soft wood 1"x 10"	100	Pcs
A3.5	Assorted nails (3" and 4")	30	Kgs
A3.6	Soft wood 2"x 2"	90	Pcs
A3.7	Cement	40	bags
A3.8	Sand	8	trip
A3.9	Aggregates	20	m3
SUB-TOTAL A	ELEMENT NO. 01: TOTAL MATERIAL COST FOR FOUNDATION CONSTRUCTION		
B	SUPERSTRUCTURE		
	150mm thick solid concrete blocks bedded and jointed with concrete mortar (1:4)		

B1	WALLING		
B1.1	Sand	11	Trips
B1.2	Cement	118	Bags
B1.3	Bricks	35,000.00	pcs
B1.4	Damp proof membrane	3	roll
SUB-TOTAL B1	ELEMENT NO. 02: TOTAL COST FOR WALL CONSTRUCTION		
B2	Construction of lintel		
B2.1	Binding wire	50	Kgs
B2.2	Reinforcement bars, 12 mm	1.2	t
B2.3	Reinforcement bars, 8 mm	0.4	t
B2.4	Assorted nails (3" and 4")	30	Kgs
B2.5	Soft wood 1"x 10"	60	Pcs
B2.6	2"x4" woods	90	pcs
B2.7	Cement	40	Bags
B2.8	Sand	4	Trip

B2.9	Aggregate	20	m3
SUB-TOTAL B2	ELEMENT NO. 03: TOTAL FOR LINTEL CONSTRUCTION		
C	ELEMENT NO. 04 - ROOF CONSTRUCTION AND FINISHES		
C1	ROOF STRUCTURE		
	The following in treated softwood timber trusses with different spans		
C1.1	2*6 soft wood bottom chord	pcs	30
C1.2	2*4 soft wood strut	pcs	180
C1.3	2*4 Soft wood Top chord	pcs	90
C1.4	Allow sum for end plates and and bolts for tieng trusses on ring beams	Ls	1
C2	Hardwood Fascial board		
C2.1	1*10 soft wood for fascial board	pcs	60
C3	ROOF COVERING		
	Tiles Roofing; DECRA TILES, colour coated lightweight roof tiles;OR any other equal and approved tiles size 1700mm x 317mm;approved colour; fixing each tile in		

	accordance with manufacturer's printed instructions		
C3.1	Coverings; simba dumu GS 28; flat or sloping not exceeding 45 degrees from horizontal; fixing to angle clit purlins with approved roofing bolt complete with galvanised steel washes	sqm	346
C3.2	Extra over roof covering for Ridge and valley caps approved for IT5 roof covering materials	m	83
C4	Roof drainage (provisional)		
C4.1	150mm diameter UPVC straight gutter;standard fascia brackets;fixing to timber with galvanised screw: Gutters	m	130
C4.2	Extra; bend	No	12
C4.3	Shoe	No	12
C4.4	150mm Diameter Upvc rain water down pipe	m	60
SUB-TOTAL C	ELEMENT NO.04 : ROOF CONSTRUCTION		
D	ELEMENT NO.5-WINDOWS & DOORS		
D1	HEAVY DUTY MILD STEEL WINDOWS		

	Supply and fix the following purposed made mild steel windows; in INNER and OUTER panels; BRONZE finish;provide panels glazed with 6mm thick glass;complete with all fittings; accessories and fasteners; fixing to concrete base; silicon sealer		
D1.1	Overall size 3200 x 600mm high	No.	-
D1.2	Overall size 2600 x 1200mm high	No.	-
D1.3	Overall size 600 x 700mm high	No.	30
D2	HEAVY DUTY MILD STEEL DOORS		
	Decorative security grills in galvanized m.s welded fabrication , welds ground smooth; 20mm mild steel flat bars in main frame with 20mm mild steel flat bars laid vertically at 100mm centres; fixing with expansion bolts with 12mm loose bolts and space		
D2.1	Overall size 750x 2700mm high	No.	26
D2.2	Overall size 900 x 2700mm high	No.	6
D2.3	Overall size 1350 x 2700mm high	No.	2
D3	Allow sum for the doors and windows accessories		

D3.1	This includes but not limited to glass window and window stay	lumpsum	1
SUB-TOTAL D	ELEMENT NO. 5 - WINDOWS & DOORS		
E	ELEMENT NO. 6: INTERNAL AND EXTERNAL FINISHES		
E1	Wall finishes		
	External plastering in two coats, first coat 12mm thick cement and sand mix (1:4) steel trowelled; prepare and apply second coat 3mm thick stucco steel trowelled to smooth finish,including sanding with sand paper.		
E1.1	Walls; concrete or masonry surfaces externally	Sqm	270
	Internal plastering in two coats, first coat 12mm thick cement and sand mix (1:4) steel trowelled; prepare and apply second coat 3mm thick stucco steel trowelled to smooth finish,including sanding with sand paper.		
E1.1.1	Walls; concrete or masonry surfaces internally	Sqm	340
E1.1.2	Ceiling; concrete or masonry surfaces internally	Sqm	180
E2	Ceramic wall tiling: Cement sand (1:3) screeds; beds etc		
E2.1	Backing; 20mm; to receive wall tiles	Sqm	

E3	White glazed ceramic (Ex - spain) wall tiles with cushion edges to BS 1282 fixed to backing with adhesive and pointed with white grout		
E3.1	Provide for supply of ceramic wall tiles and take delivery and fix 300 x 150 x 6mm ceramic tiles to walls on prepared backing (measured separately)	Sqm	120
E4	Floor Finishes: Cement and sand (1:4) backings etc		
E4.1	Beds ; 30mm thick; over 300mm wide	Sqm	100
E5	Tile, slab or block finishings in floor finishes; Non - sliperly Porcelain Floor tiles; butt joints; laid to pattern; bedded and pointed in cement mortar; fixing with approved adhesive; grouting with approved grout		
E5.1	450 x 450 x 10mm units to floors on cement and sand base;internally	Sqm	100
E6	Tile, slab or block finishings; Non - sliperly Porcelain floor tiles; butt joints; symmetrical layout; bedded and pointed in cement mortar; fixing with approved adhesive; grouting with approved grout		
E6.1	300 wide treads; butt joints; one rounded nosing with non-slip finish; to cement and sand base	m	30
E6.2	150 wide risers; butt joints; to cement and sand base	m	30

E7	Tile, slab or block finishes; Ceramic (Ex - Spain) tile skirting as described		
E7.1	450 x 100 x 8mm thick tile skirting	m	90
E8	Ceiling Finishes		
	Plain sheet finishing, gypsum boards ceiling (Ex-Thailand), tapered edge wallboard fixing with plasterde self taping screws headholes filled and sanded, taped and srimimed board all receive direct decorations.		
E8.1	To ceiling internally	Sqm	98
E8.2	100mm gypsum cornice	m	100
E9	Eave Ceiling		
E9.1	PVC Ex-Thailand Eave ceiling	Sqm	60
E10	Treated softwood, Brandering		
E10.1	Softwood brandering ;50 x 50mm size	m	775
SUB-TOTAL E	ELEMENT NO.06: INTERNAL AND EXTERNAL FINISHES		
F	ELEMENT NO. 7 - PAINTING AND DECORATION		

F1	Prepare and apply one primer coat and two finishing coats of Washable emulsion paint or other equal and approved		
F1.1	Plastered walls ;internally	Sqm	540
	Ceiling; concrete or masonry surfaces internally	Sqm	
F1.2	Gypsum ceiling; internally	Sqm	223
F2	Prepare and apply three coats of acrylic paint as 'Crown Solo Permacote' or other and approved to plastered surfaces		
F2.1	Plastered walls ;Externally	Sqm	455
F3	Painting; external work; one coat primer ; two coats of oil based paint; iron or steel surfaces		
F3.1	General surfaces; over 300mm girth painted on both sides	Sqm	15
SUB TOTAL F	ELEMENT NO.07: PAINTING AND DECORATION		
G	ELEMENT NO.8 : PLUMBING AND ELECTRICAL INSTALLATION		
G1	Allow sum for electrical installation for all building and preparation of as bult drawings	Ls	1

G2	Allow sum for plumbing systems	Ls	1
G3	Allow sum for handwash construction	ls	1
SUB TOTAL G	ELEMENT NO.08: PLUMBING, ELECTRICAL INSTALLATION AND SCAFFOLDING		
SUB TOTAL H	ELEMENT NO.09: SEPTIC TANK, ANAEROBIC FILTERS, AND SOAK AWAY PIT	Ls	1
SUB TOTAL I	ELEMENT NO.10: INCIENERATOR AND WATER STORAGE TANK 5m3	Ls	1