

READING FOR EXCELLENCE AND DEVELOPMENT

3,309 LEARNERS REACHED AND COUNTING



Together, we can reach zero illiteracy!

LEARNING POVERTY

Reading is the foundation for all learning areas, and children who have poor reading and comprehension skills will consequently have difficulty in learning other subjects.

A report by World Bank in November 2022 estimated that 9 out of 10 Filipino children at the age of 10 years old struggle to read or understand simple text.

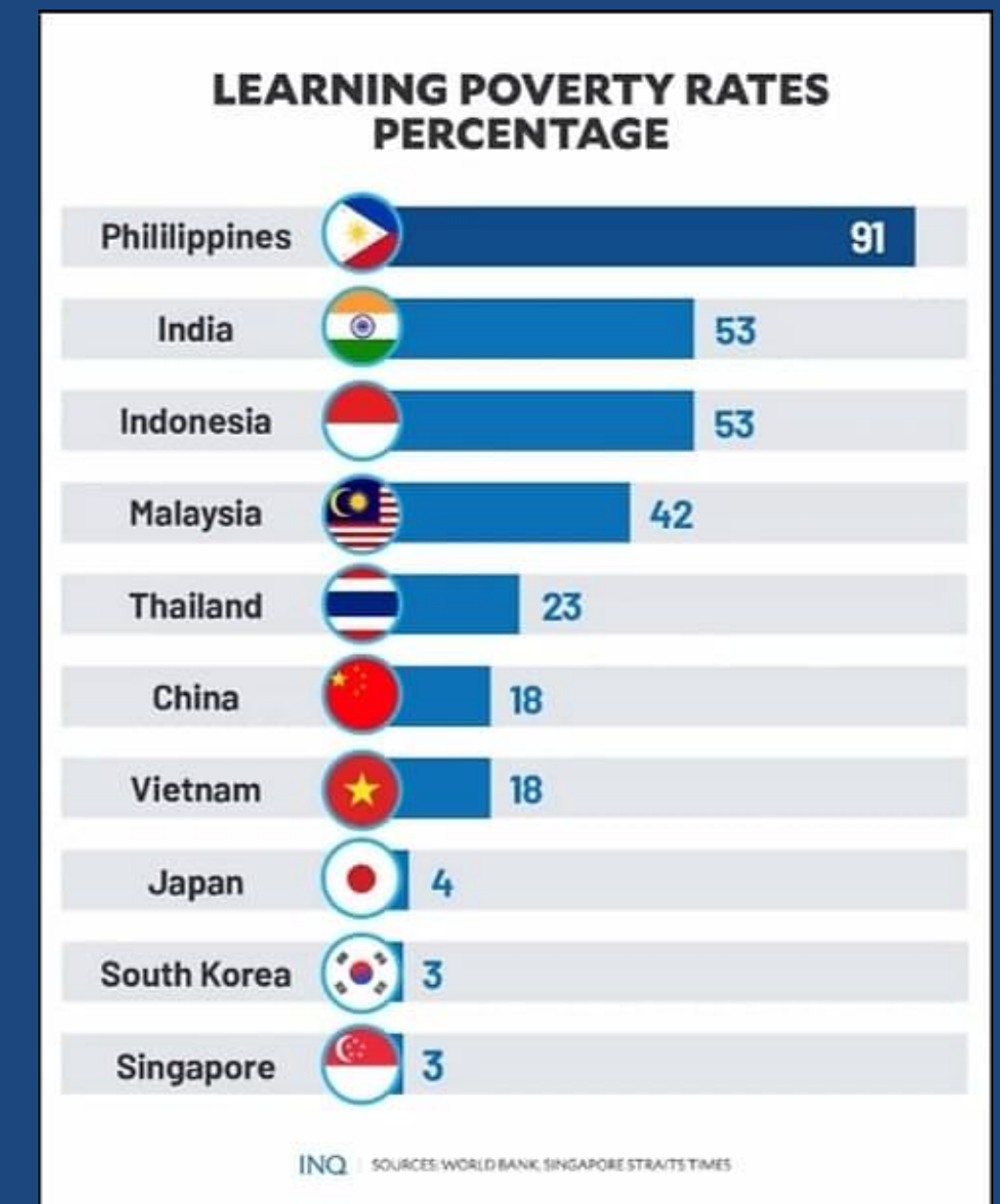
This prompted Gawad Kalinga to respond to the learning crisis.

HEADLINES

PH 'learning poverty' still among region's worst

By: [Ronnel W. Domingo](#) - @inquirerdotnet

Philippine Daily Inquirer / 05:56 AM September 22, 2023



READ PROGRAM

Intending to address reading illiteracy mainly among children 6-12 years of age, the Reading for Excellence and Development (READ) program works towards Zero Illiteracy in various ways, mainly through:

1. partnering with public schools and
2. organizing local stakeholders, towards
3. creating a learning community with conducive learning environment and
4. conducting reading and comprehension tutorials for children identified with learning gaps.



PROGRAM ACTIVITIES



**BUILD RELATIONSHIPS w/
LOCAL STAKEHOLDERS**

The READ Program starts with building relationships with and among local stakeholders, moving towards organizing a learning community to be developed through collaborative efforts



COMMUNITY ORIENTATION

Whether school-based, community-based, or hybrid modality, an orientation inviting all local community members is essential for the onboarding process, encouraging involvement and support in everyone



ASSESSMENTS

Pre-assessments are made to determine reading levels and identify the children with learning gaps, prioritizing ages 6-12 y.o. into the program; Mid- and Post-assessments are made to monitor progress of the learners



TUTORIALS

Learners are grouped according to their reading levels, with 3-5 learners of similar levels assigned to a tutor; a total of 24-36 hours of tutorials are done across 12-18 sessions spanning an average of 3 months



SNACKS / MEALS

Hunger adversely affects a learner's focus and performance, impacting their memory and ability to learn; snacks are prepared to at least combat hunger, and local support can upgrade into or add meals



CULMINATING ACTIVITY

Learners end the program with a culminating activity commonly involving poetry reading or book story-telling, and awarding. Included in the program is the Honoring of the Parents, Teachers, and other Local stakeholders.

PROGRAM REACH



3,309
LEARNERS

67
LEARNING
COMMUNITIES

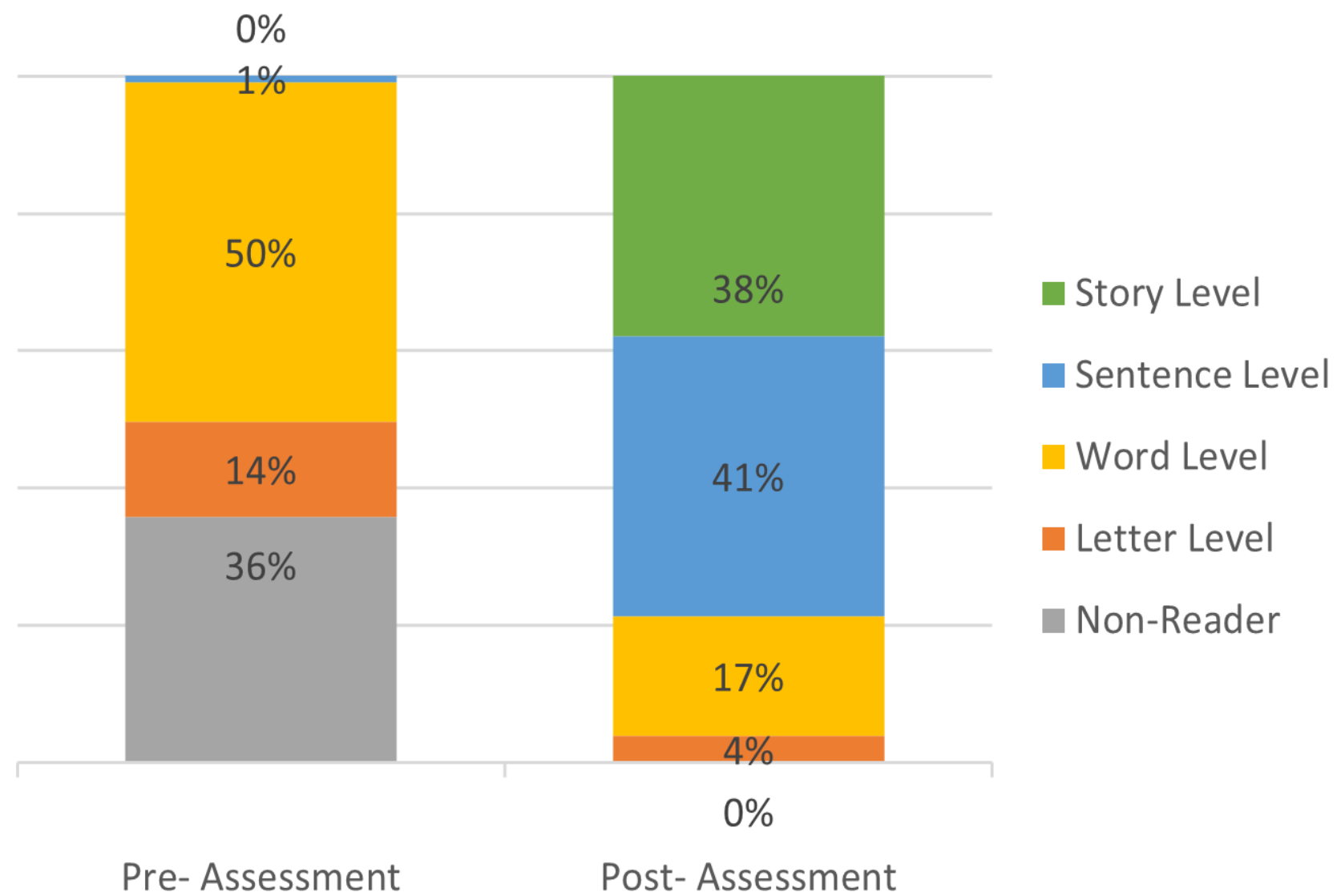
39
TOWNS

29
PROVINCES

*From September 2023 to July 2024

PROGRAM IMPACT

Reading Level Distribution



OF THE PRE-ASSESSMENT NON-READERS:

65% ADVANCED TO SENTENCE LEVEL READING

7% ADVANCED TO STORY LEVEL READING



www.gk1world.com