

RED CROSS RESPONSE

TO THE EFFECTS OF THE DANA

Situation report 13

31/01/2025

Content

CONTEXT4

IMPACT5

RED CROSS RESPONSE ¡Error! Marcador no definido.

Emergency phase ¡Error! Marcador no definido.

 Distribution of food and non-food items ¡Error! Marcador no definido.

 Psychosocial support ¡Error! Marcador no definido.

 Mobilisation activities ¡Error! Marcador no definido.

Recovery phase ¡Error! Marcador no definido.

 Cash assistance for basic needs ¡Error! Marcador no definido.

 Social Response Teams 11

 Support Teams for Business and Livelihood Recovery 12

 Rehabilitation actions and appliance delivery ¡Error! Marcador no definido.

 Other actions ¡Error! Marcador no definido.

Our data ¡Error! Marcador no definido.

SOCIETY’S RESPONSE ¡Error! Marcador no definido.

Volunteering 16

Fundraising channels ¡Error! Marcador no definido.



CONTEXT



The **DANA**, that impacted the east and south of the Iberian Peninsula, has left serious consequences in the central area of the Valencian Community and the east of Castilla-La Mancha, severely affecting **78 municipalities** (75 in Valencia; 2 in Castilla-La Mancha; 1 in Andalucía).

The DANA impacted the Valencian Community the most, being this region the hardest hit. Specifically, the municipalities of the regions of La Plana de Utiel-Requena, L'Hoya de Buñol, L'Horta Sud and L'Horta Nord, Ribera Alta, Ribera Baixa, El Camp del Túria, La Safor, Los Serranos and some districts in the south of Valencia, where the floods have caused not only material damage but also human losses.

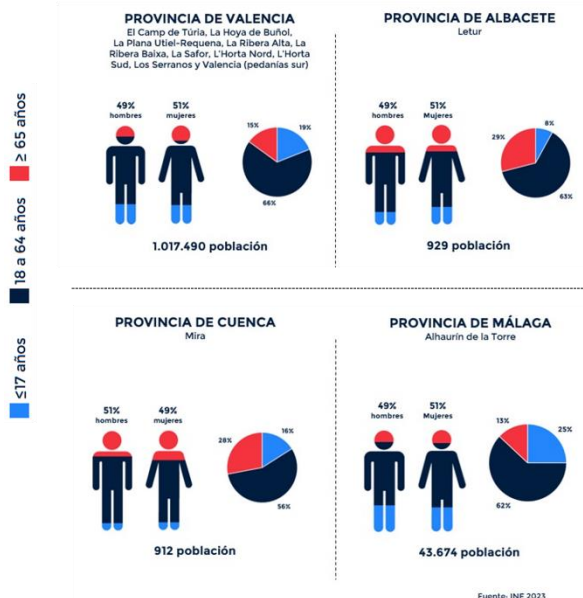
During the first few days, up to **40,000 people remained without electricity supply** due to infrastructure damage and more than **3,000 people required emergency shelter**.

IMPACT

The Ministry of Transport quantifies damage to 80km of roads and another 80km of missing railway tracks which will not be able to be put back into service in the short term. The population of the affected municipalities amounts to 845,000 people and it is estimated that 190,000 could be directly affected. Based on these figures, media sources have analysed that there could be at least 77,000 homes affected. In agriculture, Agroseguro has reported that **the DANA has seriously affected crops that are being harvested**. In particular, persimmon, citrus fruit and vegetables in the region of Murcia; vegetables in the province of Albacete; and citrus fruit and vegetables, including those grown under plastic, in Almeria. In addition to damage to wood in woody crops and livestock farms. In terms of commercial activity, the Chamber of Commerce has estimated **that some 4,500 shops in the province of Valencia have suffered damage** and that some 1,800 of them have been destroyed.

All these circumstances have resulted in a large segment of the population facing sudden vulnerability, threatening both their lives and their assets and livelihoods. Additionally, those who were already in a situation of risk may have seen their vulnerability further exacerbated by the emergency.

PERFIL DE LAS PERSONAS AFECTADAS



CCAA	Provincia	Comarca / Población	Municipios que engloba	Población en municipios afectados
C. Valenciana	Valencia	El Camp de Túria	5	87.775
		La Plana Utiel-Requena	7	36.185
		La Ribera Alta	14	164.104
		La Ribera Baja	12	82.663
		La Safor	1	17.443
		L'Horta Nord	1	73.488
		L'Horta Sud	20	482.609
		L'Hoya de Buñol	9	45.940
		Los Serranos	5	5.254
	Valencia (pedanías Sur)	1	22.029	
Castilla-La Mancha	Albacete	Letur	1	929
	Cuenca	Mira	1	912
Andalucía	Málaga	Alhaurín de la Torre	1	43.674
TOTAL			78	1.063.005

Fuente: Real Decreto Ley 6/24 de 5 de noviembre

RED CROSS RESPONSE

To mitigate the effects of the DANA, a comprehensive response plan has been activated to address the most urgent needs of the affected individuals and communities. The **RED CROSS PLAN TO THE EFFECTS OF THE DANA**, aims to provide integrated and coordinated support for the recovery of those impacted in the affected areas, ensuring their physical, emotional, and social well-being.

The response plan has an **initial duration of 36 months** and follows a phased strategy that will unfold progressively, transitioning from the current emergency situation towards recovery and resilience. The plan is structured into **three key phases**:



The Red Cross intervention **will prioritize the most vulnerable and at-risk groups** among those affected, addressing both **urgent needs** and those required in the **medium and long term**. Additionally, efforts will be made to strengthen the overall resilience and recovery capacity of communities, while also supporting the local and regional Red Cross branches impacted by the disaster by restoring and reinforcing their operational capacity for this and future events.

Therefore, the intervention will focus on three main groups:

1. **People** affected across different areas of the territory;
2. **Communities** impacted by the disaster; and
3. **The Red Cross territorial network** within the affected area.

Emergency phase

Within the emergency phase, the following actions continue to be carried out:

Distribution of food and non-food items

From the logistics hub in Pinedo, the distribution of small and medium-sized relief items continues, responding to the needs and requests of the affected population who have reached out to the Red Cross through the Regional Operations Center in Alicante.

To date, the following items have been delivered to households:

- **5.409 rest kits** (complete beds of different sizes and bedding adapted to the sizes).
- **405 food kits**
- **497 cleaning kits**
- **1.892 electric radiators**
- **318 ceramic glass cooktops**
- **1.562 Dehumidifiers**

Several teams dedicated to demand management, distribution, and logistics are actively participating in this work, ensuring volunteer involvement throughout the entire process—from making calls to coordinate deliveries to the administrative closure of each completed mission.

Psychosocial support activities

Needs continue to be identified among families and individuals who have suffered both human and material losses. Psychosocial support teams, composed of psychologists, social workers, and support responders, provide follow-up for those requiring intervention beyond the initial emotional ventilation offered during first contact. These teams coordinate with the network of local branches and the healthcare system to refer specific cases as needed.

Además de las acciones realizadas por los **49 equipos** movilizados desde el inicio y pertenecientes a la **ERIE Psicosocial**, en el ámbito local se han realizado un total de **610 intervenciones individuales y 2 intervenciones grupales** para un total de 18 personas.

In addition to the actions carried out by the **49 teams** mobilized since the beginning as part of the **Psychosocial Teams (ERIE)**, a total of **610 individual interventions and 2 group interventions** for 18 people have been conducted at the local level.

Mobilization activities

Since the beginning of the emergency, a total of **934 mobilizations have been carried out using electric stair climbers**, enabling people with reduced mobility—who have been unable to use their building elevators due to flood damage—to access their daily activities, such as attending day care centers or medical appointments.



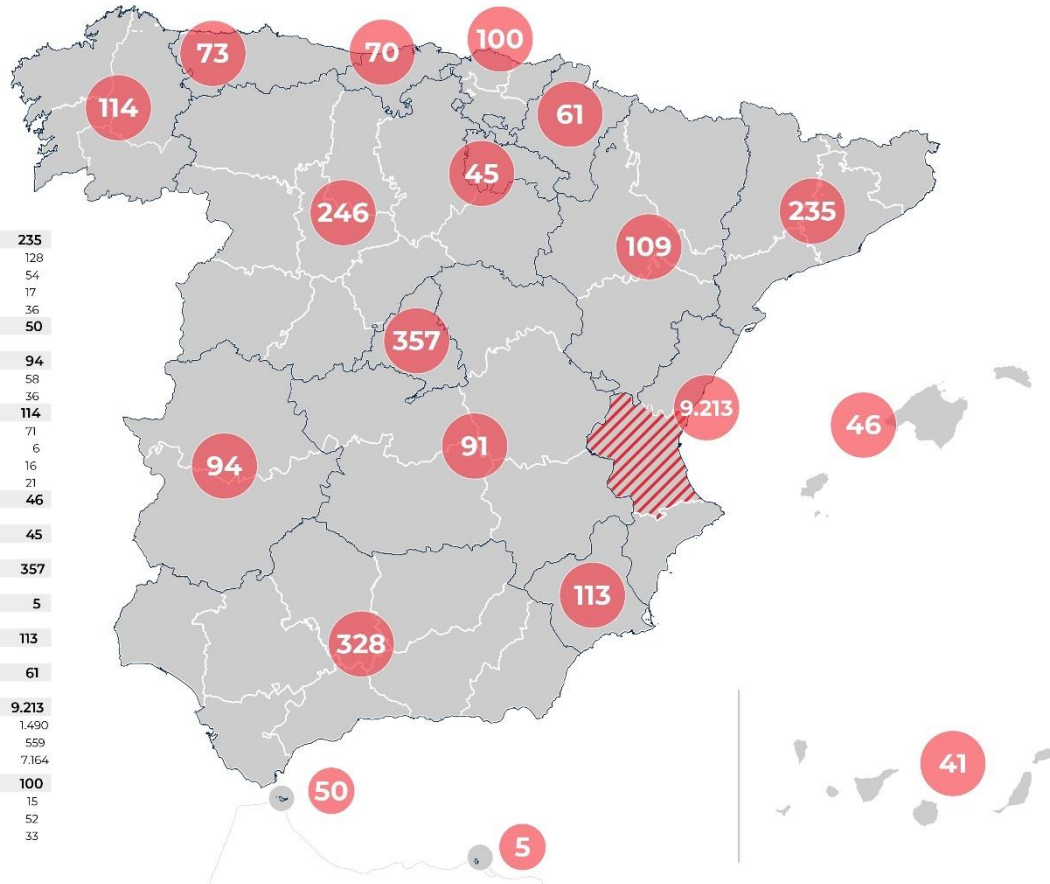
A total of **11,347 human resource¹ deployments** have been carried out **since the beginning of the emergency**, dispatched from all territorial levels with the following distribution:



RESPUESTA DE CRUZ ROJA A LOS EFECTOS DE LA DANA - VALENCIA
PERSONAS DE CRUZ ROJA ESPAÑOLA MOVILIZADAS PARA LA EMERGENCIA
 30 oct. 2024 - 31 enero 2025

11.347 MOVILIZACIONES DE RRHH

ANDALUCÍA	328	CATALUÑA	235
ALMERÍA	44	BARCELONA	128
CÁDIZ	34	GIRONA	54
CÓRDOBA	47	LLEIDA	17
GRANADA	51	TARRAGONA	36
HUELVA	17	CEUTA	50
JAÉN	20	EXTREMADURA	94
MÁLAGA	66	BADAJOS	58
SEVILLA	49	CÁCERES	36
ARAGÓN	109	GALICIA	114
HUESCA	22	A CORUÑA	71
TERUEL	13	LUGO	6
ZARAGOZA	74	OURENSE	16
ASTURIAS	73	PONTEVEDRA	21
ISLAS CANARIAS	41	ILLES BALEARS	46
LAS PALMAS	26	LA RIOJA	45
TENERIFE	15	MADRID	357
CANTABRIA	70	MELILLA	5
CASTILLA LA MANCHA	91	MURCIA	113
ALBACETE	44	NAVARRA	61
CIUDAD REAL	25	COM. VALENCIANA	9.213
CUENCA	3	ALICANTE	1.490
GUADALAJARA	3	CASTELLÓN	559
TOLEDO	16	VALENCIA	7.164
CASTILLA Y LEÓN	246	PAÍS VASCO	100
ÁVILA	18	ARABA	15
BURGOS	36	BIZKAIA	52
LEÓN	44	GIPUZKOA	33
PALENCIA	13		
SALAMANCA	38		
SEGOVIA	39		
SORIA	16		
VALLADOLID	35		
ZAMORA	7		



¹ This figure differs from the one reported in the BI "Emergency Response – DANA" because it accounts for deployments rather than unique individuals, as is the case in the BI.

Recovery phase

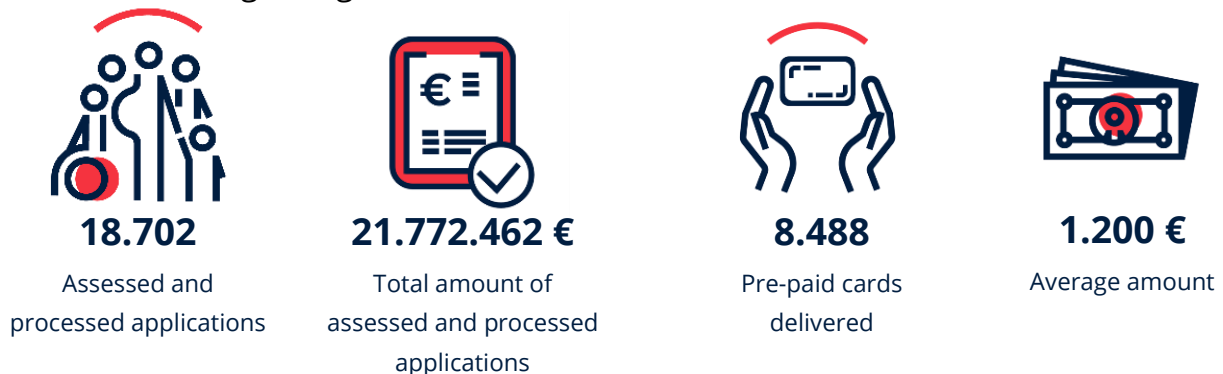
After the Christmas holiday, activities continue as usual, as detailed below.

As a result of the work carried out with the affected population, the **response strategy continues to be adjusted** based on the needs expressed and the lessons learned nearly three months after the onset of the emergency.

Cash assistance for basic needs

The **distribution of prepaid cards²** (cash assistance) continues, in collaboration with Caixa Popular. This method **allows individuals to decide**, depending on the moment and their situation, how to spend the amount³.

To date, the data regarding cash assistance is as follows:



Of the total applications processed, **8,488 cards** have already been distributed to individuals whose homes have been affected, with priority given to the most vulnerable groups. To ensure this, the teams continue conducting **initial assessments**, which also help **identify additional needs**.

This distribution work is being carried out in collaboration with the Social Response teams, both in-person and remote.

² Prepaid cards that allow beneficiaries to access a set amount of money for everyday purchases in stores or services.

³ The amounts have been calculated to cover needs for three months, based on household size; for a single person: 657 €, for two members: 987 €, for three members: 1.317 €, for four members: 1.647 € and for five or more members: 1.977 €.

Social Response Teams

Since the beginning of the emergency, **84 social response teams** have been mobilized, **consisting of a total of 209 people**

The designated functions of these teams are as follows:

- **Contacting beneficiaries** to schedule an appointment to address their request.
- **Identifying available resources** to be provided to beneficiaries during the appointment.
- **Registering** beneficiary information, if applicable.
- **Distribution of prepaid cards or other necessary items** based on identified needs.
- **Psychosocial support** to those who may require it.
- Carrying out **any other tasks assigned** by the local technical coordination.

These on-site teams deployed to Valencia are supported and complemented by remote assessment teams.

Business and livelihood recovery

The **identification of businesses and livelihoods** significantly affected by the disaster continues, with visits being scheduled to inform them about direct assistance from the Red Cross. At the same time, other needs are being identified, such as support with administrative procedures for aid applications, assessment of business recovery viability, sudden unemployment of family members or employees, and other social, economic, and emotional needs arising from their situation.

A total of **1,161 businesses** have been identified on-site as eligible for financial assistance of up to **€5,000**. So far, **154** grants have been distributed, amounting to a total of **€762,500**, and **985 applications** are currently under review.



1.161

Identified business



985

Assistance under review



154

Delivered Assistance



762.500 €

Executed budget

From now on, the intensity of business identification will be reduced, and the remote support teams will be reinforced for the **review of applications and evaluation of grants**.

Support teams for business and livelihood recovery

Since the beginning, **six on-site support teams**, totaling **20** people, and **13 remote support teams**, totaling **54 people**, have been mobilized.

The on-site teams support and complement the Valencia employment team by conducting informational visits, identifying needs, managing schedules, reviewing case files, archiving documents, and recording activities.

The remote teams complement the on-site teams by strengthening the review and assessment of case files for businesses that have already been visited and have submitted the required documentation. At this stage, **reinforcing these teams is a priority** to ensure timely processing of applications so that those affected can receive assistance as soon as possible.



Rehabilitation actions and appliance distribution

Within the recovery phase, efforts are being made to rehabilitate homes and distribute household appliances.

A total of **269 housing rehabilitation requests** have been received, with work already underway on eight of them, amounting to a total of **10,625€**.

Regarding the distribution of household appliances, **5,056 requests** have been received for appliance replacement. To date, **2,210 appliances** have been delivered, totaling **343,288€**.

The most requested appliances continue to be washing machines, refrigerators, ovens, ceramic cooktops, and kitchen stoves.



Other actions

Other actions being carried out within the recovery phase:

- **Activities with children and Youth: 2.099 toys** have been delivered to children and youth affected by the DANA, and to participants of the “The educational toy” project, coordinated by the Red Cross Youth section.
- **Technical assistance:** A total of **126 technical assistance** has been processed, amounting to **€99,777**. Of these, **23 items have already been delivered:**
 - o Adjustable beds with lifting frames (90 cm and 105 cm).
 - o Viscoelastic mattresses (90 cm and 105 cm).
 - o Self-propelled wheelchairs.
 - o Electric wheelchairs.
 - o Walkers with four wheels and with two wheels and brakes.
 - o Anti-decubitus mattresses.
 - o Harnesses and safety belts for stair-climbing wheelchairs.
- **Access to rights:** since the beginning of the emergency, a total of 112 access to rights orientations have been provided. The most common inquiries continue to be related to housing and insurance.
- **Other key actions carried out by the RC Local Branches in the affected municipalities:**

- Algemesí: Participation in a meeting with other local organizations. Collaboration has begun with local groups to raise awareness of the actions carried out within the framework of Red Cross projects.
- Requena: cleanup works along the Magro River have started in collaboration with other organizations and residents.
- Aldaia: Work has begun with homeless settlements to assess needs and provide support.

As mentioned at the beginning of this report, data continues to be reported daily for **tracking and monitoring** the actions carried out during the emergency phase, through a [Power BI](#), accessible from the Spanish Red Cross website (www.cruzroja.es).



Respuesta a EMERGENCIAS - DANA



299.065

ASISTENCIAS REALIZADAS



8.479

RECURSOS HUMANOS

12

Nº EMERGENCIAS

Identificador Emergencia

Todas

Comunidad Autónoma

Todas

Tipo emergencia

Todas

Provincia

Todas

Fecha del reporte

30/10/2024

29/01/2025

Total equipos

214

ALOJAMIENTO



17

Albergues



4.293

Personas albergadas



15

Localidades



12 mil

Plazas habilitadas

ENTREGAS DE BIEN



30

Ptos. distribución y entrega



155.775

Manutenciones a personas afectadas e intervinientes



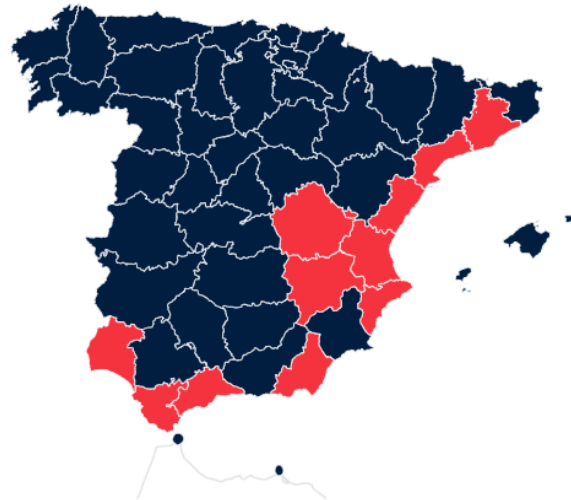
40.408

Kits higiene



4.394

Mantas



● Provincias AFECTADAS que movilizan recursos
● Provincias que movilizan recursos

EQUIPOS DE RESPUESTA

15

Asistencia Sanitaria

33

Albergue y Logística

17

Psicosocial

9

ESIE / Infancia

4

Potabilización de agua

117

Recuperación en Emergencias

10

Comunicaciones

7

Búsqueda y Salvamento

1

Participación Comunitaria

1

Salud Comunitaria

RECURSOS MOVILIZADOS



6

Embarcaciones



11

Vehículos especializados



14

Ambulancias



118

Vehículos transporte pers.



48

Vehículos 4x4



35

Logística

Datos provisionales a fecha y hora (UTC): 31/01/2025 10:30h

In the coming days, a new **Power BI** will be launched with data related to the recovery phase, which will allow the visualization of all actions carried out within this phase.

Through it, information related to the following can be obtained:

N.º of people assisted

N.º of responses

N.º of centers from which we provide response.

Activities carried out with the surrounding environment.

Additionally, this information will be **segmented by temporal evolution**, a complete detail of the activities, and sociodemographic profiles.

SOCIETY'S RESPONSE

Volunteering

Since the beginning of the emergency, we have been working to meet the **large number of requests** for cooperation from the population. So far, we have:



4.640

Mobilized people



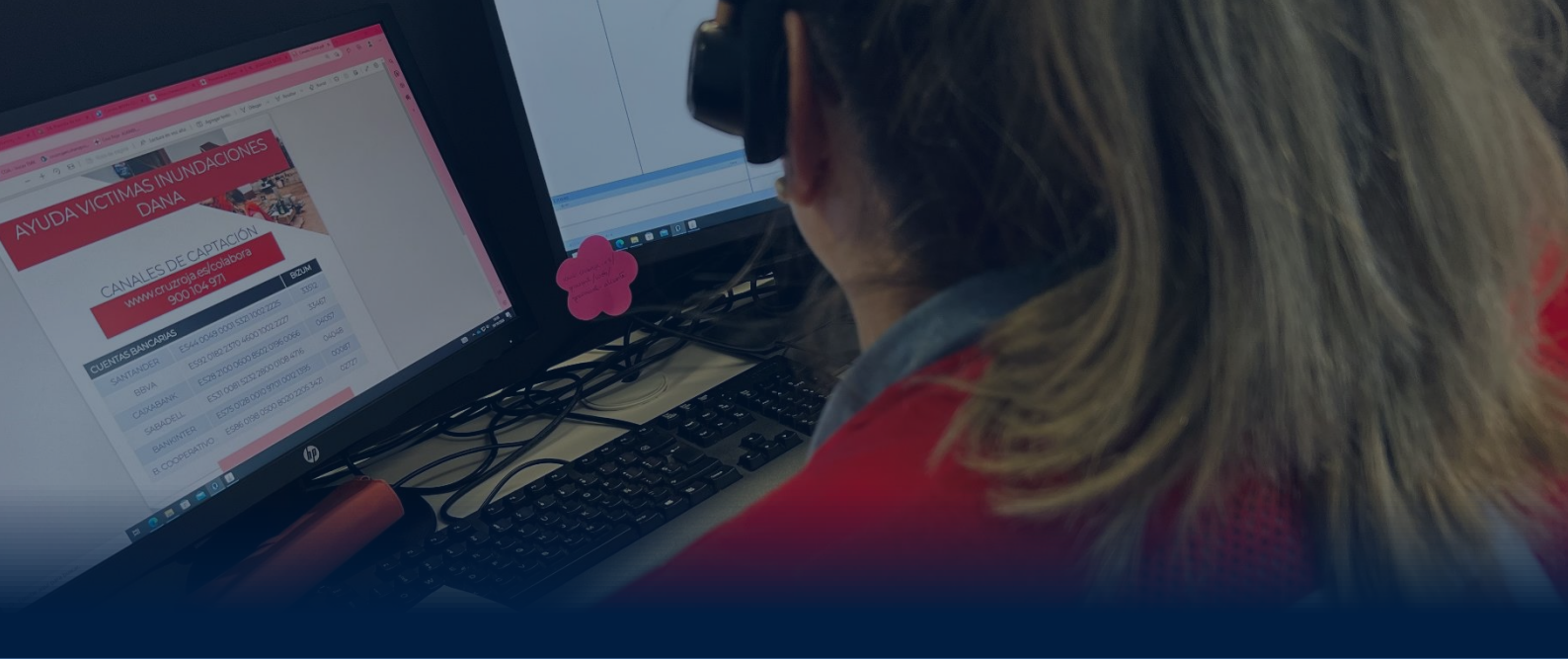
76.772

Registered hours

The main actions carried out are related to **Intervention in the field**, with more than **73 thousand hours** dedicated to these activities, followed by **logistical and organizational actions**.

Volunteers have been mobilized from:

Andalucía, Aragón, Comunidad Valenciana, Islas Canarias, Cantabria, Castilla-La Mancha, Castilla y León, Cataluña, Ceuta, País Vasco, Galicia, La Rioja, Madrid, Melilla, Navarra, Asturias, Murcia, Islas Baleares, Extremadura.



Fundraising channels

As a sign of confidence in the work of the Red Cross and its capacity, great financial support has been received from different sectors

54,6 million euros from private donations, 46,2 million euros from companies and foundations and 2,7 million from public administrations.

These donations will enable the implementation of the Red Cross response plan for the effects of the DANA.

BANK ACCOUNT		BIZUM
SANTANDER	ES44 0049 0001 5321 1002 2225	33512
BBVA	ES92 0182 2370 4600 1002 2227	33467
CAIXABANK	ES28 2100 0600 8502 0196 0066	04057
SABADELL	ES31 0081 5232 2800 0108 4716	04048
BANKINTER	ES75 0128 0010 9701 0012 1395	00087
B. COOPERATIVO	ES86 0198 0500 8020 2205 3421	02727

www.cruzroja.es/colabora



