



el cauce

CAMP HILL ESCOBAR



## WHO WE ARE

**Respirar Comunidad** is a non-profit organization that aims to establish inclusive, productive and self-sustaining residential communities for adults with intellectual and developmental disabilities.

Its current project, **El Cauce | Camphill Escobar**, is the first large-scale inclusive community initiative in Argentina. Inspired by the **Camphill Movement** founded in Scotland in 1939, we are creating a version that resonates with the local climate and culture. Today there are more than 100 residential Camphill villages in 20 countries forming a worldwide network in which we participate actively.

At **El Cauce**, adults with and without disabilities will live together in co-living homes, collaborating in domestic tasks and working side-by-side on the **biodynamic farm** and in adapted workshops. We endeavor to be economically self-sustaining through a variety of productive activities, including the vegetable garden, apiary, dairy, canning and preserves facility, carpentry and other artisan workshops, bakery, and **meeting spaces** where we will offer courses and seminars, and also celebrate life in community.





## LOCATION

We are located in **Belén de Escobar** on *30-hectares* of fertile farmland with beautiful wooded glades.

Adjacent to **El Cauce** is a residential real-estate development, a project created to finance the land acquisition, and hopefully generate additional funds to develop the *Camphill community*.







## PROGRESS

### Planning and development

**El Cauce** co-exists with a separate but complementary *residential neighborhood*, forming an innovative model for urbanization that integrates productive *green spaces* and social enterprise. The morphology and design of the subdivision was developed to **preserve native trees** and generate an interior-focused neighborhood vibe that connects naturally with the adjacent *Camphill community* through paths and contiguous green spaces. **El Cauce** will demonstrate that integrating regenerative agriculture and *social innovation* with residential developments is both possible and desirable.







### General infrastructure

The project site incorporates **solar panels** for power, solar pumps to fill elevated water tanks and **solar water heaters**. Fences have been mended and we have built corrals for our cows, horses and sheep, as well as a coop for our laying hens.

Waste water is separated and processed with biodigesters and gray water recycling systems.





## Community Center

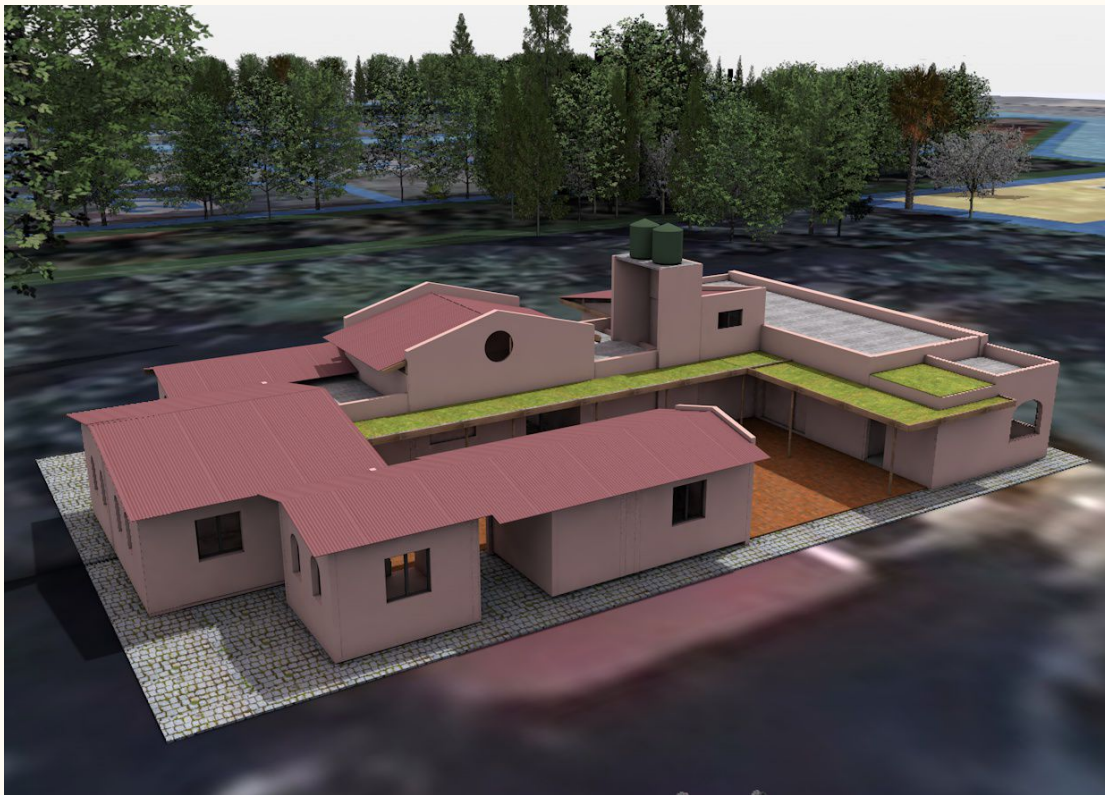


Making use of an *existing foundation*, we created a new space for events, workshops and seminars, with a large kitchen and accessible bathrooms. The sanitary spaces are brick and mortar construction and the social spaces framed with wooden logs. Ceilings are wood and concrete, with external tin and green-plant roofing.

Covered: **198m<sup>2</sup>** - semi-covered: **75m<sup>2</sup>**







### Dormitories for volunteers

An **existing building** was remodeled so that volunteers and field workers can stay on-site. It is also useful for overnight stays during seminars and events. It consists of 6 dormitories with in-suite bathrooms, a communal kitchen, and small office as well as a separate 1 bedroom apartment with its own kitchen and bedroom.

Covered area: **154m<sup>2</sup>** - semi-covered **78m<sup>2</sup>**





## Vegetable garden

At the heart of **El Cauce** lies a **2-hectare** vegetable garden cultivated according to the principles of ***biodynamic agriculture***. This vibrant space nourishes our community, providing fresh vegetables for internal use and offering produce for sale to the wider community.







## Community

Since early 2024 we host weekly gatherings with a group of **adults** who engage in ***farm maintenance activities*** and spend the night on-site. We organize ***seasonal celebrations***, collaborative maintenance projects and seminars on ***biodynamic agriculture*** and other facets of **Camphill community life**. As we expand capacity, we continue to add new activities for our growing community.

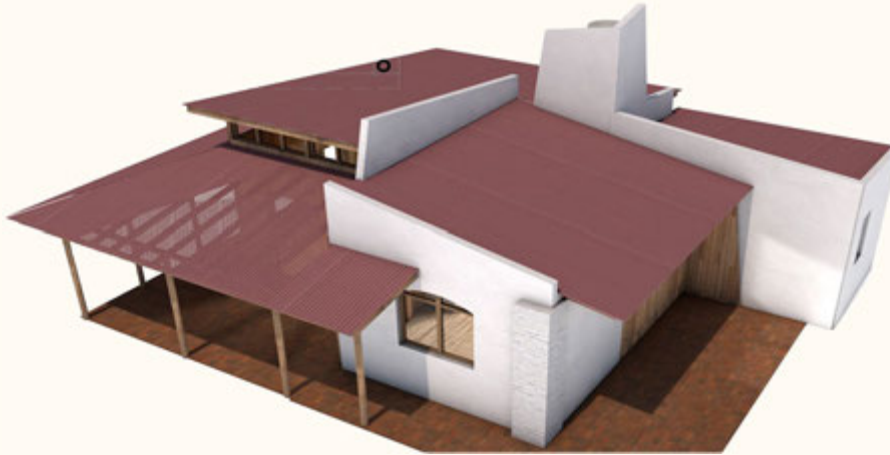




## NEXT STEPS

### Dairy Farmer's house

Renovation of an *existing building*, preserving the existing brick foundations and walls. The new home will be completed with wood framing for greater speed and thermal insulation. Covered area: **72m<sup>2</sup>** - semi covered: **42m<sup>2</sup>**



### Dairy barn

A small-scale dairy will provide milk for internal consumption and the raw materials to produce value-added products, providing a variety of interesting tasks and wholesome food for the community. The barn has been designed to be built in *two stages* starting with a few cows and a small processing room.



### Greenhouse

We plan to organize an open competition to generate ideas for an inclusive greenhouse space. An excellent opportunity to engage with students and professionals to generate a space that responds to the diverse needs of our community, constructed in community.





### Carpentry workshop

The design contemplates a **large space** that can be divided into two areas, to adapt to different needs and objectives. One area to **house larger machines**, and a separate **craft space** with hand tools for carving, engraving and finishing work. Covered: **80m<sup>2</sup>**



### Office and commercial space

We are looking to **incorporate related projects** that may be office or activity spaces, workshops or retail businesses, to **mutually support** one other in the growth and sustainability of the entire **Camphill** and accompanying community.



## First residential house

This first house will be designed for the co-living of **12 people** with individual bedrooms, shared bathrooms, kitchen and shared living spaces, as well as an **integrated space** for the house administrators and their family.

Covered: **650m<sup>2</sup>** - Semi-covered: **100m<sup>2</sup>**



### Estimated budget Co-Living Home:

#### Materials:

Shell and core materials	\$170.000-
Openings and finishings	\$140.000-
Sanitary/lighting/climate	\$ 50.000-
Watewater and sewage treatment	\$ 10.000-

#### Labor & Professional Services:

Construction labor	\$250.000-
Arquitects-project design, plans & approvals	\$ 30.000-
Construction management	\$ 50.000-

<b>Total:</b>	<b>\$700.000-</b>
---------------	-------------------





el cauce  
CAMPHILL ESCOBAR

Respirar  
comunidad

[respirarcomunidad.org](http://respirarcomunidad.org)