

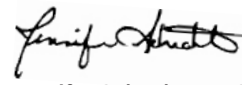
HOPE THROUGH HEALTH

ANNUAL IMPACT REPORT

2014 + 2015

WE ARE THRILLED to present this report highlighting the work of Hope Through Health and our partners in Togo, West Africa. Over the past 18 months our organization has intensified our focus on quality. Driven by our belief that health is a human right, we have worked to improve access to quality care for all individuals, regardless of the latitude and longitude of their birthplace. Thanks to your partnership, Hope Through Health has continued to learn and grow throughout 2014-2015. We would like to express our heartfelt appreciation for your support. We invite you to continue to stand alongside Hope Through Health and our friends in Togo, as we fight to realize our vision of health for all.

In solidarity,

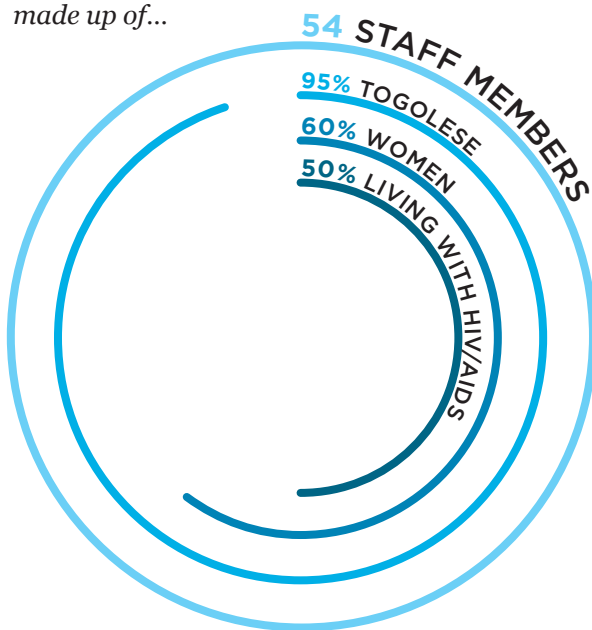


Jennifer Schechter, MSW, MPH, Co-Founder and Executive Director, Hope Through Health

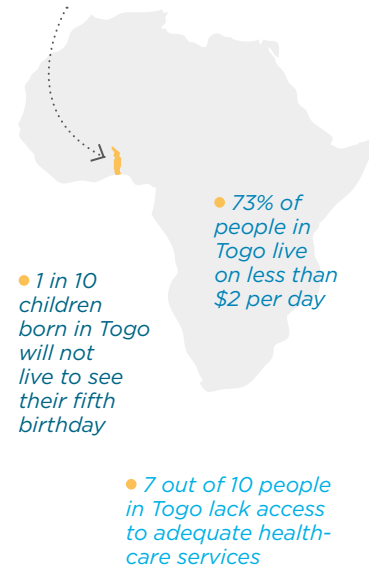
Hope Through Health Is...

► A Community-Led Organization

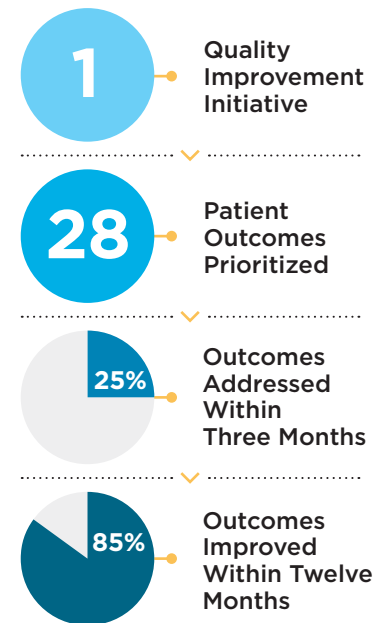
made up of...



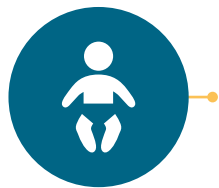
located in Togo, West Africa...



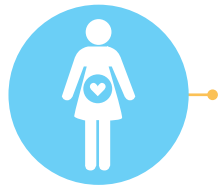
► A Learning Organization



► A High-Impact Organization



100% of Babies
Born HIV-free



100% of Pregnant Women
Attended Support Groups



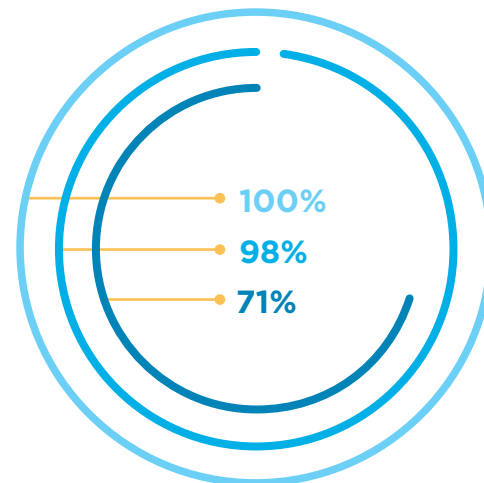
1,208 Patients
Receiving Lifesaving Antiretroviral Therapy



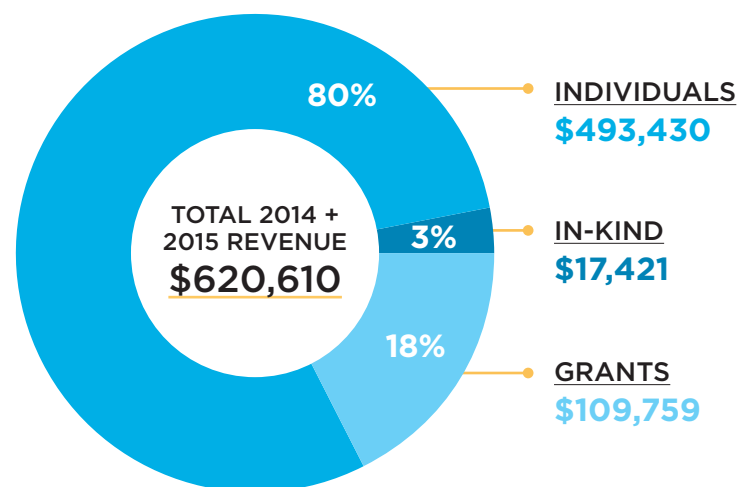
1,646 Patients
Living with HIV Enrolled in Care

Patients on Antiretroviral Therapy

- 100% Retained in Care
- 98% Adherent to Treatment
- 71% Visited by a Community Health Worker



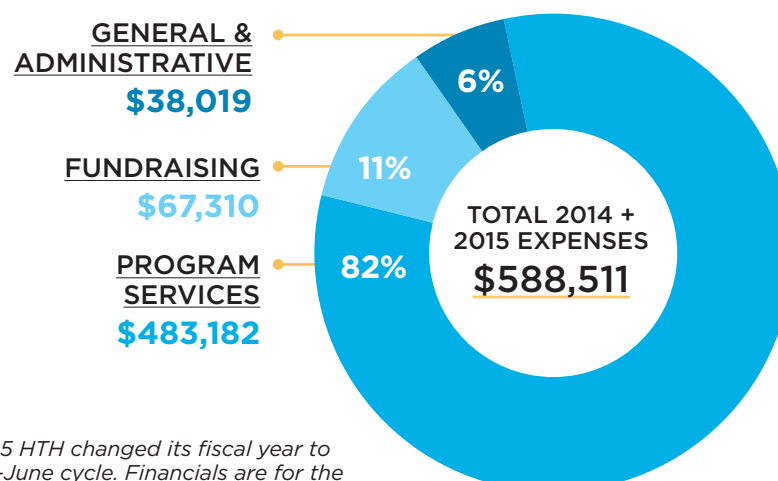
► 2014 + 2015 Financials



GENERAL & ADMINISTRATIVE
\$38,019

FUNDRAISING
\$67,310

PROGRAM SERVICES
\$483,182



*In 2015 HTH changed its fiscal year to a July-June cycle. Financials are for the period January 2014-June 2015

► How to Give

DONATE ONLINE
www.hthglobal.org

SEND A CHECK
Hope Through Health
PO Box 605
Medway, MA 02053

MORE WAYS TO GIVE

- Ask if your company has a matching gift program
- Make a gift in honor of a friend or family member
- Make a planned gift
- Make an in-kind donation
- Organize a fundraiser
- Share this report with a friend