



SOCIAL INNOVATION ECO VILLAGE - ENDUATA(SIEVE)

MASTERPLAN LAUNCH

Concept Proposal (2024)

ABOUT US

Empower and Serve Kenya (EmpServe) is a registered non-profit organization established in 2016. We model our programming on strengthening the grassroots entrepreneurship and innovation ecosystems through programs anchored on empowering youth to be drivers of change.

We run two innovation hubs in Nairobi and Kajiado counties, as well as digital resource centers across five (5) other counties in Kenya. EmpServe envisions becoming a pioneering local organization dedicated to sustainable youth empowerment models, with a strong focus on vulnerable youth, particularly young women in the last mile communities.





AN ICON OF SUSTAINABLE PROGRAMMING

Kajiado County lacks comprehensive community-based infrastructure that promotes innovation, transition, and integration of youth into community development and active change-making. The SIEVE Project presents a comprehensive solution to the challenges faced by Kajiado County's grassroots community. It will address multifaceted issues; integrating skills development programs, community engagement spaces, a residential campus with clear transition pathways, and sustainability initiatives for the youth and the community at large. It is a holistic haven designed to place vulnerable youth and women as well as the community at the epicenter of a transformative programming.

This landmark venture reflects EmpServe's unwavering dedication to sustainable development, community empowerment, and innovation. The envisioned Master Plan encompasses an array of facilities and features, strategically designed to address pressing challenges while cultivating opportunities for growth and positive reformation.

UNIQUE SUSTAINABILITY ADVANTAGE

Greening

**Community
Engagement**

**Off-Grid
Power**

**Community
Owned**

**Research
promotion**

**Regenerative
Ecosystem**

**Economic
Hub**



SIEVE FOCUS AREAS

SKILLING,
LIVELIHOODS &
RESEARCH

COMMUNITY
ENGAGEMENT

BUSINESS
PROMOTION

SUSTAINABILITY
& AGRICULTURAL
SHOWCASE

ECO-TOURISM

PROPOSED FACILITIES



Skilling , Livelihoods and Research

1. Digitally equipped Training Rooms with internet and latest technology
2. **Workshop/Maker-space:** Fostering Community skills in leather, beadwork, textiles, and more.
3. **Research and Exchange:** Offering space for learning, experiments and trials



Community Engagement and Gathering Spaces:

4. **Conference Facility** for meetings, workshops & gatherings.
5. **Co-working Space** for collaboration and entrepreneurship.
6. **Recreational Facility and Fireplace:** A communal space for gatherings.



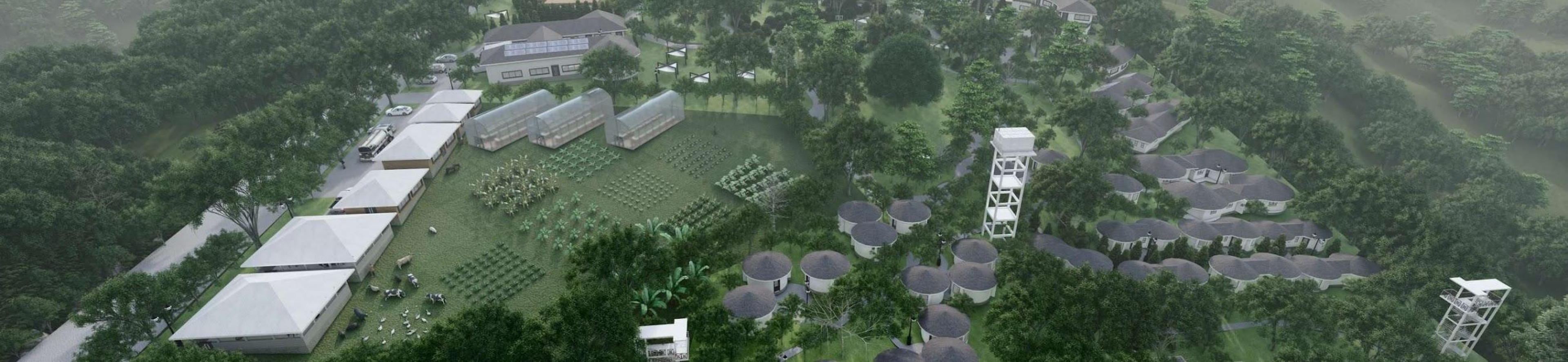
Business promotion and Hospitality

7. **Empower Soko:** Showcasing locally produced art, craft and produce.
8. **Cottages** for residents or visitors participating in training programs.
9. **Kitchen:** Supporting local culinary initiatives and providing nutrition programs.



Sustainability & Agricultural Showcase

10. **Borehole and Community Watering Point.**
11. **Demo Farms:** Showcasing dryland agricultural practices, husbandry, and apiculture.
12. **Landmark**
Symbolizing commitment to sustainable development goals.



SIEVE PROJECTED IMPACT

5,000

Community Members
Impacted Annually

500+

Decent Work
Transitions for
Vulnerable Youth

SOCIAL INNOVATION

ECO-VILLAGE PROJECT TIMELINE

PHASE 1

1 YEAR

Land acquisition
Compliance
Community Assessment
Needs Assessment
Community
Organization
Hydrological survey
Topographical Survey
WRMA Survey
Fencing

5% IMPACT ACHIEVED

PHASE 2

2 YEARS

Watersupply
Demofarm
Greening & Landscaping
Groups Empowerment
Construction on model units
20% training achieved

25% IMPACT ACHIEVED

PHASE 3

2 YEARS

Upscaling Structural
Development
40% functionality

65% IMPACT ACHIEVED

PHASE 4

2 YEARS

Complementary Facilities
Leisure facilities
Health hospital
Conference
35% impact

100% IMPACT ACHIEVED



PHASE 1 COST PROJECTIONS

DESCRIPTION	KES	USD
Land Acquisition	4,200,000	32605
Eco-Fencing	500,000	3880
Government Compliance	100,000	780
Community Organizing (Community Entry, Needs Assessment, Reports)	100,000	780
Surveys (Hydrological, Topographical, Soil Test, Layouts)	300,000	2330
Permits (WARMA)	150000	1160
Initial Infrastructure Setup (Roads, Basic Utilities)	300000	2330
Total	5,650,000	43,865



PHASE 2

COST PROJECTIONS

DESCRIPTION	KES	USD
Water Supply (Borehole, Tanks, Solar Pumps, Community water point)	5000000	38460
Demo Farm (Greenhouses, Irrigation, agri-learning center)	2000000	15530
Restoration Greening & Landscaping	500000	3850
Model Construction (Training Rooms, Office, Community Kitchen, Student boarding facility)	10000000	77630
Equipment Scaling (Workshop Machines, Laptops, etc.)	3000000	23290
Group Empowerment (Training, Seed Funding, Grants)	500000	3850
Personnel (Full-Time Staff & Volunteers) P.A	6400000	49685
Community Engagement Programs (Workshops, Seminars)	500000	3850
Outreach	500000	3850
Total	28,400,000	220,470



PHASE 3

COST PROJECTIONS

DESCRIPTION	KES	USD
Upscaling Structural Development	25000000	194080
Economic Hub (Co-working space, Workshop scaling, Digital, community Marketplace,)	6000000	46580
Expansion of Community Facilities (Library, Study Areas, cultural space)	2000000	15530
Equipment Scaling (Additional 40% Functionality)	5000000	38815
Scale up of Demo Farm(Additional Equipment, Training	2000000	15530
Total	40,000,000	310535



PHASE 4 COST PROJECTIONS

DESCRIPTION	KES	USD
Research Centre	5000000	38815
Health Facility	6000000	46580
Conferencing Facility	5000000	38815
Recreation Facilities (Trails, Games, Parks)	4000000	31050
Chapel	2000000	15530
Recycling Station	1500000	11645
Community Services & Support Programs	1000000	7765
Total	24500000	190200
Overall	98,550,000	765070

WHY ATTEND THE LAUNCH



Shape the Future of Grassroots Innovation

Participate in discussions and provide input on SIEVE's innovative approach to localizing the innovation ecosystem.

Champion Gender Equality

Engage and contribute to our with our initiatives aimed at bridging the gender divide in technology and innovation by creating opportunities for women and marginalized groups.

Co-create Community-Centric Solutions

Collaborate on how SIEVE can integrate the innovation ecosystem within local communities. Your insights and expertise can help shape community-driven projects that promote social change and sustainability.

Network with Innovation Leaders

Connect with a diverse group of stakeholders, including innovators, researchers, and policymakers. Gain insights from experts and collaborate on initiatives that drive sustainable development and community empowerment.

Office Address



W4-EmpServe Social Innovation Hub,
KCDF House – 4th Floor
Chai Road, Pangani

Contact Us



+254758768879



connect@empserve.org



Website:
<https://empserve.org/>



Contact:
+254 758 768 879



Email:
partnerships@empserve.org