

LVD/FC/ASR/3013 / 2021



PLAN OF LAND

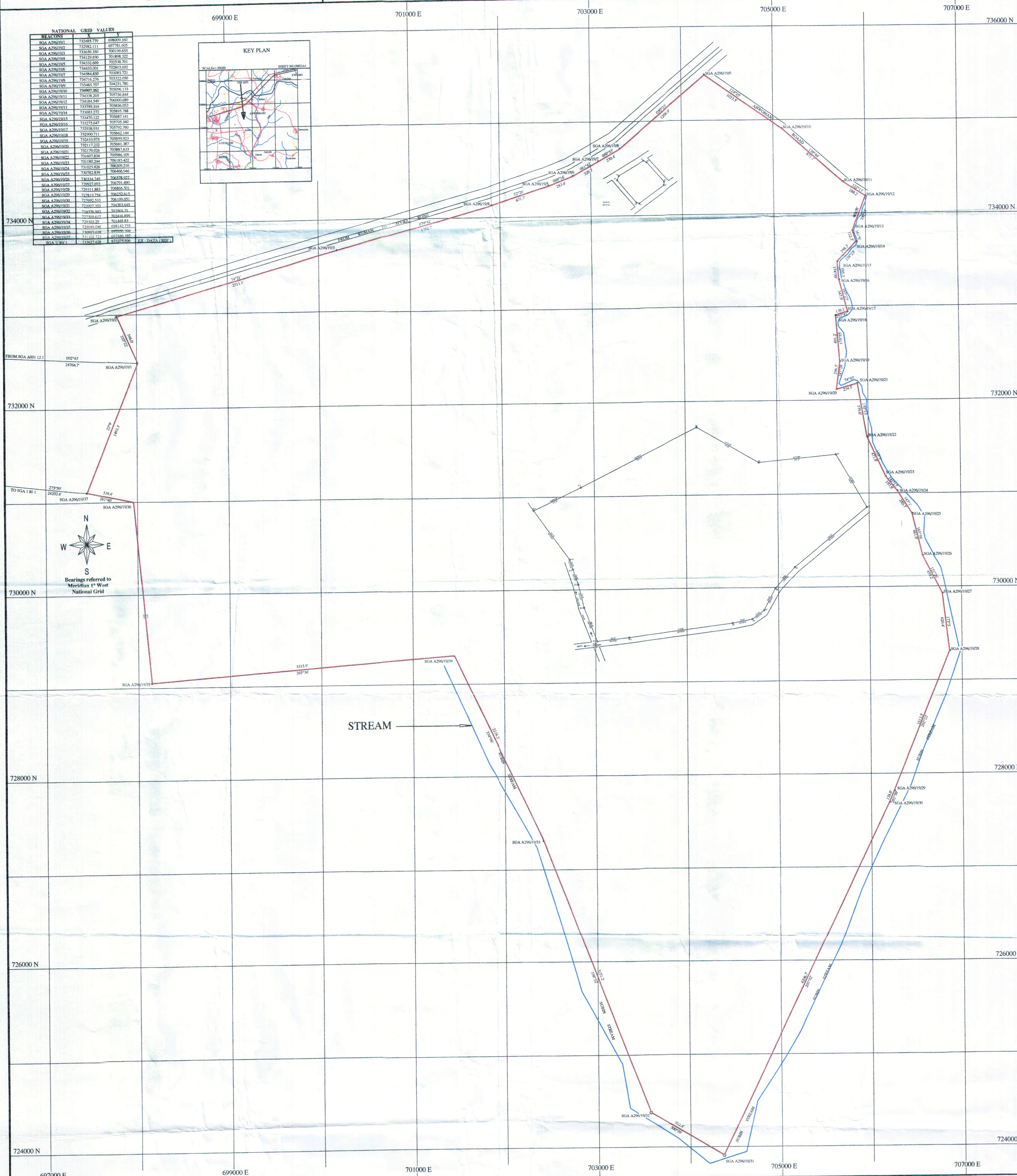
FOR HUAHI ACHAMA TUTUWAA ROYAL FAMILY OF BOADI-GOASO

- Shewn Edged Pink -

Area = 1298.33 Acres OR 525.43 Hect.

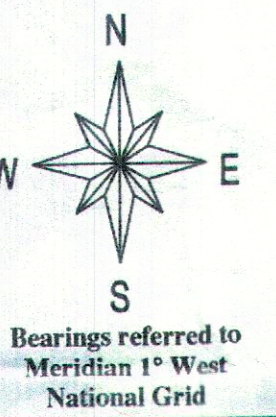
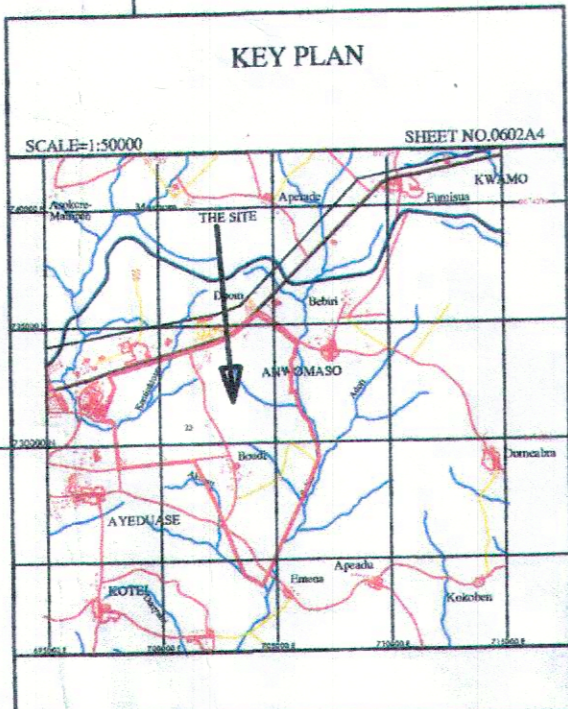
Scale 1 : 5000

LOCALITY BOADI	MUNICIPALITY OFORIKROM	REGION ASHANTI
-------------------	---------------------------	-------------------



NATIONAL GRID VALUES

BEACONS	X	Y
SGA A2961901	732485.729	698000.160
SGA A2961902	732981.111	697731.605
SGA A2961903	733639.330	700190.855
SGA A2961904	734129.930	701896.323
SGA A2961905	734332.669	702538.701
SGA A2961906	734433.001	702871.692
SGA A2961907	734584.830	703081.733
SGA A2961908	734716.276	703222.090
SGA A2961909	734855.757	704251.780
SGA A2961910	734907.262	705096.133
SGA A2961911	734138.305	705756.844
SGA A2961912	734184.549	706000.689
SGA A2961913	733799.316	706486.053
SGA A2961914	734081.272	705825.788
SGA A2961915	733470.122	705687.141
SGA A2961916	733775.647	705775.540
SGA A2961917	732938.031	705793.760
SGA A2961918	732900.311	705662.144
SGA A2961919	732410.975	705690.923
SGA A2961920	732117.232	705661.387
SGA A2961921	733119.026	705887.633
SGA A2961922	731607.834	705986.100
SGA A2961923	731182.344	706185.422
SGA A2961924	731025.826	706309.216
SGA A2961925	730782.839	706466.946
SGA A2961926	730334.309	706578.927
SGA A2961927	729297.693	706791.480
SGA A2961928	729211.883	706866.571
SGA A2961929	728103.754	706923.645
SGA A2961930	727692.533	706109.051
SGA A2961931	727297.153	704360.665
SGA A2961932	728176.641	704866.29
SGA A2961933	727309.612	702416.839
SGA A2961934	727333.32	701483.83
SGA A2961935	726949.046	698141.735
SGA A2961936	726997.038	699996.704
SGA A2961937	726108.271	697646.90
SGA A2961938	725977.628	693375.936



STREAM

APPROVED SEAL

APPROVED BY:

ANTHONY ACKAH Licensed surveyor certify that this plan is faithfully and correctly executed and accurately shows the land within the limits of the description given to me by my client.

Anthony Ackah
ANTHONY ACKAH
LICENSED SURVEYOR NO. 257
LICENSED SURVEYOR No: 257

THE REGIONAL ROAD SURVEY & MAPPING DIVISION
LANDS COMMISSION
ASHANTI REGION
[Signature]
FOR DIRECTOR OF SURVEYS
Regional Surveyor (Ash/R)
Date: 18/12/2020

Date: 18 - 12 - 20