



BETTER LIFE PROGRAM FOR THE AFRICAN RURAL WOMAN

BLPARW

WHO WE ARE



Better Life Program for the African Rural Woman is a non-profit Organization founded in 1987 with a vision to see an emergence of a well-informed, economically and socio-politically empowered African woman participating effectively in the process of national development and the promotion of family values. Our core mandate are Adult Literacy program, Empowerment Support Initiatives.

The Organisation is currently chaired by Hajiya Aisha Babangida whose role is to enhance its mission and vision. The program has recorded outstanding impact at the grass-root level. The Organisation is directed by the Board of Trustees, Management, and Consultants.

VISION

To see an emergence of a well-informed, economically and socio-politically empowered African woman participating effectively in the process of national development and the promotion of family values.

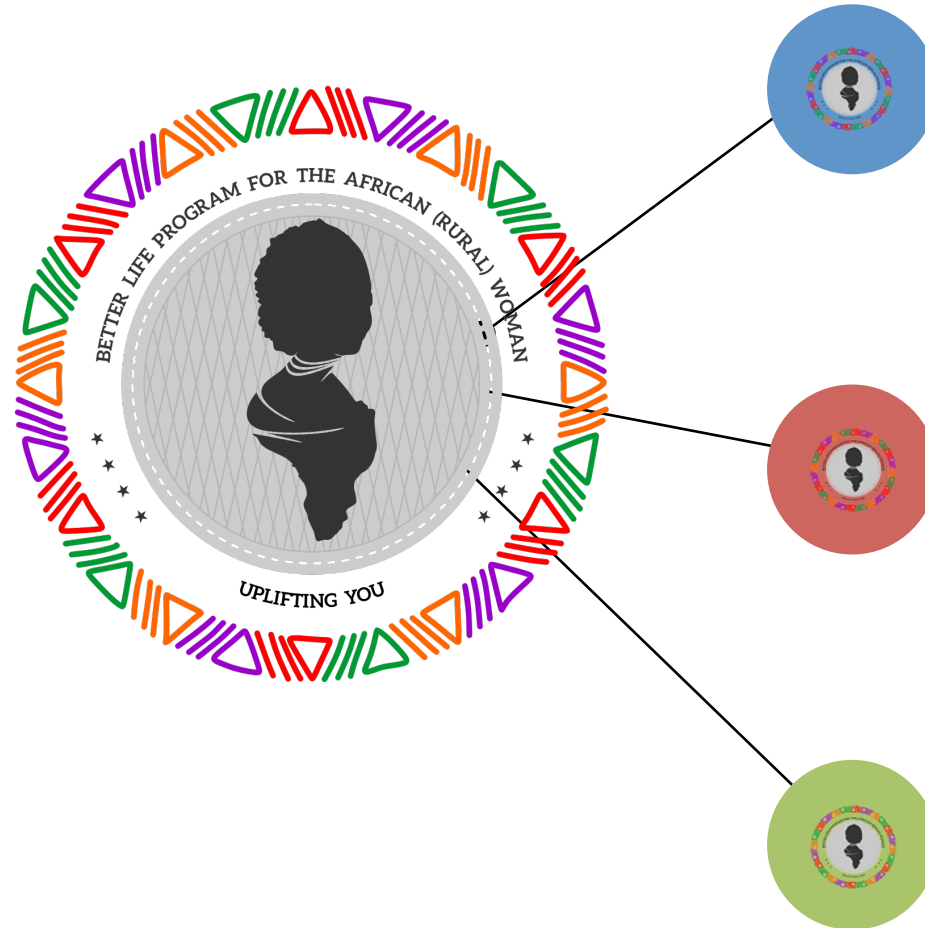
MISSION

To harness global partnership to execute ideas, strategies and methodologies that impact on every aspect of the African Woman.



BLPARW CORE VALUES

WHAT GUIDES US



SUSTAINABILITY

We make deliberate efforts to develop our programs to ensure impact.

INTEGRITY

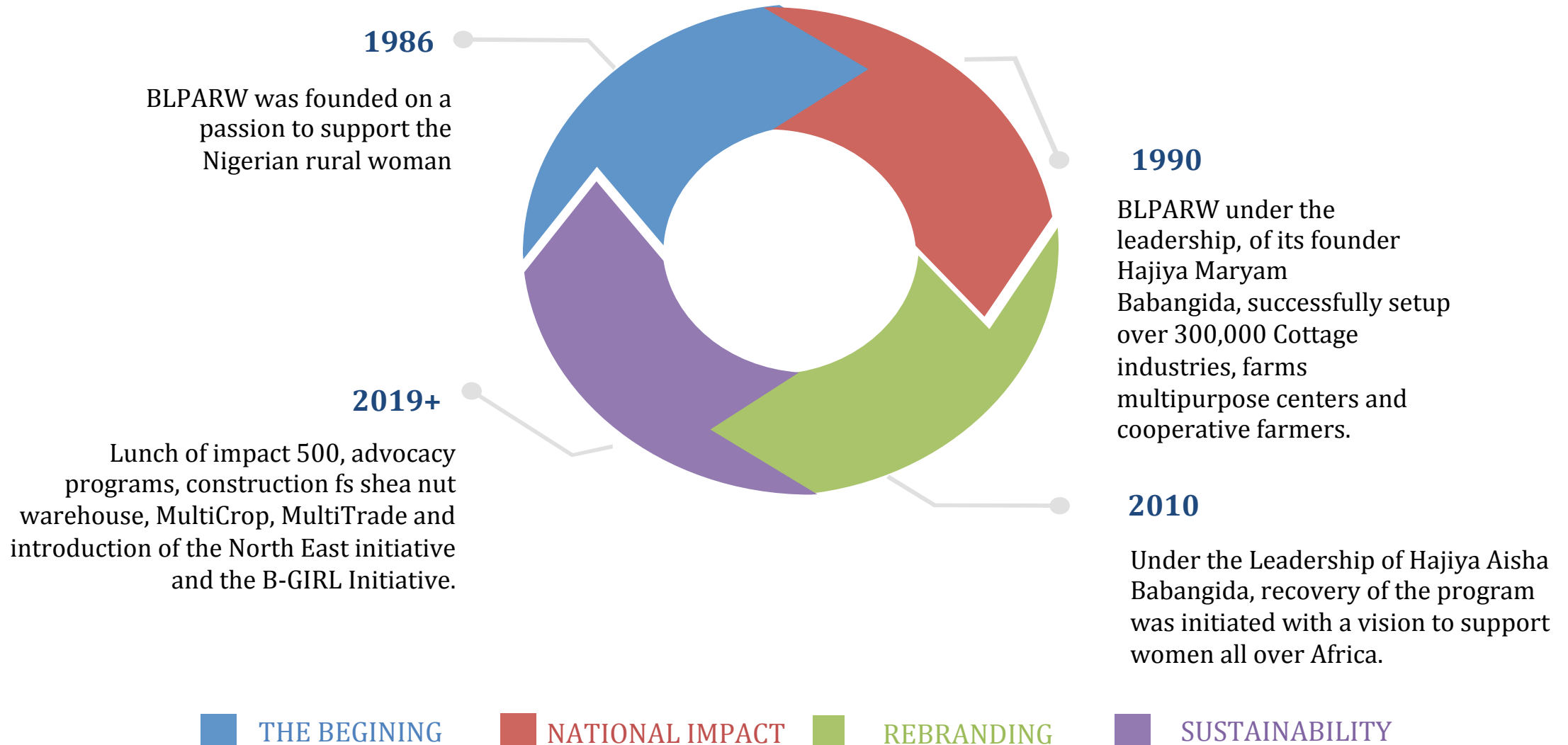
Over the years the organization has upheld integrity and ethics in producing quality programs and partnership.

PARTNERSHIP

Our Partners are crucial to the growth of the organization so as to combine skills and experience across sector to enhance sustainable development effort.

ABOUT BLPARW

THE JOURNEY SO FAR



BLPARW APPROACH

HOW?



BLPARW HAS DEVELOPED PROJECTS TO ENSURE THE DEVELOPMENT OF OUR VISION FOR THE AFRICAN RURAL WOMEN

MULTITRADE

MultiTrade project was created to support women involved in commodity trading. It is proposed to support 5,000 women across Nigeria in 5 Years

IMPACT 500

The Impact 500 would help young women get good employment and become financially independent.



MULTICROP

MultiCrop project is to build the capacities of a 100,000 women in Agriculture to help produce better yield and offer extra income.

SHEA PROGRAM

BLPARW is supporting women in the shea industry with capacity building, infrastructure, access to finance and linkage to market. we intend to expand this project to 15 other locations in Niger State.

MULTI TRADE

WOMEN IN COMMODITY TRADING



BLPARW MASTERCLASS

In this program BLPARW would be supporting women with capacity building via its MasterClass to enhance their productivity.

ACCESS TO MARKET

To ensure sustainability we would facilitate market linkages to ensure maximum profitability

ACCESS TO FINANCE

As part of BLPARW offerings, women under the MultiTrade project would have access to finance in collaboration with its partners.

**5000
WOMEN
EMPOWERED**



SHEA

SHEA SUSTAINABILITY INITIATIVE

INFRASTRUCTURE

BLPARW supports well established cooperatives with storage facility for kernel aggregation, and processing centers

ACCESS TO FINANCE

BLPARW helps to increase the availability of financial services to cooperatives through its financial partners

CAPACITY BUILDING

Training women on the following:
Kernel Aggregation, Cooperative Management, Health & Safety and Warehouse Management

ACCESS TO MARKET

In line with our commitment to upscale the cooperatives, BLPARW also facilitates linkage to market locally and globally



OUTCOME

9000
WOMEN
TARGET

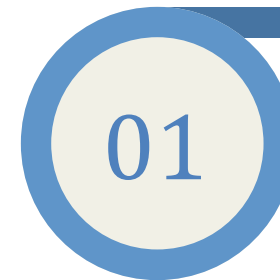
15 LOCATION
INFRASTRUCTURE

IMPACT 500

SUPPORT FOR NIGERIA'S FUTURE

The Impact 500 would help young women get good employment and become financially independent.

STEP ONE
Skills Training



STEP THREE
Employability/Empowerment



STEP TWO
Mentorship

