

IMPACT REPORT



Amplifying Women,
Producing Active
Communities





1

INTRODUCTION

WomanPACT is a new-age millennial movement committed to propelling women towards realising their full potential. As Women Producing Active Communities Together, we champion women's interests locally, provincially, nationally and drive a movement transcending borders, fostering exceptional value within communities.

WHO ARE WE?

WomanPACT is a dynamic civil society organisation founded by South African women. Our mission is to empower women to reach their full potential by advocating for their rights, creating safe dialogue spaces, and fostering collaborations driving positive change.

WOMEN PRODUCING ACTIVE COMMUNITIES TOGETHER





OUR VISION

At WomanPACT, our vision is to shape women's lives with relevance, activism, inspiration, and hope, transcending as a movement that adds exceptional value to their communities.

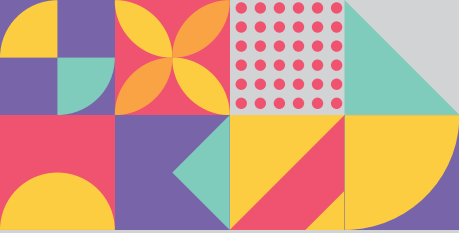
OUR MISSION

Bringing together women from all walks of life to form a PACT, we empower women through economic inclusion, education, and advocacy, harnessing their collective power for social change.

OUR VALUES

- Accessible: Standing united with women from all backgrounds.
- Creative: Tackling challenges with innovative solutions.
- Leaders: Uniting women in purpose and progress.
- Trendsetters: Pioneering new ideas for evolving needs.
- Change-Makers: Committed to tangible results.
- Collaborators: Thriving through cross-sector partnerships.





3

WOMEN PRODUCING ACTIVE COMMUNITIES TOGETHER

OUR PROGRAMS

From capacity building to gender-based violence awareness, our programs span various dimensions, including economic empowerment, social welfare, leadership development, and community building.

OUR IMPACT

WomanPACT's work has made tangible strides, forging partnerships promoting diversity, economic inclusion, and social transformation. We empower women to access education, economic opportunities, and support for their advancement.

WOMAN FOCUS

Community-oriented and diverse, WomanPACT offers a variety of programs catering to women from various backgrounds. We are recognised for our active involvement in empowering women within the KwaZulu Natal Province and beyond.





PROJECTS THAT WORK

Highlighting key impactful projects:

- Share Dignity: Providing dignity packs to young girls in need.
- Take HOPE & Feed A Family: Supporting impoverished households.
- SOFA Sessions: Hosting dialogue sessions for women empowerment.
- Lunch Lady: Creating employment opportunities through cooking skills.
- Skills Programs: Offering computer literacy and career guidance.

4

WOMEN PRODUCING ACTIVE COMMUNITIES TOGETHER



PROGRAMS OVERVIEW

1. CAPACITY BUILDING FOR ECONOMIC INCLUSION

We empower women through skills development and entrepreneurship training. Over 500 women trained annually, resulting in a 30% increase in business startups.

2. SOCIAL RELIEF & WELFARE ASSISTANCE

Providing immediate aid to impoverished female-headed households. Supporting 50 families weekly with essential groceries and fostering community cohesion.

3. GENDER-BASED VIOLENCE AWARENESS & SUPPORT

Raising awareness and providing support networks to combat GBV. Engaging over 150 women monthly in dialogues addressing GBV and its prevention.

4. PERSONAL DEVELOPMENT & CAREER TRAINING

Equipping women with skills for personal growth and career advancement. Offering free basic computer literacy and career guidance, resulting in 28 women placed in permanent employment annually.

5

WOMEN PRODUCING ACTIVE COMMUNITIES TOGETHER



5. COOPERATIVES & ECONOMIC ACCESS OPPORTUNITIES

Promoting economic inclusion through initiatives like #LunchLady.

Empowering 65 women through cooking skills, catering services, and job placements.

6. FEMALE LEADERSHIP PROGRAMS

Nurturing leadership potential across diverse sectors.

Encouraging women to take leadership roles, impacting over 50 aspiring female leaders annually.

7. YOUNG GIRLS & INTER-GENERATIONAL EXCHANGES

Empowering the next generation through leadership training and mentoring.

Impacting 200 young girls monthly through leadership and empowerment sessions.

8. SOCIAL COHESION & COMMUNITY BUILDING

Fostering unity and collaboration among diverse communities.

Hosting symposiums, gatherings, and dialogues to promote constructive engagement.

6

WOMEN PRODUCING ACTIVE COMMUNITIES TOGETHER





7

WOMEN PRODUCING ACTIVE COMMUNITIES TOGETHER

STATISTICAL IMPACT

Capacity Building:	30% increase in startups due to training.
Social Relief:	Supporting 50 families weekly.
GBV Awareness:	Engaging 150 women monthly in dialogues.
Career Training:	28 women placed in permanent employment annually.
Economic Access:	Empowering 65 women through #LunchLady.
Leadership Programs:	Impacting over 50 aspiring female leaders annually.
Young Girls Empowerment:	Impacting 200 young girls monthly.



SUCCESS STORIES

Nolah Naidoo a single mother, started her business after capacity-building training, now supporting her family independently.

Sindisiwe Khumalo, found employment after computer literacy training, boosting her confidence and career prospects.

Jane, a single mother, started her business after capacity-building training, now supporting her family independently.

Sarah found employment after computer literacy training, boosting her confidence and career prospects.





16

WORK WITH US

Our success relies on dedicated support. Join WomanPACT, connect with our movement, support our causes, and contribute to a world where women rise collectively and authentically.

CONCLUSION

WomanPACT's comprehensive programs have made a tangible impact, fostering economic inclusion, empowering women, and fostering social cohesion across diverse communities. Through our initiatives, we continue to amplify women's voices and transform communities, solidifying our commitment to a world where women rise collectively.

WOMEN PRODUCING ACTIVE COMMUNITIES TOGETHER





Phoenix Youth Center,
Whetstone, Phoenix, Durban,
KwaZulu Natal, South Africa



Pamela Padayachee
+27 72 477 7196



+27 31 500 4723



admin@womanpact.com

Our Social Media Platforms bring together like-minded women,
fostering mutual support and understanding. To find out more
about WomanPACT, Connect with us on Facebook:

 [@AWomansPACT](https://www.facebook.com/AWomansPACT)