

A young boy with dark hair and a white t-shirt is looking out of a window in a rustic, weathered building. The window frame is made of light-colored wood and has a screen. The boy is leaning on the windowsill. The background is dark, suggesting an interior space. The overall scene is set against a purple background on the left side of the image.

Kidasha
making every child matter

Impact Statement 2025

Introduction

In a year overshadowed by political uncertainty and relentless economic pressure, Kidasha has remained a constant source of protection, opportunity, and hope for children growing up in chronic poverty in Nepal's urban slums - supporting 13,074 children and young people over the past 12 months.

Despite funding constraints and rising operational costs, our programmes have continued to deliver meaningful change - not only transforming the lives of individual children but strengthening the systems that shape their futures.

Throughout 2024/25, Nepal faced mounting economic, social, and climate-related pressures: persistent inflation, reduced international aid, and cuts to essential services. Child protection and welfare programmes were among the hardest hit, heightening risks such as child labour, school dropout, and early marriage. Yet despite these challenges, I couldn't be more proud of the impact Kidasha is helping to create - impact that reflects the courage of the children we serve and the unwavering commitment of our team and everyone who works alongside us to ensure safer, brighter futures for Nepal's most vulnerable children.



Janice Miller
Chief Executive, Kidasha



**A year of progress,
a legacy of change.**



Innovate

We co-design and pilot solutions with children and communities, refining our approach through ongoing valuable lessons learned.



Incubate

We scale impact by strengthening partners, mobilising resources, and enhancing local services.



Advocate

We turn evidence into action, influencing policy and embedding proven solutions to transform local and national systems.

The children we support face neglect, abuse and exploitation as a norm. Too often unseen and unheard, they still deserve futures full of safety, dignity, and opportunity. Together with our partners, we help the most excluded children move beyond disadvantage.

Rooted in the communities we serve, our teams work with local organisations and government to create practical, lasting solutions. We gather evidence to scale what works - improving wellbeing, access to learning and employment, and protection from harm. Our work focuses on four main areas:

Responsive, Safe and Inclusive Schools

Many children in Nepal's poorest communities do not finish school due to poverty, gender norms, and low-quality teaching. Kidasha uses life skills education, team sports, and engaging teaching methods to boost attendance, confidence, and aspiration.

Protection Services

Children in urban slums face threats like abuse, child labour, early marriage, and trafficking. Kidasha provides outreach, rescue, rehabilitation, and family support, including safe shelter when needed. We help children return to safe homes, access education, and build the foundations for a safer, brighter future.

Learning & Livelihoods

Poverty often pushes youth into exploitative work or unsafe migration. We help out-of-school children and vulnerable youth access education, apprenticeships, business training, and safe employment - opening pathways to economic security and brighter futures.

Community Strengthening

Child protection in Nepal is critically under-resourced. Kidasha strengthens government systems and empowers communities through child-friendly safe spaces (hubs), local volunteers, and youth-led initiatives, creating sustainable, community-led protection networks.

- **Second poorest** country in Asia.
- **Fourth most climate-vulnerable** country in the world.
- **20% of population** below national poverty line (\$545 pa.).
- **40%** live in urban areas of which **49% live in slums**.
- **1.1m children** engaged in child labour.
- **770,000 children** (5-12 years) are out of school.
- **24% of poorest** do not complete primary education.
- **27% of women** experience intimate partner violence.
- **35,000 victims** of trafficking p.a.
- **35% of girls** marry before the age of 18.
- **c.700,000 youths** migrate abroad each year, the majority as low-paid labour in the Gulf.



Our impact at a glance . . .

- **440 children** in crisis provided with intensive support through case management.
- **201 street-connected or working children** reintegrated with their parents or extended family.
- **241 families** in the direst circumstances received intensive support to transform their socio-economic situations.
- **2,027 children and young people** supported into education, training or employment.
- **1,413 children** benefitted from remedial education delivered through **16 community hubs**.
- **10,000 children** benefitted from our life skills and sports education initiatives.
- **700+ local volunteers** were mobilised to help deliver learning, awareness and knowledge building initiatives within **109 of the poorest slum communities**.
- **95 government schools** (including **220 teachers**) continued to receive training/coaching to improve teaching practices and be more responsive to the needs of marginalised children.
- **42 staff** from our three local implementing partners received ongoing coaching and support to improve effectiveness, impact and governance.



“We’re learning from each other, and the children are more confident than ever.”

Focal Teacher, Pokhara

Building Life Skills

Kidasha’s Life Skills Education (LSE) programme designed to build resilience, motivation, and self-awareness, continued to equip children with the tools to navigate life’s challenges - both inside and outside the classroom.

This year **5,809 at-risk teenagers** benefitted from LSE delivered by our facilitators and a further **5,000** from the course being delivered by teachers trained by Kidasha. Among participants there was **155% increase** in knowledge on issues such as protection, sexual & reproductive health and mental wellbeing.

In Pokhara:

- LSE is now formally incorporated into the local curriculum for Grades 6-8.
- **160 trained teachers** are delivering the curriculum in **80 government schools**.
- The development of **12 local master trainers** has enabled a sustainable peer-learning model to be fully embedded in the Pokhara Metropolitan City education system.

In Butwal:

- The local education authority has agreed to adapt the local curriculum to incorporate LSE.
- **30 teachers** are now delivering LSE independently in **15 schools** with on-site support from our facilitators.

Confidence through Play

Our sports programme continued to be mainstreamed in **15 schools** in Butwal. **28 focal teachers** trained in innovative coaching methods, including safeguarding and inclusion, have been delivering physical education and sports sessions alongside project facilitators benefiting **2,500 students** weekly.

Partnerships established with local sports associations enabled over **1,000 children** to benefit from extracurricular specialist coaching in volleyball and cricket. All schools involved in the programme now host annual sports meets, providing students an opportunity to showcase their talent, build confidence, and stay active.

Our Breaking Boundaries cricket programme in Pokhara, a partnership with the MCC Foundation, has expanded its reach and deepened impact. During the year, **1,654 children** from **20 schools** regularly participated in training. The annual **Breaking Boundaries Championship** involved **600 children** (50% girls), **66 matches**, and over **500 spectators** celebrated inclusion and community pride.



“Sport has become a way for children to feel seen, valued, and safe.”

Sports Focal Teacher, Butwal





“The training helped me see my role not just as a teacher, but as a mentor.”

Focal Teacher, Pokhara

Inclusive School Governance

A key element of our engagement with schools is strengthening the involvement of parents and children in governance, ensuring that schools understand and respond to their needs. This year:

- We oriented **27 School Management Committees** and **Parent Teacher Associations** on the value of holistic education, with a particular focus on safeguarding, life skills, and physical education.
- Parent counselling sessions were conducted in **35 schools**, reaching **1,065 parents** and encouraging more active involvement in their children’s learning and collaboration with teachers.
- Through interactive sessions in **15 schools**, we brought together police, ward offices, and health workers, enabling **1,267 children** to build direct connections with essential front-line services.
- A total of **29 focal teachers** received training to enhance motivation, introduce innovative teaching methods, and support personal development.

To date, **60** of the **95 schools** we work with have established Grievance Committees and anonymous reporting mechanisms to encourage children and parents to report concerns.

In their own words: the Amar Secondary School, Butwal

Head Teacher

In the past two years, we have enrolled more than 100 new students. Strengthened leadership and improved governance have improved the quality of education. As a result, local government has developed trust in our school, safer buildings are being constructed, and teacher motivation is continually improving.

Chair, Parent Teacher Association

Regular life skills classes, sports coaching, and the increased trend of teachers and school management members enrolling their own children in this school have transformed the school's image and strengthened community trust.

Teacher

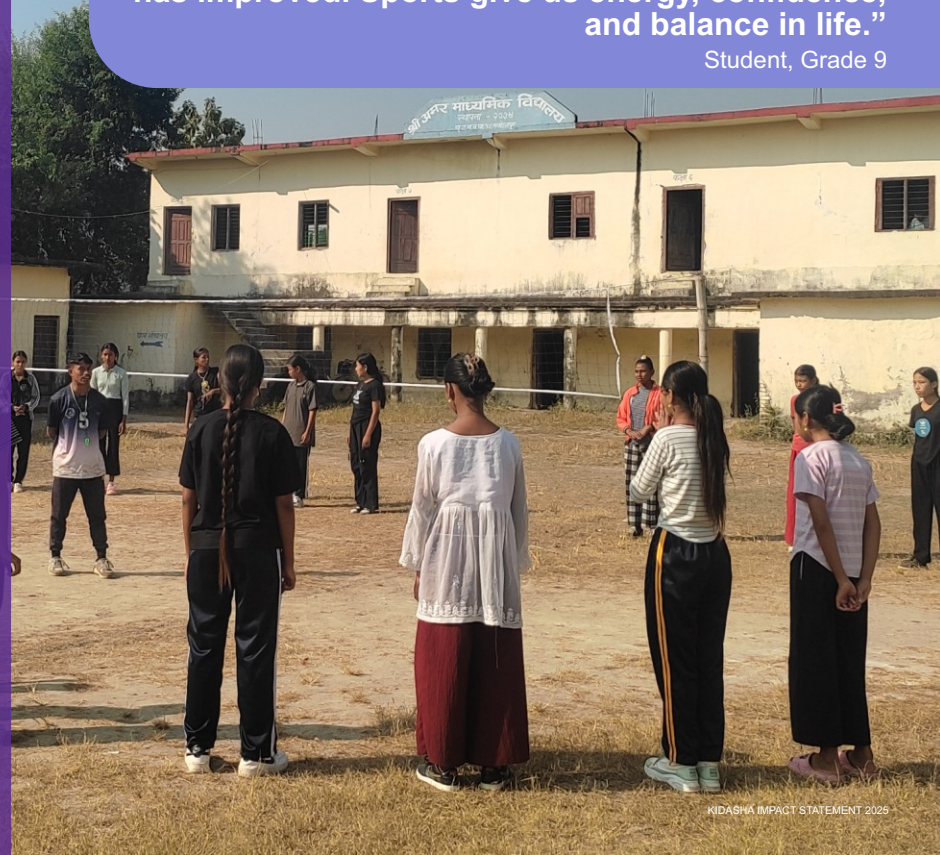
In the past, although the school provided menstrual pads girls felt shy and uncomfortable asking for them. Over the past three years, this has changed significantly. Now, girls feel confident talking openly about menstruation and can ask any teacher for a pad when needed.

Chair, School Management Committee

The project helped to clarify our roles and build our confidence as an effective management committee. We used to focus on physical infrastructure but came to understand that quality education also requires strong human resources. Over the past year, we have prioritised building teacher and school management capacity, leading to visible improvements in teaching quality and the overall learning environment.

“Many people say that taking part in sports negatively affects our studies, but this is not true. When we play sports, we feel happy, active and refreshed and it helps us concentrate better. Since I started playing sports, my academic performance has improved. Sports give us energy, confidence, and balance in life.”

Student, Grade 9



“The hub is more than a building - it’s where our children learn, grow, and feel safe.”

Parent, Pokhara



Creating Safe, Inclusive and Empowered Spaces

Kidasha’s community hubs continued to serve as vital safe child-friendly spaces for learning, support, and civic engagement. During the year:

- **967 children** participated in hub activities - homework support groups and other recreational and cultural activities such as dance, quizzes, games, and sport.
- **Three youth club members** were active in each hub, fostering peer leadership by rotating homework support duties and organising civic events.
- **16 Parent Support Groups** (325 members, 95% women) met regularly to discuss parenting, rights, well-being, and financial literacy.
- Centre Management Committees and youth leaders received training in sustainability, leadership, and documentation.
- **250 parents** benefitted from facilitated exposure visits to local services.

As a result:

- **93%** of school-attending children enrolled in homework classes.
- **100%** end of year exam pass rate among children regularly attending homework classes.
- Children’s knowledge of protection rights increased from 29% to **81%**.
- **84%** of children reported they are now confident to report child protection concerns.

Inspiring Children and Young People as Champions for Change

Working across more than 100 slum communities, Kidasha has strengthened grassroots participation by supporting the creation and operation of **38 community child clubs**, **54 children's forums** within the local governance structures, and over **100 adolescent girls' groups**, engaging over **2,000** children and young people.

"Before we didn't know how to speak up. Now we help others find their voice too."

Peer Educator, Pokhara

Our community-based approach is powered by more than **700** trained community volunteers, including **200** motivated young people, who act as champions for children's rights and wellbeing. These volunteers operate community hubs, raise awareness on protection issues, and help families navigate and access essential local services. Their commitment is driving local action, strengthening early identification of children at risk, and creating safer, more supportive environments for children and adolescents.



"We're not just helping with homework - we're leading change in our community."

Youth Club Member, Pokhara



“Since the homework classes were introduced we have observed significant improvements in the children’s reading and writing abilities.” Youth Club Member, Pokhara

Apsara’s Story

“My name is Apsara. I live with my parents, two older sisters, two younger sisters, and my younger brother. Life at home is really hard. My father struggles with alcohol and often hurts my mother, which makes our home a scary and stressful place. Because we have so little money, my two older sisters were forced to marry when they were just 13 and 14. Every day feels like a struggle to survive.

Being weighed down by household chores and usually not having even the basic school supplies I needed, I felt hopeless and despite loving learning, thought about giving up school many times.

Then I found a nearby community learning centre. A kind Community Advocate listened to my story and encouraged me to join. For the first time, I felt supported. I received school materials, guidance, and the encouragement I had been missing for so long.

Now, I’m proud to say I came third in my final exams - something I never imagined possible.”



Rehabilitation, Reintegration and Rights-Based Support

Our child protection services in Pokhara continue to operate at full capacity, providing vital support to street-connected and working children. Through ongoing case management of over **400 children** at any one time and collaboration with families and local authorities, we help children transition to safer, more stable environments. During the year:

- **201 children** were reintegrated or reunified with their families.
- **241 families** received intensive socio-economic support to improve conditions for their children.
- **44 children** accessed residential rehabilitation services.
- **116 children** received structured workplace support to improve safety and wellbeing.
- **189 children** and adults successfully obtained legal identity and/or access to social entitlements.



“Every child we reintegrate is a step towards breaking the cycle.”

Frontline Social Worker, Pokhara

“We’ve gone from watching decisions happen to helping shape them.”

Ward Child Focal Person, Butwal



“We’re seeing real shifts in how local governments are prioritising children’s rights.”

Child Protection Advocate, Pokhara

Strengthening Child Protection Systems

Kidasha continued to strengthen child protection systems, embedding safeguarding practices in communities while influencing long-term policy at city and provincial levels. This has helped create safer environments for children, and empowered communities to identify, prevent and respond to harm.

In Pokhara and Butwal, we continued working with all 52 government wards, providing support to statutory Child Rights Committees and to ward Child Focal Persons previously trained by the project. In our target communities, volunteers and peer educators delivered child protection awareness sessions using Kidasha’s eight-module learning programme, with early signs of increased community reporting and referrals.

In Pokhara, we supported the development of a comprehensive five-year Child Rights Strategic Plan which has now been formally adopted by the Pokhara Metropolitan Executive Committee – one of the first local authorities in Nepal to do so.

We also produced a Child Protection Handbook for Ward officials, mobilised the District Child Rights CSO Network to monitor violence, and supported the establishment of a Provincial Parliamentary Forum for Child Rights to strengthen political accountability.

Binod's Story

Binod, now 15, was separated from his father at the age of two when his mother left with another man. He endured an unstable childhood marked by violence and alcohol, eventually moving with his mother to live with another new partner in a rural village. Tragically, Binod's mother passed away when he was 11, leaving him alone. On his own he returned to Pokhara in search of his stepfather but was found on the street and referred by the local community and police to our rehabilitation shelter.

Over the next two years, Binod received care, attended school, and pursued his passion in football. His social worker persistently sought his biological family, and this year, after identifying his stepfather in Pokhara, managed to trace Binod's birth village and locate his real father. Emotional reunions followed, with Binod spending school holidays in the village before deciding to return and live there permanently. Now reconnected with his family and attending the local school, Binod has made new friends and is happily fully integrated into the community where he was born.




Breaking Barriers to Learning

This year we continued supporting children and families to overcome the practical, familial and financial challenges that hinder enrolment, attendance and retention, helping the poorest children attend and succeed in mainstream education. For working adolescents unable to attend school, our bespoke Functional Learning course provided practical literacy and numeracy skills relevant to daily life, boosting confidence and supporting their pathway into positive livelihoods.

Over this year:

- **1,754 children** received essential educational materials, including uniforms, shoes, bags, and stationery, enabling them to go to school.
- **1,413 children** attended remedial education classes led by local volunteers across our community hubs.
- **55 adolescents** working in garages and workshops completed our Functional Learning programme.
- Career counselling was delivered to hundreds of young people who Kidasha had supported through secondary school.



“My elder son was very shy, introverted, and struggled to pass his exams. Just three months after joining the programme, he made remarkable progress - he passed his final exams with good grades. As parents, we couldn’t provide much help with his studies, and now we are so happy to see him and many other children achieving real success in their education.”

Parent

Pathways to Possibility

Our livelihoods work continues to evolve - with stronger supervision, individual tailored support, and clearer pathways for young people and families. From career counselling to vocational training and business mentorship, every intervention is shaped by individual needs and long-term potential.

- **80 young people** participated in workplace readiness sessions.
- **40 parents** and **young people** identified through our wider work received basic business training.
- **236 young people** were supported to access vocational training.
- **37 youth** received micro-business start-up grants.



“Proper training and clear guidelines means we can offer real pathways - not just short-term fixes.”

Frontline Worker



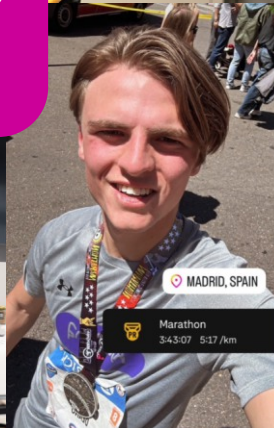
“Sandip’s story moved me deeply, and I felt compelled to act.”

Supporter, BBC Radio 4 Appeal



“I know how much this support means. Fundraising for Kidasha is part of my way of giving back and staying connected.”

Ashish Shrestha, Marathon Runner



In the Community

Throughout the year, supporters channelled their creativity, energy, and generosity into meaningful action. Singers, runners, cyclists, paddlers and rowers not only raised vital funds but also helped build awareness of the realities facing children in Nepal’s urban slums.

These community efforts were strengthened by online campaigns, including our BBC Radio 4 Appeal presented by broadcaster Mary Nightingale, which raised more than £50,000.

We are determined to build on this year’s momentum by encouraging even more people to get involved - from students and sports clubs to diaspora communities and local businesses. We welcome new voices and fresh ideas from anyone who believes in the power of collective action to raise awareness, increase funds and extend our impact.

Partnering for Impact

Partnerships with trusts, foundations and CSR programmes are vital to Kidasha’s sustainability, providing essential funding, extending our reach, and strengthening advocacy for children living in extreme urban poverty.

We are extremely grateful for the continued commitment of our long-term partners, including the Manan Trust and the Sir Ernest Cassel Educational Trust, whose support allows us to plan forward with confidence. We also look forward to developing new partnerships with organisations that share our vision of safer, brighter futures for children in crisis.

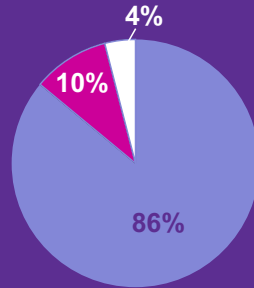
Financials

Total income: £407,220

Total expenditure: £431,028

Note: Deficit funded by income received at end of previous year.

- Charitable activities
- Fundraising
- Support and Governance



Beneficiaries

Working Area	Children at Risk	Families and Service Providers	Total
Pokhara	6,284	2,279	8,563
Butwal	6,790	2,835	9,625
Total	13,074	5,114	18,188

Credits and References

Page 3:

1. USAID 2024: [usaid.gov/nepal/economic-growth-and-trade](https://www.usaid.gov/nepal/economic-growth-and-trade)
2. World Bank 2024: data.worldbank.org/indicator/BX.TRF.PWKR.DT.GD.ZS?locations=NP
3. International Labour Organisation 2022: ilo.org/media/367851/download
4. UNICEF Nepal 2024: [unicef.org/nepal/reports/every-child-protection](https://www.unicef.org/nepal/reports/every-child-protection)
5. Nepal Central Bureau of Statistics 2021: censusnepal.cbs.gov.np/results
6. UN Habitat 2018: data.unhabitat.org/pages/housing-slumsand-informal-settlements
7. Nepal National Statistics Office 2024: nsonepal.gov.np/content/12061/12061-nepal-living-standards-survey/
8. Asian Development Bank 2023: adb.org/where-wework/nepal/poverty
9. German Watch 2019: [germanwatch.org/en/16046](https://www.germanwatch.org/en/16046)

Kidasha is a UK-registered charitable organisation which has been implementing projects in partnership with local non-governmental organisations in Nepal since 1997.

Our programmes are governed by a Project Agreement with the Government of Nepal's Social Welfare Council signed on 3rd July 2025.

Impact and Sustainability

As we look to the year ahead, we remain committed to deepening our impact and strengthening the foundations that make long-term change possible. The incredible progress we've made over the last couple of years - including 16 hubs successfully handed over to communities and our life skills programme now delivered independently in local schools - demonstrates what can be achieved when local ownership and partnership thrive. These transitions not only validate the strength of our approach but also release capacity to respond to growing demand from other communities, schools, and local authorities.

At the heart of this momentum is our investment in young people themselves: equipping them with the confidence, skills, and opportunities to become catalysts for positive change in their families and communities. Yet, as families continue to struggle with rising costs and tightening incomes, the need to protect the most vulnerable children has never been more urgent - and the opportunity to make a meaningful difference has never been greater.

Looking ahead, our focus will be to deepen our impact by replicating and adapting our work in collaboration with communities, schools and local authorities in new areas, and continuing to strengthen local services, governance, and



partner capacity. In a volatile global environment, we recognise the need to remain mindful of risk and sustaining our momentum will need us to diversify our income streams, explore new opportunities across Asia and Europe, and expand our network of ambassadors and volunteers to help amplify our reach.

Together, we will continue to engage, advocate, and share, ensuring that every step forward is both sustainable and transformative.



Our Values

Our values are more than words - they guide our work at every level and keep us grounded in what really matters: **giving every child the chance to grow, thrive, and shape a better future.**

Equity - Every child and their situation is unique. We ensure that our support responds to children's real needs.

Perseverance - We do whatever it takes to achieve lasting change. We don't shy away from tackling complex problems.

Agility - We are nimble and flexible. We rapidly adapt to face new challenges head on.

Honesty - We tell it how it is, even when it's not what someone wants to hear. That way we remain true to the children and communities we support.

Humility - We focus our efforts on achieving real impact and addressing children's real needs. We tell their stories, not ours.



kidasha
making every child matter

kidasha@kidasha.org
www.kidasha.org

UK Registered Office:
10 Kingsgate Place, London NW6 4TA
Tel: +44 (0) 20 3026 5063

Nepal Office:
Radha Bhawan,
Gopal Jee Marga, Pokhara-04
Tel: +977 (0) 61 580002

Registered UK Charity No. 11006156
Company No. 05223851