

# Empower Life Project – Progress Report

---

Date: May 06, 2025

## Introduction

We express our sincere gratitude to all individuals and organizations supporting the Empower Life Project. Your continued partnership has been instrumental in driving progress in Northern Uganda, especially in hard-to-reach areas such as Kitgum and Mucwini. Despite notable strides, our recent field assessments underscore the urgent need for renewed support to address ongoing challenges that hinder educational outcomes. Encouragingly, funds raised so far have enabled critical planning for upcoming construction efforts, laying the groundwork for tangible change.

## Key Progress Highlights

- **Stakeholder Engagement:** Throughout 2024 and into early 2025, JLOF teams conducted visits to partner schools in Kitgum and Mucwini. These visits facilitated productive dialogues with school administrations, PTAs, and community leaders to collaboratively identify key challenges and develop actionable solutions.
- **Community Mobilization:** Despite ongoing financial challenges, parents have actively pledged support for infrastructure projects by contributing bricks and water. Brick production is already underway, underscoring the community's strong commitment and ownership of these initiatives.
- **Environmental Initiatives:** Previous tree-planting exercises have yielded tangible positive outcomes, highlighting our capacity to drive sustainable environmental change, especially when provided with the necessary support.

## Ongoing Challenges and Support Needs

### 1. Teacher Housing

*Issue:* Some teachers sleep in classrooms due to lack of housing.

*Need:* Build 4 staff units – \$5,000 each (\$20,000 total).

### 2. Learning Facilities

*Library:* Inactive due to no electricity.

*Solution:* Install solar panels – \$2,000.

*Furniture:* Cupboards needed for early grade classrooms – \$500.

### 3. Student Retention

*Issue:* Enrollment dropped from 868 to 358 due to hunger and long treks to school.

*Need:* Launch feeding programs and provide bicycles.

### 4. Sanitation & Health

*Issue:* Girls miss school due to lack of menstrual hygiene support; some latrines are unusable. *Need:* Build functional washrooms and distribute hygiene kits.

## Community Commitment

In the communities of Mucwini, parents and local leaders are not waiting on change, they are building it. Despite financial hardship, families have pledged bricks and water for school construction projects, proving their deep commitment to improving education for their children.

This kind of local ownership is powerful. But to turn these efforts into fully realized classrooms and learning spaces, the community needs support they cannot provide alone. Materials like cement, roofing sheets, solar equipment, and educational supplies must be sourced externally.

Your support through GlobalGiving can bridge that gap, honoring the determination of these parents while ensuring students have safe, well-equipped places to learn. When local action meets global generosity, real and lasting change becomes possible.

## Call to Action

Your support is now more crucial than ever. By contributing to this cause, you can help address systemic challenges and lay the groundwork for sustainable, high-quality education. Every effort, whether through donations, organizing fundraising events, or volunteering your time and expertise, every effort you make brings us closer to creating lasting change.

We invite you to join us in empowering communities and changing lives. Here are some ways you can get involved:

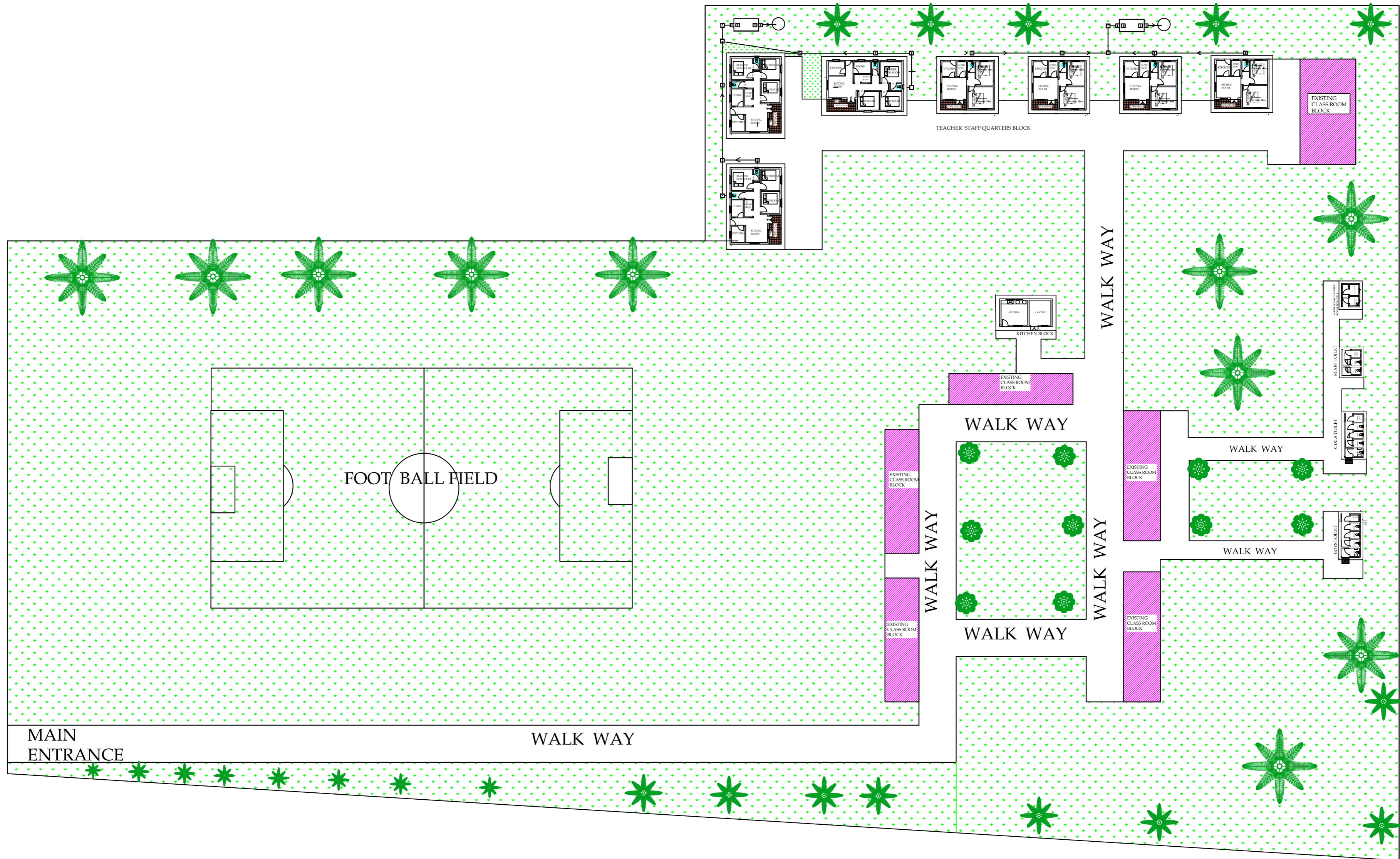
- **Donate:** Consider making a one-time or recurring donation to sustain our programs and initiatives. Visit <https://www.globalgiving.org/projects/empower-life-inclusive-quality-education/> to contribute.
- **Organise Fundraising Events:** Mobilise resources and raise awareness by organising fundraising events. [Empower Life Fundraiser](#)
- **Volunteer Your Time and Expertise:** Share your skills to help us map and write grant applications. Reach out to us at [info@jlof.net](mailto:info@jlof.net).

Together, we can create lasting change and provide students and their families with the education they deserve. Your involvement makes a tangible and meaningful difference.

**We deeply value your commitment and look forward to continuing this impactful journey with you.**

**Thank you for making a difference!**

EXISTING ROAD



THE LAY OUT FOR PAJONG PRIMARY SCHOOL