



MOBILIZATION TOWARDS LEADERSHIP FOR WOMEN AND YOUTHS DEVELOPMENT INITIATIVE (MOLDEV)

PROJECT SITUATION AND IMPLEMENTATION REPORT

PROJECT TITLE:

RESTORE HEALTH CENTER TO 5000 VILLAGERS IN NIGERIA

September 25, 2025

PROJECT BRIEF

For decades, the rural community of **Kuladhakni** in **Shani Local Government Area, Borno State, Nigeria**, has lacked adequate access to basic healthcare services. Families have endured preventable illnesses, and mothers have faced the dangers of childbirth without medical support.

In **2017**, **MOLDEV** brought a ray of hope with the establishment of a **Community Health Care Centre**, designed to serve over **5,000 residents** of Kuladhakni and neighboring villages. The facility focuses on **maternal and child health** while also addressing common but deadly diseases such as **malaria, typhoid, hepatitis, hypertension, and worm infestation**.

Despite this progress, the need remains **urgent and immense**. Our findings reveal an alarmingly high rate of **maternal and child mortality**, largely due to limited access to timely care. In severe cases, residents travel nearly **60 kilometers** to the nearest hospital, and tragically, **some never make it**.

Adding to this hardship, the **lack of potable water** continues to threaten both the health centre's operations and the community's well-being. To ensure safe water for medical use and daily life, we are seeking support to **install a solar-powered borehole system** — a sustainable solution that will provide clean, reliable water for generations to come.

Your support can **save lives, empower families, and transform an entire community**. Together, we can make health and hope a reality for the people of Kuladhakni.

PROGRESS RECORDED

We are delighted to share remarkable progress from the **Kuladhakni Primary Health Care Project** — made possible through the commitment and generosity of our supporters.

In our **Quarter 2 Report**, the **clinic had been successfully roofed** — a major milestone in our journey toward providing accessible healthcare for the 5,000+ residents of Kuladhakni and surrounding communities.

This achievement was made possible through the **philanthropic leadership of our Founder and Executive Director**, whose unwavering personal commitment has driven the project from inception to this stage. We also extend our sincere appreciation to the **VMware Foundation** for their generous contribution of **\$100 USD** toward the project. Their contribution has **boosted our morale, strengthened our budget outlook, and inspired renewed community optimism**.

The people of Kuladhakni express heartfelt gratitude for every show of support. The visible progress — from foundation to roofing — stands as a **testament to the power of partnership and shared purpose**.

Yet, there is still work ahead. Completing the interior of the clinic, equipping the facility, and providing sustainable water access through a **solar-powered borehole** remain critical next steps. With your continued support, we can bring this life-saving facility fully to life.

Together, we are building more than a clinic — we are building hope.

CHALLENGES

A Call for Support: Restoring Hope to Kuladhakni Community Health Care Centre

Tragedy struck recently when a **severe windstorm** tore through **Kuladhakni Community**, devastating the **newly roofed community Health Care Centre**, a project that has been a beacon of hope for over **5,000 rural residents**.

The storm **destroyed the roof and some parts of the building** including that of the community people, leaving the structure exposed to **rain damage and further deterioration**. This unfortunate setback threatens to undo months of collective effort and delay the delivery of essential health services such as maternal care, malaria treatment, and emergency response services that the community desperately depends on.

Despite this challenge, our **commitment remains unshaken**. We are determined to **reroof, restore, and equip** the health centre to ensure that families in Kuladhakni have access to safe and quality healthcare close to home.

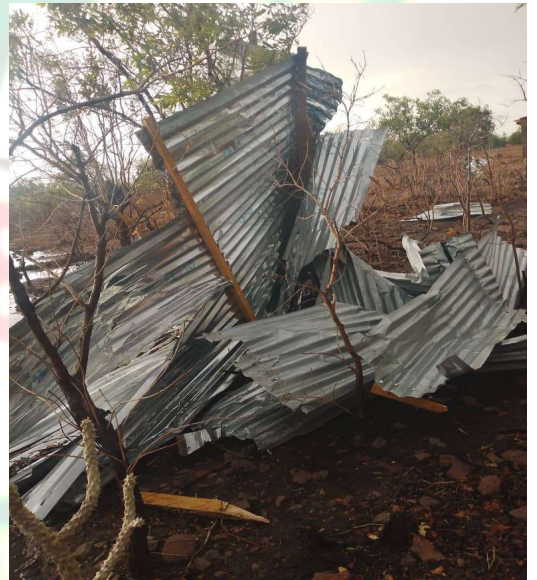
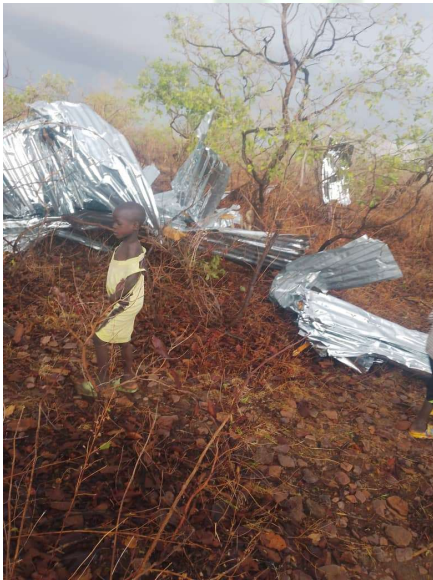
However, **limited funding** has slowed progress. To complete the next phase which includes **re-roofing, equipping the facility, and installing a solar-powered borehole** for clean water, we urgently need **financial support**.

Your contribution today will directly help us:

- Reroof the damaged clinic roof.
- Equip it to serve mothers, children, and families.
- Provide clean water essential for health and hygiene.

With your partnership, we can turn this setback into a **story of resilience and renewal**. Together, we can ensure that the people of Kuladhakni never lose hope in the promise of accessible healthcare.

See the Attached Pictures from the effect of the Windstorm



RISK AND DISASTER MITIGATION STRATEGIES

In view of the current challenges associated with the project, the following risk mitigation strategies are being implemented in collaboration with the community leadership to forestall future occurrences.

- a. **CHANGE OF ROOFING STYLE** – Giving the direction of the wind to the clinic, it has been professionally recommended that, a flat roof style should be adopted in re-roofing the clinic.
- b. **COMMUNITY COLLABORATION** – We are collaborating with the community security groups to help guard against vandalism and theft.
- c. We are also planting 200 windstorm-repellent trees around the clinic structures. This will not only repel windstorms but boost environmental health

RESOURCE MOBILIZATION STRATEGIES

We have implemented some resource mobilization strategies to raise funds for the completion of the projects. These include;

- a. Advocacy visits to philanthropic individuals and like-minded charity organizations
- b. Fundraising appeal letters to potential donors
- c. Partnership with Global Giving for crowdfunding
- d. Partnership with benefitting communities
- e. Flyer's publication for public support
- f. Fundraising Social Media Campaign

RESOURCE NEEDED TO COMPLETE THE PROJECT

Budget Breakdown

1. Repair and roofing: **N 25,000,000(Naira) - \$16,667 (USD)**
2. Furniture and clinical Equipment: **N 20,000,000(Naira) - \$13,334 (USD)**
3. Drugs and water supply **N22,500,000(Naira) – \$14,667 (USD)**
4. Training of mothers (Capacity building on Preparing nutritional meal supplement to support children growth in the community: **N2,000,000(Naira) - \$3,333 (USD)**

Total: N65,000,000 (Naira) - \$43,333(USD)

EXPECTED LONG TERM IMPACT

Over 5,000 people residents in the community will no longer travel long distances to access the basic primary health care services and clean water thereby improving their productivity and wellbeing as an agrarian community. It will also:

1. Improved the health and well-being for 5,000 villagers.
2. Increased access to essential health services.
3. Enhanced emergency preparedness and response in the community.



THANK YOU NOTE FROM THE EXECUTIVE DIRECTOR/FOUNDER

On behalf of the Board of Trustees, Management, Staff and volunteers of MOLDEV, I wish to express our profound appreciation to all those who have contributed so far to this very important project in their own ways.

I want to specially express our gratitude to *VMware Foundation* for their 100 USD donation for the project and the Kuladhakni Community members for offering to provide free labor throughout the project.

I also want to thank Global Giving for providing us collaboration platform to crowdfund towards the completion of this project. The journey so far with you has been encouraging, and we remain optimistic about a fruitful outcome in the coming crowdfunding campaigns.

We will continue to keep you informed on the impact of your contributions and work with you diligently for the successful completion of the project to the satisfaction of all.

Let's rebuild health. Let's restore hope together!!

Thank you.



Comr. Ladi Iliya
Founder/Executive Director