

"Rebuilding Schools after Cyclone in Brazil Relief Fund"

NGO Leader: **APUSA**

Region: Santo Antonio da Patrulha, RS, Brazil

Beneficiareis

EMEI Soneca (Preschool)

EMEF Nossa Senhora de Fatima (Elementary School)

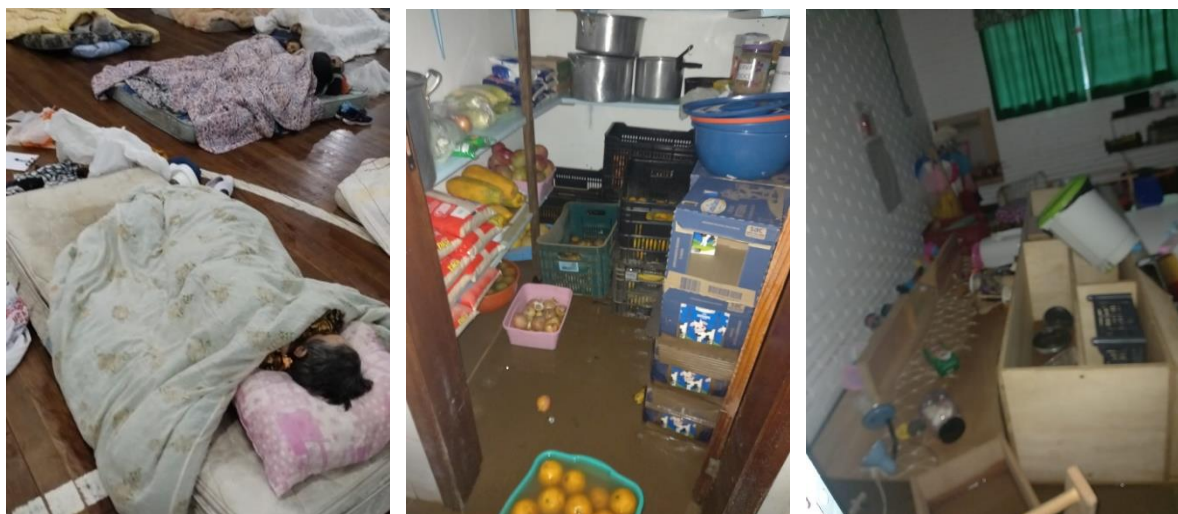
Fund type

- Disaster Recovery
- Education



We are currently facing a critical situation that calls for your support. The Municipal Elementary School Nossa Senhora de Fátima and the Municipal Preschool Soneca, situated in Santo Antônio da Patrulha - Rio Grande do Sul - Brazil, have suffered extensive damage due to a devastating extratropical cyclone that caused severe flooding on June 15th and 16th, 2023. Now, we are reaching out to compassionate individuals like you to help these educational institutions recover and get back on their feet.

Together, these schools cater to approximately 530 children and students, with half of them attending full-time classes. Not only do these schools provide education and learning opportunities, but they also ensure the safety and well-being of their students by offering meals throughout the day. However, the recent disaster has left them in a vulnerable state.



The Soneca Preschool, an inviting single-story building, crafted with sturdy masonry and topped with a fiber cement roof, encompasses a spacious covered area that serves as a bustling dining hall. The entire premises spans an area of 455.61 m². On the other hand, the Nossa Senhora de Fátima Elementary School features a single-story building and an adjacent two-story structure, offering a total area of 1,238.86 m². Within these buildings, you will find well-equipped classrooms, clean and hygienic bathrooms, a dedicated teachers' room, administrative offices, a library filled with knowledge and imagination, a functional kitchen, a computer room fostering digital literacy, and even a sports court spanning an impressive 622.08 m². These buildings are seamlessly connected by a covered walkway, ensuring convenience and protection for students and staff.

Sadly, the recent calamity caused the Passo dos Ramos stream to overflow, submerging these educational institutions completely. The aftermath resulted in the loss of a significant amount of furniture, essential appliances, computer equipment, and crucial hygiene and food supplies. It is heart-wrenching to witness the impact of this disaster on the education and well-being of our students.

Today, we humbly request your generous contribution to help these schools rebuild and reopen their doors. Your support will enable us to **replace damaged furniture, restore essential appliances and computer equipment, replenish hygiene and food supplies, and ensure a safe and nurturing environment for these young minds to flourish once again.**

Together, we can make a profound difference in the lives of these children and provide them with the opportunities they deserve.

Join us in our mission to restore hope and ensure a brighter future for the children of Nossa Senhora de Fátima and Soneca schools. Your compassion and generosity will empower these institutions to **continue their vital work of education, nurturing young minds, and shaping a better tomorrow.** Together, we can transform adversity into triumph and rebuild these schools into beacons of hope.



How will this project solve the problem?

The reconstruction of the school is crucial to provide a safe and suitable environment for the children and students. Donations will be used to repair the damages incurred, rebuild classrooms, rehabilitate facilities, and replace lost equipment and school materials during the disaster. This will enable the resumption of full-time care for the children and students. APUSA (the organization responsible for the project) will commit to using the fund's resources to **purchase educational materials, Chromebooks, equipment, furniture, mats, general repairs, construction materials, and labor to address the damages caused by the cyclone**. This will allow the children to have an appropriate space to learn and develop, ensuring their physical and emotional safety.

Education is a fundamental right for all children and students. By donating to the emergency fund, people will help ensure that these children and students have continuous access to quality education, despite the damages caused by the cyclone. By keeping the schools operational, we guarantee that children and students can continue to have access to quality education. This is crucial for individual and collective development, as education plays a crucial role in empowering people and reducing social inequalities.

In addition to securing this right, the emergency fund will allow for the acquisition of equipment to enhance access to technology and the renovation of the school infrastructure. This will enable the **expansion of full-time education**, benefiting 500 children and students.

The long-term impact of this support is significant. Education is a powerful tool that equips individuals with the knowledge and skills necessary to overcome challenges, pursue their dreams, and contribute to society. By investing in the sustainability of these schools, we are nurturing a generation of empowered individuals who will make a positive impact in their communities and beyond.

Your donation to the emergency fund will have a lasting effect, not only in the immediate aftermath of the cyclone but also in the years to come. Together, we can create a **legacy of educational opportunities**, empowering generations of children and students to reach their full potential and contribute to the reduction of social inequalities.

Thank you for considering this cause and for joining us in making a long-lasting difference.

