



RELIEF- EARTHQUAKE SYRIA & TÜRKIYE

Vision du Monde

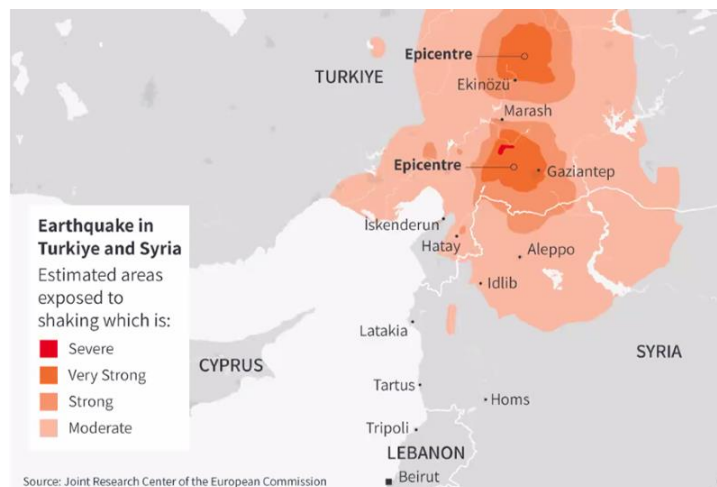
Syria and Türkiye Earthquake Response

World Vision Syria Response
Amman, Jordan and Sanliurfa, Türkiye

Strategic Intent- February 2023

1) Impact

The 7.8-magnitude quake struck just after 4 a.m. on 6 February local time, 23 kilometers (14.2 miles) east of Nurdagi, Gaziantep province, at a depth of 24.1 kilometers (14.9 miles). Nurdagi is located north of the Turkey-Syria border, and the quake was felt in several countries across the region, including Syria and Lebanon. A second quake, which recorded a magnitude of 7.5, struck again just 9 hours later. At least 120 aftershocks have also been recorded since then. At least 45 000 people have died in in both countries.



2) What is World Vision doing?

World Vision declared a CAT III National response on the same day and mobilized its teams and resources to respond rapidly to emerging needs. Immediately after the Earthquake, the World Vision team in Northwest Syria (NWS) started distributing fuel and heaters to collective shelters and emergency ambulances. World Vision has already committed USD 800,000 to partners in NWS and Turkiye (see Annex 1 for a list of commitments to partners). A rapid needs assessment is being conducted with affected children and their families to identify local needs. According to the preliminary information from our staff and partners on the ground, there is an urgent need for fuel for medical facilities and collective emergency shelters for heating purposes and electricity, tents, blankets, mattresses, tarps, heaters, and ready-to-eat meals.

Fuel distribution



3) Response context

The response will occur in Southern Turkiye and NW Syria, where World Vision has had an operational presence or well-established local partners for over seven years. WV has experienced national staff in both affected areas. Each context is very different and poses unique challenges. World Vision Syria Response is committed to programme where we are most needed and where there are gaps in the local response bearing in mind:

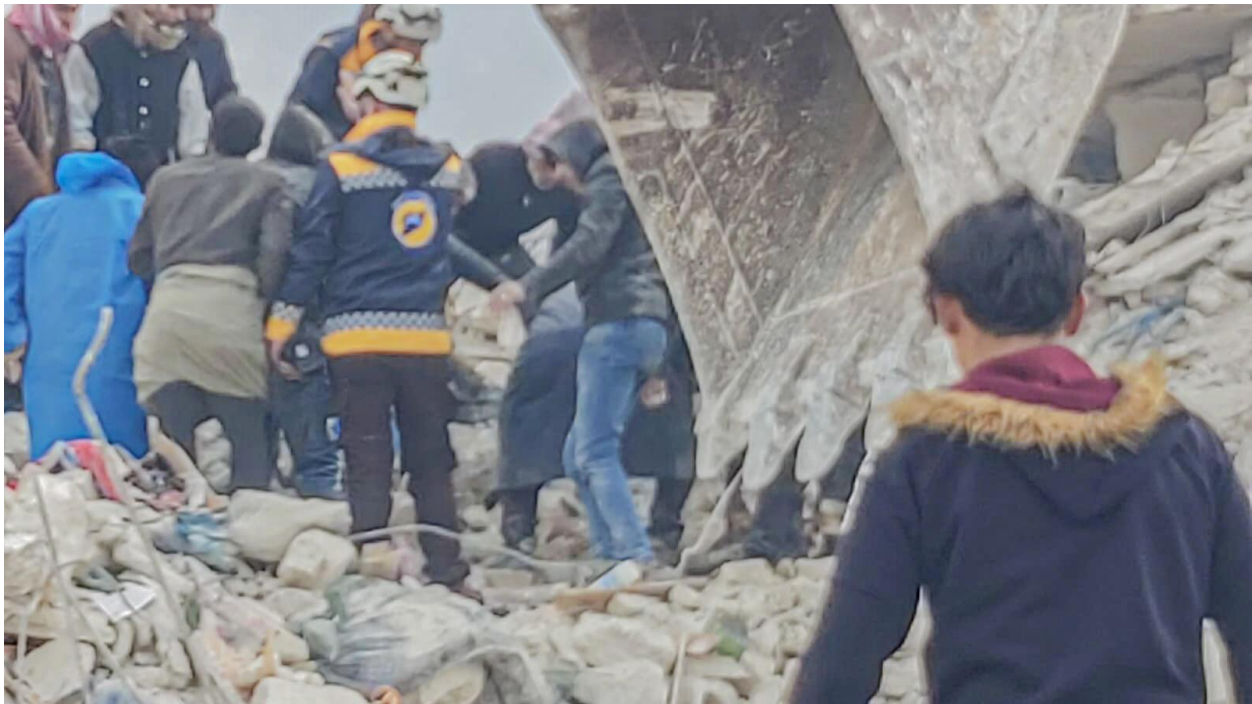
- Southern Turkiye currently looks like it is more badly damaged but has a willing and capable government. It will also be much easier to access for the International Humanitarian community, so we anticipate higher vulnerabilities that need to be mitigated against in NW Syria.
- NW Syria is a complicated and dangerous operating environment that will likely remain difficult for new humanitarian actors to access. We have not allowed non Syrian staff to visit NW Syria for the past few years due to security issues. This will remain the case for the Earthquake response. However, World Vision has well-established procedures, local relationships, and local staff that will enable us to scale up as needed.
- In Southern Turkiye and NW Syria, a significant humanitarian effort was underway to deal with Syrian refugees that were significantly underfunded. This has meant a high absorptive capacity of local NGOs and the humanitarian community for funding.

- Logistics to access NW Syria is currently complicated, with the two main access roads severely affected by earthquake damage and snow. The main UN crossing point is worst impacted, making it difficult to get UN supplies into the impacted area.

4) Phases of response (note some will overlap)

Government Search and Rescue phase (Day 0 to 14) – this is the phase that the sector is currently in and is likely to last for up to a week or more in Türkiye and NW Syria. During this phase, the Government of Türkiye is not allowing large-scale humanitarian operations for locals or INGOs as they would like to focus on search and rescue.

In NW Syria, we have started to respond with local partners, but logistics are becoming a significant constraint. During this time, we will conduct assessments wherever possible to inform the next phase. World Vision does not do search and rescue, leaving this to Governments and specialist agencies.



Immediate Response Phase (7 –90 days) – We will implement with long-term established partners in Syria and Türkiye during this phase. In NW Syria, we will use pre-existing staff to implement directly alongside local partnering. We will carefully monitor the progress of our local partners in Türkiye. Pre-crisis, our Turkish partners had a large amount of capacity. Still, they have large numbers of staff living in the impacted areas who may have been affected significantly by the Earthquake. Logistics and procurement challenges may also impact their capacity. WVSR will closely monitor local partner capacity in this new situation and will scale up funding and support (including deployments from Amman or the broader partnership) as needed to strengthen the local response.

Rehabilitation phase (90days onwards) - During this phase, WV SR will investigate longer-term rehabilitation and livelihoods regeneration needs based on the situation that emerges from assessments, the clusters etc. This is likely to include activities such as support to schools and clinics, repair or reestablishment of services (provision of supplies, equipment etc), livelihoods support for families (through cash [CVP]) or longer-term rehab and rehabilitation of water systems or other critical community infrastructure. Note that this will depend upon many contextual factors in both Turkiye and Syria that cannot be determined as yet.



5) Priority Sectors

WVSR is planning to respond in the affected areas in NWS, targeting 10% of the affected population based on initial discussion and feedback from partners and INGOs. The plan is to respond in priority sectors that build on our in-country track record of years of implementation in WASH, protection, NFI, Cash and Voucher Assistance (CVP), education, & health and nutrition. Given the needs created by the Earthquake, we will also work in Shelter for the short term.

Water, Sanitation, and Hygiene (WASH) and Health

To ensure earthquake-affected children and their families have enhanced access to sufficient, safe drinking water, sanitation, and good hygiene practices, WV and its partners will provide water storage containers, water purification tablets, jerry can's, buckets, sawyer filters, and hygiene kits. WV will repair prioritized water sources and sewage systems at a later stage of the response after the damage is assessed. WV and partners will work on promoting good hygiene practices (contextualized information), focusing on preventing disease outbreaks and further spread, such as cholera or COVID-19.

Shelter and Survival Items

Given the damage's nature, ensuring people have access to shelter and essential household items is a high priority. The Response interventions in this sector will focus on the following: temporary Shelter, distribution of tarpaulins, essential household items, such as beddings, kitchen/dinnerware, warm clothes, heaters, etc.

Health and Nutrition

Based on the preliminary results of the assessments the response will focus on establishment of temporary clinics in the affected areas to enable first aid and basic service provision for those require immediate assistance. Assistance will be offered to people who have suffered trauma because of the Earthquake. A particular emphasis will be placed on addressing the needs of children and adolescents. This will be provided through capable local partners; WV will also enable referrals to functioning hospitals and clinics to provide longer-term health services as needed. To support work of the hospitals, the response will subsidize salaries to enable scale up of services in functioning hospitals and clinics in North West Syria, and support them with additional medical supplies.

Basic first aid kits and Ready to Eat food will be provided to children and families in the affected areas.

Child Protection

Children are likely to be the most impacted people in the affected community, so their physical, psychosocial and protection needs will be addressed through several interventions.

- *Child friendly spaces (CFS):* WV and its partners will establish CFSs to provide children with a place where they can experience a degree of normalcy in an otherwise difficult situation. CFSs will serve as a platform to support psychosocial, protection and educational activities.
- *Case Management services:* WV and its partners will address the protection concerns of clients through a full cycle of six steps from 1) identification, 2) assessment, 3) planning for care and services, 4) implementation of plans, 5) follow up and review and 6) case closure. Each caseworker will be assigned individual cases of children and facilitated all the necessary services/support that the children need based on their protection concern(s).

Cash Based Programming

Cash will be provided through one-time multipurpose cash to families impacted by the earthquake. Cash will be a critical modality of the response as it allows families affected by the quake to access essential resources such as Shelter, heating, clothes, medicines, etc. This approach offers a flexible and empowering solution. It will also help to stimulate the frozen local economy and the small enterprises that were severely impacted. Other forms of multipurpose cash assistance will also be explored; however, selection criteria and the amount will be decided in consultation with the Cash working group and the local authorities.

6) Surge capacity

WV SR already had a mature Humanitarian Operation built up over nearly a decade of responding to the Syria crisis in Jordan, Syria, and Turkiye. We will use this structure to respond, but we will strengthen the Response team with critical deployments as needed. Deployment needs are being identified based on the gaps in the available capacity, anticipated budget growth, and planned programming. The Earthquake response team will be part of the existing Syria Response structure to ensure unity of command and avoid duplication of efforts. A Response Manager will be designated to lead the Earthquake response interventions in both countries. The additional surge will be deployed across most of the support and operational functions, such as comms, finance, procurement/logistics, MEAL and programs, to scale up operations. Initially, all staff will be deployed in Amman; this may change later depending on how the response and needs evolve. At this stage, access to the affected area in Southern Turkiye is severely limited and operations are not permitted to start by the Turkish authorities while they focus on search and rescue. As humanitarian space opens up, we will deploy staff into Turkiye as needed.

Testimonial from Johan Mooij, WV Syria response National Director (Annex 2)

"Humanitarian needs were already extremely severe in Northwest Syria, and this devastating earthquake has added trauma to ongoing crisis there. Health facilities were already badly equipped and unable to cope with need, but now many have been destroyed. Families are trying to survive with no homes, no access to food, in sub-zero temperatures whilst also attempting to deal with the physical and mental impact of this earthquake. We call on the international community to prioritise these people, who have already been through so much."

Dollar handles

	Dollar handle (US\$)	Invitation language/Talking points	Notes for SOs	Date approved
Mass market	\$65	Can provide safe & clean water to one person for 6 months	Water trucking will be provided to 1500 HH (10,500 persons) for six months for a cost of USD 695,000 (including PSC and DPC)	06 Feb 2023
Mass market	\$12.50	Provides one person with access to safe water and sanitation (through repairs of water and sewerage systems)	Repairs to water networks and sewerage systems for USD 619,000 (including PSC and DPC) are estimated to benefit 50,000-75,000 people	
High Net-Worth	\$560	Provides an emergency shelter for a family of seven people for six months	Tents will be provided to 500 families for a total cost of USD 278,000 (including PSC and DPC)	06 Feb 2023
Mass market	\$80	Provides emergency shelter for one person for six months	Tents will be provided to 500 families (3500 individuals) for a total cost of USD 278,000 (including PSC and DPC)	
Mass market	\$40	Provides one person with basic shelter assistance and essential household items during the first weeks after the earthquake	Hybrid kit including emergency shelter, NFI and hygiene items. Kits will be provided to 1500 HHs (10,500 people) for a cost of USD 417,000 (including PSC and DPC)	06 Feb 2023
Mass market	\$40	Supports one person with heating during the initial months following the earthquake	Provision of fuel and heaters for 1500 HHs (10,500 people) for a cost of USD 417,000 (including PSC and DPC)	
Mass market	\$83	Provides a family with a basket of food to support them following the earthquake	Food baskets will be provided to 1500HHs (10,500 people) for a total cost of USD 125,000 (including PSC and DPC)	06 Feb 2023
Mass Market	\$5	Allows a health clinic to provide a consultation for one person	It is estimated that USD 1.376 million (including PSC and DPC) will allow operation of 7 PHCs for 10 months. During this period, the PHCs are expected to provide at least 290,000 patient consultations.	
Mass Market	\$10	Provides medical supplies to enable treatment of four people	This is based on estimated costs of USD 695,000 (including PSC and DPC) to provide pharma items and medical consumables for consultations with 290,000 patients.	
Mass Market	\$40	Gives a child access to a safe, warm play area with recreational equipment for one month.	WVSR plans to provide child-friendly spaces and recreational kits for 1250 children for four months for a total cost of USD 278,000 (including PSC and DPC)	

7) Coordination

World Vision is part of local coordination structures for NW Syria and Southern Turkiye, particularly in Gaziantep and Salinurfa. Staff who have been part of these mechanisms for long-term refugee/ conflict response will be first attendees to these meetings. Over the coming days, we will deploy staff to Southern Turkey and Amman as necessary to bulk up this capability.

8) About World Vision Syria

- For more on WV Syria's track record and capabilities please refer to these documents:
<https://www.wvi.org/publications/emergencies/world-vision-syria-response-country-brief-fy22>
- <https://www.wvi.org/publications/annual-report/emergencies/world-vision-syria-response-annual-report-financial-year>

9) Fundraising Target

World Vision is initially appealing for is **USD 25 million** to implement the above activities and prepare for longer-term projects.



ANNEX- 1

Annex 1 Current commitments to local partners as of 7 February 2023 day 2

1	Action for Humanity	\$100k	North West Syria	Shelter and NFI Procurement
2	Ahlam	\$100k	North West Syria	Supporting Primary Health Care Centers and Consumables
3	Syria Relief and Development	\$100k	North West Syria	Supporting Primary Health Care Centers and Consumables
4	Shafak	\$100k	North West Syria	Supporting Primary Health Care Centers and Consumables
5	AHF	\$100k	North West Syria	Supporting Primary Health Care Centers and Consumables
6	Middle East Council of Churches (MECC)	\$60K	Gos - Aleppo	Shelter and NFI Procurement
7	TAS	\$100k	North West Syria	Shelter and NFI Procurement
8	Hand in Hand	\$100k	North West Syria	Shelter and NFI Procurement
9	Turkish Red Crescent	\$40k	Southern Turkiye	Shelter and NFI Procurement

ANNEX- 2

Johan Mooij, World Vision Syria Response's National Director

"Like many emergency situations that World Vision has responded to in the past, the children in Syria impacted by yesterday's devastating earthquake are now extremely vulnerable. In Syria, they already faced many risks before these devastating earthquakes. Hundreds of thousands are now homeless, and some will have been separated from their families, which further increases their risk of being exploited or facing abuse. In the early stages of a crisis, as emergency actions are undertaken to meet the urgent needs of vulnerable people, safeguarding systems can struggle to develop quickly enough. Unfortunately, there are people who will prey on this vulnerability and will exploit these children at a time when they most need support and protection. As a child focussed organisation, the safety and protection of children is World Vision's main priority and will be central in our response to this emergency".

"In Northern Syria, in particular, the threats to children from abuse were already extreme. The soaring poverty, within a warzone, now devastated by earthquakes, has created an unimaginable number of challenges and suffering for children."

The aid organisation is currently undertaking a rapid assessment in both Syria and Türkiye but has also already begun distributing fuel and heat to shelters, so that families can safely stay there and are protected from sub-zero temperatures and other risks outside.

"Humanitarian needs were already extremely severe in Northwest Syria, and this devastating earthquake has added trauma to ongoing crisis there. Health facilities were already badly equipped and unable to cope with need, but now many have been destroyed. Families are trying to survive with no homes, no access to food, in sub-zero temperatures whilst also attempting to deal with the physical and mental impact of this earthquake. We call on the international community to prioritise these people, who have already been through so much." said Mr Mooij.

World Vision Syria Response is calling for swift and unhindered humanitarian access to the most impacted areas in northwest Syria so that those most affected can be assisted as soon as possible and for all donors and major stakeholders in the Syrian crisis response to urgently mobilize resources to rapidly meet the most pressing humanitarian and health needs in the first stages of the response, as well as aiding reconstruction efforts in the mid to longer term.

"It is essential that the children, who are now even more vulnerable and at risk of exploitation, are able to return to their homes and schools as soon as possible. They are currently struggling to survive in freezing temperatures, exposed to the spread of disease, and to various protection risks -- such as child labour or early child marriage -- and other forms of exploitation and abuse. We must do everything we can to protect them now and in the future. They, like all children in the world, deserve a childhood and a chance of life in all its fullness," said Mr Mooij.