



# THE SHOLLY SERENITY PLACE



**The  
Sholly  
Serenity  
Place.**

# WHO ARE WE?

The Shola Adefolalu Gaska Foundation is a nonprofit organisation set up to bring smiles to the faces of people in need (especially women and children) by providing financial, emotional and spiritual support.

On June 12, 2021, The Foundation opened the doors to its Shelter/Temporary Transition Home: **The Sholly Serenity Place aka Sholly's Safe Home.**

Sholly's Safe Home is a Jesus Christ-Centric Safe Haven and an Oasis of Serenity for vulnerable women and their children. We are located between Chevron and Ajah in Lagos State.

Our mandate is crystal clear to us: Provide temporary accommodation, feeding and plenty of love to every woman over the age of 21 years old that God brings through our doors.



# OUR BACKSTORY

Before we walk you through our ‘Why’ and ‘How’ the Sholly Serenity Place is operated, we thought to briefly share our backstory.

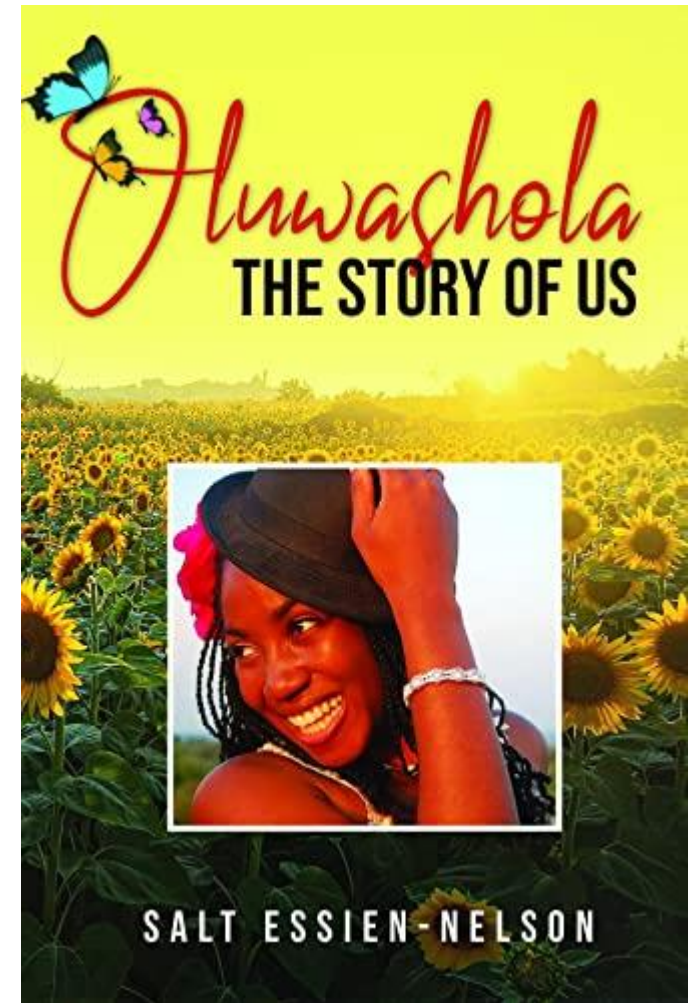
How did the Shola Adefolalu Gaska Foundation aka the Sholly Smile Factory and indeed this Safe Home come about?

Everything we do including this Shelter is in honour of my late sister, Oluwashola Adefolalu Gaska who passed away in Poland in 2016.

Till today, we have no idea what REALLY happened to her but from what we do know, we believe she was a victim of domestic abuse. For more on our backstory, please visit [theshollysmilefactory.org](http://theshollysmilefactory.org).

Losing Sholly (as we used to call her) is the MOST painful thing that has ever happened to me (and I have lost both parents so that is saying a lot) but I bless God for helping me to find a way to bring purpose out of this deep pain.

Thank you, in advance, for any way God will lead you to be a part of what we are doing to keep Sholly's name alive for good, touch lives and glorify God – Salt Essien-Nelson



That's Sholly on the cover of a book also written in her honour

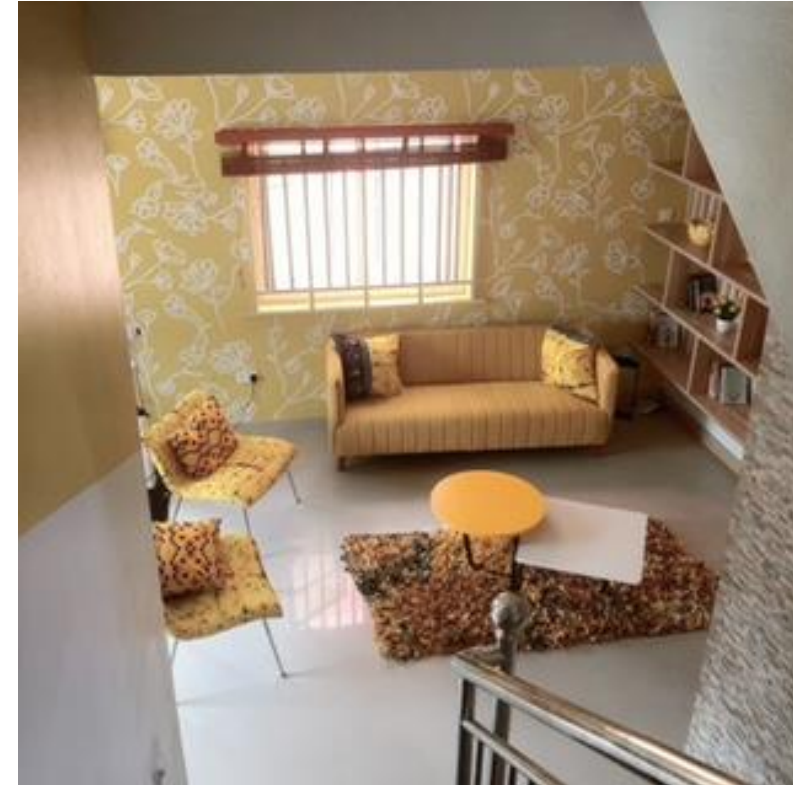
# WHAT'S OUR 'WHY'?

At Sholly's Safe Home, our WHY is to provide safe, temporary accommodation for victims of domestic and/or sexual abuse while they receive counselling and legal advice from the NGO or Church handling their cases.

We believe that knowing that she will have a safe place to lay her head will facilitate a quicker and smoother transition from despair to hope as she works with her Counsellor and/or Lawyer. This will, in turn, hasten her readiness to take the needed next steps towards her future.

Guests referred to us are accommodated, fed and cared for **totally free of cost.**

Our core values are Care, Compassion, Honesty and Respect for People.



# HOW WE OPERATE

Sholly's Safe Home is a 10-bed shelter/transitional home under the umbrella of the Shola Adefolalu Gaska Foundation (The Sholly Smile Factory).

Our Team is made up of:

- 1) Guest Relations Manager, Nkoyo Itegboje
- 2) Finance and Administrative Officer, Milicent Asoegwu
- 3) Facilities Maintenance Executive, Peter Olorunsola Akinnesé
- 3) Two Volunteers: Ifedolapo Oyewole and Chibuzor Ojini

We work with NGOs and Churches that provide counselling services, legal services or medical attention for women in this situation, but are not able to provide accommodation.

We have come to fill in that gap by providing safe shelter for their clients for up to a maximum duration of six weeks.





# HOW CAN YOU PARTNER WITH US?



## Our Needs

1. April 2023 to March 2024 Annual Rent = N3, 000, 000.00
2. June to December 2022 Catering Bill = N1,128,000.00 per month
3. Fairly Used Mini-Van or Car
4. An Air-conditioner for our BQ that we recently had to convert into two additional bed spaces
5. Big OX brand Fans x 3
6. Rechargeable Mini-sized Fans
7. Devotionals for Women & Books on Prayer for our War Room Mini-Library
8. Communion Elements for our War Room
9. Beverages, Tissue, Pampers, Detergent, Female Hygiene Products etc.

# FREQUENTLY ASKED QUESTIONS

## 1. Tell us about The Sholly Serenity Place

The Sholly Serenity Place, also known as Sholly's Safe Home is a Shelter; a Safe Haven and an Oasis of Peace. It seeks to provide temporary accommodation for vulnerable women, victims of domestic or sexual abuse.

## 2. Where are we located?

We are located on the Island in Lagos State.

## 3. When did Sholly's Safe Home begin Operations?

Sholly Safe Home was opened and dedicated in prayer on Monday June 7, 2021. But we began operations officially on June 12, 2021.

## 4. Who runs Sholly's Safe Home?

Sholly's Safe Home is under the umbrella of The Shola Adefolalu Gaska Foundation (The Sholly Smile Factory). Our Team is made up of:

Our Team is made up of:

- 1) Guest Relations Manager, Nkoyo Iteboje
- 2) Finance and Administrative Officer, Milicent Asoegwu
- 3) Facilities Maintenance Executive, Peter Olorunsola Akinneso
- 3) Two Volunteers: Ifedolapo Oyewole and Chibuzor Ojini

## 5. How will Sholly's Safe Home fill its spaces?

We will be working with NGOs/Churches that provide counselling services, legal services or medical attention for women in this situation, but are not able to provide accommodation. They will refer these women in their care to stay with us.

# FREQUENTLY ASKED QUESTIONS

6. How old must Guests be?

The Guests must be at least 21 years old.

7. What is the maximum duration of stay? 6 weeks.

8. What does Sholly Safe Home provide for Guests?

Temporary accommodation, feeding, clothing, toiletries and any other basic needs of a woman.

9. How will we engage our Guests?

We have a weekly schedule of fun, uplifting and inspirational activities lined up for our Guests but they will be totally voluntary. The only activity that we would really encourage them to be a part of would be the Daily Devotionals but in the end, we would leave them to decide.

10. How is the Sholly Safe Home structured?

We have three bedrooms: The Love Guest Room, The Power Guest Room and The Revival Guest Room. We also have a Clarity lounge and our Bright and Sunny kitchen. Our entire space has been designed to lift spirits!

Sholly's Safe Home can accommodate a maximum of ten (10) Guests. Our Breakfast is self-catering (cereals, sandwiches, fruits, tea, coffee etc.) while we will have a Caterer provide Lunch and Dinner for our Guests.

11. Will Sholly Safe Home offer counselling, legal services or medical advice?

No. Our mandate is crystal clear to us: We aim provide our Guests with a safe space to exhale and gather their thoughts such that hope is ignited in their hearts. This way, they are in a good place to take on all the help they are getting from their Counsellors and Lawyers.



# FREQUENTLY ASKED QUESTIONS

## 13. Are visitors allowed in the home?

We will not be allowing our Guests receive visitors. This is for safety and security reasons. If we are to provide a sanctuary where our Guests feel safe, we must keep our location secret. Where a Guest needs to see someone, we will recommend that this takes place off-site during her counselling sessions.

## 14. Are prospective donors allowed to come for inspection?

We have information packages that these donors can go through. But should a Donor insist on an inspection, we will of course be very happy to facilitate same.

## 15. Is Sholly's Safe Home open to women of all faith?

Sholly's Safe Home is a 100% Jesus Christ-Centric place of refuge. The NGOs we work with know this and we believe that they will bear this in mind when referring cases to us.

## 16. What is our desired outcome for Guests?

We want our Guests to feel safe, 'seen' and cared for. We want them to leave us with their hope restored as they are reminded about how much God loves them. In a nutshell, we want them to leave us Serene and ready to face life knowing that, indeed, God's got them covered.

## 17. How do we get funds?

From 2017 to mid-2019, we mainly ran on personal funds but from 2020, we began to get donations from friends and family. We hope these donations keep coming in from people who believe in what we are doing. We appreciate every single kobo! For us, no amount is too small. We are also seeking to apply for grants from reputable organisations in and outside Nigeria.

## 18. If I wish to make a donation, how can I contact you? Please send us an email via [theshollysmilefactory@gmail.com](mailto:theshollysmilefactory@gmail.com)

# FREQUENTLY ASKED QUESTIONS

19. Have we registered officially with a relevant ministry?

Yes, we have introduced ourselves to the Domestic and Sexual Violence Response Team (DVSRT) and are registered with the Ministry of Women Affairs and Poverty Alleviation in Lagos State.

20. Who are the Trustees of the Shola Adefolalu Gaska Foundation?

- Abimbola (Salt) Essien-Nelson
- Henry Essien-Nelson
- Olufunmilola Adedipe Adeboye
- Ize Adava
- Okaima Ohizua
- Yemisi Sawyer
- Funkeyi Akintayo

If you are still reading, it shows you are keen to know about us and for that, we are grateful.

Is there a question on your mind that we have not answered? Please let us know via [theshollysmilefactory@gmail.com](mailto:theshollysmilefactory@gmail.com).

You can also call 0810 795 7992

We do look forward to hearing from you!

God bless you!

Salt (Abimbola) Essien-Nelson

Chief Errand Girl, The Sholly Smile Factory.

# PHOTO GALLERY — LIVING AND DINING AREAS



# PHOTO GALLERY — KITCHEN AREA





# PHOTO GALLERY — GUEST ROOMS





Account: The Shola Adefolalu Gaska Foundation  
First Bank 203 389 6366  
Ref: YourName4TSSP