



The Adopt-A-Healthcare-Facility Programme Prospectus Document

A PSHAN Initiative



www.pshan.org

Opening the doors to better
healthcare across Nigeria



Welcome

PSHAN seeks to strengthen Nigerian health systems and improve healthcare access for all Nigerians by providing quality, affordable healthcare with the Adopt-A-Healthcare-Facility Programme.

The Adopt-A-Healthcare-Facility Programme (ADHFP) was launched with the aim to establish a primary healthcare facility (PHC) in each of Nigeria's 774 local government areas (LGAs) to provide low-cost health services to the poor and vulnerable at reasonable standards.

We invite you to join us in this life-changing programme and help us change Nigeria's healthcare system from the ground up. We appreciate the opportunity to share our plans for this flagship project and invite any comments, questions, or suggestions.



TABLE OF CONTENTS

1 **BOARD OF DIRECTORS**

3 **ABOUT PSHAN**

4 **CONTEXT**

5 **THE OPPORTUNITY**

7 **IMPACT**

13 **ADOPT**

25 **CREDIBILITY**

27 **LEADERSHIP TEAM**

29 **JOIN US**

PSHAN's Board of Directors

PSHAN's Board of Directors offers unrivalled insights into the health and business sectors due to their exceptional experience and unmatched excellence in their areas of expertise.

Our board members are at the forefront of providing strategic direction in the healthcare sector across their respective areas of knowledge and are also instrumental in decision-making, fundraising, and governance.

Ahaji Aliko Dangote (GCON)

CHAIRMAN DANGOTE GROUP



Aliko Dangote is the Founder and President/Chief Executive of the Dangote Group, the largest conglomerate in West Africa. A committed philanthropist, Dangote made an initial endowment to the Dangote Foundation in March 2014, enabling it to expand its work in health, education and economic empowerment. He sits on the board of the Corporate Council on Africa and is a member of the Steering Committee of the United Nations Secretary-General's Global Education First Initiative. He also collaborates with the Bill and Melinda Gates Foundation to fight polio and is on the board of ONE; the anti-poverty group co-founded by Bono.

Mr. Jim Ovia (CON)

CHAIRMAN ZENITH BANK



Forbes Africa called him the "Godfather of Nigerian banking," and for good reason: since founding Zenith Bank, which began with \$4 million in shareholder funds, he has transformed Zenith into a financial services conglomerate with more than \$16 billion in assets. Today, he is a well-known philanthropist and his foundation awards educational scholarships to the less privileged.

Dr. Muhammad Ali Pate

GLOBAL DIRECTOR WORLD BANK



Dr. Muhammad Ali Pate is the Global Director, Health, Nutrition and Population Global Practice of the World Bank and the GFF (Global Financing Facility for Women, Children and Adolescents) based in Washington DC. He has a wealth of experience in public health systems – from leading Nigeria's Ministry of Health to guiding non-governmental organisations to improve public health in low- and middle-income countries. Dr. Pate is an MD trained in both Internal Medicine and Infectious Diseases, with an MBA from Duke University. Prior to this, he studied at the University College London. He also has a Master's in Health System Management from the London School of Hygiene & Tropical Medicine, UK.

Mr. Aigboje Aig-Imoukhuede (FCIB, CON)

CHAIRMAN CORONATION CAPITAL



Aigboje Aig-Imoukhuede is a lawyer, banker, entrepreneur and philanthropist. He is the Founder and Chairman of Coronation Capital. Previously, he was Group Managing Director and Chief Executive Officer of Access Bank Plc, where he led the bank's transformation into one of Africa's leading banks. In 2012, he was appointed Chair of the Presidential Committee on the Verification of Fuel Subsidies. His supervision of the process is widely recognised for saving Internal Medicine and Infectious Diseases, with an MBA from Duke University. Prior to this, he studied at the University College London. He also has a Master's in Health System Management from the London School of Hygiene & Tropical Medicine, UK.



Ms. Zouera Youssoufou

CEO ALIKO DANGOTE FOUNDATION

Zouera Youssoufou is the CEO of the Aliko Dangote Foundation, the largest private foundation in sub-Saharan Africa. She previously worked with the European Union on private sector development in Niger and was a management consultant with Deloitte in Ghana. She is passionate about children, disaster relief and humanitarian aid, health and poverty alleviation.



Dr. Titilayo Fowokan (FCTI, ACIS)

GROUP HEAD DANGOTE INDUSTRIES

Dr. Fowokan is Group Head, Strategic Tax and Compliance, Dangote Industries Limited and oversees the tax affairs of Dangote companies across the Group. She is a fellow of the Institute of Chartered Accountants of Nigeria (ICAN), the Chartered Institute of Taxation of Nigeria (CITN) and the Association of Forensic Accounting Researchers (AFAR).



Mrs. Omobolanle Victor-Laniyan

HEAD OF SUSTAINABILITY ACCESS BANK

Omobolanle Victor-Laniyan is the Head of Sustainability at Access Bank and has worked in sustainability and communication for almost two decades. She monitors emerging trends, programmes, and issues and educates others about sustainability. She mentors sustainability champions in other African financial institutions providing them with the support they need to implement positive change in their institutions.

Our Partners

BILL & MELINDA
GATES foundation



A Compelling Opportunity to Join Forces for the Greater Good

The Private Sector Health Alliance of Nigeria (PSHAN) creates a compelling opportunity to pool private sector capabilities, resources, assets and expertise across a collaborative platform to complement the efforts of government, partners and implementers to accelerate improvement in health outcomes in Nigeria.

The underlying philosophy behind the Alliance is a collective responsibility and synergistic impact.

PSHAN seeks to improve healthcare for all Nigerians by providing quality, affordable healthcare using ADHFP as a key initiative.

PSHAN's Vision

A Nigeria where everyone has equitable access to quality and affordable healthcare and wellness.

PSHAN's Mission

To be the go-to business-led platform that mobilises resources and capabilities and leverages the same to improve Nigeria's healthcare system.

Nigerian Health Background

Growing inequality, poverty, and the emergence of complex disease patterns and financial pressures have highlighted the critical importance of a resilient health system in Nigeria. The poor performance of the health sector is reflected primarily in the country's health statistics.



Sources: NIH, NLM (2017), IOSR Journal of Economics and Finance, UNICEF (2018)
PharmAccess Foundation (2019)

Strengthening primary health centres is key to improving Nigeria's health indicators, which are currently among the worst in Africa and the rest of the world.



ADHFP

ADHFP was conceptualised by Mr. Aigboje Aig-Imoukhuede and PSHAN with the primary goal of establishing at least one global standard primary healthcare centre in each of the 774 local government areas in Nigeria.

ADHFP was established on our belief that the African continent will continue to bear the painful burden of high disease mortality long after the rest of the world has overcome these challenges unless we address the poor state of health systems at the primary level.

ADHFP is based on three main pillars:



01

Health improvement

An overall improvement in the health of the population.



02

Equitable access

Ensuring that all citizens have access to the same quality of primary healthcare services.

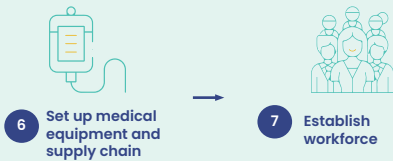


03

Quality assurance

Adhering to only the highest applicable clinical standards.

How ADHFP Works



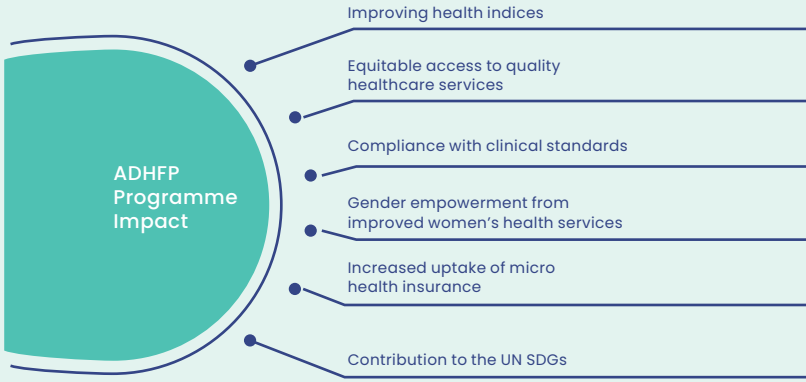
Infrastructure Models

Greenfield Model

All associated infrastructure is new and built from scratch to acceptable standards. This includes land acquisition, construction, staff recruitment, training and more.

Brownfield Model

An existing healthcare facility is acquired and upgraded (if required) to meet ADHFP standards. PHCs can either be publicly-owned (government) or privately-owned facilities.



Objective

774

To deliver one global standard primary healthcare centre in each of Nigeria's 774 LGAs

A High-Impact Collaboration

Improving health indices

Nigeria has some of the worst health indices in the world, both in maternal and infant mortality. We have infectious diseases and non-communicable diseases, and a population that is growing rapidly, with a lot of young people (around 50% of the population) concentrated on the lower ends of the demographics. Primary healthcare in Nigeria has significant room for improvement. The problems we have noted are both on the demand and supply side. On the demand side, there is virtually no access to healthcare in many sectors - with rural areas hardest hit.

By establishing one primary healthcare centre in each of the 774 Local Government Areas, those who previously did not have access to primary healthcare,

Equitable access to quality healthcare services

Currently, only about 20% of the 30,000 primary healthcare facilities across Nigeria are fully functional. By adhering to stringent and consistent standards, ADHFP will significantly improve access to healthcare facilities that are well-staffed and well-stocked. ADHFP will ensure that all patients have access to staffed and well-stocked. ADHFP will ensure that all patients have access to quality healthcare - regardless of their location.

Compliance with clinical standards

Only one in four healthcare facilities are able to achieve up to 25% compliance with minimum requirements. The strict protocol for the construction and renovation of ADHFP's healthcare facilities will ensure that clinical standards are met and adhered to in a sustainable way.



Sources: GuardianNG (2021), PubMed.gov (2014)

Gender empowerment from improved women's health services

Studies show that empowered women are more likely to use modern contraception, deliver in a health facility and have a skilled attendant at birth. This is only achievable if women have convenient and affordable access to these services.

Increased uptake of micro health insurance

The ability to pay for medical costs is a massive problem in Nigeria. Approximately 70 - 80% of Nigerians have to pay out of pocket for health services. If someone has to pay for healthcare, they are often forced to choose between eating, transporting themselves, feeding their children or going to the hospital.

ADHFP believes to solve this problem, a multi-sectoral approach is needed where Health Maintenance Organisations (HMOs) and micro health insurance schemes must function together to be able to pull the resources so that Nigerians can access healthcare without having to consider what is in their pocket. For healthcare to work in Nigeria, each of those sectors – health insurance, healthcare financing, healthcare provision, standards, monitoring and evaluation, must all work together.



Contribution to the United Nation's Sustainable Development Goals

By establishing primary health centres across Nigeria, we aim to ensure health and well-being for all people, in line with the UN's Sustainable Development Goals. The SDGs were adopted by the United Nations in 2015 as a global call to action to end poverty, protect the planet and ensure that all people enjoy peace and prosperity, by 2030.

ADHFP is targeting seven of the UN's Sustainable Development Goals and the impact will be immediate.

Primary UN SDGs targeted by ADHFP



Secondary UN SDGs targeted by ADHFP





Beyond Medical Care

ADHFP is not just about providing medical care but looks at the entire value chain. By establishing primary healthcare centres for those who need it most, the project will make an immediate impact on the mortality rate in Nigeria.

ADHFP will impact the entire value chain and will provide:

SECURITY

EQUIPMENT

POTABLE WATER & ELECTRICITY

MEDICAL FURNITURE AND FURNISHINGS

BUILDING & CONSTRUCTION

MEDICATION

STAFF

QUALITY CONTROL

STAFF TRAINING

AN END-TO-END VALUE CHAIN

Common Capital Expenditure

Infrastructure

- Building
- Fencing
- Landscaping
- Furniture
- Power supply system
- Water supply system
- Sewage system

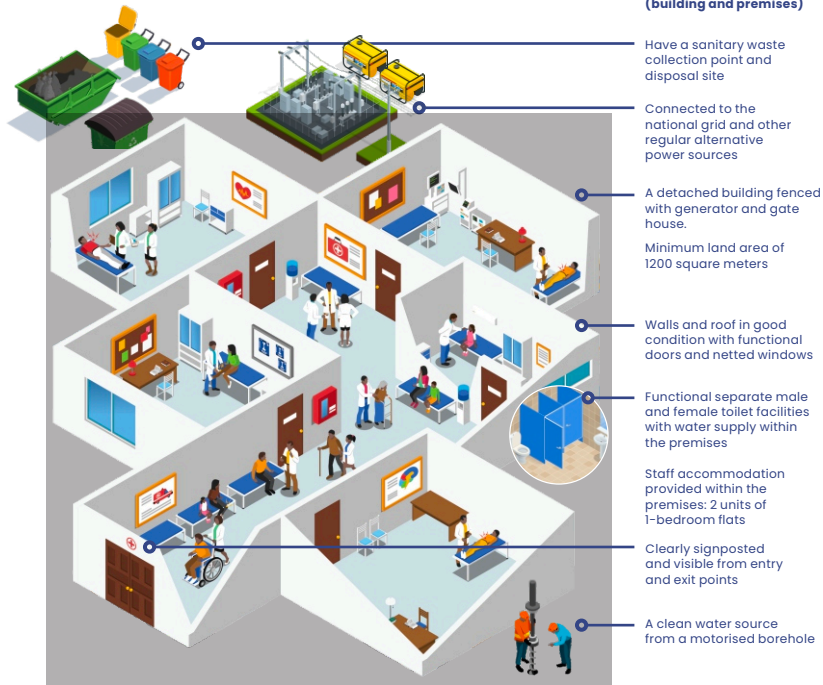
Common Operational Expenditure

- Personal compensation
- Training costs
- Medication
- Laboratory tools

Alternate Power Source

- Generator
- Solar panels

ADHFP Minimum Standards



Minimum infrastructure (building and premises)

Have a sanitary waste collection point and disposal site

Connected to the national grid and other regular alternative power sources

A detached building fenced with generator and gate house.

Minimum land area of 1200 square meters

Walls and roof in good condition with functional doors and netted windows

Functional separate male and female toilet facilities with water supply within the premises

Staff accommodation provided within the premises: 2 units of 1-bedroom flats

Clearly signposted and visible from entry and exit points

A clean water source from a motorised borehole

The building should have sufficient rooms and space to accommodate:

- Reception areas for child welfare, ANC, health education and ORT corner
- Staff station
- Consulting rooms
- Adolescent health service room
- Pharmacy & dispensing unit
- Delivery rooms
- Maternity/lying-in section
- In-patient ward section
- Laboratory
- Medical records area
- Injection/dressing area
- Minor procedures room
- Food demonstration area
- Kitchen
- Store
- Male and female toilets

Personnel requirements

- 1 Medical officer
- 1 CHO (Chief Health Officer)
- 4 Nurses / Midwives
- 3 CHEW (Community Health Worker)
- 1 Pharmacy technician
- 6 JCHEW (Junior Community Health Extension Worker)
- 1 Environment officer
- 1 Medical records officer
- 1 Laboratory technician
- 2 Health assistants
- 2 Security personnel
- 1 General maintenance staff

PHC Minimum Standards Per Type

Scale	Rural PHC
Settlement	Health Post Neighborhood or village level
Estimate Population Coverage	500
Rendered representation	
Minimum Infrastructure	
Signage	Visible, clear entry and exit points
Colour	Cream
Minimum land area	1,200 square metres
Wards	2 rooms with cross ventilation
Building condition	Walls and roof must be in good condition with functional doors and netted windows
Sanitary system	Separate male & female toilet facilities
Water supply	Yes
Water source	Motorised borehole
Power source	National grid or alternative
Solid waste	Sewage collection/treatment
Waste disposal	Collection point for disposal from site
Signage	Visible from both entry & exit points
Staff residence/accommodation	1 bedroom self-contained apartment
Accessory structures	Gate and generator houses
Boundary	Perimeter fencing
Building space requirements	

Source: National Primary Health Care Development Agency (NPHCDA);
Minimum Standards for Primary Health Care in Nigeria

Suburban PHC

Primary Healthcare Clinic
Settlements, Neighbourhood, Villages or
Communities

2,000 - 5,000



Visible, clear entry and exit points

Blue

2,475 square metres

A detached building with at least 5 rooms

Walls and roof must be in good condition with
functional doors and netted windows

Separate male & female toilet facilities

Yes

Motorised borehole

National grid or alternative

Sewage collection/treatment

Collection point for disposal from site

Visible from both entry & exit points

2 bedroom apartments

Gate and generator houses

Perimeter fencing

Client observation area, Consulting area, Delivery room, First stage room, Injection
and dressing area, Lying-in ward (4 bed), Pharmacy section, Record section, Staff
station, Store, Toilet facilities (or VIP Toilet), Waiting/reception area

Urban PHC

Primary Healthcare Clinic
Political Ward

10,000 - 20,000



Visible, clear entry and exit points

Green

4,200 square metres

A detached building with at least 13 rooms

Walls and roof must be in good condition with
functional doors and netted windows

Separate male & female toilet facilities

Yes

Motorised borehole

National grid or alternative

Sewage collection/treatment

Collection point for disposal from site

Visible from both entry & exit points

2 units of 1 bedroom semidetached apartments

Gate and generator houses

Perimeter fencing

Waiting/Reception areas for Child Welfare, ANC, Health Education and ORT corner, Staff station, 2
consulting rooms, Adolescent health service room, Pharmacy & dispensing unit, 2 delivery rooms,
Maternity/lying-in section, In-patient ward section, Laboratory, Medical records area, Injection/Dressing
area, Minor procedures room, Food demonstration y rooms, area, Kitchen, Store

Adopters Overview

With your support, we can move the ADHFP forward and make a long-term impact.

As an adopter, you will be at the forefront of providing strategic input in the healthcare sector across your respective area of interest, valuable in policy formulation and decision making.





What Your Adoption Subscriptions Are Used For

Your adoption subscriptions are used to implement the ADHFP – flagship programme, which is rooted in providing 1 Primary Healthcare Centre in each of Nigeria’s 774 Local Government Areas – so that all Nigerians can have equitable access to quality and affordable healthcare while also contributing to improved health indices, job creation, a more reliable healthcare value chain, and health policy reforms.

Note: Your adoption subscriptions are not used to fund the operating expenses of PSHAN – this is provided annually by our founding members.

What Being an Adopter Will Do For You

In addition to the impact of the project itself, there is an array of other benefits offered.

1. Boost Your Brand Awareness and Overall Brand Equity

Being an adopter of the ADHFP positively impacts your brand image and enhances your competitive edge. Being an adopter will strengthen your brand's reputation and help you attract and retain your desired partners, customers, and employees. It will help you develop a long-term track record of social impact in Nigeria and directly boost the sales and profits from your products and services. In addition, you will position yourself as a credible organization committed to socio-economic growth in the country.

2. Enjoy Tax-Deductible Donations

PSHAN is listed on the 5th Schedule to the Companies Income Tax Act of the FIRS, allowing your company to write off charitable donations and sponsorship of the ADHFP. As an adopter in the ADHFP, you will enjoy a write-off of up to 10 percent of your taxable profits for financial and sponsorship of the ADHFP. As an adopter in the ADHFP, you will contribute to the ADHFP.

Subject to Provisions of The Companies Income Tax Act of The Federal Republic of Nigeria.

3. Be the Voice of The Organized Private Sector and Directly Influence Policies & Initiatives in The Health Care Sector.

As an adopter of the ADHFP, you will be an active part of the collective voice of the organized private sector and be able to advocate directly to the government on healthcare matters in Nigeria. This will help adopters with better insights regarding investment in healthcare and support governance to ensure considerable progress is made within the sector.

4. Inform, Educate, Design, And Deliver Public-Private Partnerships (PPPs) In Health Care

Your adoption subscription will also be utilized to foster mass adoption of optimal approaches to healthcare PPPs by private and public sector leaders - this will result in significant changes in the execution of PPPs in healthcare and the effectiveness of healthcare philanthropy in Nigeria. PSHAN shall, with your subscription, develop working tools, guides, and workshops that educate sector stakeholders on approaches to designing and managing bankable and sustainable PPPs in the sector.

PSHAN will also work with the different tiers of Government to develop policy guidelines for adoption in this space to enhance the conduciveness of the policy framework within which PPPs are delivered in various jurisdictions in the country.

5. Work Toward a More Equitable Nigeria.

The main goal of the ADHFP is to establish at least one global standard Primary Health Centre (PHC) in each of the 774 local government areas in the country. This goal will be achieved through collaborative efforts and funding from corporations, philanthropists, and investors like you to fund the rehabilitation of PHCs across Nigeria. PSHAN saw an through existing centres or centres built from scratch to alleviate problems stemming from unequal access to affordable quality healthcare. With your adoption, you will adopt a PHC for the PHC rehabilitation.

Join our network of influential leaders shaping the country's health status and objectives towards improving healthcare outcomes in Nigeria. We invite you to join our alliance - an elite group of stakeholders committed to accelerating Nigeria's progress in achieving its health-related Sustainable Development Goals.

6. Access to market insights and reports

Reliable, timely, and up-to-date information on various aspects of primary healthcare, including human resources, essential medicines, and disease burden would be provided to adopters, as well as updates and regular progress essential medicines, and disease burden would be provided to adopters, as well as updates and regular progress reports on the impact of contributions to PHCs and community members on achieving the global service standard. Adopters will have access to an interactive platform that guides them to quality information and communication about primary healthcare in Nigeria.

7. Streamlined connections and collective power

Adopters are positioned in connection with government, commodity suppliers and other key stakeholders in the primary healthcare value chain to streamline philanthropic activities. The ADHFP is a platform for collaboration, communication, and healthcare value chain to streamline philanthropic activities. The ADHFP is a platform for collaboration, communication, and effective change between multiple interested parties. Funds and resources are pooled through collaborations and leveraging the public-private sector dynamic, from willing sources and partnerships to facilitate the renewal of primary healthcare in Nigeria.



Adopter Opportunities

Become part of our impressive network of supporters. Pledge your support today and contribute to the improvement of Nigeria.

PHSHAN will connect its adopters and support their relationships with each other and with the PHC communities and programmes they invest in. We hope to accomplish this by working with at least 110 potential adopters - corporate organisations, private foundations, international donor agencies, trusts, and individual philanthropists - in the first five years.

Adopter opportunity overview

Category	PHCs to be adopted	Greenfield Subscription Fee (₦)	Brownfield Subscription Fee (₦)	Tenure (years)
Rural	5	941m	864m	5
Rural	10	1.88bn	1.73bn	5
Suburban	5	1.8bn	1.59bn	5
Suburban	10	3.6bn	3.18bn	5
Urban	5	3.7bn	3.3bn	5
Urban	10	7.41bn	6.62bn	5



Rural – 5 PHCs

PHCs to be adopted	Greenfield Subscription Fee (₦)	Brownfield Subscription Fee (₦)	Tenure (years)
5	941m	864m	5

BENEFITS

- Actively managed investments with the potential to generate significant long-term tax-efficient benefits.
- Opportunity to be elected to the PSHAN Membership Advisory Council.
- Opportunity to participate in select PSHAN working groups.
- VIP opportunity to present or provide feedback at ADHFP workshops that bring together adopters and partners to look at PHCs in development as a basis to discuss how to design frameworks and policies suited to the project.
- Invitation to PSHAN's annual gala (including side events and official dinner) with VIP access to event tickets and the opportunity to invite up to 12 guests to each event.
- Opportunity to lead economic and social development which strengthens benefiting communities.
- Opportunity to generate shared value development resulting in improved competitive advantage for business and increased visibility for products and services in the PHC community.
- Invitation to special events, including members-only sessions and networking spaces.
- ADHFP logo and seal issued for use on Adopter's website and other online assets.
- Opportunity to contribute content to meetings and propose sessions/topics.
- Opportunity to announce events/news and share information in the PSHAN newsletter.
- A platform to voice support for the Nigerian healthcare system development with a current focus on making ADHFP a success.



Rural – 10 PHCs

PHCs to be adopted	Greenfield Subscription Fee (₹)	Brownfield Subscription Fee (₹)	Tenure (years)	Once-off payment
10	1.88bn	1.73bn	5	Yes

BENEFITS

- An opportunity to redeem accrued interest on investment principal (applies to once-off subscription payments for the adoption of 10 PHCs or more).
- Actively managed investments with the potential to generate significant long-term tax-efficient benefits for adopters.
- Opportunity to display corporate branding within and around adopted PHCs – thereby significantly boosting adopters' corporate reputation.
- Opportunity to be elected to the PSHAN Membership Advisory Council.
- VIP opportunity to leverage PSHAN's strategic media partners for high profile visibility and branding activities with the most respected international media channels.
- VIP opportunity to tailor adoption to match adopters' philanthropic interests.
- Opportunity to participate in select PSHAN working groups.
- VIP opportunity to present or provide feedback at ADHFP workshops that bring together adopters and partners to look at PHCs in development as a basis to discuss how to design frameworks suited to the project.
- Invitation to PSHAN's annual gala (including side events and official dinner) with VIP access to event tickets and the opportunity to invite up to 20 guests to each event.
- Opportunity to lead economic and social development which strengthens benefiting communities
- Opportunity to generate shared value development resulting in improved competitive advantage for business and increased visibility for products and services in the PHC community.
- ADHFP logo and seal issued for use on Adopter's website and other online assets.
- Full access to the ADHFP platform and adopter benefits.

Suburban - 5 PHCs

PHCs to be adopted	Greenfield Subscription Fee (₹)	Brownfield Subscription Fee (₹)	Tenure (years)
5	1.8bn	1.59bn	5

BENEFITS

- An opportunity to redeem accrued interest on investment principal (applies to once-off subscription payments for the adoption of 10 PHCs or more).
- Actively managed investments with the potential to generate significant long-term tax-efficient benefits for adopters.
- Opportunity to display corporate branding within and around adopted PHCs – thereby significantly boosting adopters' corporate reputation.
- Opportunity to be elected to the PSHAN Membership Advisory Council.
- VIP opportunity to leverage PSHAN's strategic media partners for high profile visibility and branding activities with the most respected international media channels.
- VIP opportunity to tailor adoption to match adopters' philanthropic interests.
- Opportunity to participate in select PSHAN working groups.
- VIP opportunity to present or provide feedback at ADHFP workshops that bring together adopters and partners to look at PHCs in development as a basis to discuss how to design frameworks suited to the project.
- Invitation to PSHAN's annual gala (including side events and official dinner) with VIP access to event tickets and the opportunity to invite up to 20 guests to each event.
- Opportunity to lead economic and social development which strengthens benefiting communities
- Opportunity to generate shared value development resulting in improved competitive advantage for business and increased visibility for products and services in the PHC community.
- ADHFP logo and seal issued for use on Adopter's website and other online assets.
- Full access to the ADHFP platform and adopter benefits.

Suburban – 10 PHCs

PHCs to be adopted	Greenfield Subscription Fee (₦)	Brownfield Subscription Fee (₦)	Tenure (years)	Once-off payment	Yearly instalment payments per adopter
10	3.6bn	3.18bn	5	Yes	Optional

BENEFITS

- Actively managed investments with the potential to generate significant long-term tax-efficient benefits for adopters.
- Opportunity to be elected to the PSHAN Membership Advisory Council.
- VIP opportunity to leverage PSHAN's strategic media partners for high profile visibility and branding activities with the most respected international media channels.
- Opportunity to display corporate branding within and around adopted PHCs – thereby significantly boosting adopters' corporate reputation.
- VIP opportunity to leverage PSHAN's strategic media partners for high profile visibility and branding activities with the most respected international media channels.
- VIP opportunity to tailor adoption to match adopters' philanthropic interests.
- Opportunity to participate in select PSHAN working groups.
- VIP opportunity to present or provide feedback at ADHFP workshops that bring together adopters and partners to look at PHCs in development as a basis to discuss how to design frameworks suited to the project.
- Invitation to PSHAN's annual gala (including side events and official dinner) with VIP access to event tickets and opportunity to invite 20 guests to each event.
- Opportunity to lead economic and social development which strengthens benefiting communities.
- Opportunity to generate shared value development resulting in improved competitive advantage for business and increased visibility for products and services in the PHC community.
- ADHFP logo and seal issued for use on Adopter's website and other online assets.
- Offers adopters an opportunity to redeem accrued interest on investment principal (applies to once-off subscription payments for the adoption of 10 PHCs or more).
- Access to High-level connections with other adopters.
- Be an integral part of PSHAN's overall mission to accelerate improvements in health outcomes in Nigeria.

Urban – 5 PHCs

PHCs to be adopted	Greenfield Subscription Fee (₦)	Brownfield Subscription Fee (₦)	Tenure (years)
5	3.7bn	3.3bn	5

BENEFITS

- Actively managed investments with the potential to generate significant long-term tax-efficient benefits for adopters.
- Opportunity to be elected to the PSHAN Membership Advisory Council.
- VIP opportunity to leverage PSHAN’s strategic media partners for high profile visibility and branding activities with the most respected international media channels.
- Opportunity to display corporate branding within and around adopted PHCs – thereby significantly boosting adopters’ corporate reputation.
- VIP opportunity to leverage PSHAN’s strategic media partners for high profile visibility and branding activities with the most respected international media channels.
- VIP opportunity to tailor adoption to match adopters’ philanthropic interests.
- Opportunity to participate in select PSHAN working groups.
- VIP opportunity to present or provide feedback at ADHFP workshops that bring together adopters and partners to look at PHCs in development as a basis to discuss how to design frameworks suited to the project.
- Invitation to PSHAN’s annual gala (including side events and official dinner) with VIP access to event tickets and opportunity to invite 20 guests to each event.
- Opportunity to lead economic and social development which strengthens benefiting communities.
- Opportunity to generate shared value development resulting in improved competitive advantage for business and increased visibility for products and services in the PHC community.
- ADHFP logo and seal issued for use on Adopter’s website and other online assets.
- Offers adopters an opportunity to redeem accrued interest on investment principal (applies to once-off subscription payments for the adoption of 10 PHCs or more).
- Access to High-level connections with other adopters.
- Be an integral part of PSHAN’s overall mission to accelerate improvements in health outcomes in Nigeria.

Urban – 10 PHCs

PHCs to be adopted	Greenfield Subscription Fee (₹)	Brownfield Subscription Fee (₹)	Tenure (years)	Once-off payment	Yearly instalment payments per adopter
10	7.41bn	6.62bn	5	Yes	Optional

BENEFITS

- An opportunity to redeem accrued interest on investment principal (applies to one-off subscription payments for the adoption of 10 PHCs or more).
- Actively managed investments with the potential to generate significant long-term tax-efficient benefits for adopters.
- Opportunity to display corporate branding within and around adopted PHCs – thereby significantly boosting adopters’ corporate reputation.
- Opportunity to be elected to the PSHAN Membership Advisory Council.
- VIP opportunity to leverage PSHAN’s strategic media partners for high-profile visibility and branding activities with the most respected international media channels.
- VIP opportunity to tailor adoption to match adopters’ philanthropic interests.
- Opportunity to participate in select PSHAN working groups.
- VIP opportunity to present or provide feedback at ADHFP workshops that bring together adopters and partners to look at PHCs in development as a basis to discuss how to design frameworks suited to the project.
- Invitation to the PSHAN annual gala (including side events and official dinner) with VIP access to event tickets and the opportunity to invite up to 20 guests to each event.
- Opportunity to lead economic and social development which strengthens benefiting communities.
- Opportunity to generate shared value development resulting in improved competitive advantage for business and increased visibility for products and services in the PHC community.
- ADHFP logo and seal issued for use on Adopter’s website and other online assets.
- VIP invitation & speaking opportunities at all ADHFP events, including highlevel invitation-only learning & networking events, member-only webinars, and forums.
- VIP access to all information with respect to the progress and development of the Adopt-A-Healthcare-Facility Programme (ADHFP).
- Opportunity to collaborate with PSHAN, peers, and experts to directly influence policies around healthcare priority setting, policy formulation, policy implementation, and monitoring & evaluation among high-level policy actors, including Federal, State and Local governments, civil society organisations, NGOs, and communities.

Global Quality Standards

PSHAN exercises due diligence in all areas of the organisation to ensure compliance with global quality standards.

Auditing

We conduct quarterly audits of our finances and processes in accordance with accounting best practices. Because we place a high value best practices. Because we place a high value on excellence, our audits are performed by two of the Big Four accounting firms. Our external audits are conducted by KPMG, while Deloitte performs our internal our internal audits. These processes are overseen by the Governance and Finance Committee, which is composed of two board members and PSHAN's strategic advisors.

Financial Management

PSHAN maintains strict financial management as outlined in our Financial Policy. As reflected in our values, integrity is at the core of everything we do.

Thanks to the checks and balances firmly embedded in our processes, local and international donors have entrusted us with over N6 billion.

Reporting & Communication

We believe that communication is a two-way street. For this reason, we communicate regularly with members and donors about regularly with members and donors about the progress of our activities. Our annual gala, community town hall meetings, and quarterly partner forum allow us to receive feedback from our members and funders, as well as from the communities we serve, in order to achieve a Nigeria where everyone has equitable access to high-quality, affordable wellness.

Fund Allocation

The private sector thrives on the profit motive. At PSHAN, our profit motive, as measured by our impact on advancing health, is reflected in our spending priorities. All of our interventions are evidence-based and researched by the Policy Unit. We conduct a cost-benefit analysis at each stage of implementation of our programmes to provide information on scaling up and phasing out. We prioritise interventions with population-wide impact and innovative potential to strengthen the health system.

Quality Control

Excellence is at the heart of our work. Because we work in the health sector, we take deliberate care to ensure that our programmes are implemented with quality and established health sector standards in mind. All of our processes are guideline-based, our staff are trained and operate as an efficient unit that ensures our goals and the needs of the Nigerian health system remain at the highest achievable standard.

PSHAN's Successful Track Record

PSHAN's core programmes are rooted in impact, sustainability and visibility to give all Nigerians access to equitable, quality and affordable healthcare.

NHQI**Nigeria Healthcare Quality Initiative**

NHQI was conceived to address system-wide constraints that impede on better health outcomes in Nigeria.

ARC**Africa Resource Centre**

ARC mobilises stakeholders, including the private sector and academia in supporting health supply chain transformation.

ADFIN**Aliko Dangote Foundation Integrated Nutrition**

ADFIN seeks to tackle the source of hunger and malnutrition in Northern Nigeria by 60% by 2025 by breaking the vicious cycle of poverty and malnutrition.

A4EPR**Alliance for Epidemic Preparedness & Response**

A4EPR incentivises healthcare providers to invest in modern disease systems, capacity, workforce, and outbreak planning and readiness.

GAVI STEP**GAVI STEP**

GAVI STEP combines traditional learning with on-the-job training to help participants develop their problem-solving skills and foster effective team-building.

HLA**Health Leadership Academy**

HLA empowers current and future generations of healthcare professionals with the requisite skills, tools, and capabilities to address context-specific health system challenges.

HSDF**Health Strategy and Delivery Foundation**

HSDF was established to improve the quality of decision-making and execution in the health sector by providing analytical support and deploying impactful frameworks.

NHIM**Nigeria Health Innovation Marketplace**

NHIM is a country-owned private sector coalition that complements the government's efforts to accelerate health outcomes in Nigeria.

M2Zero**Malaria 2 Zero**

M2Zero takes a bold step to disrupt malaria outcomes and catalyse a path towards achieving Nigeria's pre-elimination targets.

ADHFP's Leadership Team

The ADHFP leadership team collectively contributes multidisciplinary experience to the project and the PSHAN organisation. Through the team's deep knowledge of the healthcare sector, and robust understanding of the challenges and possibilities, they expertly guide the project team and ensure the strategic objectives are met.



Dr. Tinuola Akinbolagbe

MD PSHAN

Dr. Tinuola Akinbolagbe is an experienced, highly collaborative, team player with relevant board-level experience, and a demonstrable track record in the health and allied sectors. A healthcare administrator with over two decades of experience spanning clinical medicine and health services, health insurance, health ICT, health diagnostics, and the non-profit sector. She holds a degree in Medicine & Surgery, from the College of Medicine, University of Lagos, a post-graduate diploma, and a master's in Public Health from the London School of Hygiene & Tropical Medicine, University of London.



Dr. Anne Ene Adah-Ogoh

HEAD, POLICY PSHAN

Dr. Anne Ene Adah-Ogoh is a Public Health Expert with vast program management experience and 20 years experience in project policy strategy development. Working across several international organizations, Dr. Anne holds a Medical Degree, a Master's in Public Health from the University of Western Cape, South Africa and Certification in Leadership and Management from the University of Washington. She is a member of the global Project Management Institute.



Ota Akhigbe

HEAD, MEMBERSHIPS & PARTNERSHIPS PSHAN

Ota Akhigbe is the Focal Lead for the ADHFP and is responsible for managing the programme, overseeing the project team, and high-level stakeholder engagements. She is also responsible for forging partnerships and mobilizing funding from high-level players in the organized private sector. She has funding from high-level players in the organized private sector. She has extensive experience in banking (retail, telecoms, FIs), government liaison, coaching, healthcare, and non-profit. Ota is an experienced high-performing leader with technical competence and business acumen. She is regarded as a strategic thinker and approaches her work with compassion, and dedication.



Juliet Ezeani

HEAD, ENTERPRISE RESOURCES MANAGEMENT PSHAN

Juliet Ezeani is a Chartered Accountant and a Fellow of the Association of Chartered Certified Accountants with experience in process and performance management. She has worked in various management and business development roles across the public and private sectors. She is involved with various non-profits, volunteering her skills when possible. She has a Master's degree in International Business and accomplishments in Business and Finance. She is the Head of Enterprise Resource Management at PSHAN.



Afolabi Aiyela

HEAD, CORPORATE COMMUNICATIONS PSHAN

Afolabi Aiyela is a communications and branding practitioner who has gained experience from working in corporate communications, PR, and retail branding. He is responsible for effectively communicating PSHAN's identity, values, and projects, as well as enabling and maintaining collaborations and building networks of stakeholders in the organized business and health sectors. He heads the corporate communications team that handles the creation and execution of branding collaterals, creatives and strategies, social media, content creation, media relations and events coordination targeted at promoting PSHAN





JOIN US

Our Goal Is Audacious, But The Impact Will Be Significant

What we have set out to do is no small task.

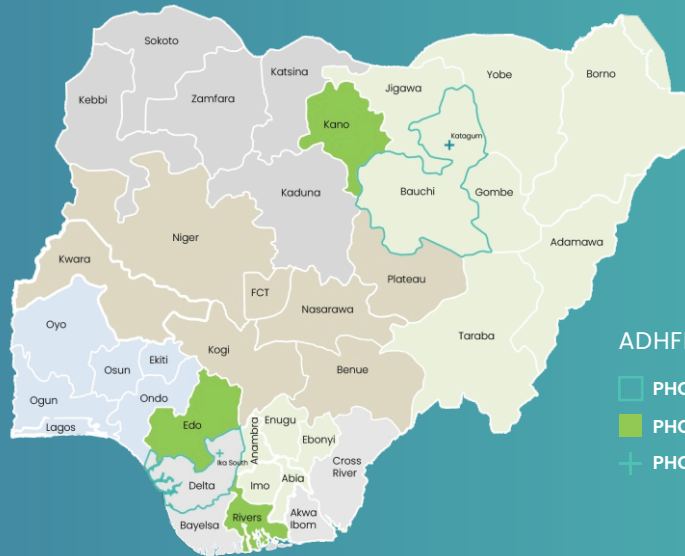
We hope to partner with and establish 774 primary healthcare centres to improve the lives of local communities in desperate need of accessible healthcare.

ADHFP will operate through a chain of integrated primary health centres, sponsored by corporations, foundations, philanthropists, or individual investors who will fund the build or upgrade of a PHC. Each PHC may be operated independently or in partnership with the government and leverage existing supply chain networks in the private and public sectors.

This is a massive undertaking, but one that we are fully committed to.

We believe in the power of collaboration to fundamentally transform the health sector. While PSHAN plays a pivotal role in Nigeria's health ecosystem, we need synergistic partnerships among stakeholders to provide access to life-saving and durable medical interventions to Nigerians in need.

Together, We Are Changing The Future Of Nigeria's Healthcare System



ADHFP Coverage Map

- PHCs adoption in progress
- PHCs adopted in all LGAs
- PHCs locations

There are many ways to get involved:



Advocate



Connect



Adopt



Volunteer



Membership



Buy Tickets

Contact Us

For more information about becoming an ADHFP adopter or PSHAN member.

memberships@pschan.org



www.pshan.org



ADOPT A
HEALTHCARE
FACILITY
PROGRAMME

CONTACT US

+2349077253255

01-4544024

memberships@pshan.org



www.pshan.org

Opening the doors to better
healthcare across Nigeria