



EMPOWER | DEVELOP | DIGNIFY

ECD & PRIMARY SCHOOL

Vision

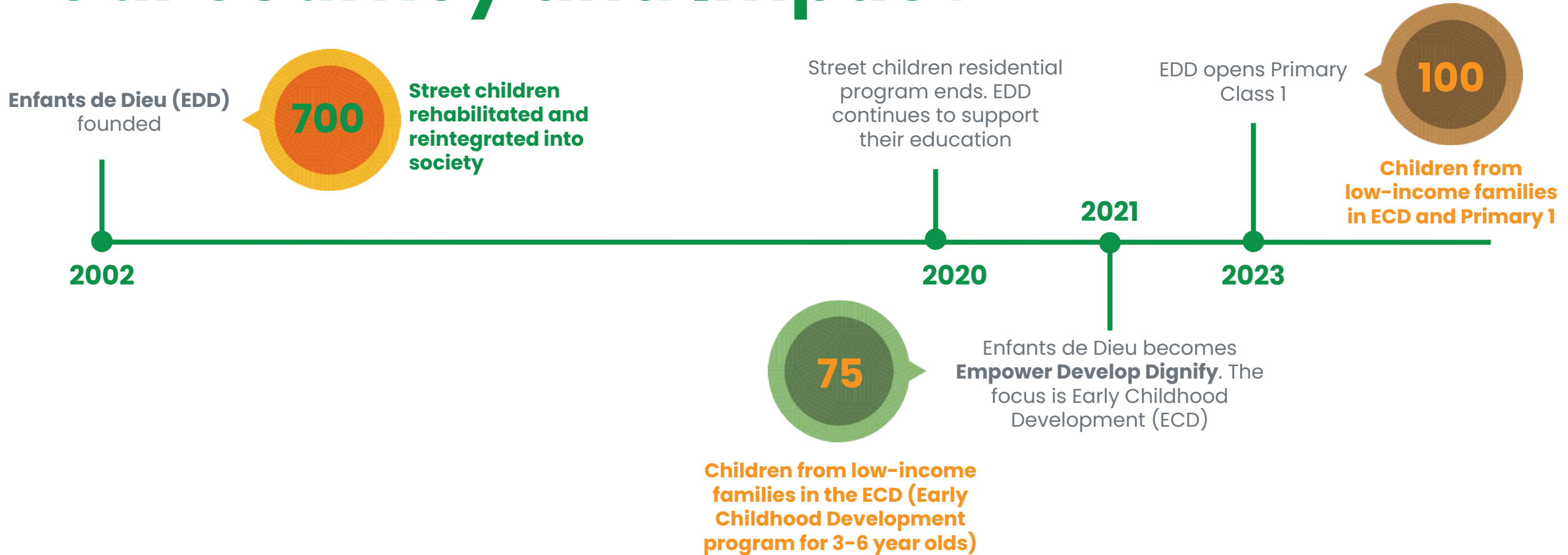
We are a school of excellence that nurtures mindful learners who thrive. The school serves as a model for other institutions across the world to create a happier, healthier, and a more peaceful world.

Mission

We aim to provide high-quality, holistic education aligned with the Rwandan CBC Curriculum to vulnerable children from low-income backgrounds to give them opportunities to flourish and prosper.



Our Journey and Impact



Why we exist

The world is changing rapidly. So is the future of work. **Rwanda is a forward-facing country with bright ambitions to meet that future.** Its vision is to be a world leader as it bounces back from a troubled past and tackles poverty and gaps in the education system.

Together with other efforts, one way it is doing this is through its **Competency Based Curriculum** – an inspiring, forward-thinking curriculum that is preparing Rwanda's youth to be **positive contributors to society** and **equipping them for the 21st Century global economy.**

Alongside **academic proficiency**, of equal importance is providing children with the **social, emotional and mindfulness skills** to have a **positive relationship** with themselves and the world around them.



What we teach: Subjects

Aligned with the Rwandan Competency Based Curriculum (CBC), empowering learners to be **academically proficient**.

- Kinyarwanda
- English
- Mathematics
- Social and Religious Studies
- Science and Elementary Technology
Includes ICT, Robotics, Environmental Studies
- Creative Arts
Includes Music, Fine Art and Craft, Dance, Drama
- Physical Education

What we teach: **Basic Competencies**

Aligned with the Rwandan Competency Based Curriculum (CBC), empowering learners to be **academically proficient**.

- Literacy
- Numeracy
- ICT
- Citizenship and National Identity
- Entrepreneurship and Business Development
- Science and Technology
- Communication in the official languages

What we teach: Life Skills

Aligned with the Rwandan Competency Based Curriculum (CBC), developing lifelong learners with **21st Century skills**.

- Critical thinking
- Creativity and innovation
- Research and problem solving
- Communication
- Co-operation, interpersonal relations and life skills
- Lifelong learning
- Digital literacy
- Financial literacy
- Resilience and flexibility
- Emotional intelligence
- Mindfulness



EDD's competencies **100% match** the World Economic Forum's 'Future of Jobs' skills report.

How we teach

Child-centric

- Personalised learning support
 - Mindful of child's needs, learning styles, strengths and challenges

Holistic

- Focus on mental, emotional, physical and spiritual development
 - A balance of academics, co-curricular programs, personal development.

Strong academic program

- Language and STEM (science, technology, engineering and mathematics) is taught using world-class methods

Hands-on

- Diverse range of hands-on materials and resources
- Practical understanding of core concepts.

Teachers facilitate learning

- Qualified and skilled teachers guide children to be leaders of their own learning.

Project- and play-based

- Collaborative projects
 - Play-based learning
- Engaging, connected to real-life, and inter-curricular.
- Core academic skills connected with real-world settings.

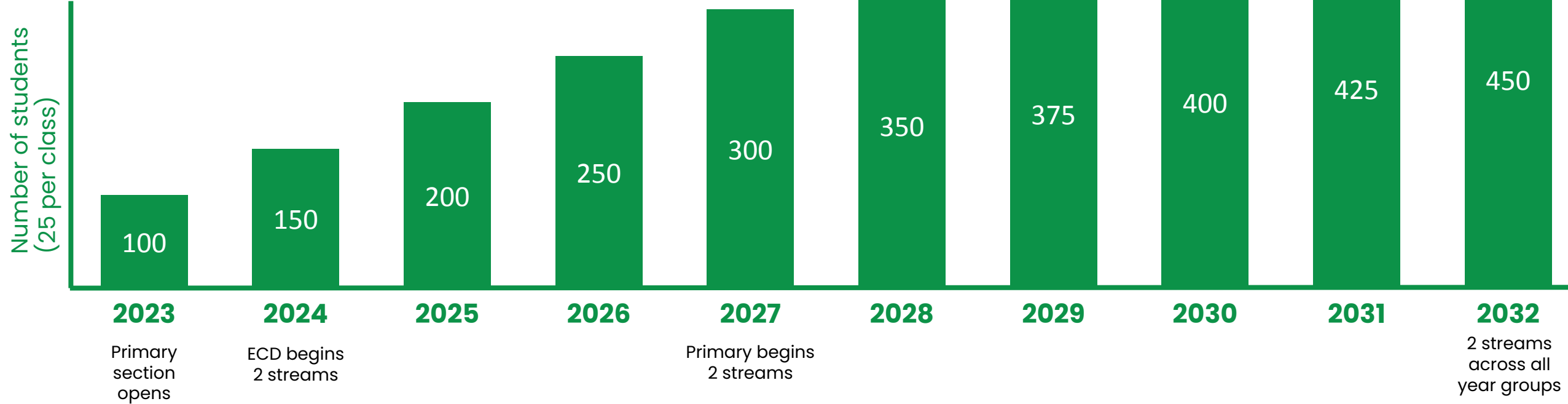
Assessment

- Formative and summative
 - Evidence based
- Accessible, equitable and fair
 - Supports progression

Social-Emotional Learning and Mindfulness

- Mindsets and skills to thrive in the 21st Century world and workplace
- Self-awareness, self-management, responsible decision-making, social awareness and relationship skills.

Looking Ahead



Facilities and Resources

Learning Areas

Classrooms

- Small class sizes: 20-25 students per class
- Spacious
- Variety of child-friendly furniture
- Hands-on learning materials

Library

- A wide range of age-appropriate fiction and non-fiction books

Creative Arts Areas

- Art and Craft, Music, Drama, Dance

STEM Areas

- Science lab, Computing, Robotics

Sports field

Playground

Support Areas

Administration block

Dining Hall and Kitchen

- Serving nutritious and tasty meals

Health

- Nurse's station, rest area, Counsellor's room

Security

How you can help

Donate at



GlobalGiving

<http://goto.gg/58055>

If you would like to support us in other ways such as fundraising or volunteering please get in touch by sending an email to support@edd.rw

Donate Once

\$25
USD

Will provide extra curricular classes (art, dance, music) for one child for a term

\$50
USD

Will cover the cost of a uniform for one student

\$100
USD

Will cover the cost of textbooks and stationery for one student for a year

\$400
USD

Will cover all costs for one child (education, uniform, materials, food) for one term

Donate monthly

\$15
USD
monthly

will provide healthy, nutritious food for one student

\$25
USD
monthly

will pay for a computer within a year to teach digital literacy to students

\$75
USD
monthly

will pay the basic salary of a teaching assistant for one class of 25 students

\$100
USD
monthly

will cover all costs for one child's education (including fees, food, materials, uniform)

\$200
USD
monthly

will pay the salary of a qualified teacher for one class

Global Giving is a 501 C 3 registered in the US and Gift Aid Registered in the UK.

EDD is a registered NGO in Rwanda and a Charitable Incorporated Organisation in the UK:
Empower Develop Dignify (EDD)
Rwanda : N.O 71/11 of 8/6/2004 (RGB)
UK : Charitable Incorporated Organization N.O 1155922



Empower | Develop | Dignify



www.edd.rw



info@edd.rw



Ndera, Gasabo, Kigali



(+250)783364738 | (+250)782057039

