



SAVOIA
Landscape . Innovate . Develop



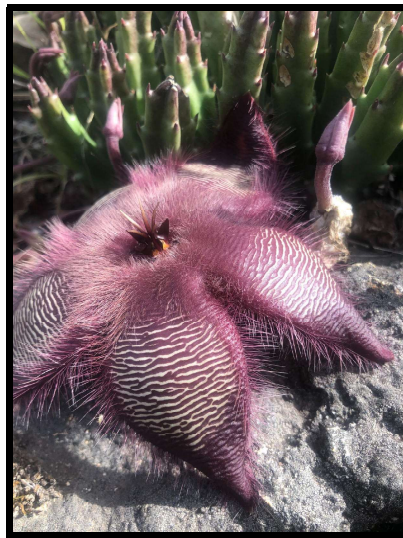
K2 INVASIVE LAND CLEARING

VINCENT MONDELL

CELL: 0762087967
EMAIL: vincentmondell@gmail.com

33 Burgundy Crescent
Westridge, Mitchell's Plain
7785

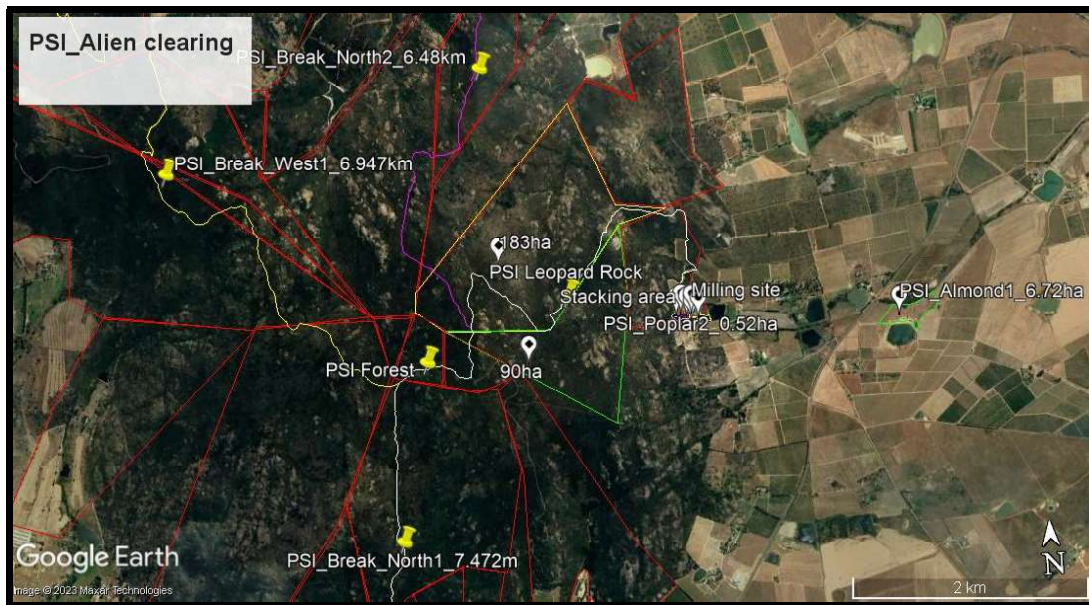
Scope of Work : Paardeberg Sustainability Initiative - Alien clearing 24 April 2023



1. Overview

Three site visits were conducted on 10 November 2022, 31 March 2023 and 21 April 2023 to inform the scope of work and to understand the broader environmental management efforts of the Paardeberg Conservancy. Alien clearing with biomass utilisation and fire break maintenance are the priorities. The areas identified for immediate alien clearing are the Poplar Blocks 1 & 2 and the Almond Block 1. Fire break maintenance may be scheduled after the aforementioned.

Savoia LID (Landscape, Innovate and Develop), represented by Berry Wessels will contract K2 Invasive Land Clearing, represented by Vincent Mondell to execute the scope of work. A service level agreement will be in place prior to work commencing. Provided by the Paardeberg Sustainability Initiative.



2. Poplar clearing Blocks 1 & 2



- Clearing will start on Block 2 working from the dam area upwards.
- Appropriate herbicide to be applied on cut stump or coppices max 10 min after cutting.
- Trees and coppices to be cut as close to the ground as possible.
- Dead biomass under the trees will be moved for access.
- Care will be taken to drop the trees away from the Wild Olives and other indigenous trees by guiding the fall with ropes. PSI oversight to be called before felling done that may damage the Wild Olive trees.
- Logs and branches more than 150mm thick will be cut to appropriate lengths to be used on the farm and conservancy roads for erosion mitigation. Lengths between 2m and up to 6m will be cut, to be carried by 2 people.
- Logs and branches to be stacked for chipping, burning or for erosion control adjacent to the access roads.

- Big trees, more than 250mm thick at the thinnest end, will be cleared after all the smaller trees have been removed. These bigger trees will be used for planking.
- Big trees will be cut in standard timber lengths, moved to the adjacent roads to be further transported by farm BLT to the Milling site.

3. Almond Block 1: Follow-up



- Uprooting and lopping/cutting of Eucalyptus and Port Jackson.
- Trees and coppices to be cut as close to the ground as possible.
- Appropriate herbicide to be applied on cut stump or coppices max 10 min after cutting.
- Biomass to be stacked for removal or burning.

4. Field Verification Table

Block	Ha	Age	Density	Alien Species	Slope (degrees)	Under foot	Obstacles	Comment
Poplar Block 1	0.5 2	Y, M to A	70%	Pine, Poplar, Bramble	50 sloping to 30 in donga	Hard	Slippery & steep slope. Rainy days	Biomass to be removed for chipping, burning and planking. Protect Wild Olives/Searsia
Poplar Block 2	0.5 2	Y, M to A	70%	Poplar & Bramble	50 sloping to 30 to 20 in donga	Hard	Slippery, very steep & rainy days	Biomass to be removed for chipping, burning and planking Protect Wild Olives/Searsia
Almond Block 1	6.7 2	Y	5%	Port Jackson, Gum & Wattle	N/A	Easy	Sloot	Biomass to be removed. Stacking

5. Herbicide use

The correct herbicides will be applied with paint brushes rather than spray. This will minimise cross contamination and ensure better surface penetration into the plant. No glyphosate or Triclopyr based herbicides will be used on the Poplar blocks due to their close proximity to vineyards. Triclopyr will be used on the follow-up Almond Block. The weather will dictate when to apply the herbicide. For example: no application on very hot days, windy days and rainy days. Herbicide is also applied within 10 min maximum after the plant has been cut. This will ensure maximum penetration through the xylem nutrient transportation channels and ensure that the application team does not miss a plant. Care is also taken not to drip herbicide on ground.

Species	Age	Method	Herbicide		
			Active Ing.	Trade name and additives	Dose/10L water
Black Wattle Acacia Mearnsii	Young	Lop, prune	Triclopyr	Turbodor	Ready to use
	Old	Cut stump	Triclopyr	Turbodor	Ready to use
Port Jackson Acacia Saligna	Young	Lop, prune & pulling	Triclopyr	Turbodor	Ready to use
	Old	Cut stump	Triclopyr	Turbodor	Ready to use
White Poplar Populus Alba	Young	Lop, prune	Imazapyr	Eco-Imazapyr	500ml, 5%
	Old	Cut stump	Imazapyr	Eco-Imazapyr	500ml, 5%
Eucalyptus	Young	Lop, prune	Imazapyr	Eco-Imazapyr	500ml, 5%
	Old	Cut stump Spray coppis	Imazapyr	Eco-Imazapyr	500ml, 5%
Pine	Young	Lop, prune	No herbicide. Stack with other plants for processing		N/A
	Old	Cut stump			
Brambles	N/A	Lop, prune	Imazapyr	Eco-Imazapyr	500ml, 5%

6. Health and Safety

- Necessary PPE, fire fighting equipment and Health and Safety checks in place.
- “Toolbox Talk” every morning before work starts.
- Contractor on site everyday in early morning and late afternoon.

7. Team Composition

- 6 Man crew and team size will double on granted Saturdays.
- 1 Supervisor, 2 chainsaw operators, 2 herbicide applicators and 1 puller/stacker.
- Contractor on site every morning and afternoon.

- Inspector (Savoia LID) at the end of the week.

