



URDA

**WINTERIZATION
2021-2022**



Project Name

General Winterization - 2021-2022



Project Justification

Lebanon in 2021 is facing a humanitarian crisis that is on the rise, with 55% of the country’s population living below the poverty line, Poverty is affecting 74% of the population of Lebanon. A study issued by the United Nations Economic and Social Commission for Western Asia "ESCWA" under the title "Multidimensional Poverty in Lebanon: A Dire Reality and Unclear Prospects", highlighted that "poverty in Lebanon has dramatically worsened in just one year, as it now affects approximately 74% of the population. Total population If broader dimensions of income are considered, such as health, education and public services, the proportion of people living in multidimensional poverty reaches 82% of the population”.

Recently, ESCWA released new data updates, estimating that the proportion of the population living in multidimensional poverty has nearly doubled between 2019 and 2021 from 42% to 82%.

The study states that "the overlapping shocks to the exchange rate, which has been constant since the beginning of the century, generated enormous pressures, as the currency depreciated and inflation rates rose from June 2019 to June of this year by 281%. The standard of living of the Lebanese and non-Lebanese population declined.

With a rapidly deteriorating economy, massive disturbances in the monetary status, political turmoil, the implication of Covid-19 outbreak on the economy, Unemployment rising to 40 % with no sure signs of any improvement soon, layoffs on a massive scale that have disrupted the livelihood of thousands of households and the ongoing fuel crisis, the most vulnerable families can barely survive the day and are in desperate need of support and humanitarian projects to sustain a decent living.

As for the Syrian refugees in Lebanon, almost 90% of them live under the poverty line in Lebanon while 55 % of them live under extreme poverty line in unsustainable urbanization in an already vulnerable and fragile context. The same condition applies to Palestinian refugees living in camps where 80% of them live in extreme poverty as well.

The increase in prices is exponential, it’s not coming to a pause and all the main consumables are experiencing this increase constantly. The prices of the food items increased to 404%, Clothing and footwear increased to 559%, Furnishings and household equipment increased to 655%, transportation increased to 255% all while income sources are decreasing.

Winter 2021-2022 will pose a serious threat to the most vulnerable families and the need for humanitarian aid projects is high this year more than ever. Food security, safe shelter and general health and wellbeing is threatened for millions of individuals leaving them helpless to face the worst crisis in the history of Lebanon with only aid agencies to turn to.

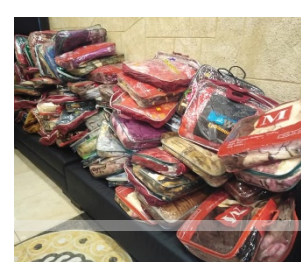
URDA’s annual winterization campaign is to provide Core Relief Items that include FI’s (Food Items) and NFI’s (Non-Food Items) from heaters to food parcels, Heating Fuel, plastic sheets, winter clothing, blankets, Mattresses, hygiene kits and hot meals. The campaign aims to Elevate the resilience of the most vulnerable populations via provision of all CRI’s (Core Relief Items) (FI’s and NFI’s) to the most vulnerable families of Syrian refugees, Palestinian refugees, and Lebanese families in all Lebanese governates.



Project Description:

The project is targeting the most vulnerable families that are not living in deplorable conditions of all nationalities to provide them with their needs according to the latest needs assessment and as per the needs of each targeted population. The Below table briefs up the aid items to be distributed and their frequency:

Locations	Items	Frequency
North Lebanon – South Lebanon – Beqaa – Aarsal – Beirut & Mount Lebanon	Food parcels	5 months
North Lebanon – South Lebanon – Beqaa – Aarsal	Heating Fuel	4 months
North Lebanon – Beqaa – Aarsal - South Lebanon	Heaters	Once
North Lebanon – Aarsal – Beqaa	Plastic sheets	Once
North Lebanon – Beqaa – Aarsal	Blankets	Once
North Lebanon – Beqaa – Aarsal	Mattresses	Once
North Lebanon – South Lebanon – Beqaa – Aarsal – Beirut & Mount Lebanon	Hygiene kits	3 months
North Lebanon – South Lebanon – Beqaa – Aarsal – Beirut & Mount Lebanon	Winter clothing vouchers	Once
North Lebanon – South Lebanon – Beqaa – Aarsal	Hot Meals	3 months





Project Beneficiaries

Location	# Families	Nationality	CRI's needed
South Lebanon	1000	Syrian, Lebanese & Palestinian	Food parcels – Clothing Vouchers – Hot meals – (500) Heaters - Hygiene Kits – Heating Fuel
Beirut – Mount Lebanon	1000	Syrian Lebanese & Palestinian	Food parcels – Clothing Vouchers – Hygiene Kits
Beqaa	1500	Syrian, Lebanese & Palestinian	Food parcels – Clothing Vouchers – Hot meals – Plastic Sheets (500) – Blankets – Mattresses – Heaters (500) - Hygiene Kits - Heating Fuel
North Lebanon	1500	Syrian, Lebanese & Palestinian	Food parcels – Clothing Vouchers – Hot meals – Plastic Sheets (500) – Blankets – Mattresses – Heaters (500) - Hygiene Kits - Heating Fuel
Aarsal	1500	Syrian & Lebanese	Food parcels – Clothing Vouchers – Hot meals – Plastic Sheets (500) – Blankets – Mattresses – Heaters (500) - Hygiene Kits - Heating Fuel
Total	6500 Families	URDA's Standard Nationalities Beneficiaries percentage is 60% Syrian Refugees, 20 % Palestinian Refugees, 20 % Lebanese Families.	



The Project Location

Lebanon: Beqaa – North Lebanon - Aarsal – Mount Lebanon – South Lebanon – Beirut



Project period

5 months during winter 2021-2022



Project Objective :

Provide the needed support to enhance the living conditions of the most vulnerable populations of Syrian & Palestinian refugees and the most vulnerable Lebanese families, living in deplorable conditions via distribution of winter related core relief items that include food and nonfood aid items, according to URDA's vulnerability criteria and latest needs assessments.



Outcome 1.1

Enhancing Food Security for the most vulnerable Lebanese families, Syrian refugees and Palestinian refugees living in Beqaa, Aarsal, North Lebanon, South Lebanon, Mount Lebanon, and Beirut for of 5 months by distributing 32,500 food parcels & 16,500 Hot meals.

Output 1.1

Provision of 32,500 Food Parcels for the most vulnerable families of Lebanese families, Syrian refugees, and Palestinian refugees in the targeted locations for the period of 5 months during winter.

Output 2.1

Provision of 16,500 hot meals for the most vulnerable families of Lebanese families, Syrian refugees, and Palestinian refugees in the targeted locations for the period of 5 months during winter.

Activity 1.1

Distribution of 32,500 food parcels for the most vulnerable families of Syrian & Palestinian Refugees and Lebanese families who would receive 1 parcel monthly for the duration of 5 Months during winter in the targeted locations.

Activity 2.1

Distribution of 16,500 family hot meals for the most vulnerable families of Syrian & Palestinian Refugees and Lebanese families who would benefit from hot meals for the family monthly for the duration of 3 Months in the targeted locations.

Outcome 2.1

Increase the resilience of the most vulnerable Lebanese families, Syrian refugees and Palestinian refugees living in Beqaa, Aarsal, North Lebanon, South Lebanon, Mount Lebanon, and Beirut during winter via provision of core relief items made up of 2,000 heaters – 10,000 blankets (2 per family) – 10,000 Mattresses (2 per family) – 6,500 Clothing Vouchers - 800,000 Liters of heating fuel.

Output 2.1

Population affected by seasonal hazards benefits from in-kind assistance.

Activity 2.1

Distribute In-Kind Assistance for Seasonal Hazards-Affected Households in the form of 2,000 heaters for the most vulnerable families in Beqaa, Aarsal, South and North Lebanon.

Activity 2.2

Distribute In-Kind Assistance for Seasonal Hazards-Affected Households in the form of 10,000 blankets for the most vulnerable families in Beqaa, Aarsal and North Lebanon where each family would receive 2 blankets.

Activity 2.3

Distribute In-Kind Assistance for Seasonal Hazards-Affected Households in the form of 10,000 mattresses for the most vulnerable families in Beqaa, Aarsal and North Lebanon where each family would receive 2 mattresses.

Activity 2.4

Distribute In-Kind Assistance for Seasonal Hazards-Affected Households in the form of 6,500 Clothing Vouchers for the most vulnerable families in Beirut, South Lebanon, Mount Lebanon, Beqaa, Aarsal and North Lebanon.

Activity 2.5

Distribute In-Kind Assistance for Seasonal Hazards-Affected Households in the form of 800,000 Liters of heating fuel for the most vulnerable families of Syrian refugees & Lebanese citizens in Beqaa, Akkar, Aarsal & South Lebanon where each family would receive 40 liters / month of heating fuel for the duration of 4 months during winter.

Outcome 3

Safer Shelter for 1500 family of the most vulnerable families of Syrian Refugees living in informal tented settlements in Beqaa, Aarsal and Aakkar.

Output 3

Population affected by seasonal hazards benefit from weatherproofing of their shelters for Syrian refugees living in informal tented settlements in Beqaa, Aarsal and Aakkar.

Activity 3

Weatherproofing And / Or Maintenance of Makeshift Shelters Within Informal Settlements for 1500 of the most vulnerable Syrian refugees living in informal tented settlements in Beqaa, Aarsal and Aakkar.

Outcome 4

Increase the resilience of the most vulnerable families living in Beirut, South Lebanon, Mount Lebanon, Beqaa, Aarsal and North Lebanon by distributing 19,500 hygiene kit to the most vulnerable Lebanese families, Syrian and Palestinian refugees to maintain good health and wellbeing where the targeted families would receive the kit for the duration of 3 months.

Output 4

The Most vulnerable families benefit from a hygiene kit to ease the financial burden of these necessary products vital to ensure their health and general wellbeing.

Activity 4

Distribution of 19,500 Hygiene kits for the most vulnerable families living in Beirut, South Lebanon, Mount Lebanon, Beqaa, Aarsal and North Lebanon of the most vulnerable Lebanese families, Syrian refugees, and Palestinian refugees for 3 months.



Project budget

Item	Quantity	Unit cost (\$)	Total Cost (\$)
Food Parcels	32,500	30	975,000
Plastic Sheets	1,500	150	225,000
Heaters	2,000	70	140,000
Blankets	10,000	14	140,000
Mattresses	10,000	14	140,000
Clothing Vouchers	6,500	50	325,000
Hygiene Kits	19,500	30	585,000
Hot Meals	16,500	15	247,500
Heating fuel (tank of 20 liters)	40,000	12.37	494,800
Gallons of 20 Liter	40,000	3.4	136,000
Banner (for all project in all 6 locations)	52	20	1040
Roll up (for all project in all 6 locations)	52	70	3640
Stickers	130500	0.7	91350
Coupons	108,500	0.3	32550
Sub Total (USD)			3,536,880
Administrative Fees (10%) in USD			353,688
Total Budget (USD)			3,890,568

Note: All prices are subject to increase (20%) upon purchase date due to the condition of the market.

