



# WESTERN RIVERS CONSERVANCY

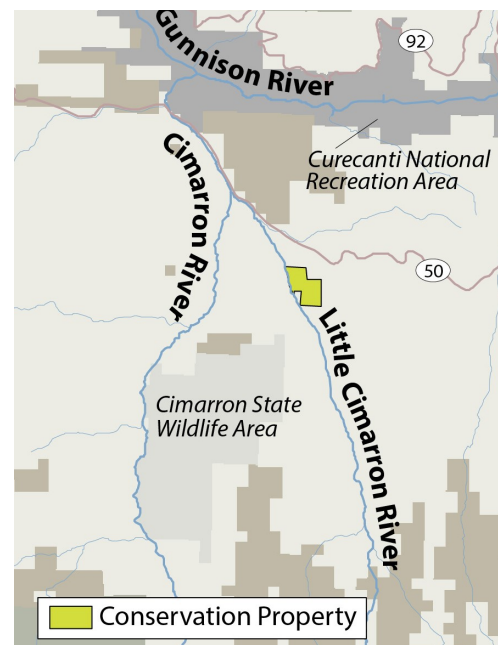
www.westernrivers.org

Global Giving  
Project Report Photos  
July 2020

## *Little Cimarron River, Colorado: Returning perennial flows to an outstanding Colorado trout stream*

In Colorado's Southern Rocky Mountains, Western Rivers Conservancy just completed a groundbreaking effort to return much-needed water to the Little Cimarron River, one of the Centennial State's topnotch trout streams. WRC's pioneering efforts to rewater this stretch of the Little Cimarron River will ensure this trout stream flows top to bottom all year long. The project sets a new precedent for keeping water in stream while meeting the needs of local agriculture. To keep the river running cold all year, Western Rivers Conservancy bought a former dairy farm in 2012 that diverts substantial water from the Little Cimarron. While holding the land, we conveyed the water rights to Colorado Water Trust in 2014. Working alongside the trust, we established a split-season irrigation agreement that helps ensure adequate flows for fish during the driest summer months, while allowing the farm to draw water at other times. The project's innovative split-season approach is the first of its kind in Colorado.

*Russ Schnitzger Photo*



## *John Day River, Oregon: Expanding public lands and protecting habitat along a wild and scenic river*

Deepening our work on Oregon's John Day River, Western Rivers Conservancy is poised to acquire a critical three-mile stretch of the lower John Day, at McDonald's Ferry. The effort will protect a key boater take out, create new river access, preserve a historic segment of the Oregon Trail and improve crucial spawning and rearing habitat for John Day steelhead. This summer, WRC hopes to purchase the 4,100-acre McDonald's Ferry property, named for the historic ferry that settlers used to cross the John Day River on their journey west. Today, the property is critical for boaters as the last take-out before the river winds into a 10-mile roadless reach and then careens over the un-runnable Tumwater Falls. Until now, public access to the John Day River at McDonald's Ferry has been uncertain. To guarantee permanent river access, WRC plans to purchase the property and convey it to the BLM for protection within the John Day Wild and Scenic River corridor. Our efforts will also create new access to three miles of the John Day River.

*Sage Brown photos*

