



# WESTERN RIVERS CONSERVANCY

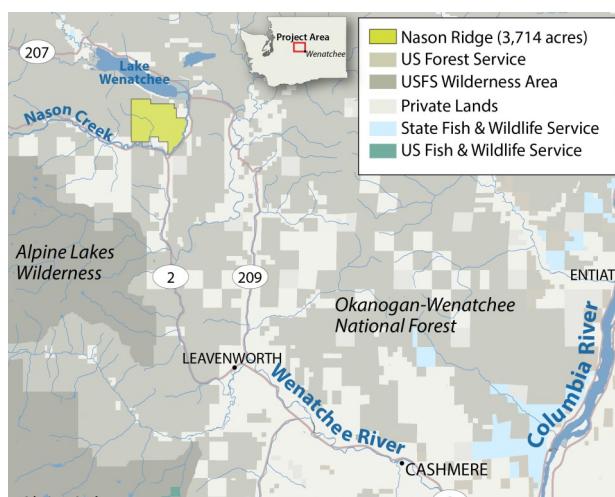
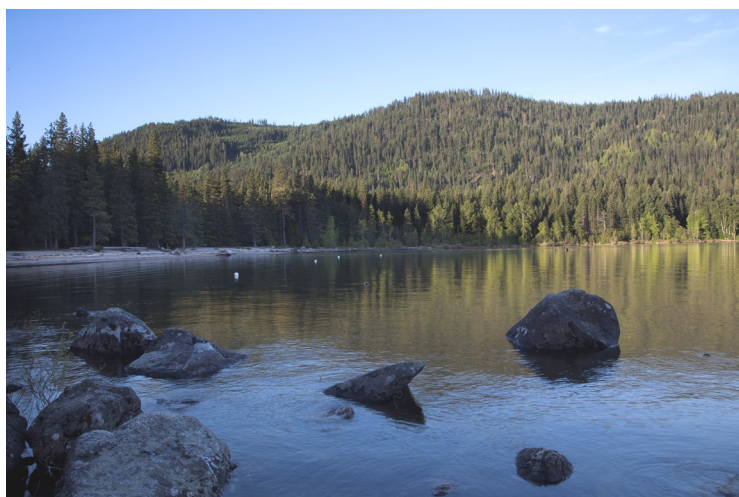
www.westernrivers.org

Global Giving  
Project Report Photos  
September 2018

## *Nason Creek, Washington: Saving a Treasured Mountainside for Fish, Wildlife and People*

On Washington's Lake Wenatchee, a 3,714-acre parcel of forested mountainside known as Nason Ridge rises above the lakeshore, surrounded almost entirely by the Okanogan National Forest. It is crisscrossed by a network of hiking, mountain-biking and cross-country skiing trails enjoyed by people from all over, and which link to an equally robust trail system in the neighboring Lake Wenatchee State Park. The property also spans 2.5 miles of Nason Creek, a critical source of cold, clean water for the Wenatchee River and a lifeline for imperiled salmon, steelhead and bull trout. In June, Western Rivers Conservancy purchased the land from Weyerhaeuser, and launched a fundraising campaign with the Wenatchee-based Chelan-Douglas Land Trust to raise the money needed to permanently conserve the property. For now, WRC will hold the land, allowing public use and enjoyment of the property while we work to secure funding to permanently protect this special place.

*John Marshall Photo*



## *John Day River, Oregon: Expanding Our Efforts on Oregon's Wild and Scenic John Day*

On Oregon's lower John Day River, WRC purchased a second ranch on Thirtymile Creek. The purchase complements our ongoing effort to conserve Thirtymile Creek and ten miles of the John Day, while creating new recreational access to over 75,000 acres of public BLM lands surrounding the ranches. Thirtymile Creek is the largest tributary to the lower John Day and one of the most important spawning streams for the river's critical run of wild summer steelhead. The 2,939 acres we purchased in June, part of the Campbell Ranch, span five miles of the creek, immediately upstream of the Rattray Ranch. Combined, these projects will enable restoration and protection of nine crucial miles of Thirtymile Creek. WRC is now working to transfer the ranches to the BLM, creating the only public access to a 70-mile stretch of the Wild and Scenic John Day River corridor.

*Tom and Pat Leeson Photo*

