



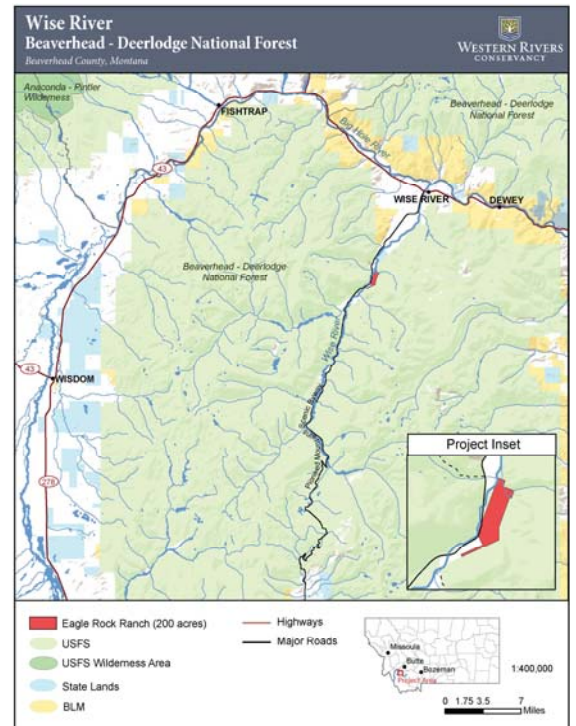
WESTERN RIVERS CONSERVANCY

www.westernrivers.org

Global Giving
Project Report Photos
July 2021

Wise River, Montana: Returning water to the Wise to protect the Big Hole's arctic grayling.

At the heart of Montana's Big Hole Valley, WRC has launched an effort to return critically needed water to the Wise River by conserving a 200-acre ranch on the banks of this legendary trout stream. The Wise is a major tributary to the Big Hole River, one of Montana's renowned fly fishing streams, and the Lower 48's last remaining stronghold for fluvial Arctic grayling. This summer, WRC will purchase a 200-acre ranch that controls the upper-most water rights on the Wise River. Once we secure funding, we intend to convey the property to the Beaverhead-Deerlodge National Forest and ultimately dedicate the ranch's water in-stream in partnership with Trout Unlimited's Western Water Project. This will allow us to permanently return 11 CFS of water to the Wise River, a significant amount of water for a stream this size.



Elk and Crow Creeks, Oregon: Working to permanently protect two critical streams for Snake River steelhead.

In a remote and rugged river canyon in eastern Oregon, WRC has purchased 453 acres along Elk and Crow creeks, crucial headwater streams for two of Oregon's wild and scenic rivers: Joseph Creek and the Grande Ronde. WRC purchased the property in March, and we are now working to transfer the lands to the Wallowa-Whitman National Forest to ensure they remain permanently intact for the benefit of fish and wildlife. Our efforts will also guarantee continued public access to major portions of the Wallowa Valley Ranger District and Hells Canyon National Recreation Area.

Ellen Bishop photo

