



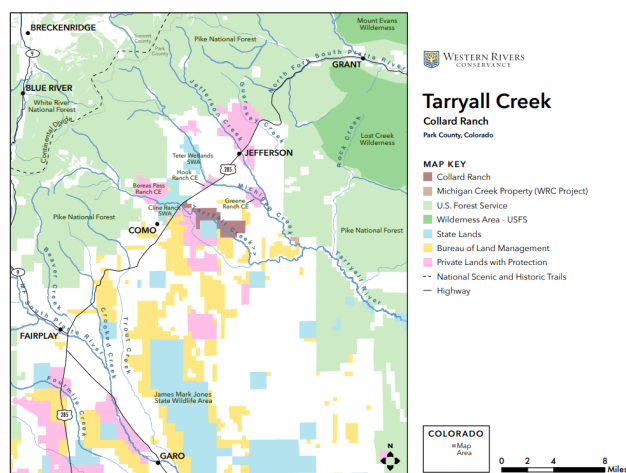
# WESTERN RIVERS CONSERVANCY

www.westernrivers.org

Global Giving  
Project Report Photos  
June 2024

## Colorado's Tarryall Creek: Five-Mile Stretch of Prized Fly Water Forever Conserved

The South Platte River is the biological and scenic centerpiece of South Park, one of three major high-altitude basins within the Front Range of Colorado. One of the river's principal tributaries is Tarryall Creek, which flows from Mount Silverheels and is renowned for its excellent brown and rainbow trout fishing. Immediately off Highway 285 and roughly 10 miles northeast of the town of Fairplay, Tarryall Creek flows through the 1,860-acre Collard Ranch. For five miles, the stream meanders through the ranch's open grasslands. With its sweeping vistas, open meadows and stream at the heart of the property, the ranch is without a doubt one of the ecological, scenic and recreational gems of South Park. In March, WRC permanently conserved Collard Ranch, in partnership with CO Parks and Wildlife and Great Outdoors Colorado. Now in the hands of CPW, Collard Ranch will soon be open to the public, offering new fishing and hunting access along all five miles of Tarryall Creek. *Christi Bode photo*



## Washington's Bear River and Willapa Bay: Adding Salmon Habitat and Old-Growth to Willapa NWR

Washington's Willapa Bay is the second largest estuary on the West Coast. Teeming with life, salmon, steelhead, sea-run cutthroat and Pacific lamprey come and go with the seasons, and more than 200 species of birds have been documented across the bay. Much of Willapa Bay is protected within the Willapa National Wildlife Refuge, which was created in 1937 and includes some of the best habitat for the area's incredible fish and wildlife. It's also home to a trove of recreation opportunities, including paddling, birding, hiking, hunting and wildlife watching. This winter, WRC was able to add the remarkable 2,366-acre Willapa Coastal Forest property to the refuge, permanently protecting three miles of the Bear River, along with a network of smaller streams and critical stands of old-growth forest. This is an exciting achievement, building on the refuge's recent restoration efforts in the estuary, where juvenile salmon rear in tidal habitat after emerging. *Tyler Roemer photo*

