



# WESTERN RIVERS CONSERVANCY

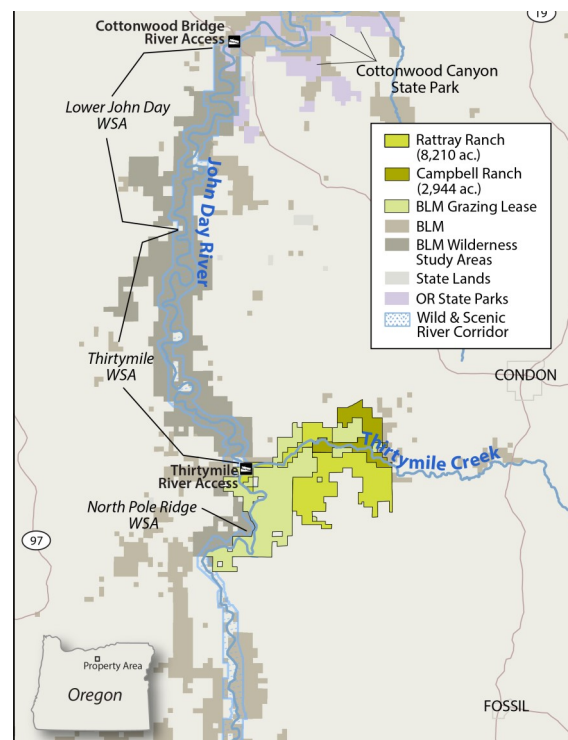
www.westernrivers.org

Global Giving  
Project Report Photos  
December 2019

## *John Day River, Oregon: Protecting a steelhead stronghold in the heart of the sagebrush-steppe*

On Oregon's Wild and Scenic John Day River, WRC has wrapped up a major accomplishment at Thirtymile Creek that will benefit the river's critical run of wild steelhead, conserve prime habitat for wildlife and improve public river access at the heart of a spectacular river canyon. After a five-year effort, we completed transfer of the Rattray and Campbell ranches to the Bureau of Land Management, forever protecting the lower nine miles of Thirtymile Creek, right where it flows into the John Day. The effort protected 10 miles of the main-stem John Day and 22,032 acres of prime wildlife habitat. At the same time, we secured prized public boating access to a prime stretch of the river and created a new recreational gateway to 78,000 acres of rugged sagebrush country—public land that was previously impossible to reach without a boat.

*Dave Jensen Photo*



## *Rio Grande, Colorado: Creating a new wellness park for the City of Alamosa*

On the banks of the upper Rio Grande, we've added a stunning new riverfront park to the city of Alamosa. In October, we cut the ribbon on Alamosa Riparian Park, which now protects more than a mile of open space along the Rio Grande. Long-anticipated by the community, the park joins the city's growing green-space offerings, which connect residents to their backyard river. The park itself adds more than five miles of nature trails where people can stay active and reconnect with the outdoors. Before October, access to the Rio Grande was limited, even though the river winds along the edge of town. The community has wanted better access to the river for years and, in 2017, we partnered with the city to make this a reality. WRC purchased two adjacent properties from families who, like WRC, wanted to keep the land undeveloped as public open space. This fall, we conveyed the land to the city, and now Alamosa Riparian Park is open for all.

*Christi Bode photo*

