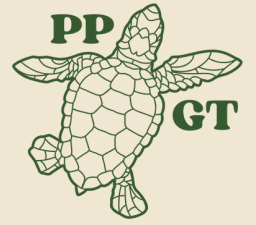


# Proyek Penyu



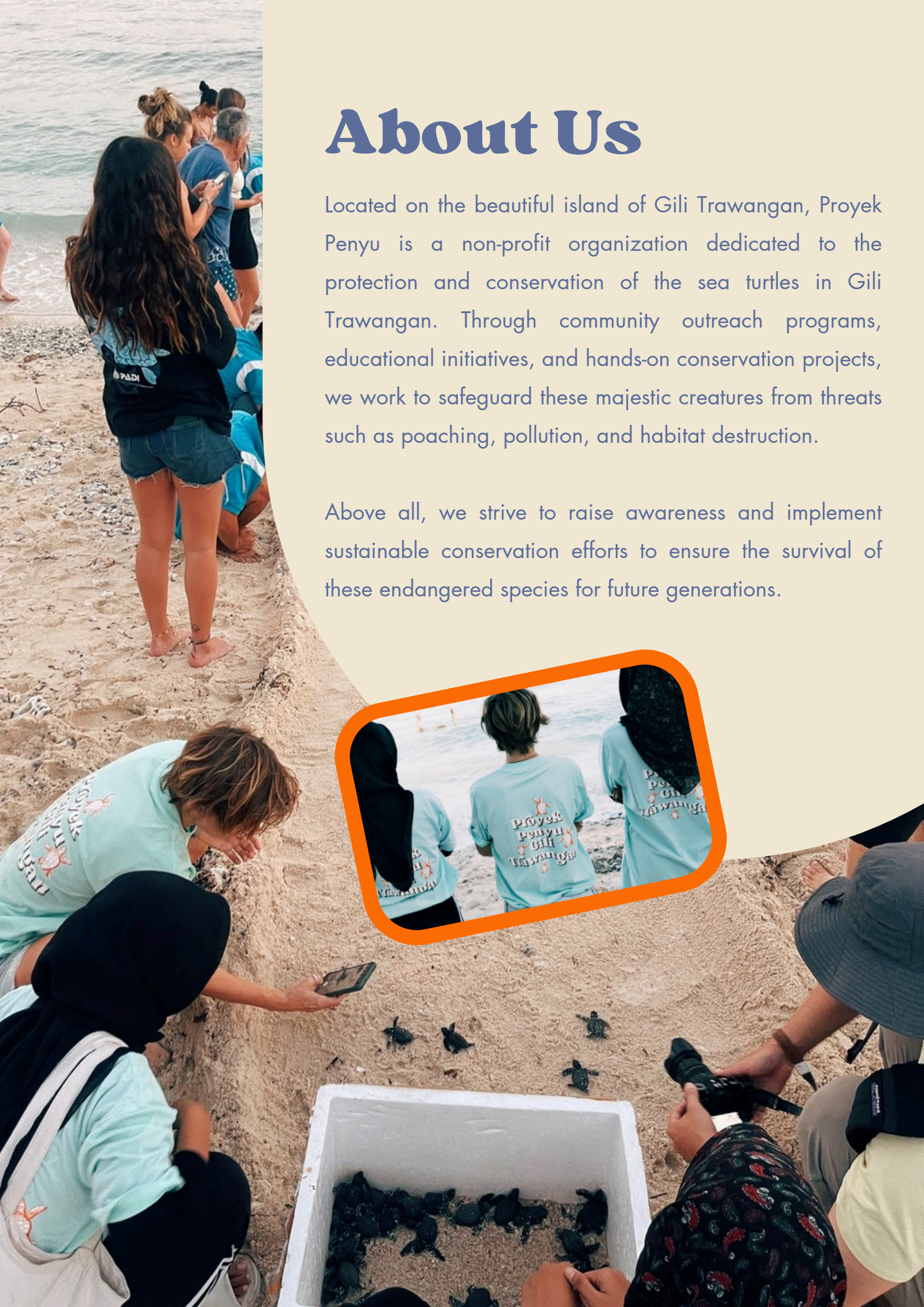
Gili Trawangan, Lombok 2024



# About Us

Located on the beautiful island of Gili Trawangan, Proyek Penyu is a non-profit organization dedicated to the protection and conservation of the sea turtles in Gili Trawangan. Through community outreach programs, educational initiatives, and hands-on conservation projects, we work to safeguard these majestic creatures from threats such as poaching, pollution, and habitat destruction.

Above all, we strive to raise awareness and implement sustainable conservation efforts to ensure the survival of these endangered species for future generations.







## How it started, and why we do what we do

Visitors to the Gili Islands have the rare opportunity to witness encounters with endangered Green and critically endangered Hawksbill turtles year-round. However, the islands' growing popularity, coupled with a lack of education among beachfront businesses, has led to a concerning trend. Reduced nesting opportunities may ultimately lead to a decline in the turtle population on the islands in the future. Irresponsible coastal development and pollution from tourism activities also pose significant threats to the turtles' nesting habits and could potentially endanger the long-term sustainability of the tourism industry on the Gili islands.

If we don't do anything, the situation could very much worsen.



# Our Programs: TRAININGS

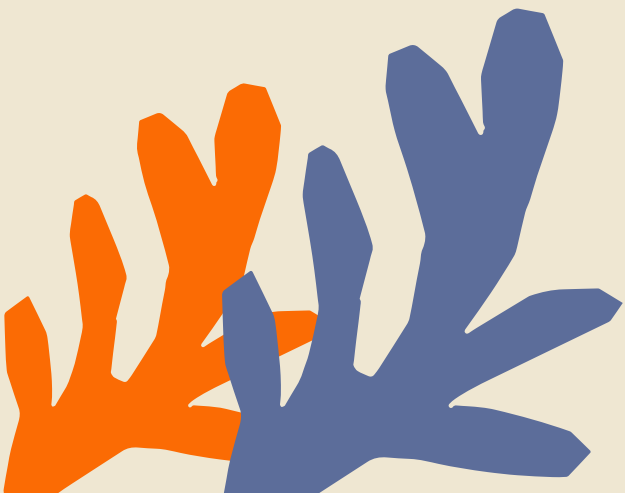
In order to achieve our goal of educating local residents and visitors in the area, we conduct two training sessions tailored to different levels of involvement and expertise in this project:

## **Local Businesses Training**

This training is designed for individuals who work along the beach and beachfront business owners who may have sea turtle nesting on their premises. The aim is to equip them with the necessary knowledge and skills to effectively manage and educate others on proper protocols in case of turtle landings.

## **Turtle Tracker Training**

This training is intended for individuals and possibly tourists in Gili who are interested in volunteering to patrol the island, identifying turtle tracks, reporting sightings, and locating potential turtle nests. Participants are instructed on how to recognize turtle tracks and properly document them, so we can know the trend better and adapt accordingly.





# Our Programs:

## TURTLE LANDINGS

Our approach is to interfere as little as possible. However, there are instances where intervention is necessary to higher the survival rates significantly.

### WHEN A TURTLE NESTS IN AN IDEAL SPOT

Our turtle trackers mark the nest and conceal the tracks on their walks in the morning. On the same day later, our team secures a protective cage over the nest, closely monitoring it until the hatchlings emerge.

### WHEN A TURTLE NESTS IN A "BAD SPOT"

For example, if a nest is too close to the ocean and at risk of flooding, our team relocates it to a safer location. The same protective cage will be put over the nest and it will be monitored until the hatchlings emerge.



# Our Programs:

## TURTLE HATCHLINGS



With the same thinking in mind, we developed some protocols whenever hatchlings emerge from their nests.

### **DURING IDEAL CONDITION**

When the conditions are ideal for the hatchlings to navigate their way to the sea, we collaborate with people nearby to construct a sand channel originating from the nest towards the sea. This channel allows the hatchlings to crawl and imprint on the sand, ensuring that they establish a memory of the path to the sea. This helps the hatchlings to recognize the location when they reach adulthood and are ready to return to lay their eggs.

### **DURING BAD CONDITION**

During bad weather or low tide periods, our team will temporarily shelter the hatchlings in a safe environment where they can rest and gather their strength before making their way to the sea. They will then be released under more favorable conditions, following the same process as during ideal circumstances.







## More Info:

[www.proyekpenyu.co.id](http://www.proyekpenyu.co.id)

[@proyekpenyu.gili](https://www.instagram.com/proyekpenyu.gili)

[hello@proyekpenyu.co.id](mailto:hello@proyekpenyu.co.id)

Gili Trawangan, Lombok, Indonesia

