



A Beautiful smile is simply... **PRICELESS**

1500+
patients
treated per year



BOARD OF TRUSTEES

Usama Hamdan, MD, FICS

Co-Founder & President, Global Smile Foundation
*Board Chair

Jay Schnitzer, MD, PhD

Vice President and Chief Technology Officer,
Mitre Corporation
Former Director Defense Sciences Office,
Defense Advanced Research Projects Agency
(DARPA)

Krishna Patel, MD, PhD

Associate Professor, Director of Facial Plastic &
Reconstructive Surgery, University Hospital
of South Carolina
*Board Secretary

Raymond Ciccolo

Founder & President, Village Automotive Group
Founder & President, Ciccolo Family Foundation

Christopher Hughes, DMD, PhD

Former Chair & Program Director, Pediatric
Dentistry & Community Oral Health, University of
Mississippi Medical Center

Talal Ali Ahmad

GSF Director of Information Technology
*Board Treasurer

Navil Sethna, MD, FAAP

Professor of Anesthesia, Harvard Medical School
Clinical Director, Mayo Family Pediatric Pain
Rehabilitation Center, Department of Anesthesia,
Boston Children's Hospital

BOARD OF ADVISORS

Tripp Amdur

Group President of Medline Industries
Medline Director in Europe, Asia, & Australia

Babak Azizzadeh, MD, FACS

Chairman & Director, Center for Advanced Facial
Plastic Surgery
Associate Clinical Professor of Surgery, UCLA

Rebecca Binder

Executive Director, Benco Family Foundation

George Blaser

President, Coast to Coast Medical

Mary Ann Boyle Murray, MBA, MPH

Principal, MBM Development Communications

Paul Cody

Corporate Operations Specialist, Prospect Airport Service

RG Conlee

President & CEO, Tylark Corporation

Joe Daher

President, Kai Capital Management

Denise Franco Mera, Esq., MBA

President, Fundación Global Smile-Ecuador

Stephen Harris, MD, FACS

Chief of Plastic Surgery, Good Samaritan Hospital

Laura Hetzler, MD, FACS

Program Director & Associate Professor, Department of
Otolaryngology-Head & Neck Surgery, Louisiana
State University Health Sciences Center

Robert Karch, MD, MPH

Deputy Secretary for Children's Medical Services, Florida
Department of Health
Associate Professor of Pediatrics, University of
Central Florida College of Medicine

Serena Kassam, DMD

Assistant Clinical Professor, New York University
College of Dental Medicine
Clinical Assistant Professor, Faculty of Dentistry,
University of British Columbia, Vancouver

Eric Kaufman, AB, LL.B

Partner, Kaufman & Kaufman, Attorneys

Kristine Marcy

Former President & CEO, National Academy of
Public Administration

Steven Maturo, MD, LT Colonel, USAF, MC, FS

Former Director, Pediatric Otolaryngology, Walter Reed
Army Medical Center

Kenneth Pellegrino, CEBT

Manager, Clinical Engineering, Massachusetts Eye &
Ear Infirmary

Alan Silverstein

Managing Member, New You, LLC



OUR MISSION & PHILOSOPHY

Global Smile Foundation (GSF) is a not-for-profit organization whose founders and volunteers have been providing comprehensive cleft care to underserved communities around the world for *35 years with focus on interdisciplinary cleft care and training initiatives* to build capacity for **sustainable cleft care** in these areas.

We provide care that goes well **beyond fragmented corrective surgeries** to include the **full range of care** that a patient would receive at **well-established cleft centers**. In addition to surgical procedures, comprehensive care includes:

- Pre-surgical dental orthopedics
- Feeding and nutrition counseling
- Dental and orthodontic treatment
- Speech therapy
- Psychosocial support
- Patients and their families also receive education and information about post-op care, nutrition, and cleft prevention.

We return to the same locations annually and are thus able to provide **individualized follow-up care** for our patients and a **continuity of care**. Our approach enables us to facilitate the best health outcomes for our patients and gives them the opportunity to **live full, productive lives** without the burdens of cleft.

Through education and training initiatives, we work with cleft care providers around the world to help develop sustainable capacity for comprehensive cleft care.



Angel, 1 year follow-up



Sham, 3 year follow-up



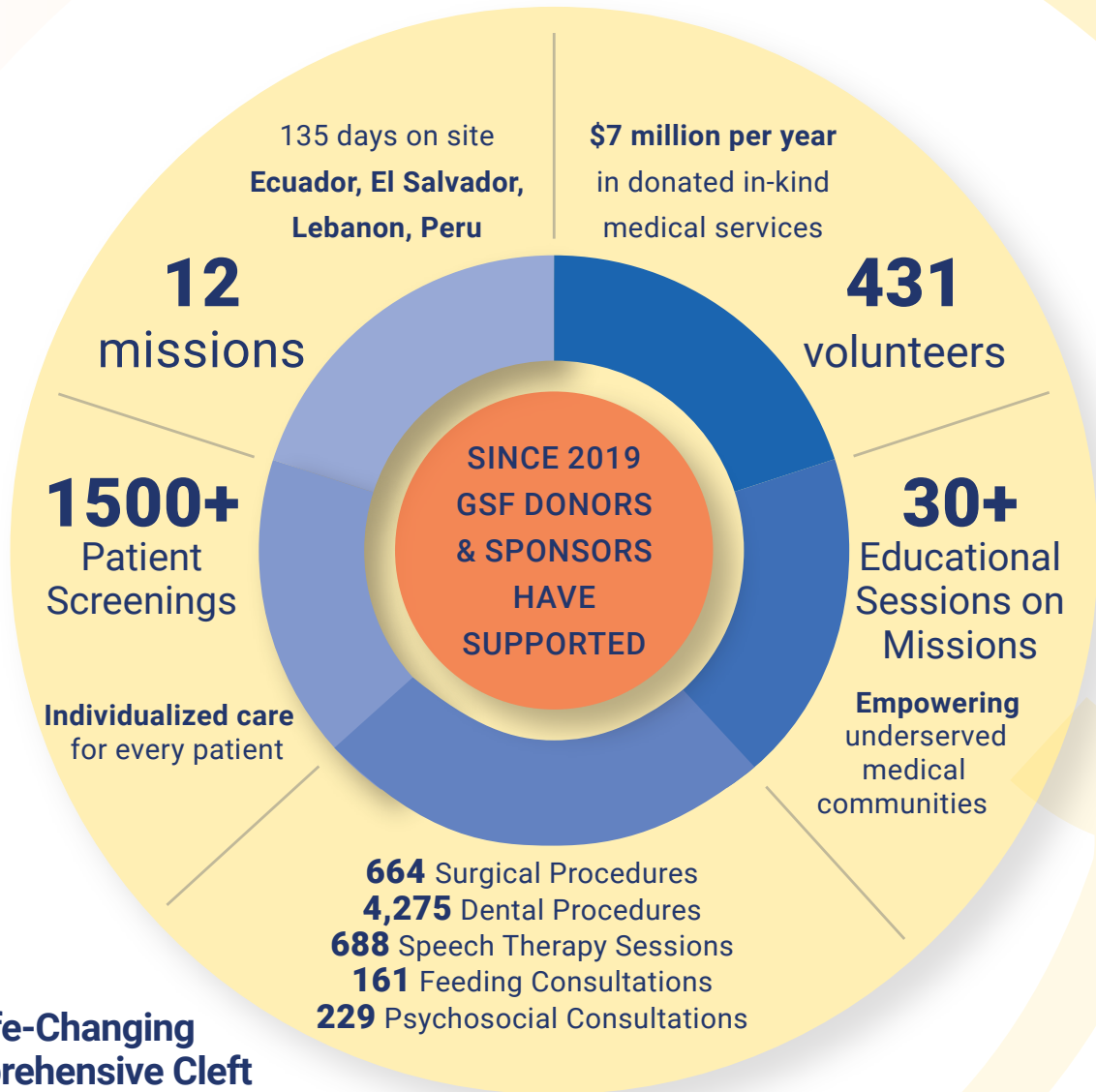
Abdiel, 2 year follow-up



Nashly, 1 year follow-up

GLOBAL REACH, INDIVIDUAL IMPACT

GSF turns donations into action on the ground during **annual missions**, at our year-round **Cleft Care Centers**, and through our **educational programs**. Since the emergence of the COVID-19 pandemic, GSF has conducted 6 missions and 2 international educational workshops.



**Life-Changing
Comprehensive Cleft
Care for Our Patients**



GSF IMPACT

GSF has a global impact that spans **4 continents**. The foundation is based in Massachusetts and has established two centers of operation in **Ecuador** and **Lebanon**.

The GSF volunteer base is **diverse**, with team members based in 18 countries. GSF has developed alliances with **major teaching institutions in the US and internationally**.

GSF knows that **healthy smiles make healthy lives possible**. Our article "*Clinical and Economic Impact of The Global Smile Surgical Program*" which was published in the *Journal of Craniofacial Surgery* and showed that the primary cleft lip and palate repairs performed by GSF teams from 2008-2018 resulted in:

🌐 Averting 13,000 years of disability for our patients

GSF has saved lives and improved the quality of life our patients and their families

🌐 Adding an economic gain of \$43,000-\$82,000 per patient

GSF has strengthened the financial health of our patients, their families, and their communities

7
Missions
per year

Average cost of
\$70,000-120,000
per mission

GSF is able to
treat approximately
1,510 patients
in a year

In 2019 alone, and before the start of COVID pandemic, our teams were able to provide surgical corrective procedures for 317 patients, 202 of whom were with primary cleft lip and /or palate.

Considering the above estimation of **economic gain per patient** and 202 patients who underwent primary cleft lip and palate repairs in 2019, our **Annual Clinical Return on Investment (ROI) is approximately 1,117%**. These figures do not take into account other surgical or clinical services that GSF provides, nor do they include the impact of our educational, research, and other non-clinical initiatives.

From 2019-2021, GSF published 10 articles in peer-reviewed medical journals. Sharing knowledge through research and publication is part of GSF's effort to advance the level of cleft care provided globally.



PROGRAM SUPPORT

GSF's supporters are volunteers, individuals, private foundations, and corporations who give *financial contributions, in-kind donations, and donated medical services.*

GSF carries a **low level of debt** and maintains a liabilities to assets ratio of 1.6%, reflecting limited reliance on debt to finance operations. In addition, GSF has a notably high level of internal operating efficacy, with a ratio of administrative cost to total cost of 0.6%, further emphasizing the **mission-driven nature of expenses.** GSF is able to direct the vast majority of funds to program expenses rather than to administrative costs.

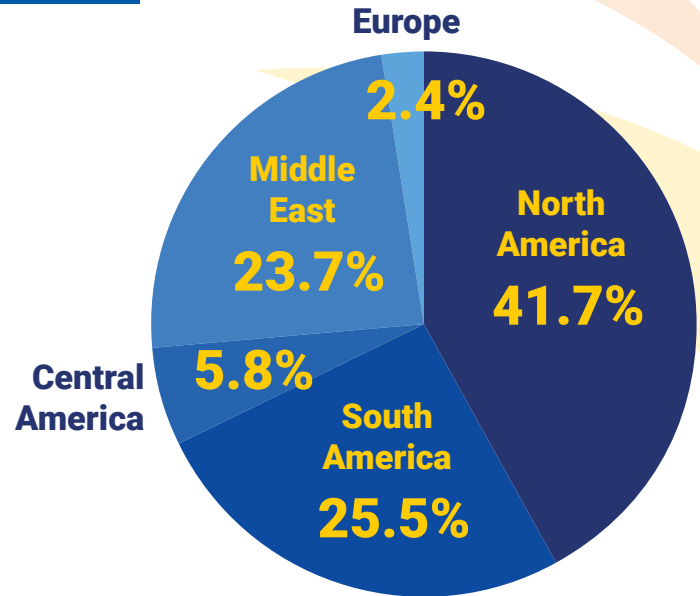


RESPONDING TO THE COVID-19 PANDEMIC

When the COVID-19 pandemic first emerged, GSF was able to pivot quickly to telehealth for patient care and transition the 2020 annual workshop to a virtual event.

By the end of the year, GSF was one of the first NGOs to resume outreach cleft care programs and developed increased safety precautions to protect volunteers, patients, and their families from infection.

To date, GSF has shared this knowledge and experience in **3 articles published in peer-reviewed medical journals.**



GSF volunteers' global diversity

93%
of every dollar raised goes to cover costs for our outreach programs and **only 7%** for overhead.



GLOBAL ACCESS TO CLEFT CARE

As part of our mission to improve global access to cleft care, GSF hosted the **4th International Comprehensive Cleft Care Workshop (CCCW)** in October 2021. Held as a hybrid event due to the COVID-19 pandemic, the workshop drew more than **489 attendees** from **68 countries** for sessions delivered by **62 world-renowned experts** in the cleft and craniofacial fields. The workshop was co-hosted by **GSF and Smile Train**. Workshop attendees can immediately begin to integrate their learning into practice.



IMPACT OF CCCW ON PATIENT CARE IS FAR-REACHING

INDIVIDUAL IMPACT

1 CCCW attendee
x 200 patients/year
x 20 years

4,000 patients

COLLECTIVE WORKSHOP IMPACT

489 CCCW
registered attendees
x 4000 patients

1,956,000 patients

The **5th International CCCW** will be held in **Rio de Janeiro, Brazil**.

More information is available at:

www.cleftworkshop.org



HEALTHY SMILES SAVE LIVES



Mathias's healthy smile shows why providing comprehensive cleft care to underserved communities is so critical. Not only was Mathias born 8 weeks prematurely, but he also had a severe type of cleft lip and palate that required a complex surgery. To make matters worse, Mathias and his family had to flee their home in Venezuela due to violence and were living in a vulnerable situation in Ecuador.

When our volunteers evaluated him, they were concerned about his low weight.

Mathias could not undergo surgery until he was at a healthy weight, but more concerning was the fact that his health was suffering. Like many infants with cleft, he could not feed properly and

also needed **special formula** that his mother could not afford.

Our **Speech Team** showed Mathias's mother **how to feed him with a special bottle** and worked with **Fundación Global Smile-Ecuador** to raise money to purchase the infant formula. **One of GSF's board members** was so moved by Mathias's story that he **donated** enough to put the campaign over its goal.

Six months later, Mathias had gained enough weight to undergo cleft lip surgery. GSF and GSF-Ecuador teams provided care for Mathias during COVID-19 via Telehealth to monitor his growth. Mathias and his mother came back in **September 2021** for his cleft palate repair.

We are happy to report that he is thriving!

Global Smile Foundation

106 Access Road, Suite 209,
Norwood, MA 02062
P: +1 (781) 501-5007
E: info@gsmile.org

Visit
www.gsmile.org/donate
and learn how you can make
healthy smiles possible!