



OUR CASE FOR SUPPORT

HELP US TRANSFORM
LIVES THROUGH
EDUCATION.

A.C.E.I.
ASOCIACION CIVIL
EDUCACION INTERNACIONAL



ASOCIACION CIVIL EDUCACION INTERNACIONAL (ACEI)

We provide access to
affordable secondary
education to students in
Solola, Guatemala.





OUR FLAGSHIP SCHOOL PANAJACHEL COLEGIO INTERNACIONAL (PCI)

WE PROVIDE BILINGUAL EDUCATION.

We designed a bilingual core curriculum, with classes in English and Spanish. All of our students will graduate proficient in both of these languages, allowing them to apply to international schools and have access to higher-paying jobs.

OUR STUDENTS LEARN AND DEVELOP IN A DIVERSE ENVIRONMENT.

Our student body is comprised of international, regional and indigenous students. They learn from different perspectives and develop awareness and empathy for issues dealing with race and culture. Diversity helps students recognize and appreciate the unique qualities of each individual.

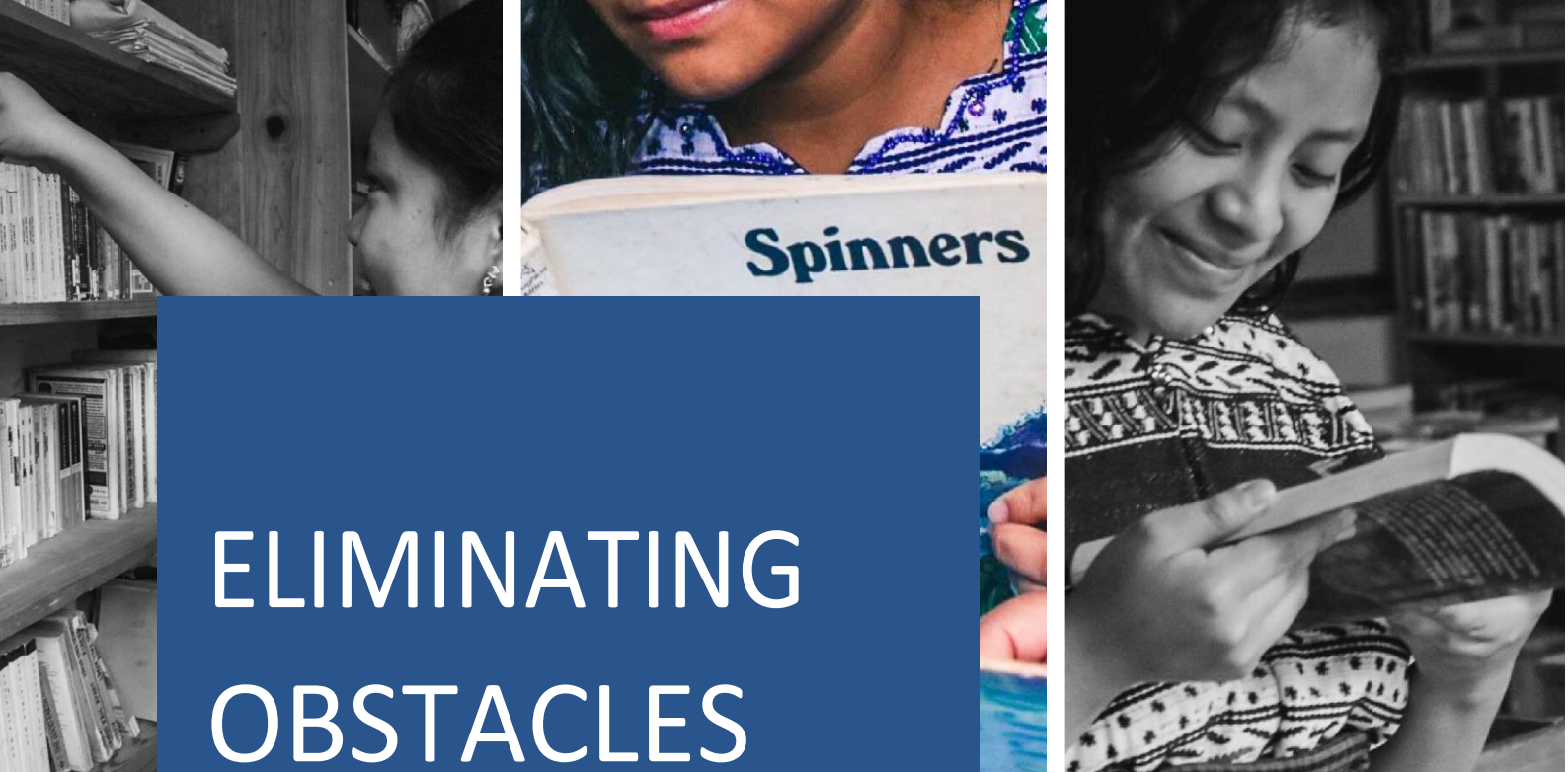


WE BELIEVE IN THE IMPORTANCE OF CULTURAL AWARENESS.

Our junior and senior students take Kaqchiquel and K'iche' lessons, two of the most spoken Maya languages in the region. For many of our students, learning these languages is part of their heritage. For the rest of them, it encourages respectful collaboration with the community and leads to better cultural understanding.

QUALITY EDUCATION SHOULD NOT BE A PRIVILEGE.

Quality education in Guatemala has become a privilege for children whose families can afford to enroll them in private schools. We believe that we should serve all the families in our community, not just those with a high income. Every child has the right to an education and to pursue their dreams.



ELIMINATING OBSTACLES

Only 1 out of 4 children in Guatemala attend high school.

60% of the Government expenditure on education goes to **primary level** institutions. **Public middle schools and high schools only get 7% and 4%**, respectively, according to the Ministry of Education (2019).

Living in a **rural area** significantly reduces the chances of attending middle school and high school, since there are **not enough establishments** that teach these grades.

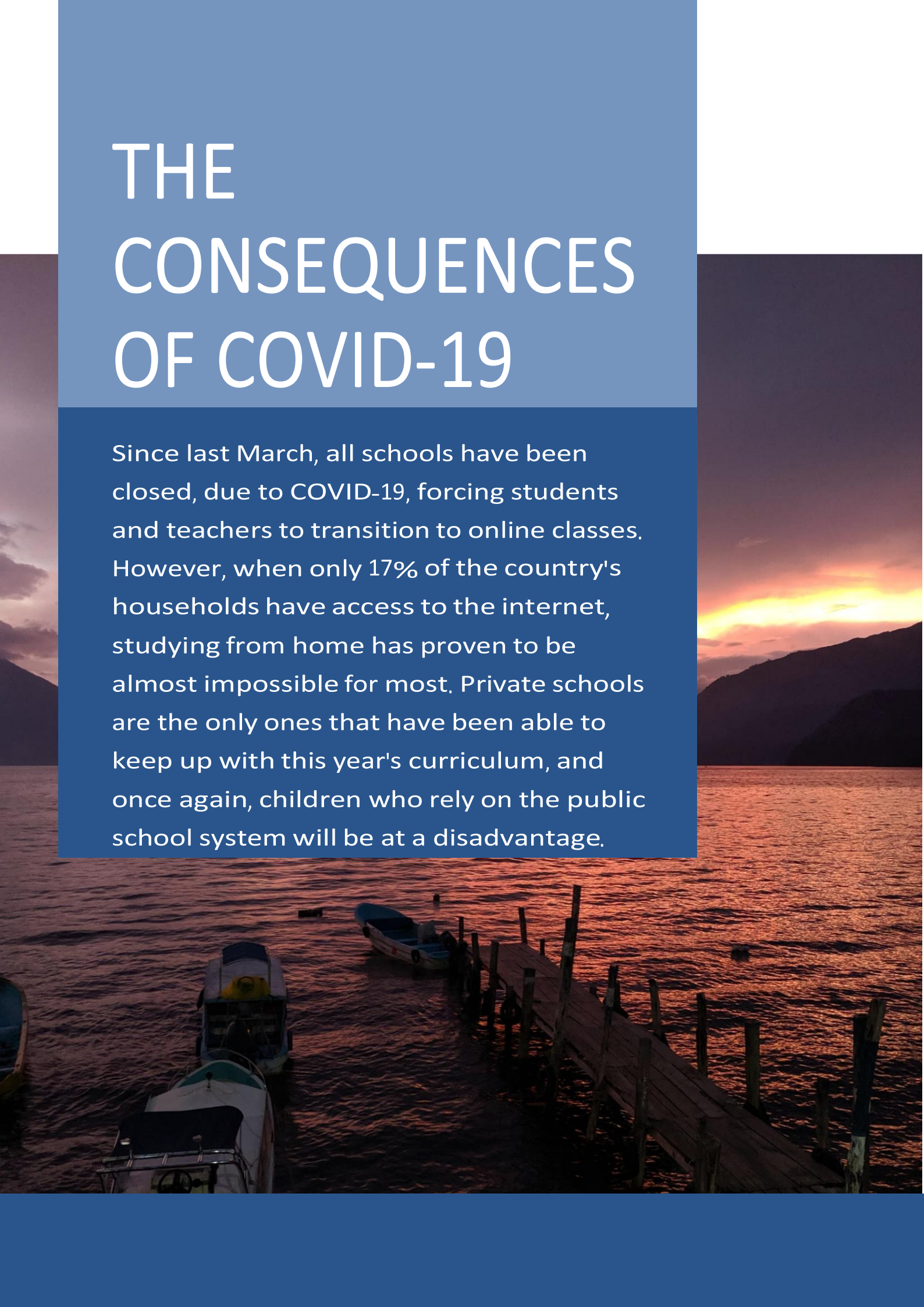
The **family's income and the parent's education level** heavily determine whether or not a child will have access to education.

Consequently, children from low-income families are less likely to go to school, perpetuating the **never-ending cycle of poverty**.

For most low-income families sending a child to school means **losing a source of income**, since they would no longer be able to send them to work.

THE CONSEQUENCES OF COVID-19

Since last March, all schools have been closed, due to COVID-19, forcing students and teachers to transition to online classes. However, when only 17% of the country's households have access to the internet, studying from home has proven to be almost impossible for most. Private schools are the only ones that have been able to keep up with this year's curriculum, and once again, children who rely on the public school system will be at a disadvantage.



WE PROVIDE ACCESS TO QUALITY,

LLY RELEVANT IN THE GUATEMALA

Since 2016 we have provided affordable, quality education to middle school and high school students in Solola, Guatemala. PCI employs highly experienced local Guatemalan and international teachers who believe in empowering students to achieve their highest potential.

We believe that the learning process is more important than the outcome, but we are pretty proud of the impact PCI has had on students and the community:

- PCI's students have the highest Math and Language scores in the region.
- 90% of our alumni pursue higher education, and most of them enroll in international universities all over the world.
- Our alumni believe in safeguarding our natural environment, supporting and raising the voices of marginalized communities, and bringing together a culturally diverse population for the common good and prosperity of the Lake Atitlan region and the department of Solola.

70% OF THE STUDENTS WHO ATTEND PCI HAVE A FINANCIAL SCHOLARSHIP, THIS YEAR, DUE TO COVID-19, THE NUMBER WILL GO UP TO 80%. THESE HIGH-ACHIEVING STUDENTS COME FROM LOW-INCOME FAMILIES THAT LIVE IN THE COMMUNITIES SURROUNDING LAKE ATITLAN, AND PCI IS OFTEN THEIR ONLY CHANCE TO CONTINUE THEIR EDUCATION AND GET THEIR HIGH SCHOOL DIPLOMA.

BECOME A SPONSOR

We are looking for Sponsors to finance students' scholarships. You can make a big difference in the lives of these students through our Sponsorship Program.

By becoming a Sponsor, you can help one of our Scholarship Students study middle school and high school at PCI. They will receive quality, bilingual education, without the financial burden that it would be to their parents otherwise.

All of our Sponsors will receive the profile of the student they are supporting and annual updates about their progress. They will also be able to exchange letters once a year.

HELP US CONTINUE
TRANSFORMING LIVES THROUGH
EDUCATION

We need your help to keep providing high-achieving students with scholarships for our flagship school PCI.

For the 2021-2022 school year, we will have 35 scholarship students.

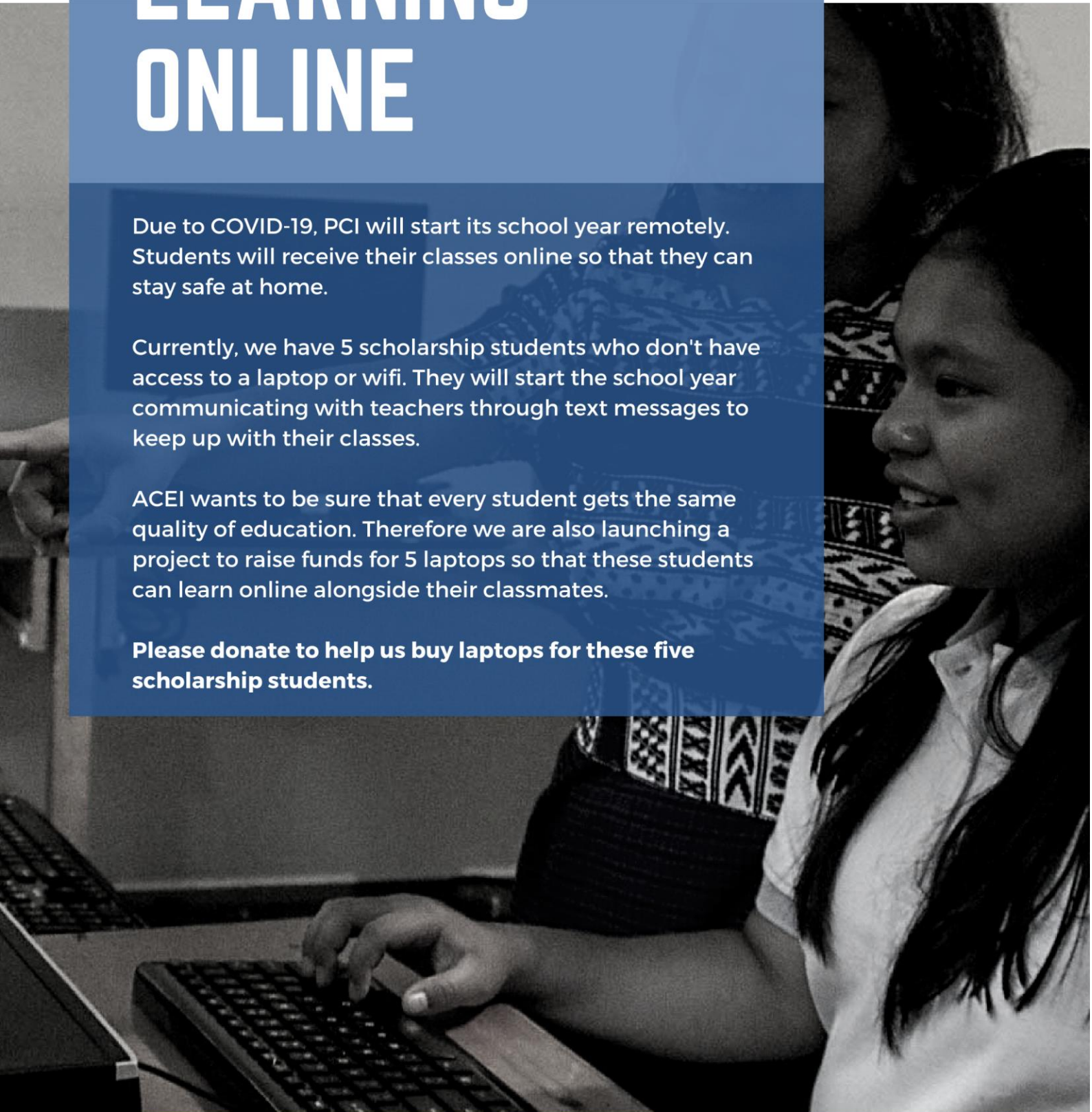
LEARNING ONLINE

Due to COVID-19, PCI will start its school year remotely. Students will receive their classes online so that they can stay safe at home.

Currently, we have 5 scholarship students who don't have access to a laptop or wifi. They will start the school year communicating with teachers through text messages to keep up with their classes.

ACEI wants to be sure that every student gets the same quality of education. Therefore we are also launching a project to raise funds for 5 laptops so that these students can learn online alongside their classmates.

Please donate to help us buy laptops for these five scholarship students.





HELP THEM
ACHIEVE THEIR
DREAMS

