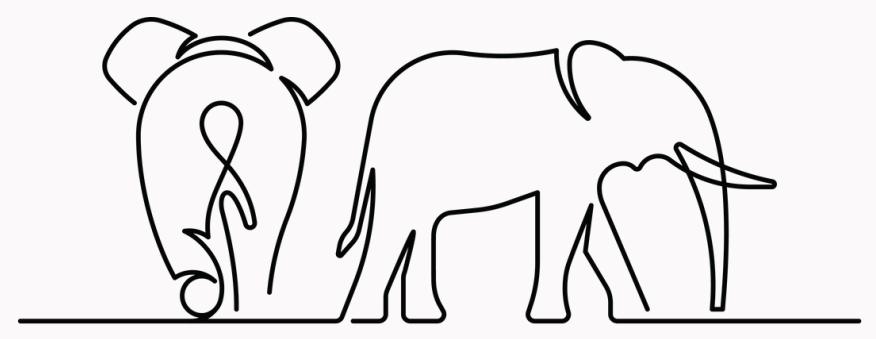
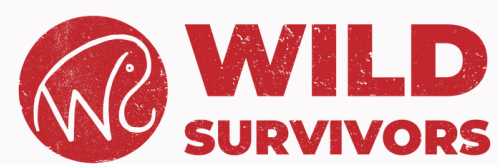


Introducing
**THE 'HOW MANY ELEPHANTS'
BEEHIVE FENCE**
Launching on World Bee Day - May 20 2025

In collaboration with:



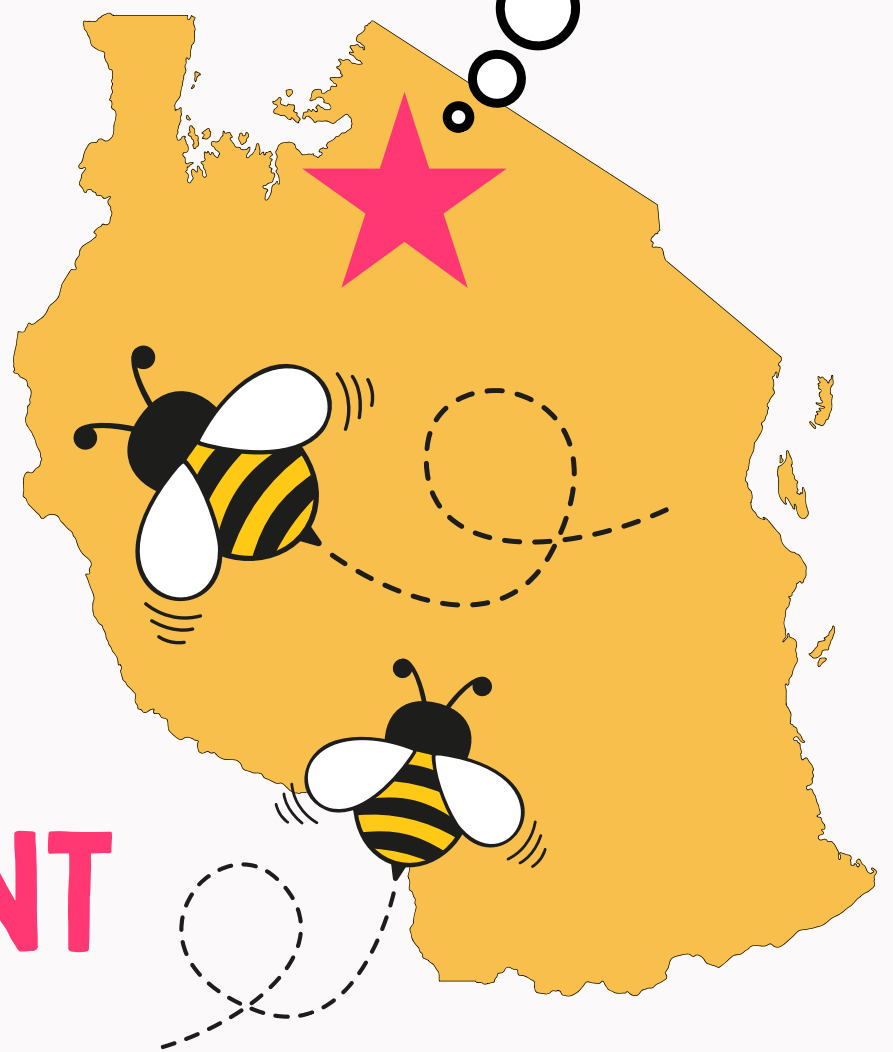
HOW.MANY.ELEPHANTS

www.howmanyelephants.org

THE 'HOW MANY ELEPHANTS' BEEHIVE FENCE

WE WILL INSTALL
50 BEEHIVES IN
TANZANIA'S
NGORONGORO
SERENGETI
ECOSYSTEM,
**TO PROMOTE
HUMAN-ELEPHANT
COEXISTENCE**

THAT'S A
NEW HOME TO
2 MILLION
BEES!



In collaboration with:

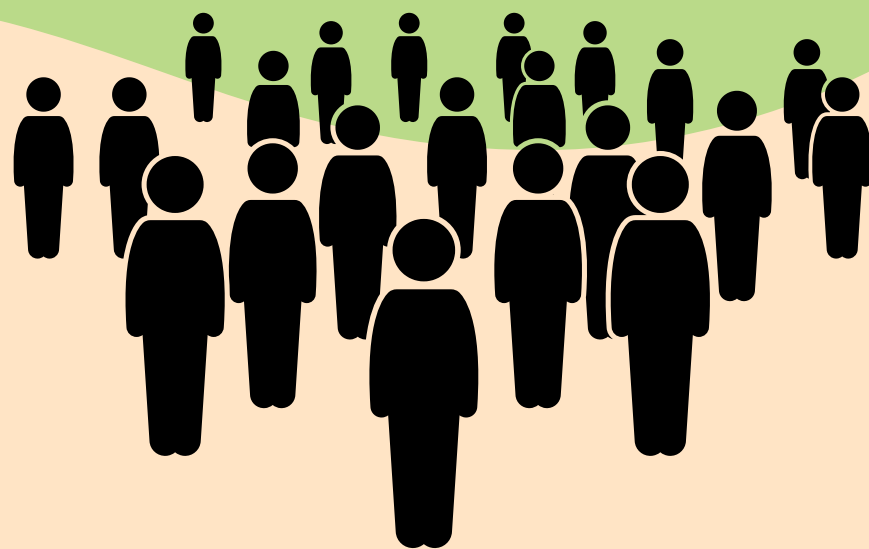
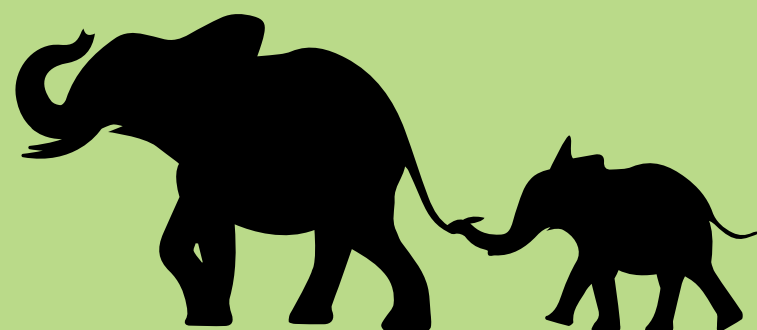
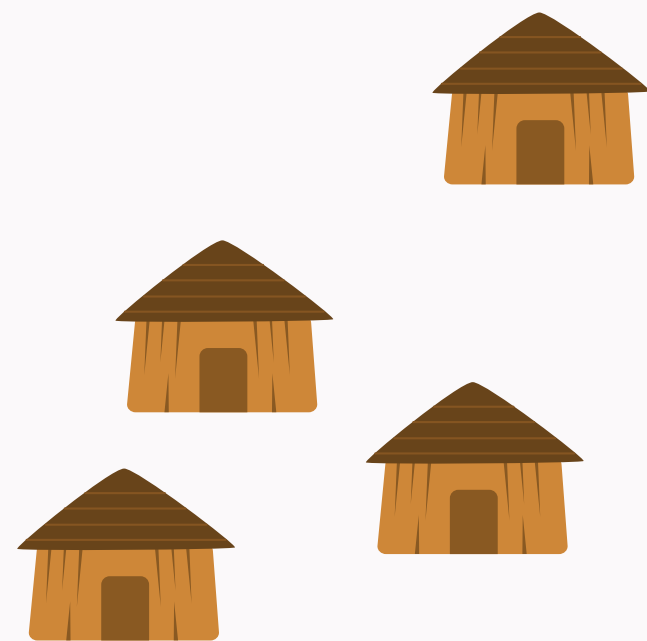


**WILD
SURVIVORS**



**WHY? HUMAN-
ELEPHANT
CONFLICT IS
ESCALATING
ACROSS AFRICA
AS HUMANS
EXPAND INTO
ELEPHANT
HABITATS.**

**THIS HAS BECOME A
SERIOUS ISSUE
RESULTING IN CROP
DESTRUCTION,
FINANCIAL LOSS FOR
FARMERS, OR CAN LEAD
TO RETALIATORY
KILLINGS OF ELEPHANTS.**

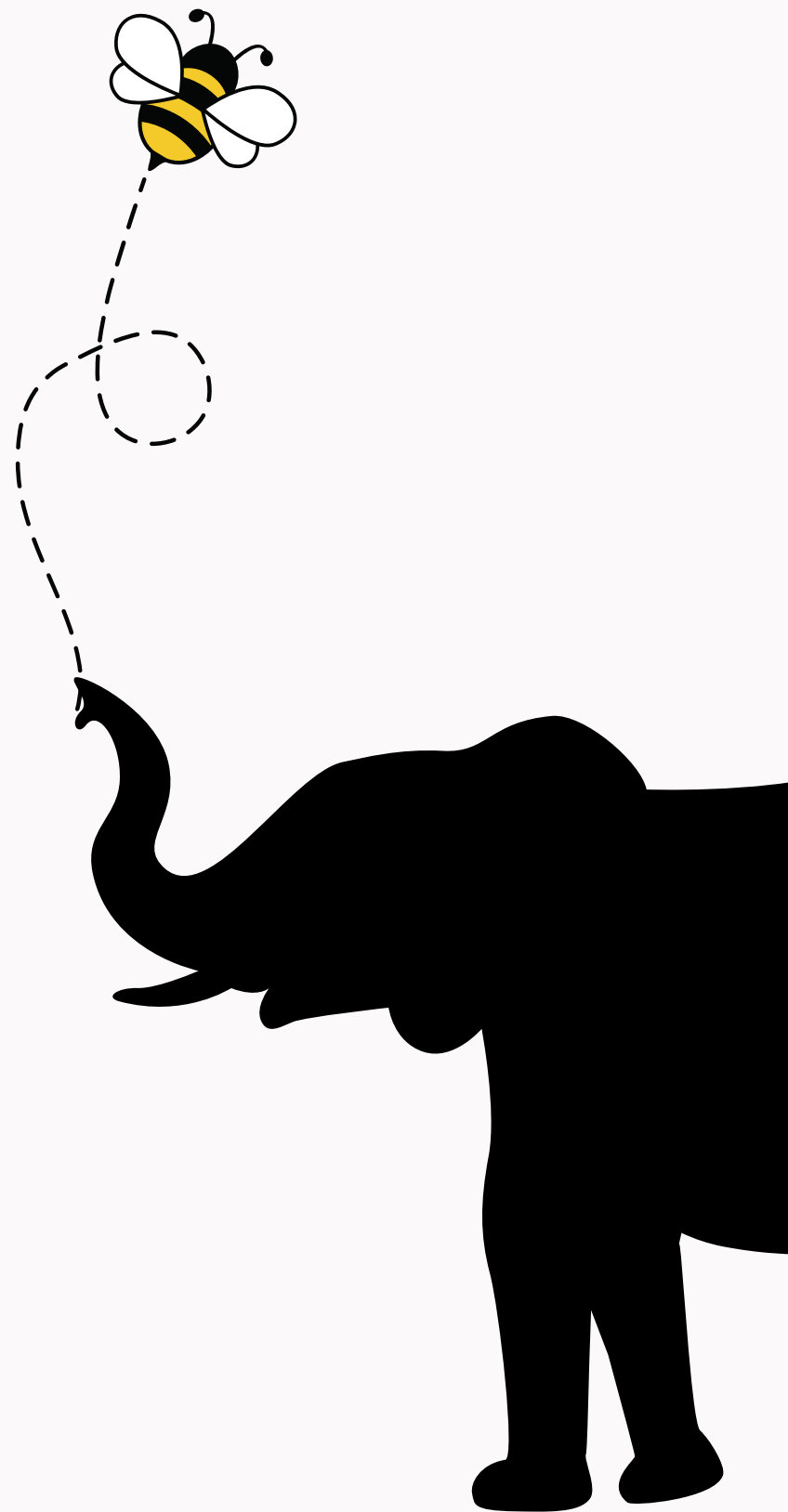


DID YOU KNOW?



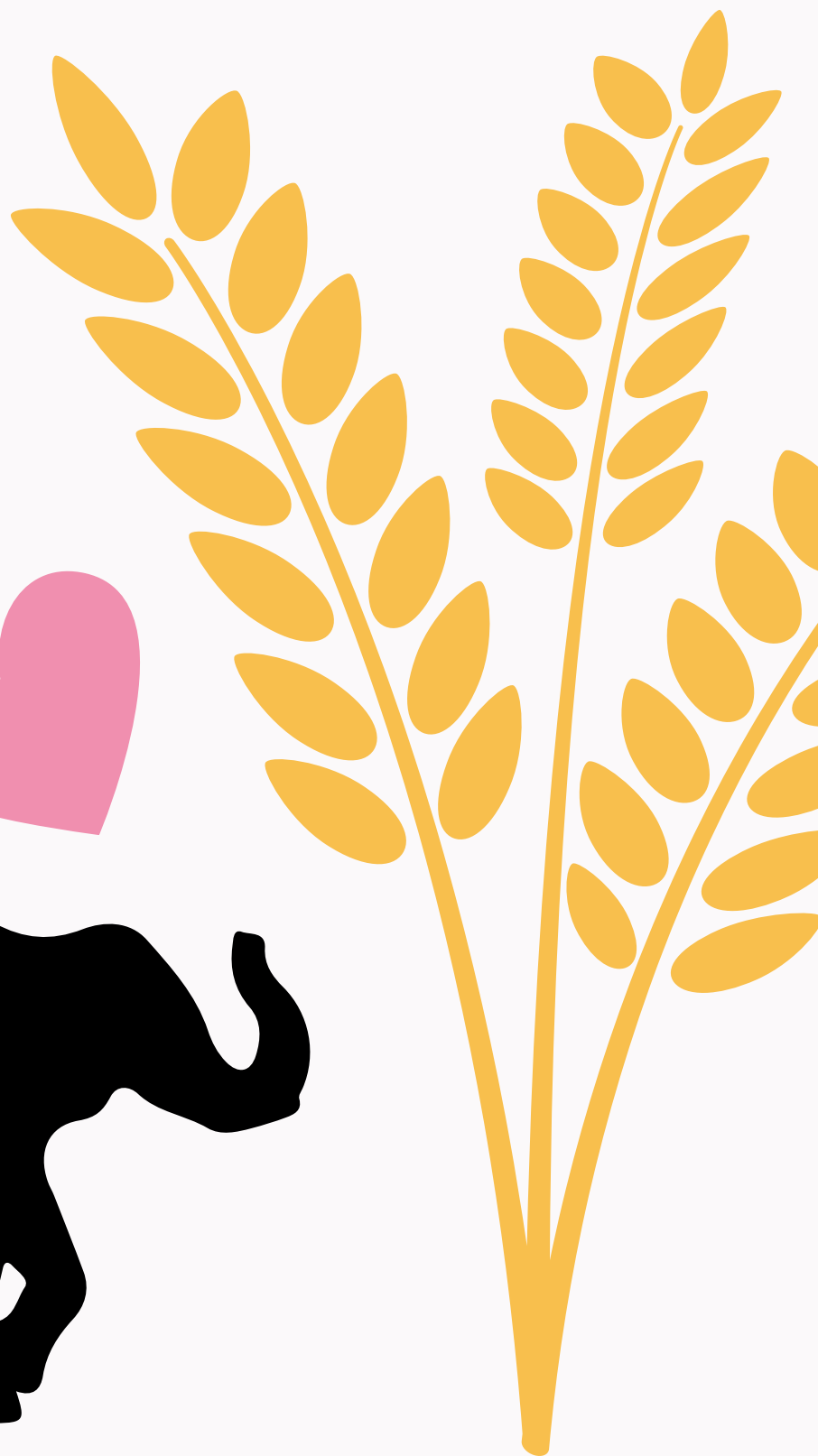
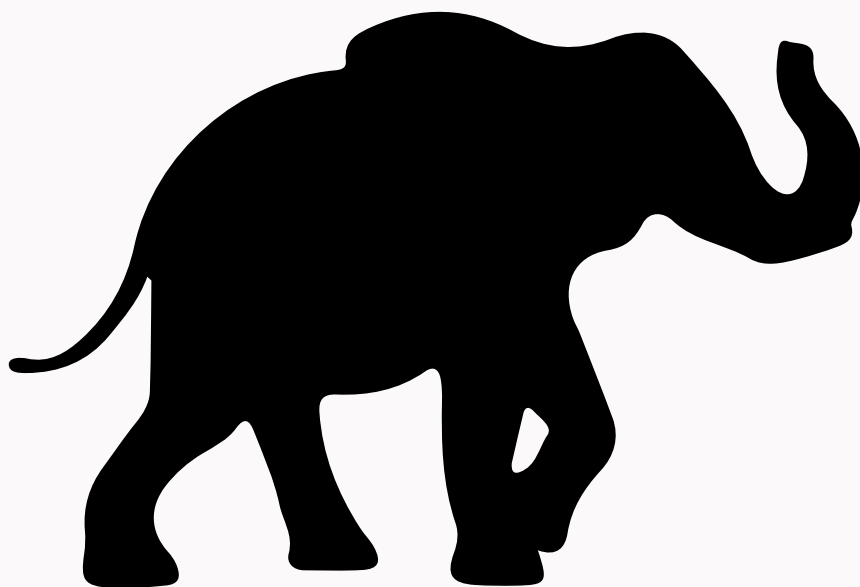
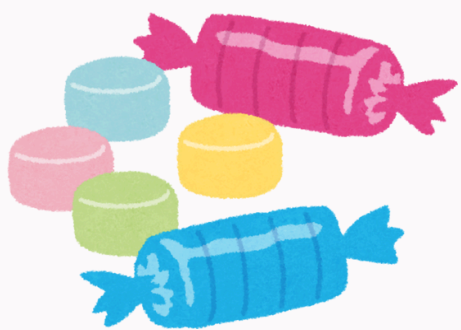
**ELEPHANTS ARE
SCARED OF
BEES!**

**THAT'S RIGHT,
THE LARGEST
LAND ANIMAL ON
EARTH IS AFRAID
OF ONE OF THE
SMALLEST!**

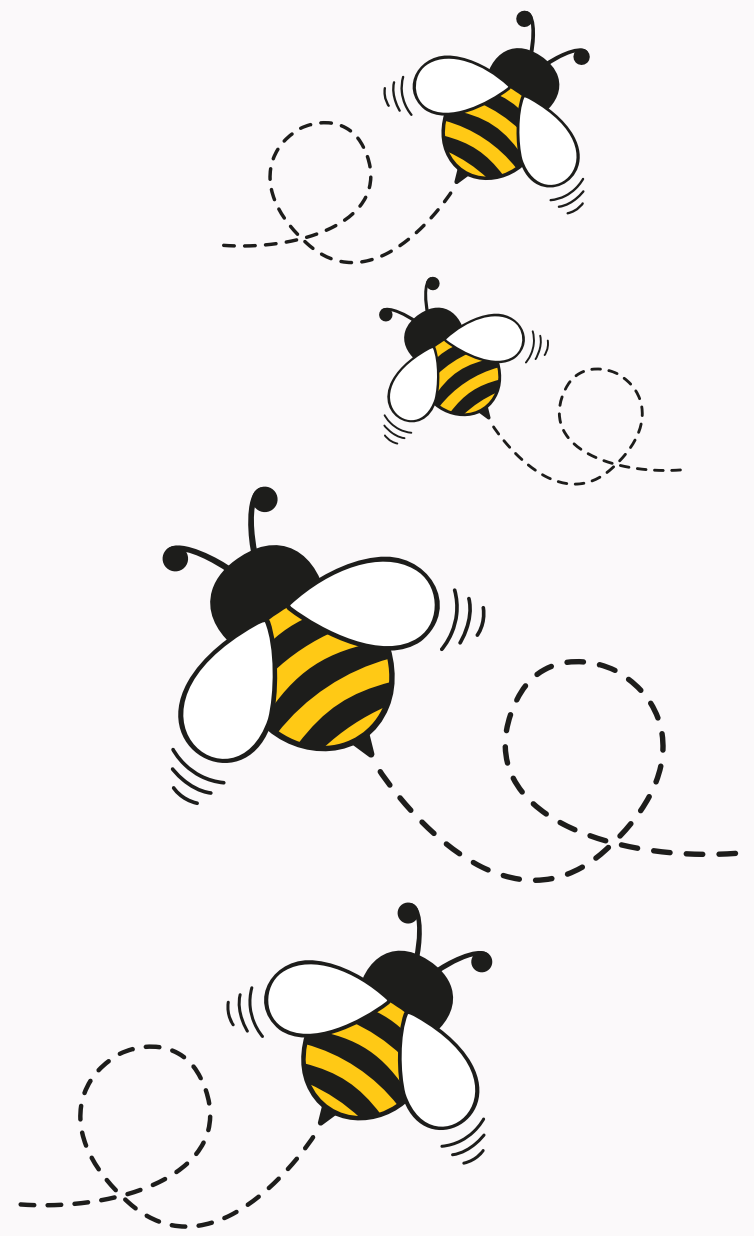


**AN INTERESTING
FACT!**

**FARMERS' CROPS
LIKE WHEAT,
MAIZE, AND
BARLEY ARE LIKE
NUTRITIOUS
CANDY FOR
ELEPHANTS!**



SO, IF AN ELEPHANT
TRIES TO CROSS A
BEEHIVE FENCE TO
GET TO THE CROPS,
IT **DISTURBS**
>40,000 BEES PER
HIVE, FORCING THE
ELEPHANT TO
RETREAT.



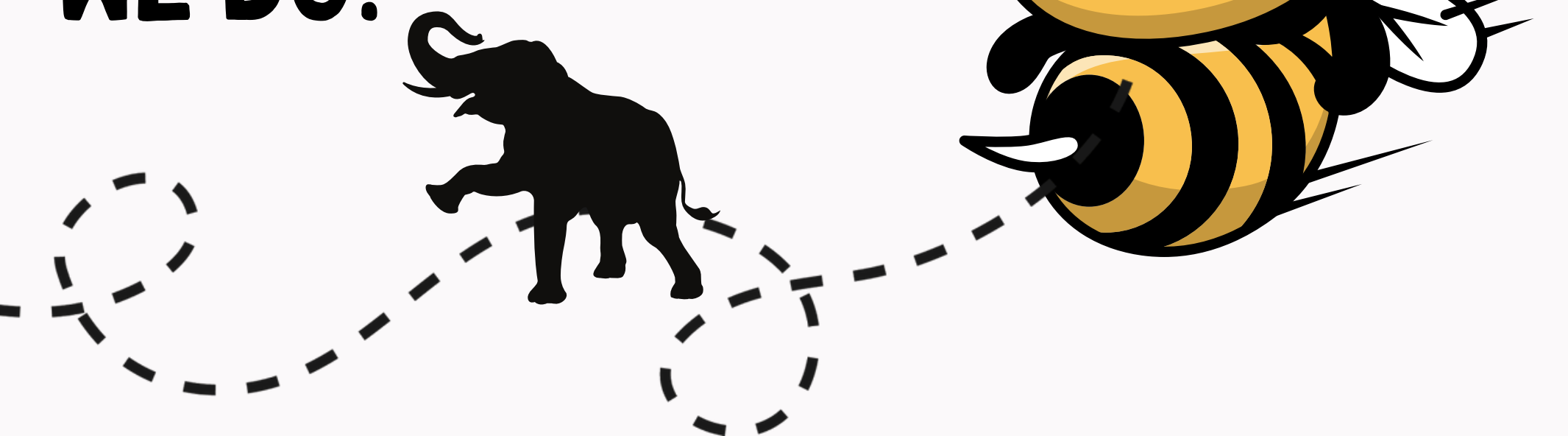
**AND, ANOTHER
INTERESTING
FACT!**



**THE EAST
AFRICAN HONEY
BEE IS SMALL BUT
MIGHTY.**



**ELEPHANTS FEEL
BEE STINGS LIKE
WE DO!**



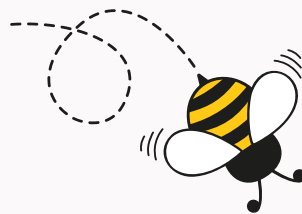
THROUGH THE WORK
OF



WILD
SURVIVORS

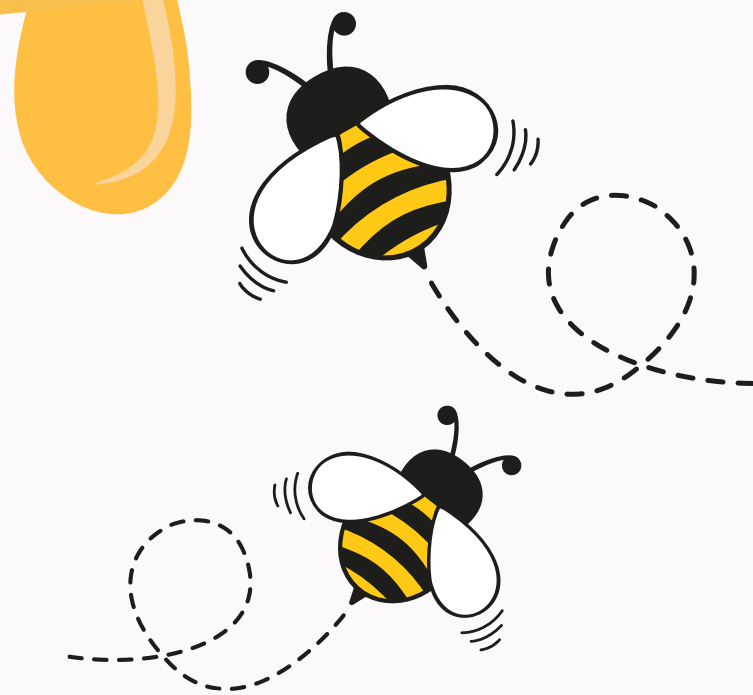
AND THEIR BEEHIVE
FENCES, **CROP-**
RAIDING INCIDENTS
HAVE DROPPED BY
A WHOPPING 90%

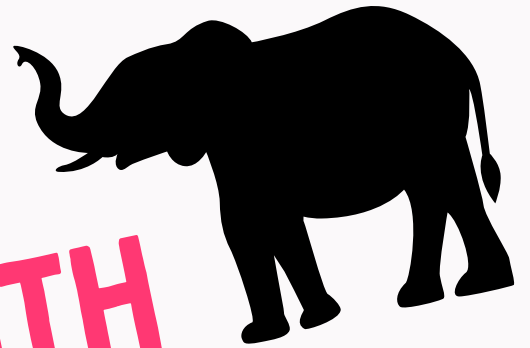
AND WE
POLLINATE
THE FARMERS
CROPS TOO!



THE 'HOW MANY ELEPHANTS' BEEHIVE FENCE

**AND ANOTHER
WIN - LOCAL
WOMEN
PROCESS THE
HONEY AND
SELL IT TO THE
SAFARI LODGES**

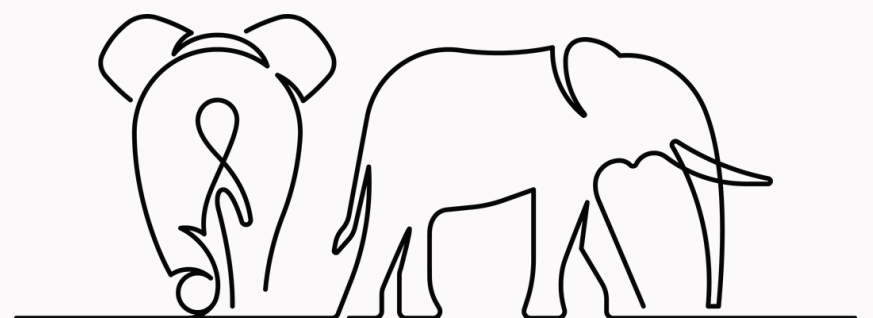




TO GET INVOLVED WITH THE 'HOW MANY ELEPHANTS' BEEHIVE FENCE

- LIKE THIS POST
- SPREAD THE WORD
- MAKE A DONATION

In collaboration with:



HOW.MANY.ELEPHANTS

www.howmanyelephants.org