

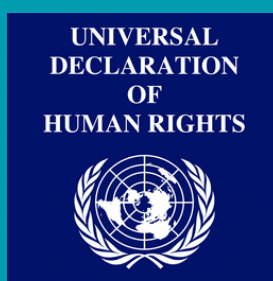


Graduate Women International (GWI)

INTERNATIONAL DAY OF EDUCATION

24 JANUARY 2025

HISTORICAL TIMELINE OF THE RIGHT TO EDUCATION



1948 UNIVERSAL DECLARATION OF HUMAN RIGHTS

enshrines the right to education, calling for free, compulsory elementary education for all.



1980 CONVENTION ON THE RIGHTS OF THE CHILD emphasizes accessibility to higher education for all.



2015 SUSTAINABLE DEVELOPMENT GOALS (SDG)



recognize education as vital for achieving all 17 SDGs, with SDG 4 aiming to ensure inclusive, equitable quality education for all by 2030.



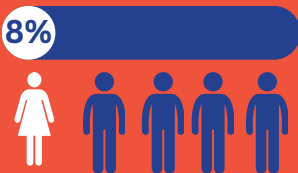
2018 INTERNATIONAL DAY OF EDUCATION established by the United Nations (UN), highlighting the role of education in peace and development.



FAST FACTS



250 million children and youth are out of school, and **763 million** adults are illiterate.

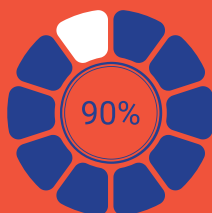


Every year of secondary school the number of girls enrolled compared to boys decreases by **8%**.

(Source: United Nations)

90% of future jobs will require digital skills, yet girls are disproportionately excluded. Bridging the digital divide for women and girls is key to achieving SDG 4 and empowering them to thrive in the global economy.

(Source: UNESCO)



Through its international advocacy, policy recommendations, projects and initiatives, GWI actively drives **progress toward SDG 4**, recognizing quality education not only a fundamental human right but also the cornerstone for achieving all other SDGs.



[Click here to discover GWI actions towards education.](#)

GRADUATE WOMEN INTERNATIONAL (GWI)

GWI is a membership-based international nongovernmental organisation located in Geneva, Switzerland, with presence in some 60 countries with our National Federations and Associations (NFAs) and independent members. Founded in 1919, GWI is the leading girls' and women's global organisation comprised of graduate women advocating for women's rights, equality and empowerment through access to quality education and training up to the highest levels. GWI is in special consultative status with the UN Economic and Social Council (ECOSOC) since 1947 and maintains official relations with the UN Educational, Scientific and Cultural Organisation (UNESCO) as well as International Labour Organisation (ILO).



Graduate Women International (GWI)

INTERNATIONAL DAY OF EDUCATION

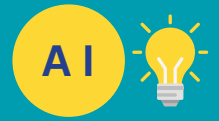
24 JANUARY 2025

THIS YEAR'S THEME: "AI AND EDUCATION: PRESERVING HUMAN AGENCY IN A WORLD OF AUTOMATION"

This year's theme reflects on the **power of education** to equip individuals and communities to navigate, understand and influence **technological advancement**.



As computer and AI systems become more advanced, the boundaries between human intention and machine-driven action often blur. Explore our **advocacy idea** on reinforcing human control in an age of technological acceleration in the next section.

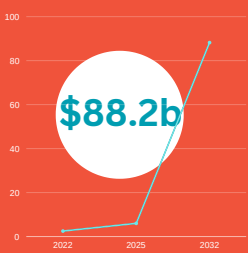


Advocacy Ideas

FAST FACTS

66%

According to recent surveys, in high-income countries, over two thirds of secondary school students are using generative AI tools to "automate" the completion of academic assignments. *(Source: UNESCO)*



The global AI in education market was valued at **\$2.5b** in 2022, this figure is expected to reach **\$6b** by 2025, and **\$88.2bn** by 2032. *(Source: AIPRM)*

As AI reshapes education, it is critical to develop systems designed and implemented to avoid bias, particularly bias against women and girls, ensuring fairness and equity across diverse contexts.



Advocacy Ideas

Explore our **advocacy idea** on bridging the educational gap through digital learning in the next section.

GWI addresses systemic barriers faced by women and girls worldwide by providing actionable recommendations on education and gender equality. At its 34th Triennial General Assembly, GWI adopted **Resolution 1**, demanding increased domestic funding for education, ensuring equal and safe access to digital learning.

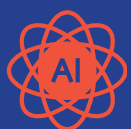
[Click here for GWI policy resolutions.](#)

EMERGING TRENDS IN ONLINE EDUCATION



Since the COVID-19 pandemic, online education has skyrocketed, significantly increasing enrollments among women. This shift has proven that digital platforms **engage** and **empower** women: they enhance their access to learning and career opportunities and boost retention rates for women and girls in both school and the workplace.

Despite these benefits, the rise of AI in education presents **challenges**. AI systems are not created in a vacuum: they reflect norms and biases of society, and in a world where inequality persists, they risk mirroring and amplifying these imbalances instead of breaking them down.



44%

Approximately **44%** of AI systems exhibit gender bias. *(Source: United Nations)*

If designed with bias, AI can perpetuate and even amplify existing gender stereotypes. Explore our **advocacy idea** on promoting unbiased AI implementation to ensure technology drives equality, not discrimination.



Advocacy Ideas

GWI drives **women's advancement in education** beyond the humanities and social sciences, supporting their pursuit of studies and careers in science, technology, engineering, and mathematics (STEM). Through various grassroots initiatives led by its National Federations and Associations (NFAs), GWI actively increases women's participation and leadership in science.

[Click here to read about the NFA initiatives.](#)



Graduate Women International (GWI)

INTERNATIONAL DAY OF EDUCATION

24 JANUARY 2025

GWI'S PROJECT IN EL SALVADOR: "ARTIFICIAL INTELLIGENCE TO BOOST YOUR PROFESSIONAL CAREER"

In El Salvador, training in AI is heavily restricted and dominated by men, leaving women – especially those from economically disadvantaged backgrounds – at a stark disadvantage. They face compounded barriers, including limited exposure to STEM fields and the pervasive undervaluing of **digital literacy**.

64%



64% of Salvadoran women believe technology is beyond their reach, compared to **64% of Salvadoran men**, who view technology as inclusive and accessible to everyone.

(Source: GWI)

The **Association of University Women of El Salvador**, has launched the initiative "Artificial Intelligence to Boost your Professional Career" to overcome this inequality by training Salvadoran women in the use of AI. By equipping women with AI skills, the project's goal is to empower women, enhance their competitiveness in the workforce, challenge stereotypes, and bridge the gap with men.



The **Bina Roy Partners in Development (BRPID)** program supports locally developed and operated projects initiated by GWI's NFAs, aimed at empowering women and girls through education and leadership development. The 2024/2025 BRPID project cycle features initiatives in Uganda, El Salvador, Nepal, Turkey, Senegal, and Egypt.



[Click here to learn about other projects.](#)

ADVOCACY IDEAS



Reimagine education in the AI era:

Embrace AI's potential to transform teaching, learning, and assessment, while equipping educators and learners with critical AI literacies.



Advocate for human-centered AI in education:

Ensure AI supports transparency, accountability, dignity, equality, and sustainability, complementing rather than replacing the human connection central to meaningful education.



Bridge educational gap:

Promote AI to reach underserved populations, especially women with limited access to education, amplifying their learning opportunities and providing essential technological knowledge.



Increase women's representation in AI:

Encourage women in STEM education, empowering them with the skills needed to pursue careers in AI and to develop technologies that genuinely address the unique needs of women and girls.



Promote unbiased AI implementation:

Advocate for AI systems in education that challenge biases, address systemic inequities, and actively advance gender equality, breaking down barriers for women and girls.



Raise Awareness about AI education:

Share this infographic to spread knowledge about AI's role in bridging educational gaps, empowering women, and promoting gender equality in learning.

GWI thanks Elena Bauchiero, GWI intern, for her valuable contribution to this infographic.

@GraduateWomenInternational

@gradwomen

@gradwomen

Graduate Women International

Join a GWI affiliate today at www.graduatewomen.org

© 2025 Graduate Women International



Graduate Women International (GWI)