



At Chico Housing Action Team (CHAT), we believe that everyone deserves a safe place to call home. Since our founding in 2013, we've helped hundreds of individuals and families experiencing homelessness in Butte County transition into permanent, stable housing—with compassion, dignity, and community support.

What began with one house and a handful of volunteers has grown into a dynamic network of deeply affordable housing, wraparound services, and advocacy for the most vulnerable members of our community.

By the Numbers... As of 2025, CHAT is proud to share the following impact:



185 individuals currently housed in CHAT-supported homes



20 individuals with serious mental health diagnoses served through our shelter



60+ properties providing low-barrier housing across Butte County



11+ years of grassroots housing advocacy and service



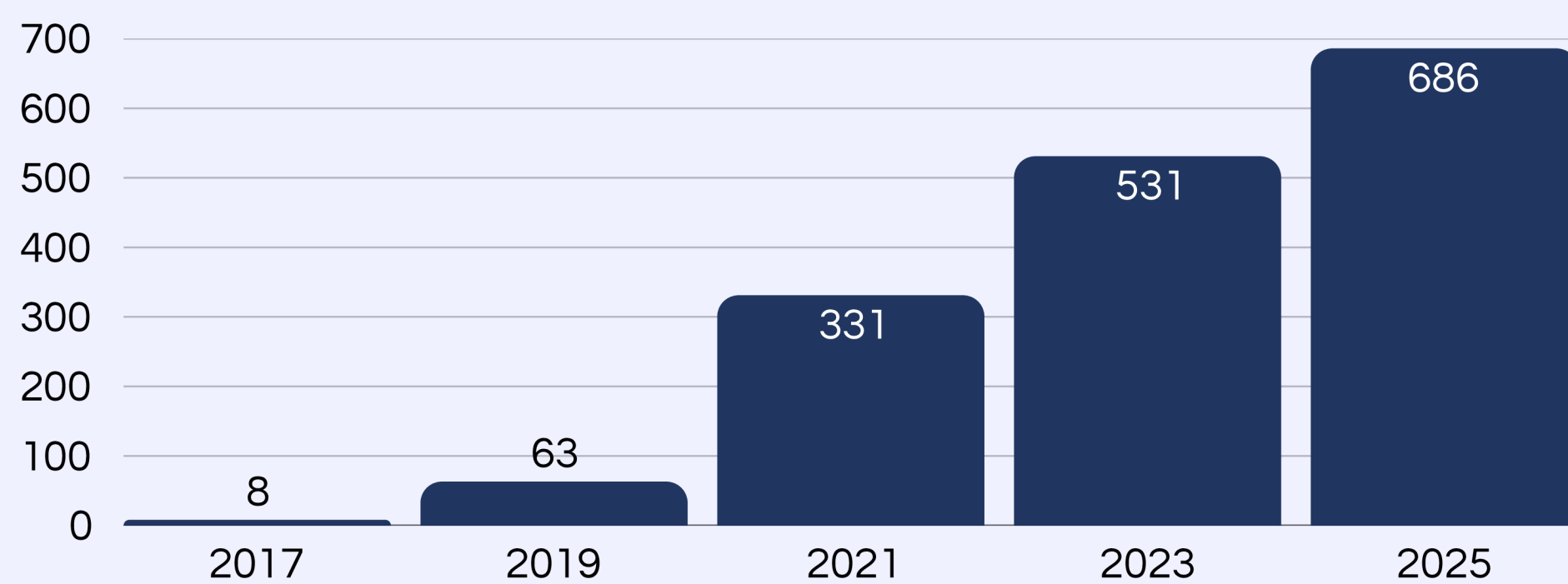
Dozens of community volunteers making the work possible



Hundreds connected to services including healthcare, case management, and benefits



Individuals housed by CHAT over the years



CHAT's model of affordable, service-linked housing has evolved to meet the changing needs of our community. Our programs serve a diverse range of people, including students, families with children, seniors, veterans, and individuals facing mental health and medical challenges.

We continue to evolve, with new developments and programs designed to offer lasting solutions.



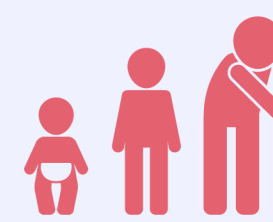
\$10,000- \$20,000 per year

Typical annual income range of individuals in CHAT housing - CHAT provides housing at a rate that is affordable for those on the lowest incomes.



71%

Percentage of CHAT clients living with chronic health issues, disability or mental health diagnoses - CHAT provides low barrier entry & social services to support independence in housing.



47%

Percentage of individuals in CHAT housing who are under 18 or over 54 years of age - CHAT works with vulnerable individuals and children across all age groups.

How Far We've Come



From humble beginnings to community leadership, CHAT's journey has been one of growth, grit, and heart:

From a volunteer-run group, passing the hat to rent our first shared home....

...Now a team of 35 dedicated staff

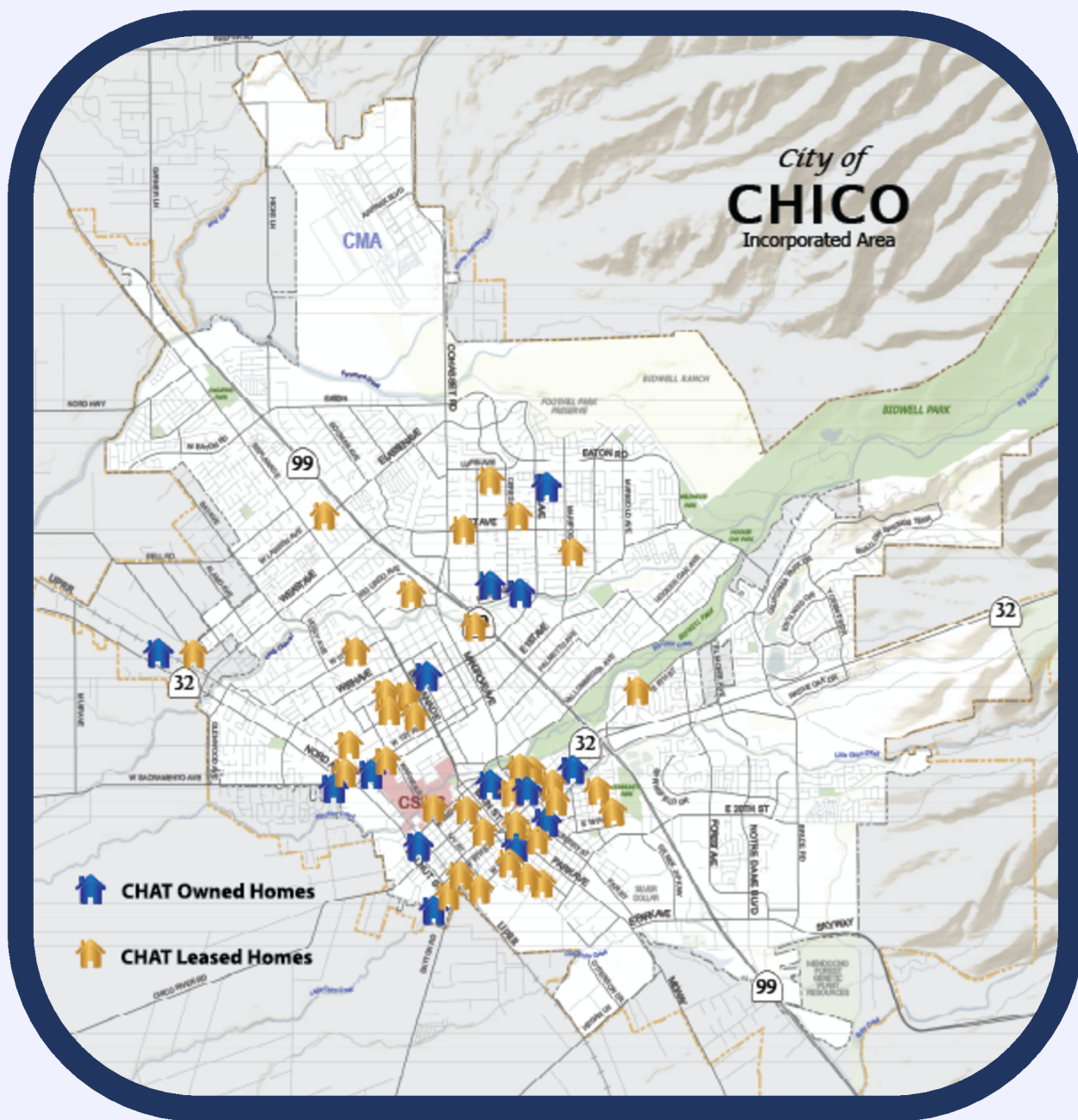
Owning 19 scattered-site housing units



Use of master leasing to quickly house individuals and families in need

Every unit is furnished with appliances, furniture, basic supplies

Clients receive wraparound social services, including help with benefits, food boxes, healthcare, and stability



CHAT homes in Chico, June 2025
Blue = owned, Gold = master leased

Named Nonprofit of the Year in 2023, recognizing our impact and commitment to the community



What's Next?

We're not stopping. In 2025, we are committed to these bold next steps:

- **House an additional 80 new individuals and children over the next 12 months**
- **Start construction on a new fully accessible 61-unit housing development**
- **Deepen partnerships to improve access to mental health care, employment support, and public benefits**



We believe in doing more—and doing it with equity, dignity, and community at the center.

Butte County at a Glance

(taken from the PIT count 2025*)

Butte County's unhoused population rose 8.8% to 1,392 individuals in 2025

Of those counted, 1,065 were in Chico

46% reported at least one disabling condition

40% of adults reported having a physical disability

Key Causes reported:

2024 wildfires (Park, Thompson, Apache)

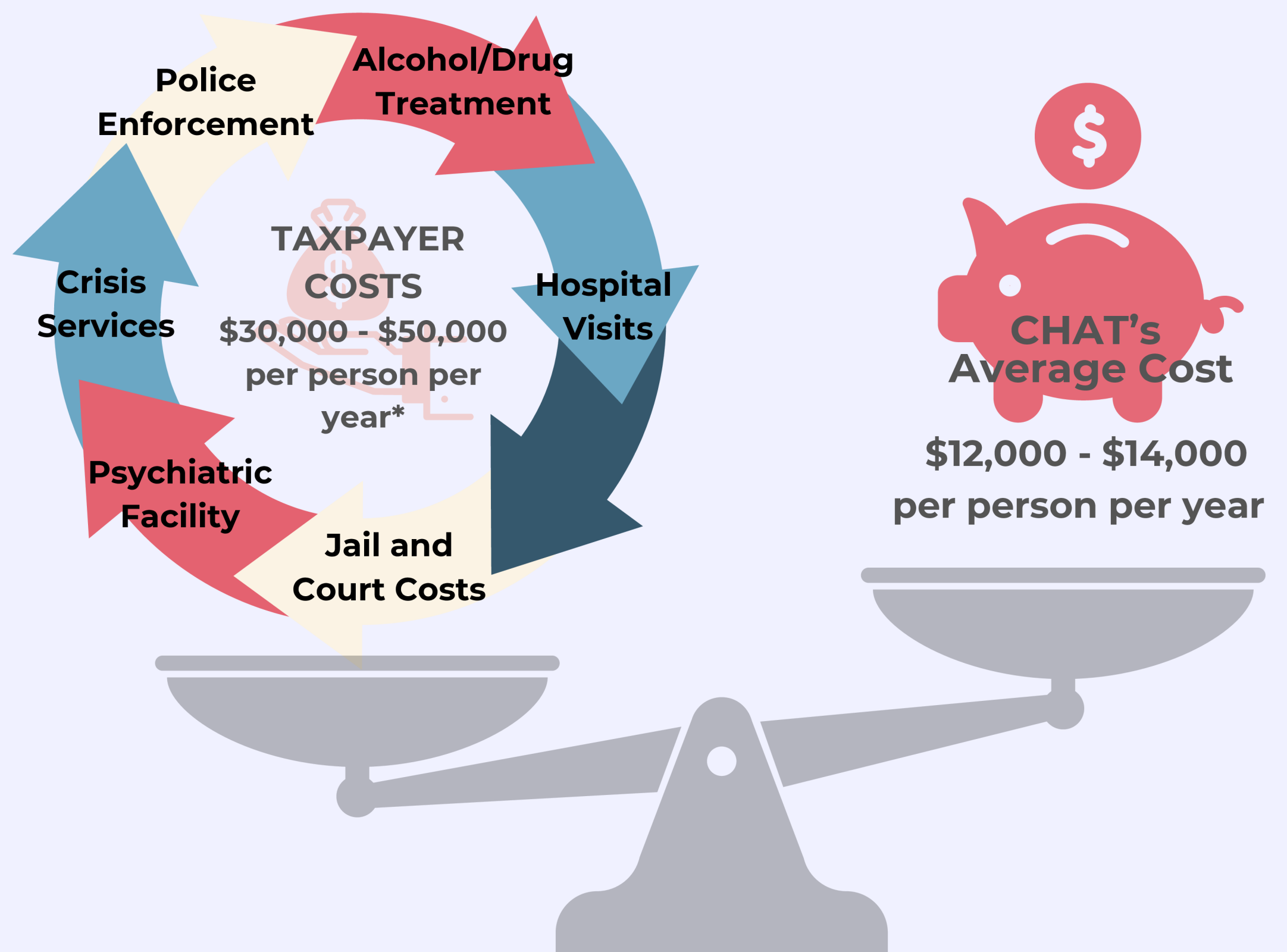
Depleted housing stock & overwhelmed resources.

Ongoing evictions

A severe affordable housing shortage

*The Point-In-Time (PIT) Count is an annual, countywide census that provides a snapshot of the number and characteristics of people experiencing homelessness on a single night.

Costs of Homelessness



*United States Interagency Council on Homelessness

https://www.usich.gov/resources/uploads/asset_library/Ending_Chronic_Homelessness_in_2017.pdf

Housing: the Most Cost-Effective Solution to Homelessness

What We Do

CHAT provides affordable housing to formerly homeless individuals

We coordinate with local community shelters to identify families and individuals in need of housing



We assess the needs of each person and work to match them with suitable affordable housing



For those individuals eligible for CHAT housing, their journey starts with a key...

We connect our residents with community volunteers to help regain vital social connections and build friendships



We connect residents to community resources and help residents work on securing income through employment or other supports



We also provide furniture, food and home maintenance



CHAT provides ongoing social services to ensure long term success in housing



“Big Impact, Small Footprint: Because Every Dollar Deserves to Do the Most Good.”

CHAT Sources of Funding FYE 2025

