



ANNUAL REPORT 2022

SEED is an **award-winning Non-Profit** (052-326 NPO) and Public Benefits Organization, headquartered in Mitchells Plain on the Cape Flats. Our organization is **dedicated to promoting the transformation and resilience of communities in South Africa.**

Guided by our vision of resilient and transformed South African communities, our mission is to **inspire and equip individuals to actively participate as citizens**, contributing to the development of these thriving communities.

Over the past two decades, **SEED has successfully implemented a diverse range of resilience programs, resources, and approaches** that have proven effective in schools, among youth, and within communities. Leveraging our extensive experience and expertise, we are uniquely positioned to facilitate the **swift transformation of low-income communities** in South Africa, fostering social, ecological, and economic resilience.



POWERED BY

We extend our gratitude to the **SAB Foundation** for their generous support of SEED's work through the Resilient Neighbourhood Pilot project. This collaboration, in partnership with the **Economic Development Department** and accessed funds through the Competition Commission, explores the transformative potential of locally owned and managed solar energy hubs. With a focus on equity, resilience, and climate protection, this pilot project holds promising prospects for addressing energy challenges in our communities.

We would also like to express our appreciation to our esteemed funders, including the **Lemonaid & ChariTea Foundation, Hans Hoheisen Charitable Trust, Rolf-Stephan Nussbaum Foundation, Douglas Jooste Trust, AC Louw Trust, Dandelion Trust, The Solon Foundation, Uthando SA, and Investec**, for their trust in our organization and their invaluable contributions towards our initiatives.

We are also grateful for the generous support of individual donors who have made contributions through our Global Giving platform. **We invite others to join our community of supporters by visiting <https://www.globalgiving.org/projects/help-us-to-grow-the-green-army/>.**

Government Partnerships

We extend our heartfelt appreciation to **Ron Mukhanya** and **Vera Mukasa** from the **Department of Environmental Affairs & Development Planning** for their ongoing stipend support throughout the year. This support has had a meaningful impact on the lives of the youth we serve, alleviating financial concerns and enabling them to focus on their training and future prospects.



DIRECTORS REPORT

Unleashing the Potential of Individuals in Building Resilient South African Communities.

At SEED, we have always held the belief that capacitated individuals possess the potential to change the world. Our work has been centered around inspiring and equipping individuals, empowering them to unlock their own potential and become catalysts for positive change.

It is with great satisfaction that we are now witnessing the groundswell of resilience across the Cape Flats, as SEED Alumni actively engage with communities, food systems, enterprises, and organizations, effectively transforming communities from within.

This development is particularly heartening in the face of the multitude of crises we are all too familiar with, such as youth unemployment, climate change, and significant national resilience challenges in energy, food, and water.

It also points to a solution: equipping those in need of work with the work that needs to be done.

In 2022, we were privileged to receive substantial funding support from the SAB Foundation through a partnership with the Department of Economic Development. This support has enabled us to deepen our work, make investments in infrastructure at Rocklands Resilience Hub, and successfully pilot potentially impactful projects like: Alumni Ignite, The Resilience Coach and The Smart School Solar Project.

Building resilient communities requires collaboration, partnerships, and collective effort. At SEED, we are now working to position our decades of experience in resilience education to benefit . We will focus on strengthening networks and leveraging strategic alliances to amplify our impact and work towards creating more meaningful and sustainable change.

Leigh Brown



POSITIONED FOR IMPACT

SEED has the following existing prototype solutions:

SMARTSCHOOL SOLAR INITIATIVE:

The Pilot was an incredible success and we have written up the Operating Manual as well as a Learning Journey that enable this Pilot to be easily replicated. The system not only gets schools loadshedding free and generates income through selling energy back to the grid, it also includes a savings model for schools that grows the, much needed, infrastructure of schools but also saves to install a solar system in another school every few years (pay it forward). The Project is innovative and could have a huge impact on under resourced schools and the energy landscape in South Africa.

SEEDING FUTURES RESILIENCE TRAINING: We have seen the incredible power of this program for real change at an individual level. We have now seen the power of our Alumni through the Alumni Ignite Program that was piloted in 2022, where 116 Alumni Facilitators engaged with 18 800 individuals around resilience . We have formalised the modules and developed an online teaching support system that enables other teaching institutes to deliver the training. If this training is mainstreamed it could have an incredible effect on the wellbeing of millions of South Africans, jump starting localised green economies as it goes.

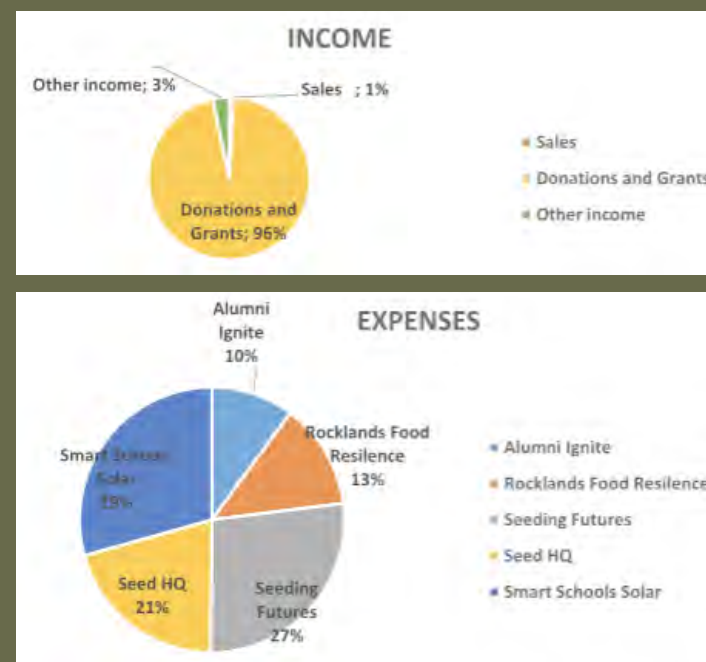


THE RESILIENCE COACH: Is a WhatsApp Messaging Service that coaches individuals through a series of tried and tested resilience practices that focus on saving money and growing our ability to withstand shocks like energy and food shortages and also builds climate adaptation into Cape Town's communities. The Resilience Coach brings to life the City of Cape Town's Sustainable Living Handbook and includes resilience practices honed through the Household Resilience module of Seeding Futures Training as well as valuable input from our partner, Ukuvuna. The focus is saving money and growing our ability to withstand shocks (food shortages and loadshedding) and also builds long-term climate adaptation in Cape Town's communities. SEED is looking for a partnership with the City of Cape Town to roll the coach out across the city and localising our living by connecting them to city services, localising the economy and our food systems and city services. This is a relatively cheap way to reach, potentially, millions of people and might, unfortunately, become more and more needed as the fuller impacts of Climate Change land.

FINANCIAL REPORT

From a financial perspective, the past year has been remarkable, with a significant increase in our project spend, primarily driven by the SAB grant. Although our sales were lower due to our concentrated efforts. on delivering activities, we anticipate a sales upturn in the latter part of 2023.

Furthermore, our funding situation is positive and we have signed three-year partnerships with two funders. This development is crucial for ensuring the long-term sustainability of SEED.



SEEDING FUTURES

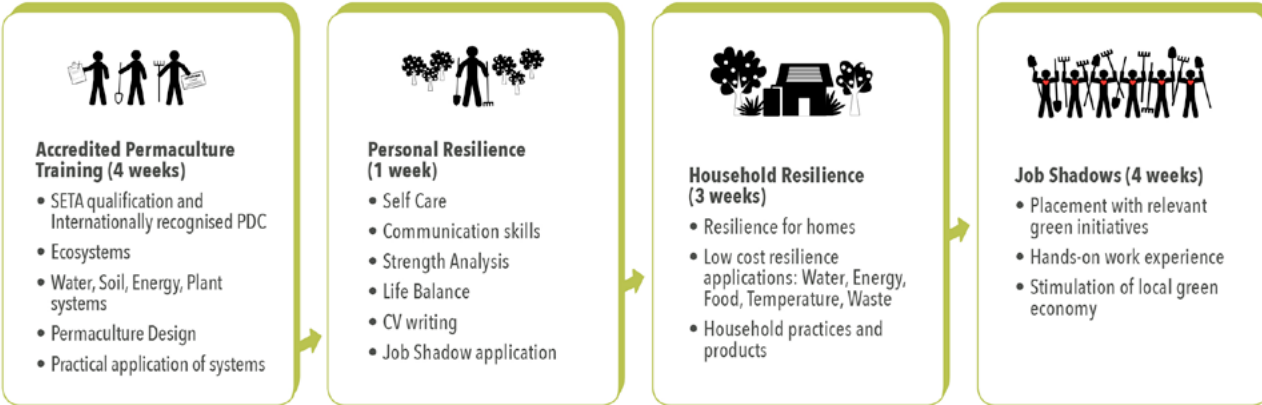
THE SEEDING FUTURES PROGRAM SERVES AS THE CORNERSTONE OF OUR WORK AND SERVES AS THE CATALYST FOR OUR ENGAGEMENT WITH BENEFICIARIES. Designed to address the pressing issues of climate change and youth unemployment, Seeding Futures inspires and equips young individuals to cultivate their own resilience while creating pathways to employment in the local green economy.

Our evaluation systems reveal that the initial transformation occurs within the internal landscape of students. They experience a profound rise in hope and agency as they discover their identity, find belonging in a group, and identify positive actions to navigate their lives by reframing challenges as opportunities.

The program has the potential to transform communities from within. We have observed that 89% of program graduates adopt long-term resilience practices, leading to financial savings and a sense of well-being. This ripple effect reaches an average of five households per graduate, demonstrating the power of capacitated and committed individuals in cultivating community resilience one household at a time.

The Monitoring & Evaluation Systems of Phase II have provided this summary: *"The Seeding Futures program combines personal development support, technical permaculture training, and cost-effective resilience techniques. This equips individuals with both hard and soft skills, fostering self-knowledge, behavior change, heightened personal resilience, and overall well-being. Importantly, the enhanced self-awareness and soft skills, alongside the acquired hard skills and experience, form a foundation that enhances employability, entrepreneurial spirit, and economic resilience among students. This inclusive approach also promotes various non-income generating livelihood strategies."*

Additionally its core components, the program offers job placements with local green businesses. We have initiated the mapping of the Cape Flats Green Economy, establishing a database of 64 local green enterprises. Through these job placements, our students have contributed 26,500 human hours to these enterprises, yielding a mutually beneficial outcome where students gain valuable work experience while finding employment opportunities.



FROM OUR PARTNERS

"It is indeed inspiring and heart-warming to know that there are organisations like this which empowers people to change their lives - the saying 'teach a person to fish and you feed them for life' is truly embedded in your philosophy and programmes. This has clearly been demonstrated in one of our patients, who arrived at the clinic depressed and exhibiting all the of long-term stress. Three months later they returned to the clinic for a follow up and the change in them was unbelievable. The patient's eyes were brighter, some weight had been shed and vitals had stabilized. When I asked what brought about this remarkable change - not only in appearance, but in mindset, they explained that had completed a programme at SEED and it was so inspiring - it had changed their life completely! The depression had lifted and they were excited about life, talking about the plans that they had started putting in place in their life through the skills acquired at SEED. Visiting the site I could understand first-hand what the patient had told me and why it had made such a difference in their life."

Dr W Ericksen-Pereira,
Faculty of Community and Health Sciences
University of the Western Cape

IMPACT AT A GLANCE

SEEDING FUTURES
 208 Seeding Futures graduates
 116 Alumni mentored as facilitators
 18 835 reached by Alumni facilitators through 221 teaching days
 122 Outdoor Classroom lessons

A short movie about the Seeding Futures training:

<https://www.youtube.com/watch?v=zzc-ZQv0vVU>



ALUMNI IGNITE

THE SAB FOUNDATION GRANT PROVIDED US WITH THE OPPORTUNITY TO IMPLEMENT FORMAL PROGRAMS AIMED AT ENHANCING ALUMNI CAPACITY, WITH A SPECIFIC FOCUS ON LIVELIHOODS AND AMPLIFYING IMPACT. THE OUTCOMES OF THESE INITIATIVES WERE TRULY REMARKABLE, POSITIONING THIS PROGRAM AS HAVING SIGNIFICANT POTENTIAL FOR WIDESPREAD IMPLEMENTATION.

Our efforts were concentrated on the following areas:

THE OUTDOOR CLASSROOM PROGRAM:

Collaborating with Rocklands Primary School teachers, SEED facilitators dedicated Wednesdays to deliver outdoor classroom lessons. We successfully conducted 122 lessons working with 160 students per week. The program specifically targeted Grade 4-6 teachers, as the Outdoor Classroom proved to be an ideal environment for bringing the Natural Science Learning Area to life.

TRAINING TRAINERS:

We equipped 116 alumni with the necessary skills to become trainers through a series of workshops. We provided teaching stipends to support Alumni teachers to teach . This initiative resulted in 116 alumni delivering 221 teaching days, reaching over 18,000 individuals. The immense potential of our alumni to make a substantial impact on their communities was evident through these efforts.

INCUBATING ENTERPRISES:

Promoting the growth of local green economy enterprises, particularly those catering to local needs, serves as an effective means to foster resilience and circulation of capital within communities. In partnership with Seed to Harvest, we facilitated two cohorts of an Incubator program, graduating 27 entrepreneurs. This comprehensive program, consisting of 12 modules, focused on the essential components of establishing a business. To support these enterprises, we provided resources such as marketing support, Yoco Machines, and assistance with formal business registration. Furthermore, we facilitated four markets at Rocklands, allowing entrepreneurs to gain hands-on experience in customer interaction and sales.

BUILDING CAPACITY IN COMMUNITY FOOD GARDENS:

We were inspired to witness our alumni rise to the occasion and started to feed their communities during post-lockdown hunger, planting gardens and starting soup kitchens. There exists now an opportunity to localize our food systems, unhitching ourselves from the destructive industrial feeding system and prioritizing the nourishment of our people. To this end, we supported two alumni to graduate 134 capacitated community gardeners through 5 Organic Gardening basics workshops. The workshops covered theoretical aspects such as gardening principles, planting schedules, and record-keeping and was hands-on practical exercises. Participants learned about compost-making, seedling cultivation, transplanting, seed harvesting, and various bed-making techniques. **We then mobilized resources for 30 community gardens, providing rain tanks, tools, and windbreak species, thus ensuring resilience in these food-producing initiatives, benefiting 4,027 individuals..**

Take a moment to watch how the course has transformed the life of one of our alumni :

https://www.youtube.com/watch?v=IWGF_3EJJlg

IMPACT AT A GLANCE

ALUMNI IGNITE
64 green economy partners
27 enterprises incubated
6 Alumni markets
28,800 Job Placement hours into green economy



LOCAL ENERGY RESILIENCE

THE ROCKLANDS PRIMARY SMART SCHOOL SOLAR PILOT PROJECT WAS DEVELOPED IN COLLABORATION WITH TFE ENERGY, THE SAB FOUNDATION AND ROCKLANDS PRIMARY SCHOOL. IT INVOLVED THE INSTALLATION OF A PHOTOVOLTAIC SYSTEM AT ROCKLANDS PRIMARY, PROVIDING IMMEDIATE BENEFITS TO THE SCHOOL AND SERVING AS A PIONEERING ENDEAVOR WITH THE POTENTIAL TO GREATLY IMPACT UNDER-RESOURCED SCHOOLS AND THE ENERGY LANDSCAPE IN SOUTH AFRICA.



The solar system effectively meets Rocklands Primary's energy needs, ensuring uninterrupted power supply during load shedding while also enabling the school to sell excess energy back to the grid. A live data display allows staff, parents, and students to monitor energy generation, savings, and carbon offset. The savings plan allocates income to three funds: maintenance (covering installer visits, repairs, and daily management), school improvements (determined by the Governing Body), and a pay-it-forward fund (supporting the installation of solar systems in other schools within a seven-year timeframe). This self-replicating model not only doubles the initial impact but also empowers recipients to become benefactors themselves.

To facilitate easy replication of the project in other schools across South Africa, an operating manual has been developed. This comprehensive guide provides step-by-step instructions, including diagrams and screen shots, for day-to-day maintenance and financial management of the solar system online. It covers essential tasks such as logging payments, downloading PDF bills, and modifying tariffs. All documents are standardized to ensure straightforward implementation of the project.

SEED has also designed a solar learning journey to integrate the solar system into the school curriculum. These learning modules introduce students to fundamental concepts related to energy sources and electricity, providing worksheets and examples to guide them through problem-solving exercises. By incorporating solar energy education, we aim to inspire and cultivate a future generation of solar engineers.

Here is a short movie about
Smart School Solar Project:

[https://www.youtube.com/
watch?v=i6LNCnbvNUc](https://www.youtube.com/watch?v=i6LNCnbvNUc)

IMPACT AT A GLANCE

LOCAL ENERGY RESILIENCE

Rocklands Primary is off the grid.
16,010 kg of CO2 emissions reduced
5,2663 kg standard coal saved
15,985 kWh of energy generated by
the system, 96% of which is used by
the school.
R 292,2455104
39415 hours of operation

LOCAL FOOD RESILIENCE

AT ROCKLANDS, WE ARE CURRENTLY INCUBATING SEVERAL ENTERPRISES THAT FORM AN INTEGRAL PART OF OUR LOCAL FOOD RESILIENCE SYSTEM, FORMING THE FOUNDATION FOR OUR FOOD SYSTEM TOUR.

FOOD GARDEN

We pivoted vegetable production to support local feeding schemes in March 2020, at the start of lockdown.

In response to the COVID-19 lockdown in March 2020, we swiftly shifted our vegetable production to support local feeding schemes. Since then, we have remained committed to this initiative. Our efforts involve harvesting nutrient-dense, organic vegetables and baking naan breads to contribute to three local feeding schemes, which collectively provide daily meals for 677 community members. Additionally, we grow food specifically for Marleys Café

REGENERATION NURSERY

The Regeneration Nursery plays a crucial role in our efforts by producing Easy Peasy trays for Cape Town home gardeners. We also supply vegetable seedling trays to community gardens and individual seedlings to residents of Mitchells Plain. Furthermore, the nursery serves as a comprehensive resource for setting up Permaculture gardens, offering the Top 10 most useful plants for your home.



Check out our online
ordering system:

[https://seed.org.za/pages/
easy-peasy-seedling-trays](https://seed.org.za/pages/easy-peasy-seedling-trays)



MARLEYS CAFE

Marleys Café has naturally evolved from our kitchen, initially established to provide meals for SEEDs students. Recognizing the positive impact of healthy, garden-based meals on our students' well-being and learning abilities, we designed a range of replicable, nutritious meals based on the national average budget of R30/day. Not only did the students testify to the transformative effects of these meals, but we also discovered a growing customer base within the school community. This realization led us to envision Marleys Café as a sustainable business. Under the guidance and mentorship of Brenda Quinn, the talented force behind the delicious cooking, the café now serves students, community members, and visiting tourists.

To learn more about
Marleys Café, you can watch
a short film here :

<https://www.youtube.com/watch?v=0rBdvi7w5Jo&t=5s>

FOOD SYSTEMS TOUR

To enhance awareness and understanding of local food systems, we have meticulously crafted and piloted a learning journey culminating in a delectable lunch at Marleys Café. We have had the privilege of hosting 262 individuals on these enlightening tours this year, and we are now preparing to launch this tour as a paid experience for interested customers.

IMPACT AT A GLANCE

LOCAL FOOD RESILIENCE

881kg vegetables and
9647 naan breads to local feeding schemes
10,146 meals to people who need them
134 Organic Gardening graduates
20 resilience systems in Community
Gardens, feeding 4027 individuals
642,000 seedlings sold to home gardeners
1,642 individuals through tours
89 local home gardens ignited

KEY

- 1 The Indigenous WINDBREAKERS shield our gardens from prevailing winds and provide habitat. Stand next to one and feel how the wind breaks.
- 2 Our Model RDP HOUSE is built to the budget and floor size of a so-called Reconstruction and Development Plan (RDP) house and is made of recycled materials i.e. tires, pallets, building rubble. Note, "RDP House" is an unofficial term for gov't's low cost housing model which has gained traction in South Africa.
- 3 Our FOOD GARDENS provide nutritious vegetables to three local feeding schemes and are used to make lunch at our café (SEEDs-incubated enterprise).
- 4 The FOOD FOREST includes Mediterranean Fruit species (Carob, Pomegranate, Fig, Olive) and useful plants (insectary, compost, medicinal, cosmetic).
- 5 The DUNE REHABILITATION garden showcases endemic species to raise awareness of the importance of conserving these plants because of their critical roles in the ecosystem.
- 6 We have planted a small coppice woodland as PLANTS FOR FUEL to provide stick wood for rocket stoves. A coppice is an area of trees that are periodically cut back to ground level to stimulate the growth needed to provide more wood.
- 7 COMPOST TOILETS mean that we aren't wasting drinking water to flush. Thank you for your contribution (wink).
- 8 Our Community MEDICINAL GARDEN serves locals with a Pharmacy. Plants include Wild Ais, Cancer Bush, Aloe, and Pulbine species. We have planted thorny plants for SECURITY (Carissa Species and Kei Apples).
- 9 EASY PEASY Seedlings are grown with love in our NURSERY and support home gardeners in Cape Town with seasonal plant-ups grown from organic and heirloom seeds. Pick some up on your way out or order online.
- 10 The NURSERY is a space to propagate and prepare beneficial plants at affordable prices for local communities. See if you can spot some of the plants mentioned on this map!
- 11 A MIYAWAKI FOREST is a high-density four-layered forest that consists exclusively of indigenous trees.
- 12 CAFE - initially run by SEEDs, the café is now transitioned to a Seed Alumni-run social enterprise. A demo of how we grow the local green economy through our training and business incubation.
- 13 OUTDOOR CLASSROOM constructed of local materials save for the corrugated iron roof. This classroom is a space for training, community gatherings and features street spray art by local artist Seth1.
- 14 FOREST CLASSROOM a shaded venue for learners to get immersive education about all things resilience and sustainable.



PERMACULTURE ETHICS: Earth Care, People Care, Fair Share

Permaculture Design Principles

- Observe and interact
- Catch and store energy
- Obtain a yield
- Apply self-regulation & accept feedback
- Use & value renewable resources & services
- Produce no waste
- Design from pattern to details
- Integrate rather than segregate
- Use small and slow solutions
- Use and value diversity
- Use edges & value the marginal
- Creatively use and respond to change

SEED'S VISION :
A transformed South Africa where young people are inspired and empowered to create thriving and resilient communities.

WE'RE ON A MISSION :
to skill and youth to grow personal, household and community resilience and prepare them for work in the local green economy to contribute to a thriving city

