



NAME OF THE ORGANISATION

**Kyanninga Child Development Centre**

TITLE OF THE PROPOSED PROJECT

**Purpose-built Therapy and Rehabilitation Centre  
in Kabarole District, Western Uganda**



# Executive Summary

## Project Overview

Kyaninga Child Development Centre (KCDC) is a Ugandan registered non-profit organisation, located in Fort Portal, Western Uganda. It was founded in 2014 to create equal opportunities for children with disabilities (CWDs) through the provision of physical, occupational and speech therapy, orthopaedic services, inclusive education and community awareness, technical training and economic empowerment to families, caregivers and communities.

Currently, KCDC's salaried staff of 18 provide monthly therapeutic care for over 700 children with a wide range of physical, intellectual and communication disabilities via an innovative community-based rehabilitation programme through which more than 2,700 children have received assessment and treatment to date. The current average number of new referrals is 95 children a month.



KCDC partners with 20 local government health centres to provide monthly outreach clinics and 74 local nursery, primary and vocational schools to support 290 students with individual learning needs. More than 570 community and health workers have been trained in identifying and managing disability and more than 1,200 pieces of specialist adaptive equipment have been provided with cost sharing.

KCDC has expanded their programming from activity in 1 district in 2014 to 7 districts in 2019, with the head office located in Fort Portal and a first satellite clinic opening in 2018, 80km away in Kasese District. KCDC intends to continue expanding their current service provision by establishing multidisciplinary clinics in other districts where CWDs are presently unsupported, through an ambitious multi-year plan to open 4 new clinics in the next 5 years. Part of this expansion includes the construction of a new purpose-built Therapy and Rehabilitation Centre in Fort Portal.

The KCDC Therapy and Rehabilitation Centre requires an investment of just under \$365,000, and is intended to provide a new headquarters that will accommodate the organization's expansion while providing purpose-built facilities that will include multiple diverse therapy rooms, a rehabilitation facility, a hostel for patients requiring ongoing intensive therapy and their carers, and a conference centre for community awareness, economic empowerment and technical training sessions.

The Therapy and Rehabilitation Centre will create substantial cost savings in property rental fees, conference and training venue hire and transport costs, and provide KCDC with a platform to move to the next level in terms of delivering much needed services to children with disabilities in the region.

## Context

Kyanninga Child Development Centre was established to provide much needed high quality, specialised and affordable assessment, treatment, education and support to children with disabilities, and their families and carers, to enable them to lead more independent lives.

Kabarole District in western Uganda is a predominantly rural district, where tea plantation and subsistence farming are the main industries, with a mean income of less than USD \$100 per month and the majority of families in the rural communities surviving on less than \$2 a day. Because of the low standards of healthcare and limited education in Kabarole District, the community faces high rates of children born with disabilities (4% aged 2-17 years old), many of which are related to damage to the infant brain during pregnancy, childbirth and the first few months of life.

Children with disabilities are one of the most marginalized groups worldwide, and in Uganda, where access to healthcare and rehabilitation is extremely limited, especially in rural areas, approximately 13% (2.5 million) children are living with a disability. Widespread local beliefs that disabilities are an untreatable curse, cause disabled children to be excluded from their communities, lead to high levels of paternal abandonment, increased family stress, financial burdens and a reluctance to seek help. This poor understanding of disability is a huge barrier to the progress, learning and independence of many children. In addition to these social barriers, there is poor understanding of disability among healthcare workers and very few trained therapists able to provide adequate rehabilitation. Furthermore, the cost of travel to the limited services, and the fees charged for them, are prohibitive to most families.

Early intervention with rehabilitation therapies (physio, occupational, speech and orthopaedic) and parental education can have a significant reduction in the levels of impairment experienced as the child grows, and greater functional independence as the child is given opportunities and intervention at a much earlier stage, preventing secondary disabilities. KCDC's multi-disciplinary, holistic and community-driven organisation works hard to create equal opportunities for children with disabilities and reduce the stigma and discrimination they face.

KCDC's mandate is to provide high quality therapy and rehabilitation services, promote awareness and education of disability amongst community members, give technical training to both caregivers and clients and economically empower families and caregivers. KCDC's innovative community outreach programme, partnering with government and private health facilities and schools has enabled more than 2,400 CWDs access to qualified and specialist education and therapy services that would otherwise be unavailable, inaccessible or unaffordable.

KCDC is the only centre in Western Uganda providing these specialist therapy services, as well as being the only centre providing this holistic approach of community-based rehabilitation at a cost affordable to all. Because most of the families KCDC supports live in extreme poverty and do not have enough income to support the high costs of caring for a child with a disability, KCDC only charges a nominal \$1 monthly subscription fee or payment in kind of local produce, for its services.

KCDC relies largely on donors to support its work. In an effort become less reliant and more self-sustaining, the Kyanninga Dairy was opened in 2016 to supply the Ugandan market with high-end cheese, and all proceeds from the dairy are directed towards supporting KCDC in its work. Additionally, three annual fundraising sporting events (Kyanninga Triathlon, Running the Rift and Ride the Rift) are held to further raise much needed funds for the centre.



*Top: KCDC adopts a multi-disciplinary community-based rehabilitation approach to create equal opportunities for children with disabilities and their families. Bottom left: The Kyaninga Dairy was established to raise extra revenue for KCDC through the sale of high-end cheese. Bottom right: Three annual sporting events contribute much needed funds to the centre.*



## Investment Rationale for the Proposed Project

The new Kyaninga Therapy Centre seeks to address the need for specialised care for children with disabilities, and extend the care KCDC provides across the Western region of the country reaching a further 3,000 children with disabilities over the next 3 years. The purpose built centre will allow KCDC to offer much needed services that it is unable to at present due to a current lack of facilities, as well as providing multiple ancillary benefits as follows:

### **Improved accessibility**

KCDC's existing premises consists of a converted residential building and additional out-buildings. While all efforts have been made to adapt the structure to improve accessibility for people with disabilities, there is only so much one can do. A new purpose-built centre allows us to address these shortcomings at inception.

### **Multiple therapy/treatment rooms**

Space is limited at KCDC's current premises. The proposed KCDC Therapy and Rehabilitation Centre will feature multiple therapy/treatment rooms, enabling us to reduce waiting times and treat more children on a daily basis.

### **Specialized therapy**

The new centre will allow us to begin offering specialized treatments that cannot currently be offered, such as hydrotherapy, which aids in the improvement of movement in children with complex disabilities by easing their movement in the water, stimulating their senses and helps decrease muscle tone and muscle spasticity.

### **Intensive therapies**

The purpose-built centre will include a small hostel that will encourage families travelling from further afield to attend the centre for specialised intensive therapy that may encompass longer-term rehabilitation services. Currently, KCDC has no such facilities and families are forced to travel to and from our current premises more regularly than they can afford, or stay in local guesthouses or, as is unfortunately often the case, forego the intensive therapy that would be of great benefit to their children. Costs at the hostel will be kept to a minimum for patients and their carers, and the hostel will have its own produce garden where families can grow and harvest food, and a kitchen where they can cook for themselves.

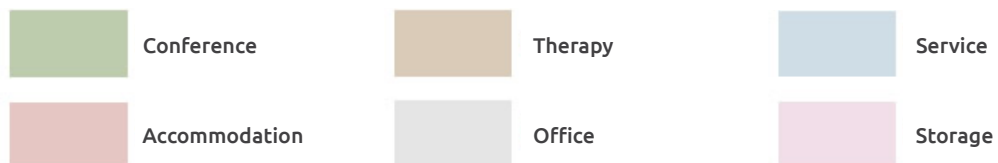
### **Conference facility**

A purpose-built conference room will facilitate regular training workshops for healthcare and community workers, community leaders, teachers and other stakeholders. The conference room will represent a substantial saving to KCDC, as the cost of venue hire will be eliminated moving forward (currently approx. \$300 per workshop). Additionally, the conference room can provide income generating opportunities of its own when made available as a venue for hire to outside agencies.

### **Office space gains and rental savings**

The move to the purpose-built centre will save KCDC over USD\$6,000 in rent per year, which is the equivalent to the cost of providing 285 therapy sessions or the annual salary for one qualified therapist, while at the same time offering more office space for KCDC administrative staff.

88



*Proposed elevations for the  
Kyaninga Therapy and Rehabilitation Centre*



# Project Costs

## Secured

### Land Purchase

The land for the proposed Kyaninga Therapy and Rehabilitation Centre has been secured. It was purchased through donations from local well-wishers.

### Design Build Summer School

The costs for accommodating, feeding and transporting the students and their tutors for 8 weeks, as well as international flights for the tutors, will be covered by the German non-profit BFOF (Bauen für Orangefarm).

### Local Workforce & Logistics

Kyaninga Lodge will make available to the project 14 artisans (carpenters, plumbers, welder, electricians etc.) and 1 construction manager, as well as use of a tractor and trailer for transporting materials, use of the lodge workshop for making windows and doors, and use of a generator.

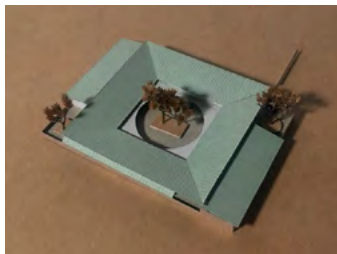
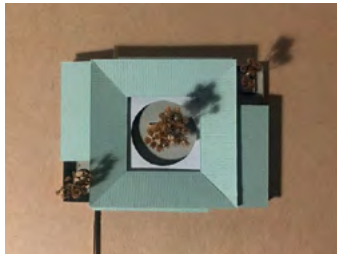
## Unsecured/Outstanding

CONSTRUCTION COSTS	
Building costs	\$256,960
• 803m² @ \$320/m² (includes additional local workforce and transport)	
Contingency (10%)	\$25,696
Infrastructure	\$25,000
• roads, water tanks, septic tanks, solar, footpaths	
Total before VAT	\$307,656
VAT 18%	\$55,387
<b>TOTAL CONSTRUCTION COSTS</b>	<b>\$363,034</b>
<b>GRAND TOTAL</b>	<b>\$363,034</b>

## Design Fees

“Real studio” is a design and build summer school project by the University of Applied Sciences Munich that provides its architectural students with the opportunity to move beyond merely designing abstract structures. Instead, students work to design real buildings for non-profits in Africa and, during their long summer vacation, travel to the site to participate as volunteers in the realization of the project. For the students, it's an invaluable way of gaining real first-hand learning and experience of translating their designs into bricks and mortar. For the non-profits, it's access to free design services as all the designs are offered on a probono basis and overseen by senior architects and teachers from the faculty of architecture.

KCDC was able to persuade the University of Applied Sciences Munich that the new Therapy and Rehabilitation Centre would make an excellent candidate for the “Real studio” project, meaning no professional fees for the design of the centre will be incurred, representing a huge saving on costly architectural fees for KCDC. The living and travel expenses for the students and supervisors will be covered by the German non-profit “BFOF” (Bauen für Orangefarm) to facilitate their volunteer work.



roof studies/ model 1:500



inside/ outside



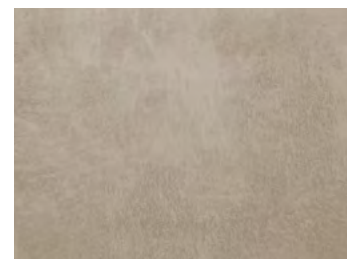
structure/ material



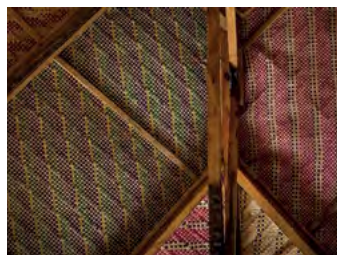
Clay floors



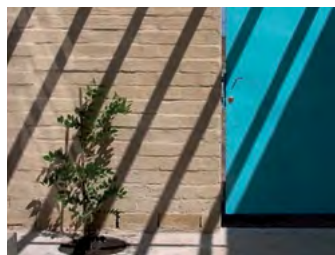
Clay plaster- outside



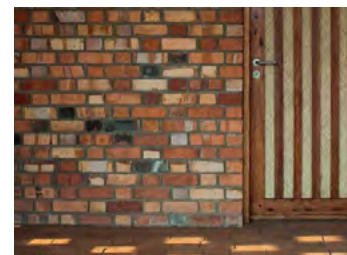
Clay render- inside



Banana fiber and local timber



Rendered rammed earth bricks



Strong clay bricks timber doors/ windows



*Top left/bottom left/bottom right: Students from Munich at work on a primary school project in South Africa.*

*Top right/centre: Completed school project in South Africa.*

*Opposite page: Proposed detailing for the Kyaninga Therapy and Rehabilitation Centre*

## Organizational Background (Expertise and Experience)

### Steve Williams

Steve is the co-founder and executive director of KCDC, and oversees the running of the organization. He is the creator of Kyaninga Lodge ([www.kyaningalodge.com](http://www.kyaningalodge.com)) and his experience of building and running this hugely successful business is invaluable for KCDC as it grows.

KCDC is also deeply personal for Steve as the organization was founded because of the experiences and difficulties that Steve and his wife Asha faced with their own son, who has epilepsy and development delay. They initially advertised for a physiotherapist to come out to Uganda for 6 months to provide intensive therapy for their son, but after realising how many other families were facing similar and even greater challenges, they felt compelled to act and established KCDC as a community-focused child therapy centre. As a related funding source for KCDC, Steve also founded the Kyaninga Dairy ([www.kyaningadairy.com](http://www.kyaningadairy.com)) in 2017, which produces high-end cheese for supply to the Ugandan market.

### Fiona Beckerlegge

Fiona is the physiotherapist who came to volunteer with Steve and Asha in 2013. She is a specialist children's physiotherapist with over 20 years of experience working with people with disabilities in both acute and community settings in Tanzania, the UK, the Caribbean and, for the past 6 years, in Uganda. She is co-founder and clinical director and manages the day-to-day activities of the centre and the team, as well as developing new partnerships and relationships.

### Board of Directors

KCDC has a board of directors and advisors that add valuable support and advice to the team, through mentorship and regular meetings.

## Contact Information

**Name of Organisation:** Kyaninga Child Development Centre

**Registered Charity:** S5914/11444

**Contact Person:** Steve Williams, Co-founder and Director

**Email:** [steve@kyaninga.com](mailto:steve@kyaninga.com)

**Phone/Whatsapp:** +256 782869592

**Skype:** Steve.williams914

**Website:** [www.kyaningacdc.org](http://www.kyaningacdc.org)

**Facebook:** [www.facebook.com/kyaningacdc](http://www.facebook.com/kyaningacdc)

**Location of Project:** Fort Portal Municipality, Kabarole District, Western Uganda.





Plot 7, Bank Side, Boma  
Fort Portal, Western Uganda  
+256 793 419315  
[info@kyanningacdc.org](mailto:info@kyanningacdc.org)  
[www.kyanningacdc.org](http://www.kyanningacdc.org)

Uganda NGO: S5914/11444 Reg 11031  
England and Wales: Charity 1164706