

# Agricultural Secondary School

Annual report July 2018- June 2019



*Students coming out of class*

July 2019



# FORWORD

This has been the 7<sup>th</sup> year of the LAP. At the beginning of the school year 2018-2019 there were 233 students (124 girls and 109 boys).

The results of the exam for students of the 4<sup>th</sup> year was stable so 72,5% got their diploma (national average was 26,2%).

Students and teachers are working towards the same objective: education. Accountability has been stressed to both teachers and students.

We have opened the second cycle of studies which will prepare the students for the professional agricultural baccalaureate in 4 additional years.

Next school year the number of students will increase to 275. The main challenge will be to find sponsors for so many students.

Sincerely,

Hervé Millet

A handwritten signature in blue ink, appearing to be 'HM', with a small dot at the end of the signature.



## Contents

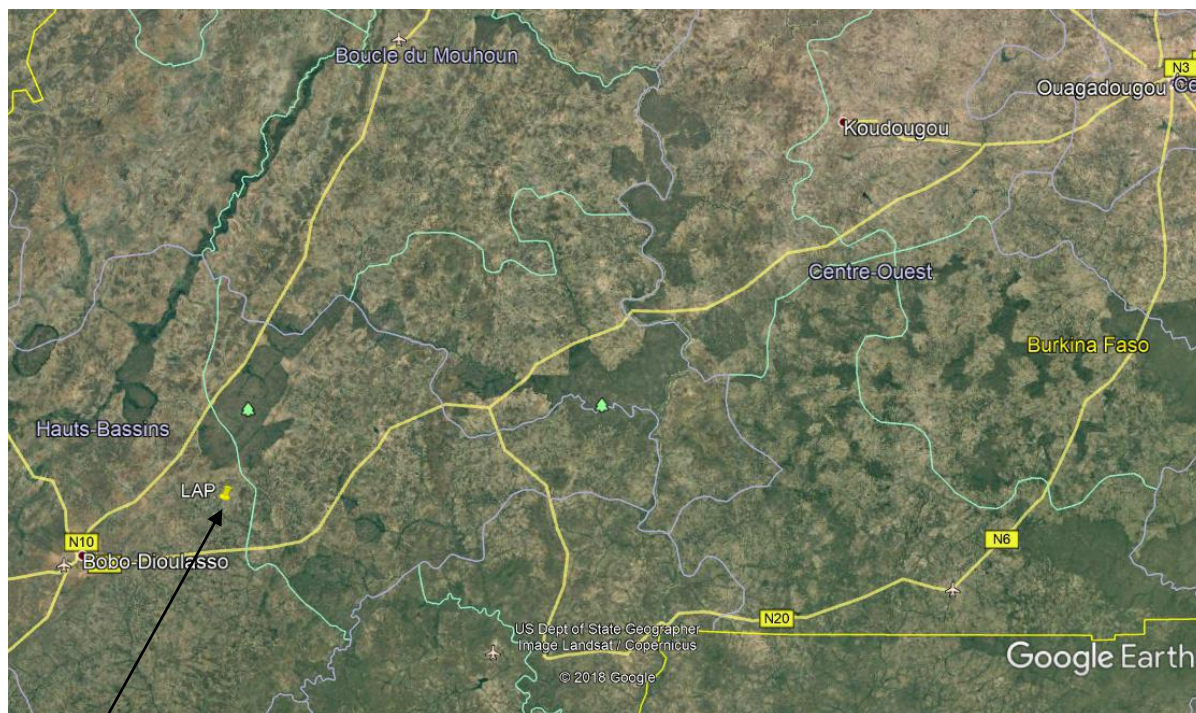
GENERAL INFORMATION .....	6
<b>Objectives of the LAP</b> .....	6
<b>Location of the LAP</b> .....	6
<b>Organization</b> .....	6
<b>Parents association</b> .....	7
STUDENTS .....	8
<b>Number of students per class 2018-2019</b> .....	8
<b>Gender analysis</b> .....	8
<b>Results of the students 2018-2019</b> .....	8
<b>Results of the 4<sup>th</sup> year</b> .....	8
PERSONNEL .....	10
<b>Personnel year 2018-2019</b> .....	10
<b>Evolution for 2019-2020</b> .....	11
LIVING CONDITIONS.....	12
<b>Students</b> .....	12
<b>Permanent staff</b> .....	13
PRODUCTION AT THE LAP .....	14
<b>Animals</b> .....	14
<b>Beekeeping</b> .....	15
<b>Agriculture and gardening</b> .....	16
<b>Fruit trees</b> .....	17
<b>Animal feed production</b> .....	17
FINANCIAL REPORT 2018-2019 .....	18
<b>Resources</b> .....	18
<b>Personnel costs</b> .....	18
<b>Fixed and variable costs</b> .....	19
<b>Results</b> .....	19
<b>Evolution of costs per student per year</b> .....	19
<b>Budget 2019-2020</b> .....	20
<b>Budgeted income 2019-2020 from foreign sponsors</b> .....	21
<b>Infrastructure built or being built in 2019:</b> .....	22
<b>Infrastructure to be built, not yet funded for 2020</b> .....	23
COMMUNICATION .....	24

## GENERAL INFORMATION

### Objectives of the LAP

- To offer quality education to children coming from poor families
- To offer an education adapted to the need of the environment
- To offer an education which helps to identify and develop the strength of the students
- To be sustainable with the donations of the sponsors, the fees paid by the parents and the activities of the LAP

### Location of the LAP



The LAP is situated at 52 km from Bobo Dioulasso, in the region of Hauts Bassins, Province du Houet, township of Léna, village of Oualana.

The 42 Hectares of land were given to the ASAP foundation by the villagers of Oualana.

### Organization

The LAP was officially opened in 2011. In April 2015, the local “Association for the LAP” (ALAP) took over the management of the LAP.

The board of ALAP is shown in the table below.

Title	Name/First name	Address	Job
President	Millet Hervé	3492 Bobo Dioulasso	Engineer
Treasurer	Berehoudougou Rock Parfait	3492 Bobo Dioulasso	Accountant
Secretary	Sawadogo Pamoussa	3492 Bobo Dioulasso	Teacher

## Parents association

Students are selected from 12 ASAP villages. Each village has 2 representatives in the parents association.

The Parents association meets 4 times per year. All the parents are invited to the LAP at the end of each quarter. The role of the parents association is to communicate with the villages, discuss issues related to students and their studies with the board of the LAP.



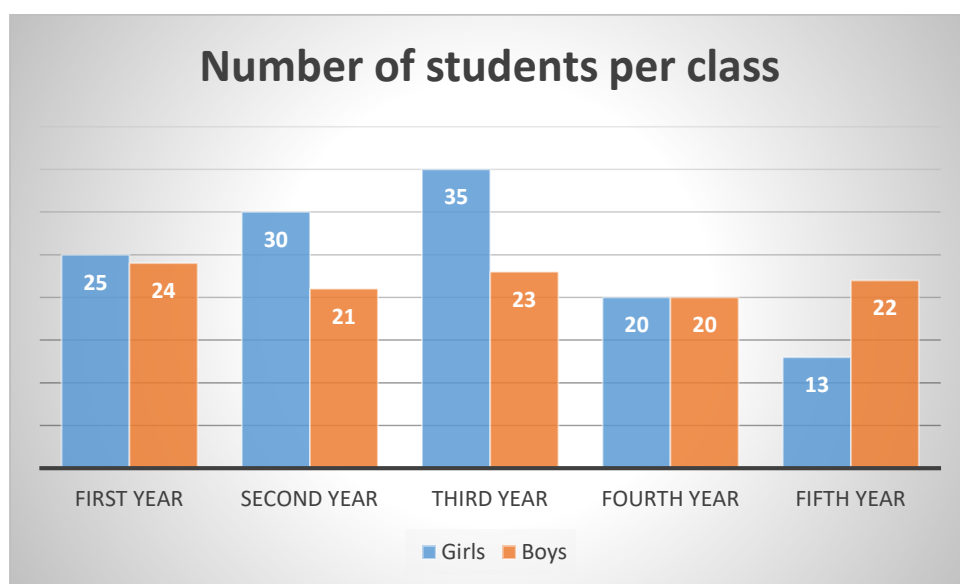
*Parents association meeting*



*Students at the amphitheater*

## STUDENTS

### Number of students per class 2018-2019



### Gender analysis

In the school year 2018-2019, 53% of the students were girls.

### Results of the students 2018-2019

Class	Students sept 2018	Students that failed	Student redoing the year	Students passing	% passing
First year	49	1	0	48	98%
Second year	51	5	0	46	90%
Third year	58	7	0	51	88%
Fourth year	40	8	3	29	73%
Fifth year	35	1	0	34	97%
Total	233	22	3	208	89%

The results of the students are in line with our expectations. We always have a bigger drop out in the third year. Those are students between 15 and 17 years of age. We believe that adolescence explains part of this situation.

### Results of the 4<sup>th</sup> year

The 40 students of the 4<sup>th</sup> year participated in the national exam called BEPC.

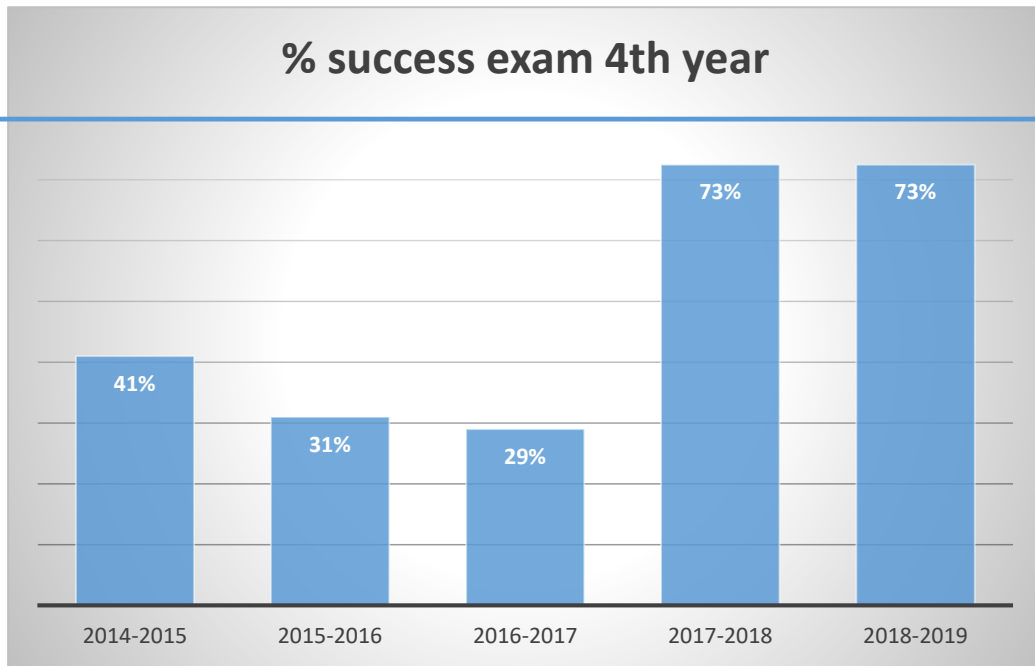
Analysis per gender	Candidates	Passed	% success
Girls	20	14	70%
Boys	20	15	80%
<b>Total</b>	<b>40</b>	<b>29</b>	<b>72,5%</b>

We are very pleased with these results which are coming closer to our objective of an 80% success rate.

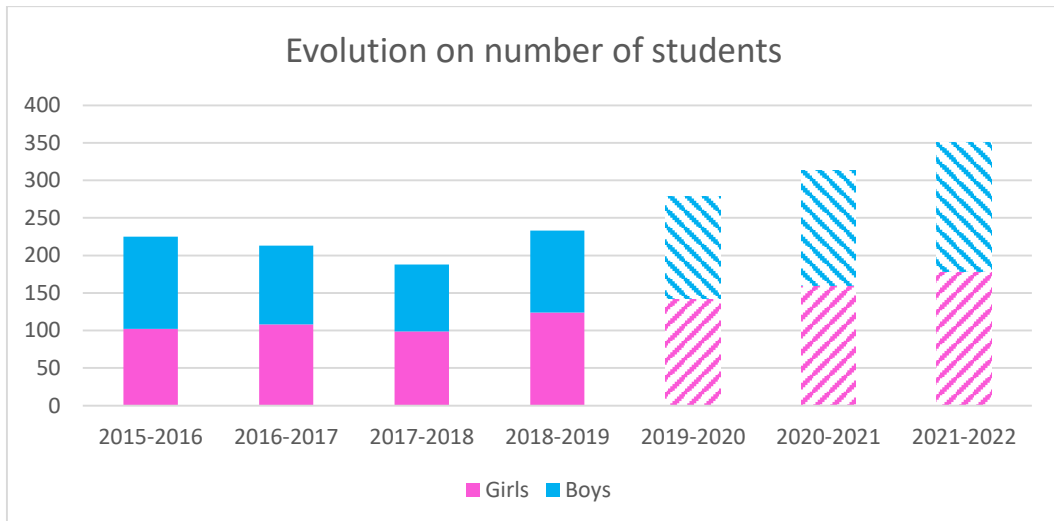
The national average for this exam was 26,62%. For the secondary schools in the area where the LAP is located it was 18%. This is a decrease of 15% of the national average in comparison with last year. At the LAP we had the same percentage of success as last year.



80% LAP  
objective



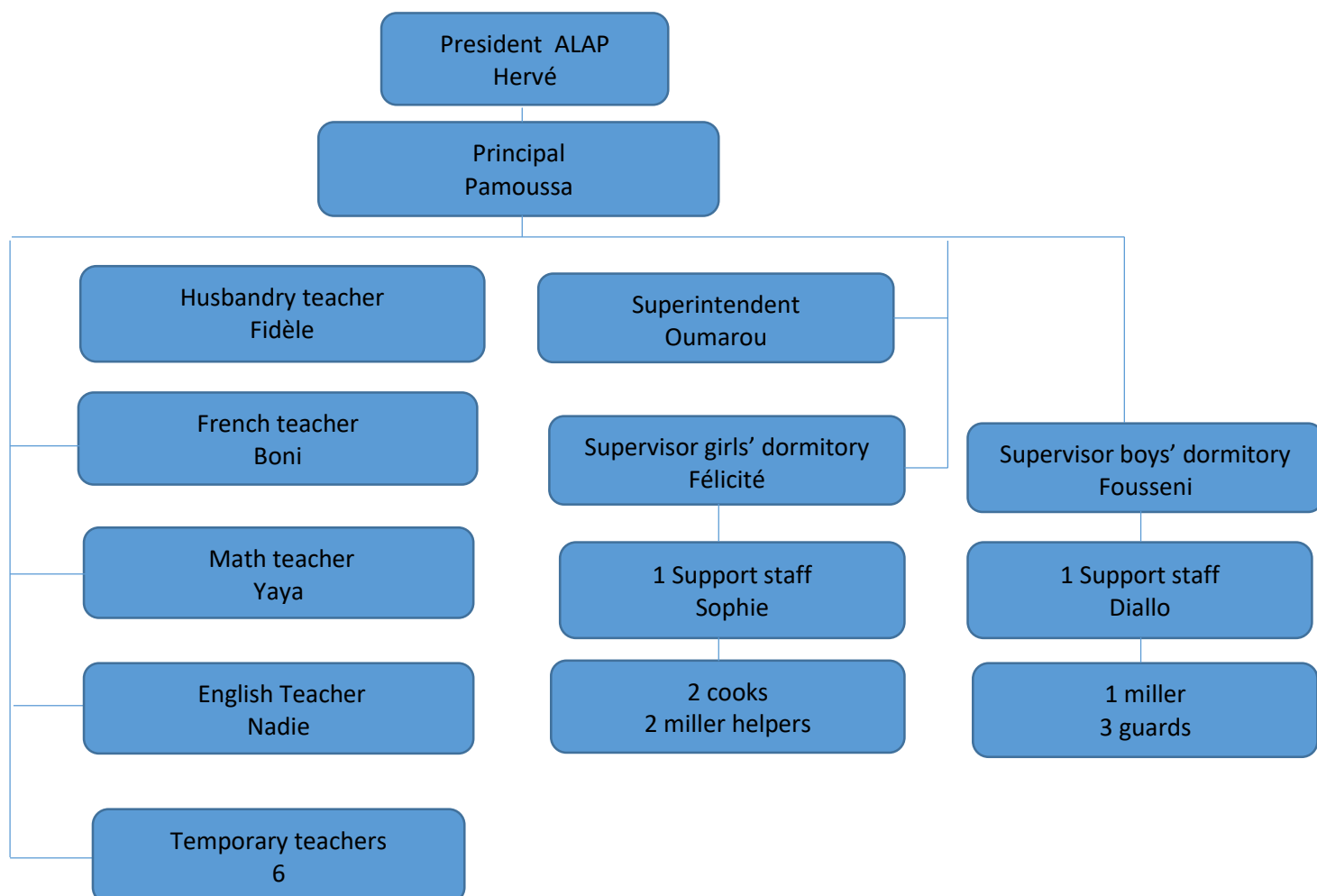
Evolution expected of the number of students in the school years to come:



Computer room

## PERSONNEL

### Personnel year 2018-2019



During the school year 2018-2019 we have added one permanent staff as handyman / guard.

**Comments on permanent staff:** we have been able to hold on to teachers and the opening of the second cycle has been without too many difficulties to find the adequate teachers.

We had a nurse for 6 months of the year and she decided not to come back for the new school year. A Petits Pas has given a scholarship for a woman of one of our villages to follow a 3 years training to become nurse. She will be ready for the school year 2020-2021. For the coming school year we are actively looking for a nurse.

The new supervisors for the boys have been performing very well and the discipline has improved a lot, still within a positive atmosphere.

## Evolution for 2019-2020

With the development of the school we will need to add an assistant to the principal Pamoussa.

The LAP is 52km from the city of Bobo Dioulasso. A lot of goods come from Bobo to the LAP (school supplies, merchandise for the cafeteria) and needed administration work is also done in Bobo.

Today, various people in Bobo are helping with that. In order to be more efficient we have asked Felicité (APPA staff) to be the coordinator of the LAP in Bobo. The director Odile and the accountant Rock of APPA will still give support for management and accounting.



*Teachers and supervisors 2018-2019*



*Students and teachers 2018-2019*

## LIVING CONDITIONS

### Students

All students are fully boarded. They receive 3 meals per day. Boys and girls each have their own quarters. The age of the students for the new year will range from 12 to 21 years old.



*Volley ball game*

The challenge is always to find the right balance between the freedom and the control, the studies and the extra-curricular activities.

Students have the possibility to go back home on the last weekend of each month. They have the normal holidays at the end of the second quarter and at the end of the school year. At the end of the school year they stay longer in order to work the fields of the LAP with the beginning of the rainy season.



*Girls knitting*

Each year students are getting older. We will have to find ways to give them a bit more freedom than the younger students.

It is important that we develop some new “entertainment” at the LAP itself in order to keep students busy with positive things. This can be tournament for checkers, football....

## Permanent staff

The houses provided to the staff living at the LAP are of very good quality. We will need to build more houses to accommodate additional permanent teachers.

One of the main complaints is about electricity which is available only from 18 to 22 PM. We would like to install solar energy on the houses. This will reduce our costs of gasoil, give more availability of electricity for the teachers and it will be good for the environment.



*Part of the teachers' compound*



*Houses for supervisors at the boys' foyer*

## PRODUCTION AT THE LAP

The production comes from the fields, the vegetable gardens, and the breeding of pigs, chickens and beekeeping.

The purpose of these activities is mainly to teach the children how to grow vegetables and how to breed animals. Most of the production is used in the preparation of the meals for the students. We have also seen that the examples shown at the LAP generate some interest in the villages: gardening, beekeeping.

The students of the 5<sup>th</sup> year have to have a internship of at least 2 months. A group of 18 students will be doing this training at the LAP. Besides this training, the students will take care of the cultures. For this activity students are being paid.

### Animals

We have a new husbandry teacher since the beginning of the year. We have already seen some major improvements in the production, starting with a better control of the costs.

- **Pigs:** we are still making a loss with this activity but it is better under control.
- **Chickens:** we have a seen improvement in this production.
- **Rabbits:** this activity could be very profitable. We still need to have a better control.
- **Oxen:** We have 2 oxen and 4 new cows. The oxen are used for ploughing in the rainy season. The cows will be used for breeding.



*The 4 new cows*



*3 piglets*

- **Hens for eggs:** in June 2019 we started the breeding of hens to have eggs. 125 chicks were bought and installed in a new coop.



*The 125 one week old chicks*



*The new coop for the chicks*

### Beekeeping

We added 3 hives for a total of 25 hives this school year. The new hives were needed in order to capture the swarms which had found a “home” in some of our buildings. This activity is profitable. We have harvested 110 kg of honey this year.



*Preparing for the honey harvest in April 2019*

## Agriculture and gardening

- **Agriculture:** in 2018 we exploited 8 hectares. Harvests were good and we plan to increase the cultivated surface to 12 hectares . Most of the production is used in the cafeteria of the students.



*Students seeding corn in June 2019*

- **Gardens:** there are 4 gardens. Each class has an assigned garden. We had very good harvests of vegetables this year. A new system for watering the vegetables was put in place in order to gain time and decrease the water usage.



*One of the gardens*



## Fruit trees



2 hectares are dedicated to cashew nut trees. Some of the trees will need to be replaced which will be done during this rainy season.

We got funding to create an orchard with a drip irrigation system. This is a fenced-in area to protect the trees against the wandering animals. We will be growing different types of trees such as citrus-, papaya-, avocado trees and pineapples.

*Pineapples and the drip watering system*

Results 2018-2019	Revenue	Costs	Results
Agriculture	911	2.672	- 1.761
Gardening	203	189	13
Animals	660	1.039	- 379
Beekeeping	153	137	16
<b>Total</b>	<b>1.927</b>	<b>4.038</b>	<b>- 2.111</b>

As you can see from this table there is still a lot to do be done to obtain positive results for the agricultural and the animal activities.

## Animal feed production

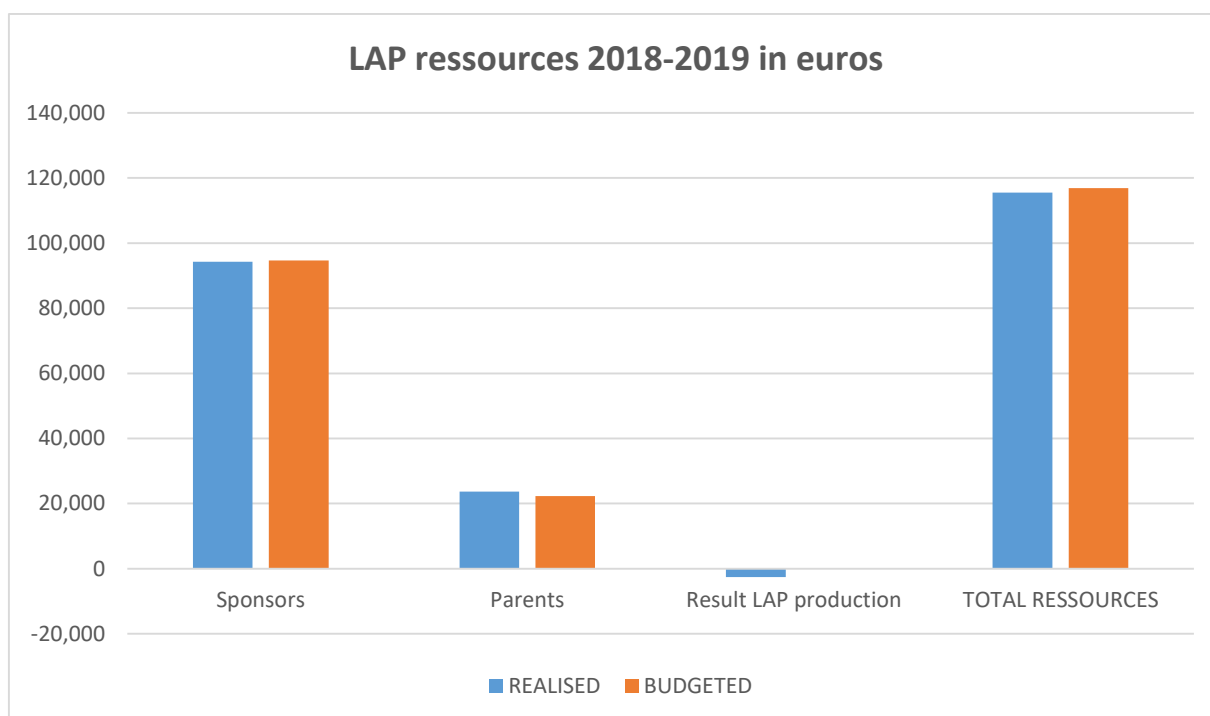
This is a new project which the students would run as a real business: a group of students for purchase, a group for production, a group for sales and a group for the financial side.

We are looking for the funding of this project.



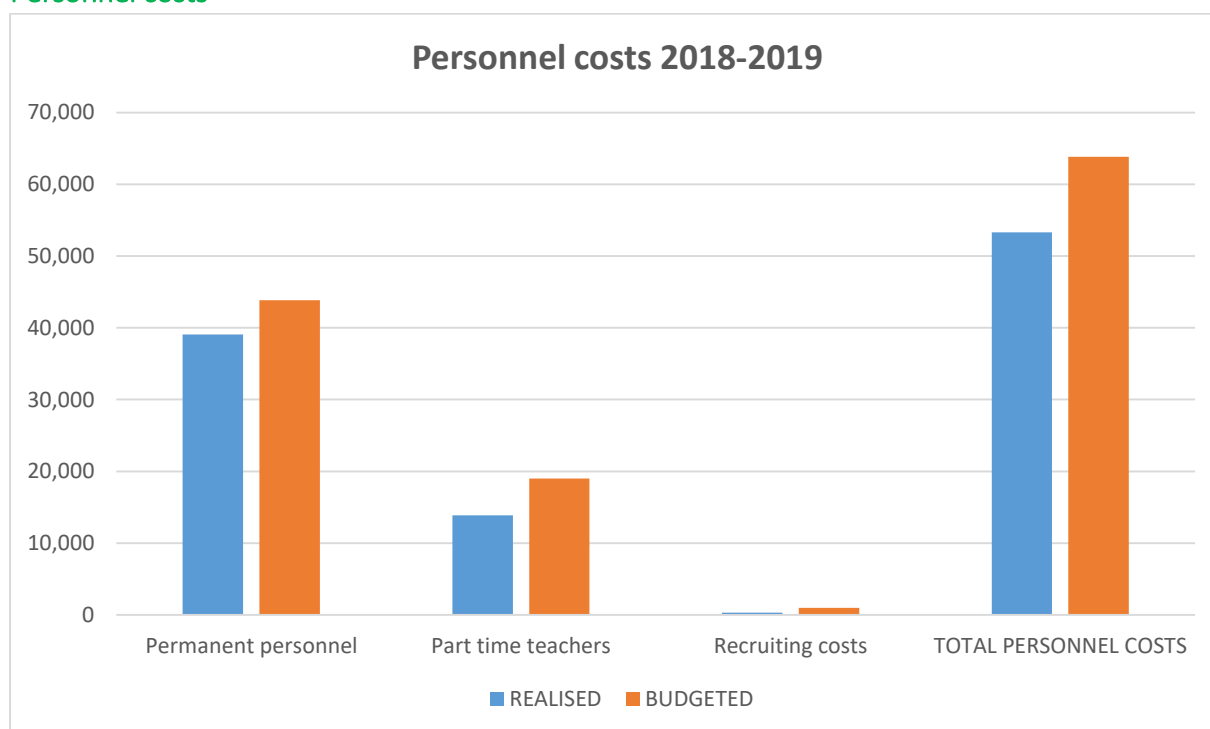
*Second year students*

## Resources



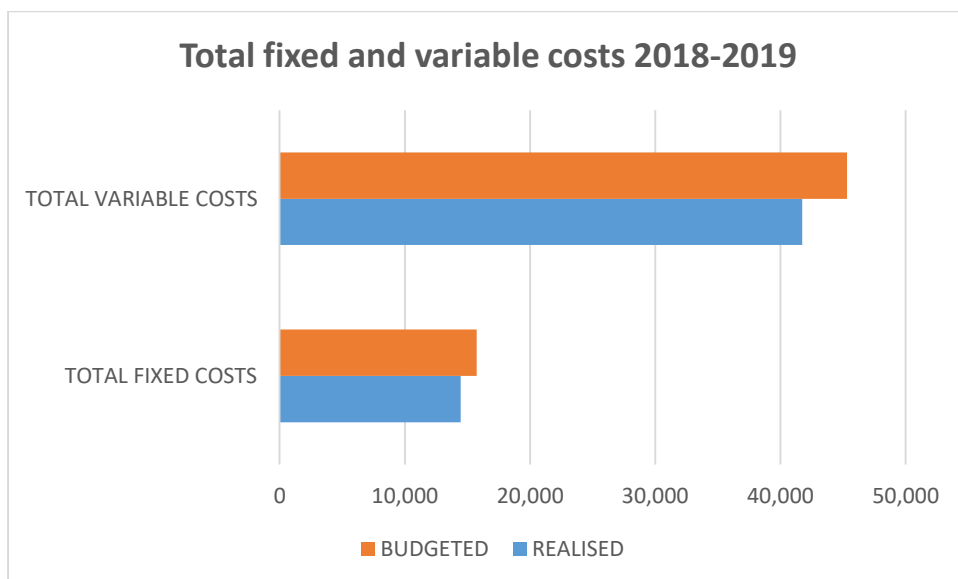
We are still losing more than 2.000 euro in the production activities of the LAP.

## Personnel costs



We manage to stay well below budget for personnel costs mainly due to less costs for part time teachers.

## Fixed and variable costs

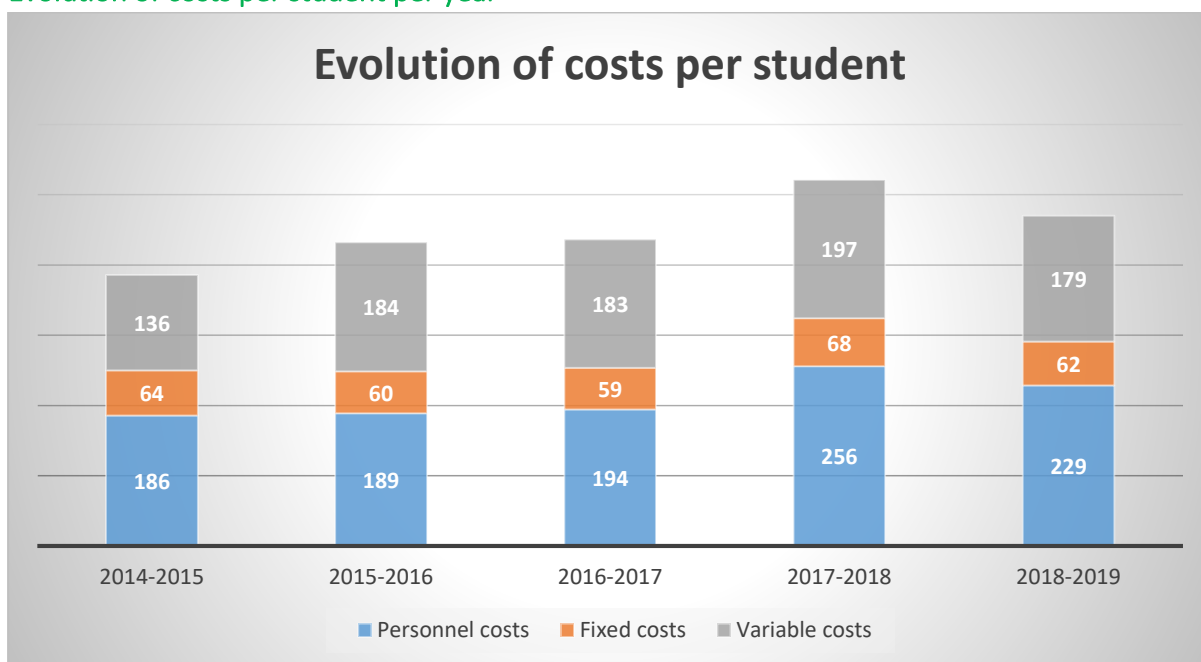


We had higher costs than expected for travel and shipment. We will have to improve our logistics to avoid emergency shipments. Also, our budget for hygiene (soap) was too low.

## Results

The total results for the LAP showed a profit of 5.987 euro.

## Evolution of costs per student per year



Total cost per student for 2018-2019 was 470 euro in comparison with 521 euro last year. This can be explained by the increase from 188 to 233 students.

## Budget 2019-2020

RESSOURCES	BUDGET 2019-2020	REALIZED 2018-2019
Sponsors	108.360	94.319
Parents fees	33.405	23.710
Result fields	0	-1.758
Result gardens	200	13
Result animals	0	-812
Result beekeeping	200	16
<b>Total</b>	<b>142.165</b>	<b>115.488</b>
CHARGES		REALIZED 2018-2019
<b>PERSONNEL</b>		
Salaries permanent personnel	34.881	30.331
Salaries part time teachers	17.368	13.895
Social charges	8.371	7.207
Medical insurance permanent personnel	2.206	1.526
Recruiting / termination fees	1.000	663
<b>Total personnel</b>	<b>63.827</b>	<b>53.622</b>
<b>FIXED COSTS</b>		
Telephone /internet	600	533
Fuel for generator	8.500	7.297
Shipments to and from the LAP	1.250	1.235
Travel costs	1.150	1.142
Accounting costs	914	914
Training	1.000	312
Bank costs	250	238
Supplies for teachers	350	321
Small equipment	2.500	2.104
Temporary workers	250	171
Other costs	250	199
<b>Total Fixed costs</b>	<b>17.014</b>	<b>14.466</b>
<b>VARIABLE COSTS</b>		
School supplies	3.965	3.323
Maintenance building	1.000	770
Maintenance grounds	150	44
General maintenance	250	130
Maintenance generator	1.000	1.004
Maintenance computer	1.000	447
Maintenance water system	1.500	1.016
Maintenance motorbike	250	175
Maintenance lighting	750	468
Consulting fees	500	488
Insurance students	214	179
Insurance motorbikes	160	0
School meals	31.792	25.377
Registration fees / training fees students	658	552
Uniforms	3.013	2.526
Costs parents association	400	336
Hygiene	3.244	2.719
Medical costs	2.610	2.188
<b>Total variable costs</b>	<b>52.456</b>	<b>41.740</b>
<b>TOTAL CHARGES</b>	<b>133.298</b>	<b>109.829</b>
<b>RESULTS</b>	<b>8.867</b>	<b>5.660</b>

The main variations are in line with a change from 233 students in 2018-2019 to a planned 278 students in 2019-2020.

## Budgeted income 2019-2020 from foreign sponsors

Source of funds	2019-2020
APP	35.000
ASAP NL	20.000
VKF	40.000
Global giving	3.000
't Atrium	6.000
Other	5.000
<b>Total</b>	<b>109.000</b>

Each year the challenge is still to find new sponsors for the students. The LAP has not been able to build a reserve yet.



*Dormitory girls' foyer*



*Girls from 4<sup>th</sup> year*

## Infrastructure built or being built in 2019

RESOURCES	Amount in euros
SALDO ANNEE 2017 - 2018	8.885
RECEIVED 2018-2019	72.815
<b>TOTAL RESOURCES</b>	<b>81.700</b>
<b>EXPENSES</b>	-
Fence teacher houses	2.137
Fence medical post	671
Paid for house supervisor 2018	739
Paid for dormitory girls 2018	8.360
Irrigation gardens	842
Cost Hens coop	11.823
Purchase of 4 cows	798
Washing area boys	696
Purchase of a motorbike	687
New pump for water well	840
New gate for girls foyer	744
Dormitories 2019	15.262
Class room 6th year	5.629
Orchard	1.288
Others	753
<b>TOTAL EXPENSES 2018-2019</b>	<b>51.269</b>
<b>AVAILABLE FOR 2019-2020</b>	<b>30.431</b>



*Watering point installed in all gardens*

## Infrastructures to be built, not yet funded for 2020

Description	Costs in euro	Information
Water tower 20m3	15.500	Needed with the increase of people and activities at the LAP
Solar energy for houses	12.500	To help teachers and decrease cost of fuel
Animal feed unit production	30.500	To start a business with the students
Laboratory Physics/Chemistry	21.000	For students to be able to practice
2 Dormitories	35.000	One for the girls and one for the boys
Toilets and showers boys foyer	9.000	Needed with the increase of boys in the foyer
2 houses for permanent teachers	16.500	For agronomy- and husbandry teachers
Class room	15.000	For 7 <sup>th</sup> year
<b>Total needed</b>	<b>141.000</b>	



*5<sup>th</sup> year students studying in a group outside of the class*

## COMMUNICATION

We have created a new site for the LAP: <https://asaplap.org>

A video was made during this school year which you can find at:

<https://youtu.be/890TA3a9Dm8>



*Harvest of cucumbers*





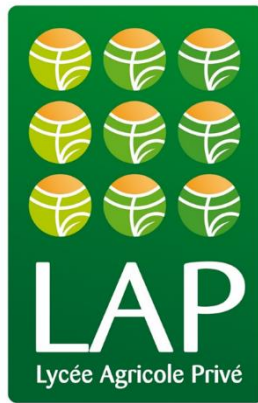
*Some of the fields of the LAP ready to be seeded*



*Football tournament between classes*



*Gardens in April 2019*



*Students 2<sup>nd</sup> year*

**Association pour le LAP (ALAP)**

BP 3492 Bobo Dioulasso

Commune rurale de Léna

Village de Oualana

Burkina Faso

Tel: + 226 20980600

Email: [herve@asap-foundation.org](mailto:herve@asap-foundation.org)

Website: <https://asaplap.org>