



## BORN ON THE EDGE | SAVING NEWBORN LIVES

“A new neonatal unit to reduce neonatal mortality by 33% and create a centre of excellence for newborn care training in eastern Uganda”

### Strengthening newborn care in eastern Uganda

Over the last five years, **Born on the Edge**, a UK registered charity, has worked in close partnership with **Mbale Regional Referral Hospital**, a government health facility in eastern Uganda. We have treated over **10,000 babies** and **saved over 3000 lives** and the number of newborn babies dying in the hospital has reduced by 70%. This dramatic success can be attributed to teamwork, a sustainable training model and good quality basic newborn care. The project is led by a neonatologist from the UK.

We are unable to further reduce the number of babies dying because of overwhelming crowding on the small neonatal unit. Admissions have doubled and there can be as many as 60 babies on a ward we designed for 10. In our Mbale Mother Centred Model it is essential to have the mothers alongside their babies, but we now use the mother's beds to accommodate babies, up to 8 at a time. All of this increases the spread of infection.

Central to the concept of improving newborn care and reducing neonatal mortality is a centre of excellence with training capacity for the region. Staff attend the current neonatal unit for exposure and hands on training but the ward is too small to meet basic standards of education. Students are turned away on a daily basis because there is no space to move.

### Project Impact

Over the next five years this project will:

**Save 600**

Save the lives of over 600 babies who otherwise would have died.

**Treat 13,000**

Treat over 13,000 babies who are born too soon, too small or who become sick

**Train >500**

Train over 500 students and practicing staff in the region







## Mbale Regional Referral Hospital

- Provides care for over 4.5 million people in eastern Uganda
- Is a referral centre for 14 districts and hundreds of lower health facilities
- There is no physical space to extend the current neonatal unit in the current location
- The neonatal unit was designed for 10 babies and mothers but now admits 250 a month, up to 60 at any one time

## Planned New Neonatal Unit

- Capacity for 52 babies and their mothers using the Mbale Mother Centred Model of newborn care, where mothers sleep alongside their babies to provide basic nursing care
- Environmental design by world leading experts HKS Architects with engineering support from Engineers for Overseas Development and ARUP - integrating rainwater harvesting and renewable energy systems
- Contextual design within the constraints of a low resource setting to improve standards of care such as infection control

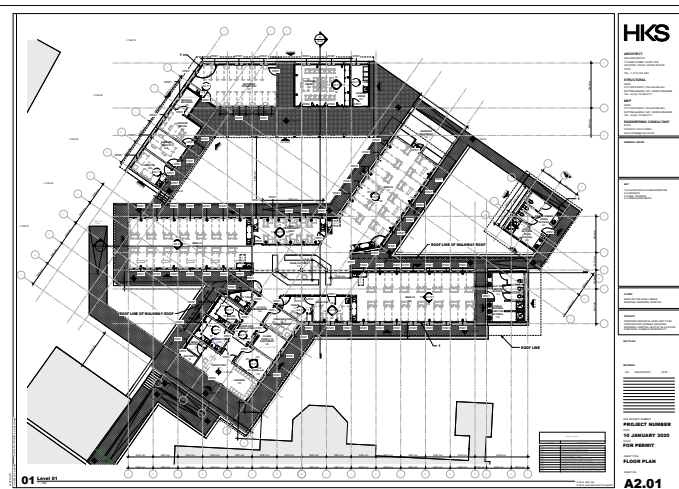


## Project Budget

Total estimated cost \$550,000 USD  
Committed funds \$191,400 USD

**To be raised: \$358,600 USD**

- 20% of construction costs committed by Mbale Regional Referral Hospital and the Ministry of Health of Uganda.
- Architectural and engineering support committed by HKS, EFOD & ARUP
- Plans finalised, blueprints and planning permission available



In partnership  
with:



Mbale Regional  
Referral Hospital

**HKS**



**ARUP**