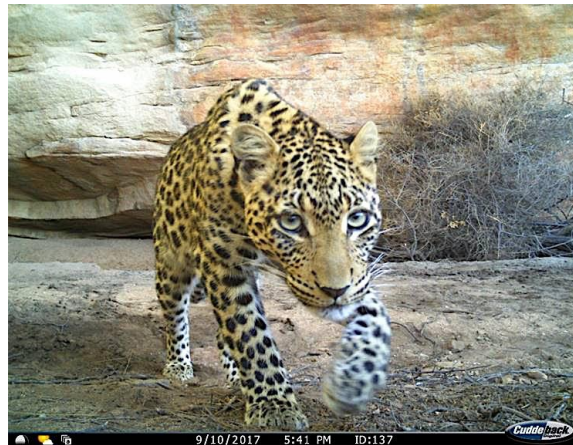


Environmental Camps

The Cape Leopard Trust uses the enigmatic leopard to inspire young people to engage with and learn about the natural world. The Trust's research on predators such as the threatened leopard of the Cape mountains offers a rich source of curriculum-aligned educational material and is the inspiration behind our wilderness camps. A variety of activities and school subjects can be included in a camp programme. Outdoor adventure and exploration through physical and intellectual challenges, such as hiking and sleeping out in the wild, give the children an experience that is stimulating on all levels and offers an exceptional learning environment.



The Cape Leopard Trust

P.O. Box 31339

Tokai 7966

Cape Town

South Africa

Phone: +27 82 811 5934

NPO 192-461

www.capeleopard.org.za



Education & Outreach Programme

The Cape Leopard Trust (CLT) is a not-for-profit research and conservation organisation in the Western Cape that also offers a unique environmental education and outreach programme in the Cederberg and Boland mountains. Its focus is to encourage young people to develop a stronger connection to the natural world through an immersive wilderness camp experience. Children between the ages of 10 and 18 are most suited to the programme, with learning material developed to align with the CAPS curriculum and designed to bring to life the complex concept of sustainable development through a variety of quality outdoor experiences.



WWW.CAPELEOPARD.ORG.ZA

Cederberg programme

The Cape Leopard Trust Cederberg Camp is located 250km from Cape Town, a four to five-hour journey by road accessible by car or minibus. Situated at the foothills of the famous Wolfberg Cracks in the heart of the Cederberg, the purpose-built campsite nestles in a tree-shaded spot alongside a picturesque river. The campsite can accommodate a maximum of 24 people.

Accommodation and Facilities

Rietgat, the Cederberg campsite, is a spectacular place to unwind after an active and exciting day. The river allows for a great dipping experience on hot days. Clean and functional dorm-style or tented accommodation and ablution facilities are on site. Large separate kitchen with gas cooking facilities, braai and fire pit. Biodegradable cleaning products provided.

Boland programme

Camps are hosted at a variety of sites depending on group size. We can offer transport to and from the campsite on request using our 20-seater Mercedes Sprinter, 'leopard bus'.



Camp prices include the following:

Qualified educator/nature guide, self-catering accommodation in dorms or tents, cooking equipment, all lesson plans and presentations, learning experiences, guided excursions, research and art equipment.

Groups provide own:

- Food (and the preparation thereof) and bedding
- Transport (CLT bus available on request for Boland camps)
- Adult supervision at the campsite

Camp Fees:

Self-catering camps from R250 per person per night for qualifying schools. Costs vary according to group size. Sponsorship opportunities available subject to eligibility.

Excluded: Transport and conservation fees or permits (prices available on request).



Activities can include:

Hiking, tracking and exploring, setting up field camera's, finding fossils, learning about rock art, history and heritage, swimming in rivers and rock pools, Mini-SASS river studies, exploring sandstone caves, fynbos studies, night walks, searching for scorpions, stargazing, nature-inspired art, writing and photography, working with mini-microscopes, map work, writing and storytelling.

Lesson content:

- Leopard and caracal research
- Leopards of the world
- Food chains & leopard diet
- Predator-prey relations
- Why are leopards important
- Threats to leopards
- Human-wildlife conflict
- Animal communication
- Animals of the Western Cape
- Rock art and archaeology
- Animal tracking
- Astronomy
- Fynbos and karoo biomes
- Birds and insects – pollination
- Reptiles and scorpions
- Geology and fossil hunting

Bookings and enquiries

For information or to make a booking, please email:

Chris Eksteen

Education and Outreach Manager

education@capeleopard.org.za

Cell: 082 811 5934

