

PROJECTS



Live & Rest Station, HAMAGIKU

Named after the town flower Nippon Chrysanthemum, "Hamagiku" is a temporary performance stage and free resting shelter constructed with the Veneer House System designed by Hiroto Kobayashi Laboratory of Keio University. It is assembled each summer for town events, and have been on the national television. The kiosk next to the stage was donated by Daiwa Lease Co. Ltd. Additional 10 kiosks were built the next year, and together, stages the summer scenery at this Shobuta Beach.

Shobuta Beach, Shichigahama Town, Miyagi Prefecture, JAPAN

July 2016 -

Supported by : KMDW, Keio University, Seihoku Plywood Co. Ltd. Tohoku University, Shinekougei Co. Ltd. Daiwa Lease Co. Ltd.



Construction workshop at
Shichigahama town, Japan
2018



Gardening workshop
Naraha, Fukushima, Japan
2018



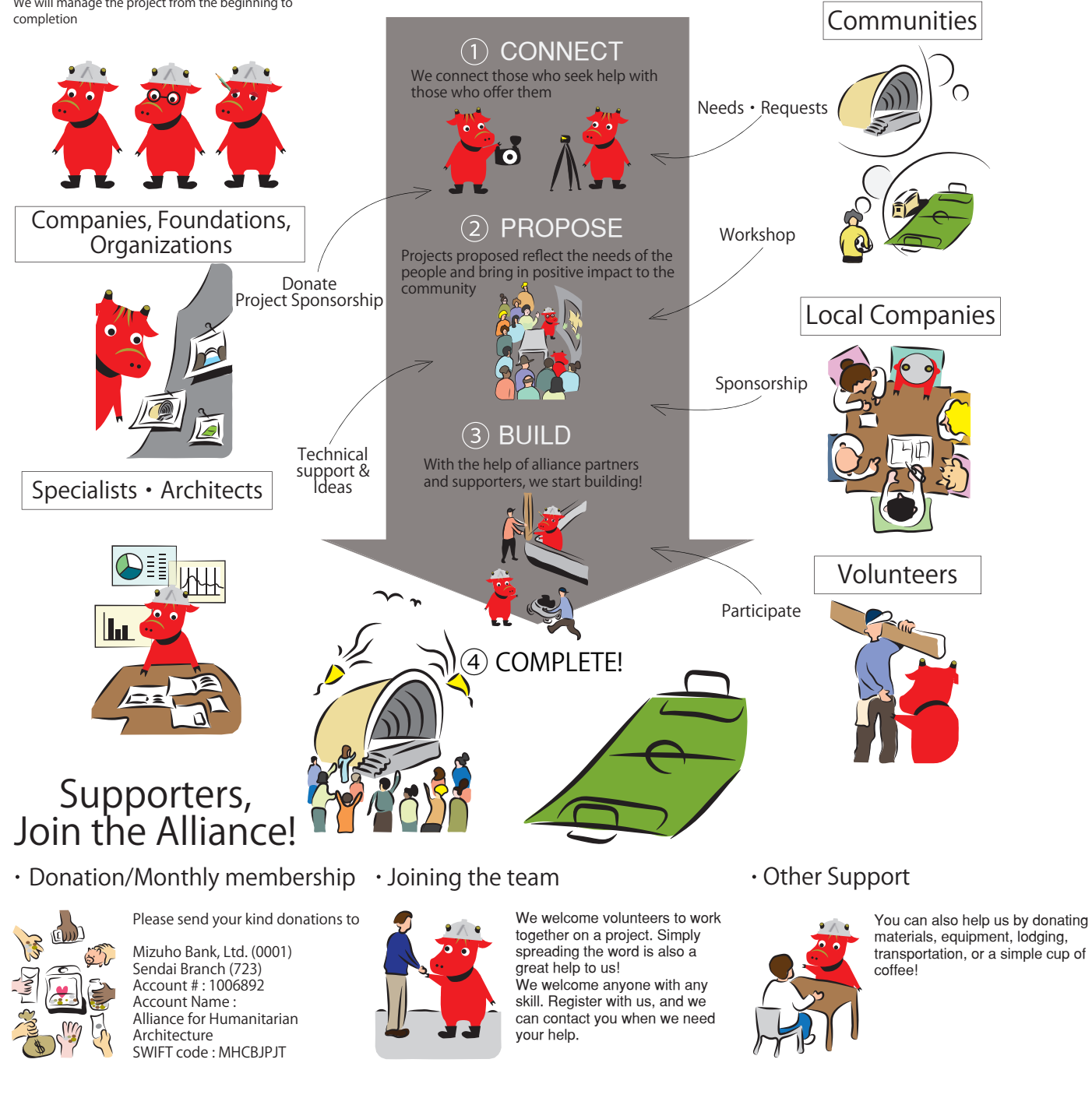
Temporary housing unit relocation
community center project
Sindhupalchok, Tatopani, Nepal
2018



Nepal project photo exhibition
at Karato Museum
Teshima, Kagawa, Japan
2018

Project Process

We will manage the project from the beginning to completion



ABOUT US

The mission of Alliance for Humanitarian Architecture (AHA) is to help to build a more sustainable future through an alliance of people from different professional backgrounds.

With our expertise in architecture, we can provide services related to architecture and spaces but are not limited to it. AHA is also devoted to education and research on disaster preparation, prevention, and also projects supporting community revitalization, aiming to provide more comprehensive aid to different types and stages of disasters.

The power of people

For our supported projects to be more than just some spatial containers, it is important for every one involved in the projects, from architects, to builders, and most importantly, its users, to have collective wills to strive making them better places.

In order to achieve this goal, it is critical to encourage users being actively participated in the building process. And the power of design is an essential factor, especially during the post-disaster rebuilding phase, in which usual construction methods are hard to be applied, and restrictions vary. Through the service and aid of AHA, all supported projects will be handled with great care so that they can be parts of communities and function in the long run.

Services

- Management of architecture and place: Creating projects by using our expertise in the field of architecture
- Emergency responses to disasters
- Planning, providing strategies and proposals for building reconstructions and community rebuilding projects after natural disasters
- Advocating resiliency
- Establishing disaster-ready teams and systems



Alliance for Humanitarian Architecture

一般社団法人ヒトレン

Alliance for Humanitarian Architecture (AHA)

35-11 Sagigamori 1 Chome, Aoba, Sendai 981-0922

Phone: +81(0)22.346.9876

<http://www.allianceforhumanitarianarchitecture.org>

email	info@ahajapan.org
facebook	Alliance for Humanitarian Architecture/
twitter	@JapanAha
instagram	aha_hitoren
youtube	Alliance for Humanitarian Architecture