



**Project Title:**

**Sinking a Bore Hole and Erection of water storage facility at Seeds of Hope Educational  
Centre in Ligala Siaya County.**

**Facilitating Body:**

**Seed Foundation:**

**Year of submission:**

**2019.**

## Executive Summary

Fostering sustainability for community programs requires renewed paradigm shifts at inception stages for effective implementation. The current ways of implementation has wrought up a dependency syndrome which make program survival beyond donor exit well nigh impossible. To effectively tackle this, The Seed Foundation a registered **Community Based Organization (CBO)** in Kenya; working with communities in the Rural areas of Kenya and the Slums of Nairobi will adopt a community livelihood framework. This will stress on community participation at all stages of the program lifecycle as well as establish a centre of empowerment for women and young girls to make informed choices. There will increase opportunities for Early Childhood Development (ECD). This framework will stress on community participation at all levels.

Sinking a borehole at the Seeds of Hope Educational Centre in Ligala in Siaya County a region that experiences very little rainfall and with seasonal rivers will play a key role in bringing a scattered community to a common platform and make this vital natural resource available and in effective and healthy supply.

This will contribute highly towards transforming the lives of women and young girls who bear the greatest brunt in searching and fetching for this precious resource. African patriarchal lifestyle which is male dominated denies young girls and women power over their own destinies. This makes this group highly vulnerable. Young girls who spend many hours in search of water skipping classes or reporting to schools late will be able to formally concentrate in their learning alongside the community benefiting from safe and hygienic drinking water.

Eco-agricultural techniques will be implemented. This will play a major role in improving food securities for the peasant and subsistence farmers whose lifeline is dependent on agriculture. This will also increase incomes for youths and who venture into farming practices and give them employment security and enable them to initiate entrepreneurship systems in diverse aspects.

The targeted region com has a lot of virgin agricultural land and if the water can be well utilized it will bring sufficient yields. Peasant women groups will be able to have an alternative income generation methodologies through effective use of irrigation in their respective farms.

## **Problem statement**

Water is the most basic need that any household needs to fulfill their wants. Its absence or scarcity creates a situation of helplessness leading to search for this valuable commodity far and wide. Majority of family set-ups in Africa are male dominated and gender roles are well defined by the family heads. In communities where men play this domination with iron fists the female population are rendered vulnerable to being assigned any tasks without their consultation or will.

Agriculture is a great and significant activity that can either be commercialized or effectively used as a tool for food production. This cannot be possible without water which is a very crucial component natural resource.

The common phrase “water is life” cannot be ignored whatsoever, as without water there is no good health and effective sanitation. Clean water and in sufficiency in our homes has to be readily available to ensure that human life goes on smoothly. In the absence of this poverty, diseases, malnutrition among other decays deeply inflicts societies to an extent of starvation, drought, famine among other sufferings.

With many rivers in Siaya County lacking a reliable permanent source and some being seasonal in an environment where rainfall is highly unpredictable; there is a great need to work for a long term solution that would play a major role in transforming the situation.

This project proposes amicable solutions geared towards reducing the adversities that lack of water imposes on women, girls and an environmental deprivation of unproductive yields for both commercial and domestic use. Through effective and programmed systematic approaches will be undertaken to innovatively apply farming skills alongside empowering the marginalized and vulnerable groups giving them entrepreneurship skills and the enlightenment to rise beyond the hardships.

## **The Seed Foundation profile**

The Seed Foundation is a **Community Based Organization** commonly known as a **(CBO)** registered under the **Ministry of Labour and Social Services** with the Kenya Government. Commonly an organization under this status is authorized to undertake and implement various social programs, pedagogical programs, humanitarian assistance but not limited to these as its diversity and objectivity plays a key point of reference. We currently run programs spanning in the fields of education, humanitarian assistance and agriculture in the rural areas of Kenya for the diversification of future food security and best agricultural practices.

### **Seeds of Hope Educational Centre**



*A section of (113) children at the Seeds of Hope Educational Centre Photo by Aouki Patrick*

We partner with the local rural communities in Siaya County to give an opportunity to the most vulnerable children. Young girls especially go through very difficult times. They face the threat of early marriages and start taking up motherly roles at very tender ages. The fact that this is a

rural region with very low perennial rains and harsh weather they face the challenge to fetch water kilometers away from their domiciles. The proposed borehole will be a great boost to the community and enable these girls concentrate in their academic works and become more informed health wise and in their future.

Due to the existing gender roles girls and cultural beliefs; girls are predominantly charged with the role of fetching water which they have to search for far and wide for this precious life commodity as most rivers are either seasonal and dries up for an average seven month in a year.

### **Seed School Kibera**

This is a special school that caters for the academic needs of the vulnerable children in the slums of Kibera. The school was began in the year 2007 and caters for the academic needs of a total of (107) one hundred and seven children. We also endeavor to give them a **feeding program** that ensures they have a daily balanced meal, breakfast and lunch. This is because their guardians cannot afford to give them the standard three meals in a day. The Feeding Program also ensures their concentration in class is maximized as they are able to concentrate better when they are satisfied. Obvious to say that their brain is able to concentrate when the stomach is full.

This program is meant to offer basic and high quality education to the very less and underprivileged Kibera slum children who would otherwise not be in any position to access this most valuable resource in one's life.

We usually do screening for approximately 40 children every year aged between three to five years and take them through the (E.C.D.) Early Childhood Development. We take the children through a systematic educational and learning program to prepare them to join upper primary schooling curriculum.

The long term plan and approach is only to hope that someday we may be able to come up with a fully-fledged primary school and community Centre to meet the needs of children in such situations and circumstances.



**Seed School Kibera Children on a mentorship program *Picture by Aouki Patrick***

### **Partnership and donors**

**Brook House School International** has been supporting the school's various activities and programs since 2008. Through this we have been able to maintain consistency in our feeding program, renovated and restructured the school structures and bought and maintained furniture among other things. We have also partnered with Brook House School Community children and parents to organize annual fundraising events and walks which all raise monies and resources to support the Seed School. The latest successful venture saw an installation an establishment of a water collection system. This ensures that rain water will now be collected and utilized for sanitation and cleaning purposes. Gutters, tank and pumping system have been installed.

The school is also partnering with Literacy World to give the children better opportunities through their weekly hourly class sessions. This helps in making them be more proactive in English language, artistic and creative skills.



## Seed Enterprises Program

We also initiated the **Seed Enterprises Program** which is the current main avenue through which artifacts and beautifully crafted ornaments like *bangles, necklaces, earrings* among others which have been carefully crafted by the parents and youths, from the locality can be marketed for the sole purpose of earning some income. This is what directly goes a long way in supporting the daily activities at the **Seed school**. This is in collaboration with guardians and the youthful community in Kibera slums.

It is a creative and ventfull way of providing informal employment for them in addition to capacity building their skills.



*Artifacts produced from recycled materials as an income generating activity to local youths, parents and guardians of the Seed School in Kibera (pictures by Aouki Patrick).*

## Eco-Agricultural project.



*Green house at the Seeds Foundation garden (photo by Aouki Patrick)*

We solidly partner with the local communities in striving to bring a balance for future food security. This we do through using locally available foodstuffs and introduction of hybridized crops to save space and utilize drip irrigation to use minimal water.

## Seed Films

The **Seed Films** strives to empower the local youths and equip them, with the most relevant skills to be able to express themselves through *storytelling, photo voice and eventually video and Film Making skills.*

## Background of operational areas

The programs under the Seed Foundation are geared towards transforming urban and rural poverty scenarios.



In rural Kenya young girls face the greatest challenge of early marriages, child labour to support their families and home makers especially those who end up losing their parents from HIV and AIDS. This is predominant in Luo Nyanza region where widow inheritance is very common. Many husbands leave behind their wives after succumbing to AIDS who are later inherited and the toll rises. This is a common practice in Siaya county, the epicenter of where our programs operate. Predominant patriarchal lifestyles in many African cultures in which Kenya is no different renders women and girls to have very limited controls for their destinies.

Kibera being one of the informal settlements in Kenya bears the greatest burden of need. With many migrants into the city facing the greatest challenges of unemployment; they find themselves in state of helplessness and great need. This leaves them with no option but to venture into living in the most informal settlements that they can find thus the proliferation and continuous growth of slums such as Kibera among other slums.

Residents in these settlements live in absolute poverty and due to the diversities in the political and economical scenarios; it is very difficult to break out from this cycle.

Education becomes a tertiary concern in their lives. This is why our program gears towards education and meeting the dietary needs of the children here. They lack balance meals as many families cannot afford this and survive on single meals leading to nutritional deficiency diseases.

### **Mission**

We nurture an atmosphere that encourages innovation, embraces diversity, and respects human life and dignity.

### **Vision**

We envision a healthy, productive and prosperous society amongst the youthful genre and with community members.

## **Goal**

The seed foundation gears towards reducing the spikes of poverty in rural and informal settlements of Kenya. Many victims hardest hit in these scenarios are women and young girls.

## **Objectives**

1. To give the young girls an opportunity to achieve basic literacy levels and play a role in setting goals for their own destinies;
2. To create, develop and partner with learning institutions and give young girls and youths opportunities in tertiary and secondary learning institutions;
3. To transform the lives of communities across Kenya through the collaboration with various partners;
4. Partner with stakeholder in the drive to establish secondary and tertiary learning centres in the rural areas of Siaya county to cater for the youths out of school;
5. To bring safe consumption waters closer to the marginalized communities;
6. To introduce simplified income generation opportunities to the local communities through eco-agricultural practices and water vending;
7. To bring a source of empowerment closer to the widows, abandoned and single parenting women in Ligala community and offer them hopes for their future.

**Project Title: Sinking a bore hole and erection of water storage facility for Ligala community.**

**Problem Addressed: Sustainable Environment for Children and women in Ligala community in Siaya County.**

**Requested Budget: 10,000,000/- Ten million Kenya Shillings Only (US\$ 105,264) one hundred and five thousand two hundred and sixty four US\$ only; (£ 100,000) British Pounds only). One hundred thousand British Pounds only.**

**Target Population:** Ligala community  
more than four thousand residents  
(4000)

According to UNICEF (2008), over 1.1 billion people lack access to an improved water source and over three million people, mostly children, die annually from water-related diseases. Water quality refers to the basic and physical characteristics of water that determines its suitability for life or for human uses. The quality of water has tremendous effects on human health both in the short term and in the long term.

### **About the Organization**

**‘Seed Foundation’** was founded in 2007 by Patrick Aouki. The Organization's main objective is geared towards promoting the general well being of the youthful population across the rural and slum settlements of Kenya; with the expectation of socially transforming their lives to determine their own destinies. The main focus being Education, Health and Sanitation.

The organization has offices in Kibera, Nairobi, and Ligala in Siaya County in Kenya.

Since **‘Seed Foundation’** was founded, it has achieved:

1. Initiated two schools; one in the slums of Kibera (Seed School Kibera) and one in Siaya county in Siaya (Seeds of Hope Educational Centre).
2. Constructed ten community pit boreholes to the residents of Ligala location. This is towards the efforts to make open defecation which is very common in the rural areas a history. The practice of open defecation is very common in many rural Kenya, it is also equally dangerous as whenever it rains the waste is washed into the nearby rivers leading to water borne diseases.
3. Initiated the Seeds Enterprises program in collaboration with the communities where it is based;
4. Initiated Eco-Agricultural program in collaboration with Ligala rural community. This is towards bringing up economical agricultural methods to the rural farmers.

### **Core Values**

**‘Seed Foundation’** has designed a mechanism through systems of beliefs and values that have become integral to its operations.

**1. Respect for human dignity-** The community and staff are our most valuable assets. We are committed to understanding their needs, giving attention to their priorities, being accountable to them at all times and fostering a rights-based approach to social justice and equity.

**2. Partnerships and Dynamism -** At '*Seed Foundation*', we actively involve the community, staff and other partners in embracing transformational change, commitment to continual improvement, sharing of best practices and leveraging of resources.

### **Purpose of the Project**

This project is proposed because through research done by '*Seed Foundation*' the findings showed that there is need for clean water provision for the *Ligala community*, a community rich in child population. The area lacks one of the most basic resources, water. Pupils from the community spend a lot of time searching for water both *girls* and boys affected by this problem. This is not only time consuming and wasteful to their academic times but also risk to the lives of the children because they are vulnerable to rape alongside other risks. Therefore, considering all these challenges '*Seed Foundation*' will partner with various stakeholders to plan and implement this project.

### **Project Location Description**

Ligala community is located in Kenya's Siaya County region in Siaya North, along the Busia-*Ligala* road, about 68 Kilometres from Busia town.

### **Physical Characteristics**

Siaya is one of the driest counties in Kenya with temperatures ranging between 25°C during the coldest months (June and July) and 35°C during the hottest months (January to March). The county receives between 200mm and 250mm of rainfall annually. The rainfall pattern is unpredictable and at times the county receives no rain in a whole year, yet in some years they experience flooding.

### **Population**

**Siaya** County has a child rich population, where 0-14 year olds constitute 45% of the total population. However, the county is at the onset of a fertility decline as 42.9% of households have 0-3 household members and 39.4% of households have 4-6 members.

## **Economic Potency**

A big population in Siaya county is composed of subsistence farmers and rely on their arable lands whereas some practice mixes farming by keeping cattle, sheep and goats. Traditionally the Siaya economy was purely agricultural, striving to survive on the products of their lands. However, the combination of a significant growth in population and a decline in their cattle holdings has forced them to seek other supplemental forms of livelihood. Some have attempted to do businesses, while many young men have migrated for at least short periods to cities to seek wage work.

## **Social Structures**

Ligala community is ruled by elders. The power of elders is linked to the belief in their curse and authority. While the youths also play a key role for the future, the decisions are made by the elders in their ability to interpret the ever-changing environment in which they live. This community is defined by polygamy and arranged marriages which lead to more than one family in every homestead.

## **Political representation**

Siaya county is divided into six constituencies namely Ugenya, Ugunja, Gem, Bondo, Rarieda and Alego Usonga. This is the National representation where each of these constituencies is represented by an elected Member of Parliament. The Governor is Jack Ranguma and Senator is James Orengo who all come from the main opposition Party, Orange Democratic Party.

Siaya County has been an opposition zone from the early days of independence thus much of the National development agenda has rendered the region to remain in the political cold. This was much culminated at the onset of the multiparty politics in the late 1980's and early 1990's when the region stood as a block against the Government then under the former President Moi and Kenya Africa National Union (KANU).

## **Intervention**

*'The Seed Foundation'* established Seeds of Hope Educational Centre in the vicinity of the village in the aim of improving their sanitation situation and empowering the community. The project title, **'Sinking a Borehole for Ligala community'** is aimed at reducing the burden imparted on young school going girls within *Ligala* community and its vicinities. The rallying

call that will mobilize the students and community members in realizing the sinking of the borehole is the main process of how the project will be achieved.

### **Project Beneficiaries**

Teenage girls have been at the centre-point of exploitation and abuse as they are considered mature to handle enormous tasks and home making roles. This is due to the fact that gender and cultural role are skewed in the African context. The situation in place denies them the opportunity to develop and independently decide on their own futures. In many cases families faced with paltry resources opt to support their male counterparts in education denying them the scarcely available chances. This exposes them to all other sorts of hardships, early marriages and family caregivers at a very early age. In situations where families lose their loved ones it is these young girls who take the head roles to fend for their siblings. It is hard on them that some turn to sex trading and much, much early marriages.

The interventions in this school includes, first working with the community household to identify those willing to commit to improving the education and life skill tactics of these group. Secondly, Seed Foundation will be training local individuals on artisans and technical skills in water vending techniques. Third, mobilizing households to acquire the necessary materials to contribute to borehole construction; and fourth, empowering community members to make prevalent changes in their hygiene practices and management. The main process of executing the project is to make use of local materials and human resources so as to enable local participation and encourage change as well.

### **Justification**

Ligala community Primarily has no permanent water source that is hygienic and able to supply irrigation water for the community. It important to note that this is predominantly a farming region. Many peasant farmers invest a big portion of their time struggling to till land in the hope of getting any harvests but in most cases they end up losing out.

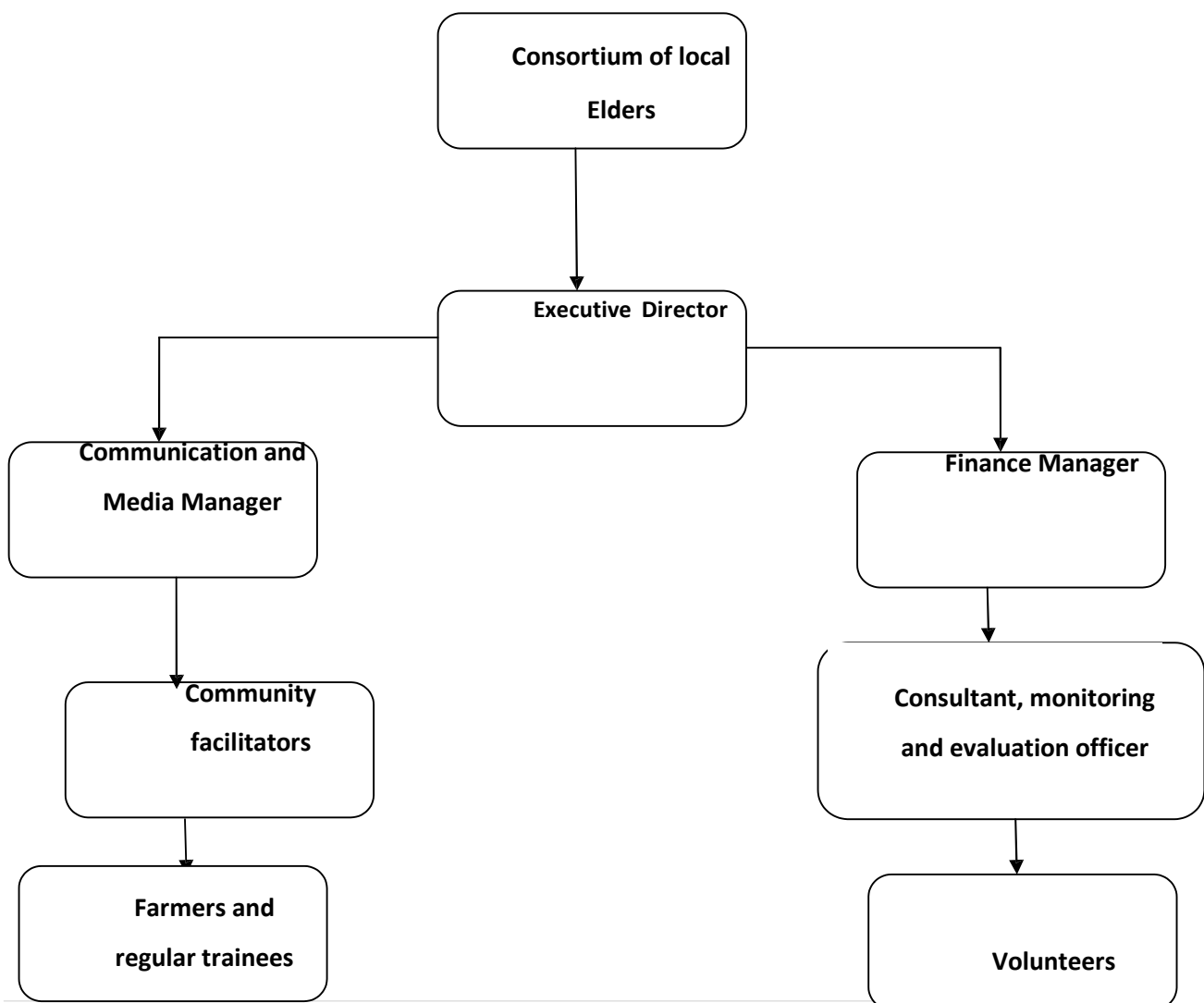
Young girls and women who bear the greatest brunt of searching for water for home and domestic use are either exposed to multiple risks and spend many hours in vain or with little success. This has been the trend in this region for many years and its very difficult to get out of this cycle as the ecosystem and the environment remains the same.



Giving the vulnerable group an opportunity for empowerment and diverse dynamics of choosing adequate options for their future will play a key role in ensuring that make informed choices and play key transformational roles in provision of food among other resources to their families.

Education plays a very significant role in the life of any human being. Opening up empowerment opportunities for young girls and women denied the same chance by the dominance cultural practices will not only enable them play a role in provision of the basic necessities to their families but open avenues of opportunities for them to make well informed choices and have control of their mental, physical healths and their off springs. This will lead to an entirety transformed community.

### **ORGANIZATIONAL STRUCTURE (ORGANOGRAM)**



### **Executive Director**

The Director is the chief of operations and is responsible for the overall direction and managing the day-to-day work of the organization. He will directly oversee the entire process of this work probono.

### **Communication and Media Manager**

The Communication and Media Manager will work closely with all the team members in helping flow of information and monitor the scope of this project to ensure full and adequate coverage. The Communication manager will also be in charge of the Public Relations and brand building of the organization. Will also tackles media related areas including online and social media.

### **Finance Director/Fundraiser**

Maintain campaign budget with accurate records and books through coordination with all relevant departments including fundraising for the campaign and on-going activities.

### **Program Manager**

The project manager will work closely with the communications and finance managers. The holder of this docket will be consultant closely with field staff and the health and sanitation counselors.

### **Consultants and Field Staff**

This will comprise the staff and experts from the borehole drilling firm that will win the tender to undertake the work to its entirety.

### **Volunteers**

These will be community member who will play major role to help the project deliver its different services within the scope plan. This will include transportation, unprofessional ground works, earth removal and scooping alongside other tasks that may rise. This will add up to the local community contribution.

### **Proposal Budget.**

Proposed Budget (phase one) Survey and Drilling

Tel: +254 20 2378358 NCPB Godowns, Lunga Lunga Road, Industrial Area

Mobile: 0716723064 P.O. Box 64360-00620, Nairobi

#### BILL OF QUANTITIES

<b>Client's Name:</b>	<b>SEED FOUNDATION</b>				
<b>Contract Loc:</b>	<b>SIAYA Distance from Nairobi Km: 400.00</b>				
<b>Quote Date:</b>	19-Aug-19				
<b>Depth meters</b>	200.00				
<b>Item</b>	<b>Description</b>	<b>Qty</b>	<b>Unit</b>	<b>Unit Price (Kshs.)</b>	<b>Total Price (Kshs.)</b>
A	<b>Hydrogeological Survey</b> To undertake a hydrogeological survey and write up a report	1	Ls	100,000.00	100,000.00
B	<b>NEMA-Approval</b>				
C	Environmental Impact			50,000.00	
D	Assessment & Report	1	Ls	35,000.00	50,000.00
	<b>Application &amp; Permit fee for Authorisation to Drill Borehole.</b>	1	Ls		35,000.00
	<b>County Government Levies</b>	1	Ls	0.00	0.00
	<b>Sub Total 1</b>				<b>185,000.00</b>
					<b>USD1,814</b>
<b>1</b> 1a	<b>Mobilization, Setting up, Demobilization</b> Mobilization to the project area of all plant, materials, equipments and personnel, including  demobilization at the end of the contract and removal	400	KM	600.00	240,000.00
	<b>Sub Total 2</b>				<b>240,000.00</b>

					<b>£ 2,400</b>
<b>2</b>	<b>Drilling</b>				
2.1a	8" dia. from ground level to 70% of Borehole Depth	140	m	5,000.00	700,000.00
2.1b	As item 2.1a but > 70% of Borehole Depth	60	m	500.00	30,000.00
	<b>Sub Total 3</b>				<b>730,000.00</b>
					<b>£ 7,300</b>
<b>3</b>	<b>Installation &amp; Development</b>				
	Supply & Installation of 6" dia. plain casings (4.5mm Class B)	140	m	1,450.00	203,000.00
3.1	Supply & Installation of 6" dia. screen casings (4.5mm class B)	60	m	1,800.00	108,000.00
	2mm - 2.5mm gravel pack				
3.2	Cost of consumables & borehole development services	5	Tons	5,000.00	25,000.00
3		Ls	Ls	150,000.00	150,000.00
	<b>Sub Total 4</b>				<b>486,000.00</b>
					<b>£ 4,860</b>
<b>4</b>	<b>Aquifer Testing</b>				
	Test pumping for 24 hrs and recovery measurements	Ls	Ls	90,000.00	90,000.00
	<b>Sub Total 5</b>				<b>90,000.00</b>
					<b>£900</b>
	FINAL COST FOR DRILLING WITHOUT VAT				<b>KES 1,731,000.00</b>
					<b>£ 17,310</b>
	GRAND TOTAL				<b>KES 2,007,960.00</b>

	WITH 16% VAT	£ 20,079.6
<b><u>Terms</u></b> 1)Permits <b>214,600.00</b> 2) Payment prior to mobilization. 70% <b>1,255,352.00 ; £ 12,554</b> 23) Balance after test pumping 30% <b>538,008.00 £ 5,380</b> Totals <b>2,007,960.00 ; £ 20,080</b>		

**PLEASE NOTE THAT SURVEY & PERMITS (SubTotal 1) and VAT ARE DIRECT COSTS**

**Installation of the Pump (Phase 2)**

Tel: +254 20 2378358 NCPB Godowns, Lunga Lunga Road,Industrial Area

Mobile: 0716723064 P.O. Box 64360-00620, Nairobi

**BILL OF QUANTITIES/QUOTATION FOR INSTALLING PUMP**

<b>Client's Name:</b> SEED FOUNDATION <b>Depth Meters:</b> 200.00					
<b>Contract Loc:</b> SIAYA Distance from Nairobi Km 400.00					
<b>Quote Date:</b> 19-Aug-19					
Item	Description	Qty	Unit	Rate	Amount
001	Grundfos Sp 9-44 7.5 kw 10HP duty 7m <sup>3</sup> /hr at head of 120m	1	no.	400,000.00	400,000.00
002	6.0mm <sup>2</sup> x 3core submersible cable	180	mts	700.00	126,000.00
003	Electrode cable	390	mts	50.00	19,500.00
004	Electrodes	2	pair	2,500.00	5,000.00
005	Cable splicing Kit	1	no.	3,500.00	3,500.00
006	uPVC dipper pipes 3/4"	30	no.	300.00	9,000.00
007	G.I class B pipes 2 "	30	no.	3,800.00	114,000.00
008	Crane sockets 2"	33	qp	800.00	26,400.00
009	Starter pipe	1	no.	1,200.00	1,200.00
010	<b>Borehole Surface Sundries within 10mts only:</b>				

011	Borehole cover plate 2" by 6" complete with fittings	1	no.	5,000.00	5,000.00
012	GI Plug 2"	1	no.	150.00	150.00
014	GI Hexagonal nipples 2"	3	no.	450.00	1,350.00
015	GI bend 2"	2	no.	600.00	1,200.00
016	Crane union 2"	1	no.	700.00	700.00
021	Boss white	4	tin	200.00	800.00
022	Non Return Valve 2"	1	no.	17,000.00	17,000.00
024	<b>Electrical</b>				
025	Junction Box complete fittings	1	no.	4,500.00	4,500.00
027	6mm <sup>2</sup> × 4core armored cable for borehole pump	50	mts	650.00	32,500.00
028	1.5 mm <sup>2</sup> × 2core armored cable for borehole pump	50	mts	350.00	17,500.00
029	electrical installation charges	1	no.	5,000.00	5,000.00
030	Non electronic control panel 7.5kw	1	no.	50,000.00	50,000.00
031	flow meter 405S DN5 2"	1	no.	20,000.00	20,000.00
032	Borehole pump installation	1	ls	40,000.00	40,000.00
033	<b>Subtotal</b>				900,300.00
034	<b>VAT (16%)</b>				144,048.00
035	<b>Total</b>				<b>1,044,348.00</b> <b>£ 10,443.48</b>



**Elevation of Storage Tank Phase 3**

**CUSTOMER :** Seed Foundation  
Siaya

**Borehole Drilling & Test-Pumping Works**  
**Pump Service & Installation Programs**

**Steel Tanks & Tower Construction**

**Civil Engineering Works**

**PROFORMA INVOICE ABI/SF/2016**

NCPB Godowns, Lunga Lunga Road, Industrial Area  
Mobile: 0700634354 P.O. Box 64360-00620, Nairobi  
Thanks for inquiry we quote as follows;

ITEM	DESCRIPTION	UNIT	QTY	RATE KSh	AMOUNT KSh
1	<b><u>Elevated Water Tank</u></b> Foundation -Prepare and construct foundation bases supporting 108m3	NO NO	1	350,000.00	350,000.00
2	(6x6x3 ) water tank Tank - Procure and fabrication of Pressed Steel Tank:	NO	1	1,050,000.00	1,050,000.00
3	108m3 (6m x 6m x3m) water tank high complete with internal bracings, brackets inclusive of necessary fixtures for erection	NO NO	1	920,000.00	920,000.00
4	Tower - 9m High Tank Structural Steelwork to support 108m3 complete with tower piers, gang way and hand rails, walkway, cat ladder inclusive of necessary	NO NO	1	82,000.00	82,000.00
5			1	70,000.00	70,000.00

7	fixtures for erection				
7	Plumbing works on tank (inlet, outlet, scour pipes and all valves and fittings)		1	100,000.00	100,000.00
	Transport to Siaya				
	Installaton, testing and commissioning				
	SUBTOTAL				<b>2,572,000.00</b> <b>£ 25,720</b>
	INCLUSIVE VAT 16%				411,520.00
	TOTAL				<b>2,983,520.00</b> <b>£ 29,835.2</b>
	<b>TOTAL AMOUNT FOR THE THREE PHASES</b>				<b>Kshs 6,035,828</b> <b>59,175 USD</b> <b>£ 60,358.28</b>

*Amount in words : Kenya Shillings six million, thirty five thousand eight hundred and twenty eight only.*

**N/B: the figures are in Kenyan Shillings and the current conversion against the pound is USD**

**1 USD = Ksh102 though this is never constant.**

Notes :

1) 70 % deposit prior to start of each phase works and balance upon completion prior to delivery. This is required by the facilitating company.

**Organization and community contribution budget**

	<b>Item/ Activity</b>	<b>quantity</b>	<b>Amount</b>	<b>Total</b>
<b>1</b>	<b>Site/ project land</b>	1	Kshs 870,000 £ 8,700	<b>Kshs 870,000</b> <b>£ 8,700</b>
	<b>Paperwork processing until all titles and permits are issued</b>	1	Kshs 120,000 £ 1200	<b>Kshs 120,000</b> <b>£ 1200</b>
<b>2</b>	<b>Construction:</b> Building blocks (2000 feet per lorry) Cement Sand Ballast Timber (assorted) <b>Iron sheets</b>  <b>Sub-total</b>	6  118 bags 8 lorries 6 lorries 1,870 feet 80 three metre pieces	Kshs 170,000  Kshs 800 Kshs 25,000 Kshs 30,000 Kshs 60 Kshs 1,500	Kshs 1,020,000  Kshs 94,400 Kshs 200,000 Kshs 180,000 Kshs 112,200 Kshs 120,000  <b>Kshs 1,726,600</b> <b>£ 14,944</b>
<b>3</b>	<b>Workshops and seminars (for a period of 1 year) three sessions</b>	3	Kshs 73,000	<b>Kshs 219,000</b>
<b>4</b>	<b>Trainings and mobilizations:</b> widows and single mothers for at least 12 per session for 1 year Inclusive venues and training materials and certification	3	Kshs 84,000	<b>Kshs 252,000</b>
<b>5</b>	<b>Manual works</b> Construction works for storage and training room to roofing and completion	1	Kshs 310, 000	Kshs 310, 000
<b>6</b>	<b>Transportation</b>	1	Kshs 160, 000	<b>Kshs 160,000</b>
<b>7</b>	<b>Total community contribution</b>			<b>Kshs 3,657,600</b> <b>£ 36,576</b>
<b>8</b>	<b>Grand total needed for the whole project</b>			<b>Kshs 9,693,428</b> <b>USD 95,033</b>

**Note: This project is set to be undertaken in stages for a period of nine months only pending availability of funds. Only when funding options are possible shall we be able to come out with a schedule of how this implementation will be undertaken. Microsoft Project will be incorporated with properly laid down Gantt chart to follow up and update the entire work process with adequacy.**