

جمعية بيت لحم العربية للتأهيل

Bethlehem Arab Society
for Rehabilitation





General Assembly

PATRIARCH FUAD TWAL

Latin Patriarchate of Jerusalem

MR. ANTON SABA

English Language Teacher

MS. SARA SALAH

School Principal in Beit-Jala

MR. ISSA TAWHEEL

Architect

DR. PETER QUMRI

Medical Director

DR. ADNAN FEIDI

Medical Doctor

Mrs. HANNAN MUSLEH

Engineer

MR. GEORGE QAWAS

Arab Bank Manager

MR. MOUSSA DARWISH

Assistant to the Executive Vice President at Bethlehem University

MRS. ANTOINETTE KNEZOVITCH

Art and Music Teacher

MR. HANI ABU DAYYEH

International Affairs and Economics, Chemical Engineer

What Is BASR

BASR stands for Bethlehem Arab Society for Rehabilitation which was founded in 1960 as one of Leonard Cheshire's homes. Now-a-days, it is a non-profit non-government organization that is nationally recognized for the comprehensive medical and rehabilitation services it renders to beneficiaries from different parts of Palestine, particularly those with disabilities regardless of their gender, age, religion or social class. BASR has worked progressively upon its commitment to enhance the overall quality of life of persons with disabilities and other vulnerable groups, inspired by its mission for their total inclusion into all aspects of community life. Since its inception, BASR has diligently developed innovative programs and services that meet the emerging needs of the Palestinian community.

DR. BISHARA ABU- GHANNAM
*Electrical Engineer and Assistant Professor
at Birzeit University*

MR. LAURENCE SAMMOUR
Senior English Language Teacher

FR. IBRAHIM SHOMALI
Parish Priest of Beit-Jala

MRS. LIDYA AL-ARAJ
Leader of Beit-Jala Women's Union

Members Of The Administrative Committee

PATRIARCH FUAD TWAL *Chairman*

MR. MOUSSA DARWISH *Vice Chairman*

MR. ISSA EL Taweel *Treasurer*

MS. SARA SALAH *Hon. Secretary*

MRS. ANTOINETTE KNEZOVITCH *Member*

DR. ADNAN FAIDI *Member*

MR. ANTON SABA *Member*



Mission

Adopting the “Holistic Approach” to rehabilitation and the philosophy of “Specialization” in service provision through a highly specialized multi-disciplinary cadre, BASR will continue to ensure its leading role as a national referral and resource medical\rehabilitation centre for the transfer of knowledge and expertise, that provides the Palestinian population with quality comprehensive services at all levels of service delivery (the national, the intermediate and the grassroots level), complimented by surgery and other support services.

Dear friends,

We, at Bethlehem Arab Society for Rehabilitation (BASR), believe that if all people are to achieve fullness in life, we need to reach out and encourage them to use and maximize their potential.

Having a person with disability is, without any doubt, an instability factor for the family and the community in general. Such presence could affect positively or negatively all aspects of an individual's life: social, economical, emotional and psychological. Our mission is to promote the human rights perspective to disability, changing negative societal attitudes towards persons with disabilities, as they are human beings with great potential, able to bring development to their society, if given the appropriate and accessible environment as well as equal opportunities for full participation in society as other citizens.

Over the course of 50 years, BASR's services have touched the lives of thousands of beneficiaries especially those with different types of disability throughout Palestine, providing them with a wide range of comprehensive specialized medical, rehabilitation, psychosocial, educational, vocational and recreational services of the highest quality possible, at an attempt to improve the quality of their life and promote their successful inclusion into society.

We would like to introduce our work to you. We hope you will feel the enthusiasm we have for the future in terms of the growth of our existing services and also the development of new innovative programs that will impact the lives of many more of our beneficiaries. The organizational development process, initiated lately at BASR, aims at promoting reflection, organizational learning and constant improvement at both the beneficiary and organizational level.

Equally, we do hope you will sense the underlying philosophy of our work here: "inclusive development based on a human rights approach to disability".

Although we find ourselves in the heart of one of the most troubled areas of the world, we hope that through our work and partnership with national and international communities, we can make one of those small gestures that make a difference.

Edmund Shehadeh
General Director



Our Vision

*Improve the
quality of life
of all people
including
those with
disabilities.*



Levels of Service Delivery

National level:

Specialized Rehabilitation, Medical & Surgical Services.

Intermediate level:

Technical support and capacity building for intermediate level services.

Grassroots level:

- Integrated Community Day Care Centers
- Ghirass Children's Cultural Center
- Community Based Rehabilitation (CBR) Program
- Outreach Rehabilitation Program
- Psychosocial Intervention Program

Program & Project Development Department

This department has been recently established consisting of the following units:

- Program and project development unit
- Knowledge management and organizational learning unit
- Public relations and fund raising unit



Rehabilitation Services

BASR's rehabilitation services are rendered by a qualified multi-disciplinary team who assesses the patients referred, plans and implements their rehabilitation program and monitors their progress, involving them and their family in the rehabilitation process and in decision making.



The rehabilitation department and its related sections receive in and out-patients with head injuries, peripheral nerve injuries, Cerebral Vascular Accidents, Cerebral Palsy, Neuropathy, fractures, Musculo-Skeletal and rheumatic disorders as well as joint replacement, in addition to those with different types of disability (physical, intellectual and sensory).





The Rehabilitation Department

This department is mainly concerned with the beneficiaries' health condition and well being, following up on the treatment of casual and chronic health problems and devising appropriate treatment plans. It is also responsible for supervising the functioning of the various rehabilitation sections to ensure quality standards, efficiency of the services rendered and their appropriateness to the patient's condition.

The Nursing Department

This department renders quality nursing care to all hospitalized patients. The major concern of our nurses is to ensure patients' physical and psychological well being, nurturing, guiding and encouraging them to reach maximum independence.

The Psychology Section

This section renders psychological evaluations and intervention as well as neuropsychological assessments to inpatients and outpatients and their families to enable them to adapt to their disabilities or crisis situation.

The Occupational Therapy Section

It involves helping beneficiaries adapt to their disability through training them in the essential skills of independent daily living as well as providing them with adapted seating modalities, splints and various technical devices. It also provides its beneficiaries with the needed environmental structural adaptations to promote their independence.



The Physiotherapy Section

It aims at habilitating and rehabilitating beneficiaries to regain as much of the physical functions as possible, using different adapted physiotherapy methods and techniques.



The Audiology Section

It provides children and adults with hearing impairment and vestibular disorders with diagnostic and rehabilitation services as well as hearing aids and maintenance services.





photo pino rivila

The Speech and Language Therapy Section

Since communication is vital for human interaction, this section renders appropriate assessment and intervention services to beneficiaries with speech/language, hearing and swallowing disorders. It also provides beneficiaries with alternative forms of communication as well as activities for the stimulation of speech and language. This section conducts video laryngoscope/fluoroscopy for the diagnosis and management of swallowing disorders in cooperation with the radiologist and the ENT specialist as needed.

The Pediatric Psychiatry Clinic

This clinic offers diagnostic, treatment and follow up services to children suffering from psychological and psychiatric disorders as well as counseling and support services to their families.

The Social Services Section

It provides vital support services to in and out-patients and their families. Regular consultations are conducted with the beneficiaries and their family members to ensure that they can reach their maximum overall functional level. Through this section, contact is maintained with community services and other organizations to meet the beneficiaries' needs.

The Vision Rehabilitation Section

The Vision Rehabilitation section provides beneficiaries with visual impairment with vision assessment and rehabilitation services, including individually tailored training in the use of Low Vision Aids and Devices, as well as outreach follow up and low vision education services to school students with visual impairment.

It also renders early intervention services to young children with visual impairment and other additional disabilities, ages 0-6 years, in addition to awareness raising and vision screening in public schools and community based organizations for prevention, early detection and intervention purposes.



photo pino ninfa



The Orthotics & Prosthetics Section

This section seeks to provide children and adults with disabilities with the necessary orthotic and prosthetic devices as well as other technical aids such as wheelchairs, walking devices, etc. in coordination with the multi-disciplinary team.





Vocational Training

Embroidery work in Bethlehem and its surroundings is an art handed down from mother to daughter. At BASR's embroidery section, women with disabilities produce beautiful hand crafted pieces of embroidery with different designs that are marketed to tourists and visitors of BASR. This not only provides them and their families with income and employment opportunities but also with dignity and hope. These women with disabilities also offer their non-disabled peers employment opportunities in their embroidery section.

One of the community centers is a vocational training centre serving young people with intellectual and developmental disabilities, ages 15 and above. This centre accommodates vocational training activities such as loom weaving, olive wood carving, paper recycling, fuel production for heating purposes, domestic care and agricultural care activities.

Resource Centre of Excellence

BASR is also nationally and internationally recognized as a resource centre of excellence for the transfer of knowledge and expertise. Through its twinning and partnership with different national and international universities and organizations, it welcomes many local and international university students and volunteers from different walks of life.

Ghirass Children's Cultural Center

This center serves a large number of school age children and young people in the Bethlehem district, including those with special needs, ranging between five to fourteen years of age. It aims at promoting child rights and enhancing children and young people's optimum development, particularly the culturally disadvantaged, by providing opportunities for self expression and personality growth through a wide range of physical, educational, cultural, social as well as recreational and leisure activities.



The Community Based Rehabilitation (CBR) Program

This program is based on a people centered approach that aims at meeting the needs of persons with disabilities to enable them to become as self-sufficient and independent as possible within their own social context, promoting their rights and facilitating their successful inclusion into society, mobilizing community resources.

The CBR program seeks to empower and support persons with disabilities, their families and organizations to become self advocates, and also to influence legislation and policies. The CBR workers train and encourage the family and the community to take a leading role in the rehabilitation process, fostering positive attitudes towards disability and emphasizing the principles of equal opportunities and social justice.





The Psychosocial Intervention Program

It is a preventive and therapeutic program that renders therapeutic intervention to traumatized, abused and neglected children as well as children with disabilities and their families, victims of the ongoing conflict, through individualized and group therapeutic interventions, in addition to other needed interventions.

The preventive component of the psychosocial program encompasses pedagogical and play activities organized at the toy libraries of the community centres for all children with and without disabilities ages 3-12.

It aims at promoting children's psychosocial well being and optimal development, helping them develop their own healing mechanisms through free play and recreational activities in a safe and enriching environment.

Awards

Rima Canawati the recipient of the International Service Human Rights Award for the Defense of the Human Rights of Persons with Disabilities.

CBR Program the recipient of Good Practice Award of the Disability Monitor Initiative in the Middle East.

The Community Day-Care Centers

The community day-care centres, founded in cooperation with local committees in the villages and refugee camps of the Bethlehem district, serve children and youth with disabilities, ages 3 to 16, providing them with special educational intervention through individualized and interactive teaching approaches to prepare them for inclusion into the regular education system and into community at large, promoting the rights of persons with disability through awareness and advocacy activities as well as various integrated educational, cultural, social, drama, arts, sports, play and recreational activities they periodically carry out.

They also render regular educational services to preschool children in their kindergartens as well as primary school children in their primary classes, where children with disabilities are included to learn alongside their peers at an early age and participate in all activities, in addition to low achieving pupils from the surrounding regular schools.

*“From Inclusion in Education
to Inclusive Education”*



A woman with dark hair tied back, wearing a white lab coat, is leaning over a desk and writing on a clipboard with a blue pen. The image is partially obscured by a large, light-colored curved shape on the right side of the page.

Medical and Surgical Services

The Rheumatology Clinic

This clinic renders diagnostic and treatment services to patients suffering from chronic rheumatic inflammatory diseases, degenerative arthritis, and musculoskeletal disorders including different types of disc problems.

The Traumatology & Orthopedic Department

This department renders diagnostic and treatment services to most orthopedic and traumatic patients. Through its well qualified orthopedic surgeons, it is capable of performing the most complicated orthopedic operations such as total joint replacement of the hip and the knee. BASR has also strengthened its pediatric orthopedic diagnostic and treatment services to encompass functional surgery for children with disabilities, the management of congenital skeletal malformation as well as spinal deviations and other pediatric bone pathologies. These services are also complemented by close post-operative care by our experienced physiotherapists to optimize patients' functional abilities.

The Cardiology clinic

This clinic offers diagnostic and therapeutic cardiovascular services to in and out-patients. These services include: E.C.G, Holter monitoring, echo cardiography, treadmill (exercise) test and tilt test.

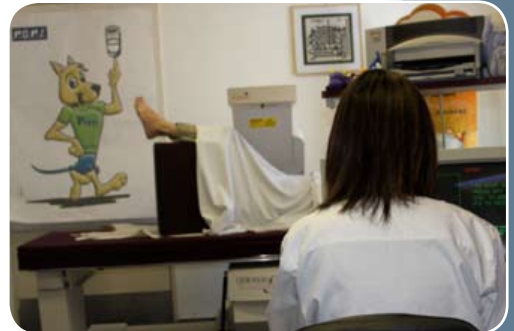
Endoscopy Unit (Gastroenterology)

This unit renders Gastroscopy and Colonoscopy procedures for disease prevention, early detection and intervention. It aims at improving patients' quality of life, saving lives in acute cases and preventing the delay in diagnosis of Gastroenterological diseases.



The Osteoporosis Prevention, Diagnostic, treatment and Research Center

It provides diagnostic, treatment and regular follow up services to patients with osteoporosis. It functions in cooperation with the Palestinian Osteoporosis Prevention Society (POPS), embarking on awareness and educational campaigns for the prevention and management of osteoporosis for different age groups as well as conducting related research studies.



Intensive Care Unit (I.C.U)

Intensive care services are rendered to patients through a qualified medical team supported by advanced equipment for acute care.





The Ophthalmology Department

This department provides quality medical and surgical services in the following fields:

- Cornea and anterior segment: Our department leads in diagnosing and treating corneal diseases, corneal transplantation and refractive surgery procedures using the LASIK and PRK techniques. Our cornea service includes also amniotic membrane and stem cells transplantation for treating severe ocular surface conditions.
- Cataract surgery is performed using the suture less Phacoemulsification procedure with foldable intraocular lens implantation. YAG Laser is used in cases of secondary opacification of posterior capsule.
- In the pediatric ophthalmology field, we are leading the treatment of childhood cataracts with implantation of intraocular lenses and the management of childhood glaucoma. The services' scope includes diagnosis and treatment of congenital ocular malformations, genetic diseases, strabismus and amblyopia, retinopathy of prematurity and all varieties of ocular diseases in children.

- The First Eye Bank in Palestine is located at BASR and is designed to provide a regular supply of locally donated corneas as well as imported ones if necessary to help children and adults suffering from corneal diseases.
- Diabetic Eye Clinic is run by well trained doctors for treating the diabetic eye diseases with Laser Photocoagulation and Avastin intraocular injections.
- Oculoplastic Clinic provides surgical correction of orbital, lid malformations and tumors.
- Uveitis Clinic is the only clinic in the West Bank for treating patients with inflammation of the ureal system of the eye.
- Our department is the training eye department for 4th year medical students of Al-Quds University Medical School since 2006. The medical students are exposed to the field of eye care through the outpatient clinics, the operating theatre, the consultation service and the emergency room. In addition, they undergo a series of theoretical lectures and teaching sessions.





E.N.T. Services

This section has the most advanced diagnostic and surgical E.N.T instruments and equipment including all E.N.T endoscopes for the nose, paranasal sinuses, nasopharynx, larynxes and upper esophagus as well as a radiofrequency apparatus for the coblation operations. The fully and well equipped outpatient clinic with its microscope and flexible endoscopes receives E.N.T patients daily providing them with quality diagnostic and treatment services.

For the first time in Palestine we are in the process of performing these surgeries and implants: Endoscopic Sinus Surgery, Middle Ear Surgery, Cochlear Implant, Advanced Meuno Physiology in Andolog Ward of Cochlear Implant, and new specialty in Speech Therapy ward for Cochlear Implant.

Other Surgical Services

- Neurosurgery and Spinal Surgery
- Urological Surgery and Endoscopic Surgery
- General Surgery including Laparoscopic Surgery

The Radiology Department

This department facilitates diagnostic and therapeutic procedures and supports the medical and rehabilitation services that BASR renders to in and out-patients.

It is equipped with a Radio-Fluoroscopy System, a plain Radiographic System and a sophisticated Ultrasound System that also includes Vascular Doppler. BASR has introduced the 64 MULTI SLICE Light Speed VCT which is one of the latest innovation in CT technology, ushering the new era in CT navigation and virtual endoscopy imaging.

The Light Speed VCT performs a complete coronary and arterial angiography within five heartbeats (five seconds) as well as dental scanning.

It also scans the standard organic examinations of the brain, chest, abdomen, spine, colon and lung airways and has the ability to deliver wide anatomical coverage and high resolution imaging simultaneously from head to toes in about 30 seconds.





Support Services

- Emergency Unit
- Laboratory
- Pharmacy
- Plaster room



*Every Patient
is First
& Formost
a Human Being*

Professional Affiliations/Memberships

- Member of CBM Regional Advisory Committee
- Member of the Disability Monitor Initiative - Middle East
- Member of West Asia Regional Committee of the International Council for Education of Persons with Visual Impairment

France

Bethlehem Arab Sciete for Réhabilitation
code établissement: 17979
code guichet: 00001
n° compte: 000 24285111
clé RIB: 72

Bank Adresse:

Europe Arab Bank Plc.
26, Avenue des Champs Élysées
B.P. 319-75365 Paris Cedex 08
Tel. 01 45 61 60 00

UK

Bethlehem Arab Society for Rehabilitation
Pound Account #: 1002-624407-300
US Account #: 1002-624407-301
IBAN #: GB 94 ARAB 4050 4462 440702
Swift Address: ARAB GB2L

Bank Address:

Europe Arab Bank Plc.
73 Brook Street
Mayfair, London W1K 4HX
UK

International

Al-Ahli Bank - Bethlehem
Beneficiary Name: Bethlehem Arab Society for Rehabilitation
Beneficiary Account number: 1870
Beneficiary address: Bethlehem, P.O.Box 100, West Bank, PA

Bank Name: Al-Ahli Bank
Bank Address: Bethlehem Branch
Bank Number: 43
Branch Number: 844

Through (intermediate Bank):

Al-Ahli Bank Main Branch - Amman Jordan
Swift Code: JONBJOAXXX

Please send us a notification of your donation to basr@basr.org

**Thanks
for
your
donation**

Bethlehem Arab Society for Rehabilitation

Specialized Rehabilitation & Surgery Hospital

P.O.Box 100, Bethlehem

Tel: ++972 2 2744049/50/51 - Fax: ++972 2 2744053

e-mail: basr@basr.org - <http://www.basr.org>

Photos by:

Bethlehem Arab Society for Rehabilitation

Munir Alawi

Designed & printed by:

NOUR Design & Print - Beit Jala

Email: info@nourdp.ps